

Product datasheet for **MR225731**

Gpr155 (NM_001190297) Mouse Tagged ORF Clone

Product data:

Product Type:	Expression Plasmids
Product Name:	Gpr155 (NM_001190297) Mouse Tagged ORF Clone
Tag:	Myc-DDK
Symbol:	Gpr155
Synonyms:	1110017O10Rik; DEPDC3; F730029F15Rik; PGR22
Mammalian Cell Selection:	Neomycin
Vector:	pCMV6-Entry (PS100001)
E. coli Selection:	Kanamycin (25 ug/mL)



[View online »](#)

ORF Nucleotide Sequence:

>MR225731 representing NM_001190297
 Red=Cloning site Blue=ORF Green=Tags(s)

TTTTGTAATACGACTCACTATAGGGCGGCCGGAATTCGTCGACTGGATCCGGTACCGAGGAGATCTGCC
 GCC**CGGATCGCC**

ATGGATTCTTATTCTCAGCAAAGAACTCAACGCTTGCTGGTGATATGAATGCGACTTGGCTGCCTCTC
 ATGGATTTAATGCCACCGCGATCCACCTTCGATGTCGATAACCCGGCTTCCCGCCTTACTGGAGTG
 CTTTGGCATAGTCCTTTGTGGCTACATAGCAGGAAGGGCCAATATCATAACCTCAACACAGGCCAAAGGA
 CTGGGGAATTCGCTCCAGATTTGCCCTTCCAGCCTTATTATTCAAAAACATGGTTGTGCTTAATTTTT
 CCAACGTGGACTGGGCTTTCTCTACAGCGTCTTAATTGGCAAAGCCTCCGTGTTTTTTCATTGTGTGTGT
 ATTAACCTTATTGGTGGCAGTCTGAGAGCCGGTTAGCAAAGCTGGACTATCCCTATTTTTGCTACA
 CAGAGTAATGACTTTGCTTTGGGATACCCTATAGTTGAAGCTCTGTACCAATCTACATATCCAGAGTATC
 TGCAGTACATTTATTTGGTGGCACCAATATCTCTTATGATGCTAAACCCATAGGGTTTATCTTCTGTGA
 AATCCAGAAGTCAAAGACACTCAAATGCTTCTCAAAATAAAGCAAAAATTGTGGGACTTGGATTCTA
 CGCGTGTACAGAACCCGATAGTATTTATGGTCTTTGTTGGCATTGCCTTCAATTTTATTCTTGATAAAA
 AGATCCCAGTATATATGGAAAACCTTCTGGATGGGCTTGCAAATTCCTTCTCTGGATCAGCCCTGTTTTA
 TCTTGGTCTGACCATGGTAGGAAAAATCAGGCGACTGAAGAAAGTCGGCGTTTGTGGTTCTTACTCTTCTC
 ATCACAGCCAACTCCTGGTGTGCCCTCCTGTGCAGAGAAATGGTGGAACTCCTGGACAAGGGGGACA
 GCGTAGTGAACCATACAAGCCTGTCCAATATGCGTTTCTATATGGTGTCTTCCCTGTGGCTCCAGGAGT
 GGCTATCTTTGCAACACAGTTCAACATGGAAGTGGAGATTATAACCTCAGGCATGGTAATAAGTACATTT
 GTGTCTGCTCCAATCATGTATGTTTCTGCCTGGTTATTAACCTTCTACCATGGATGCCAAGCCACTGG
 CGTATGCCATTGAGAATGTTAGCTTTGATATAAGTATTATCAGCCTGGTCTCCTTGATCTGCTCCCTGTC
 TATTCTTCTCTTGAGTAAGAAAATAAAGCAGCTCCACATATGCTCACAGCGAACTTACTCATCGCTCAG
 ACTATTGTTTGTGCTGGAATGATGATATGGAATTTTGTAAAGAAAAAATTTTGTGGACAAATTTTGG
 TGTTTGTTTTATTGTACAGCTCCCTGTACAGCACCTATCTGTGGACAGGCCTTCTAGCAGTTTCTTTGTT
 TCTTTTAAAGAAGCGGAGAGCCTTCCAGCTCCCGTGGGAATCATCATCTCTGGCTGGGGGATCCCT
 GCTCTCCTTGTGGGCGTCTTCTGATAACTGGAAAACACAACGGAGACAGCATTGACTCAGCCTTCTTTT
 ATGGAAAAGAGCAGATGATCACACGGCAGTACCCTGTTCTGCAGCATTCTCATAGCTGGGGTGTCACT
 CATGTGCATGAACCGCACCAAGCTGGTCACTACGAAGTTTCGGCCAGTCTCAGAACCACAAACCA
 GTAGAGCCTGGAAGCACTGCGTTTGAGGAGAACCAGCACCAACAAATGAACCAGAACTTCCCAAGTT
 CTATCCAGAAAACAAGTTGCTGTTCTTGCCTCCTTGGGAAATGGTGAATTACGCTGCCCATCCATAGAGCC
 AGTAACGAACTCAAGTGCTAGTGGGCTATGCCTTCTTCTTTGAGAAAACCGACCACTGTGTGAGCCGT
 TGTGACTCCCAGAGCTGCATCCTCGCCAGGAAGAAGAGCAGTACCTGCAGAGCGGAGACCCACAGCTGA
 CCCGGCACGTCTGTTGTGCTTGTGCTTATCATCGGCCCTTTTGTAACTCTCTCCAGCTGCCTGTGGTG
 GTTGTCAACACGAGACGGGACGGCTCTATGTTGAATTACAGTTTTTCTGTGCCGTGTTAACTTTGGC
 CAGGGATTTATTCCTTTGGAATCTTTGGGCTGGACAAACATCTAATCATCCTACCTTTCAAAGAAGGC
 TTGAATTCCTGTGGAACAACAAGAAGCAGCAGCAGACAGAGAATCCCCGTTTCCGAGGAAATAAAAT
 GACCTGTCAACAGTTTGTGATTATCACCGCGACCTGTGATCCGAAACATCGTCAGAGAAAGAGGTGT
 GGTGCCAAGACTTCTGCCGGGACCTTCTGTGGCTGTGACCTGGTGAAGTGGCTCATCGAAGTCGGCCTTG
 CTTCTGACCGCGGCAAGCTGTGATCTACGGAGACAGACTGGTGAAGGGGGGTCATCCAACACATCAC
 CAATGAATACGAGTTCCGGGACGAGTATCTTTTTACCGATTCTTCCAGAAGAGTCTGAGCAGAGTCTC
 CCTGCCCGTACTCTAAGAGACCACCAGGAGGAAAGCTATAAAGAAATCGGTCACTCATCTCCACCCTCAG
 TCTCCCTAAGACT

AG**CGGACCG**ACGCGTACGCGGCCGCTCGAGCAGAACTCATCTCAGAAGAGGATCTGGCAGCAAATGATATCC
 TGGATTACAAGGATGACGACGATAAGGTTTAA

Protein Sequence: >MR225731 representing NM_001190297
 Red=Cloning site Green=Tags(s)

MDSYFSAKNSTLAGDMNATWPASHGFNATGDPPSMSITRLFPALLECFGIVLCGYIAGRANIITSTQAKG
 LGNFVSRFALPALLFKNMVVLFNSVDWAFLYSVLIGKASVFFIVCVLTLLVASPESRFKAGLFPFIFAT
 QSNDFALGYPIVEALYQSTYPEYLQYIYLVAPISLMLNPIGFIFCEIQKSKDTQNASQNKAKIVGLGFL
 RVLQNPVIVFMVFGVIAFNFILDKKIPVYMFNLDGLANSFSGSALFYLGLTMVGKIRRLKKSFAFVLTLL
 ITAKLLVPLLCREMVLLDKGDSVNNHTSLSNYAFLYGVFPVAPGVAIFATQFNMEVEIITSGMVIISTF
 VSAPIMYVSAWLLTFPTMDAKPLAYAIQNVSFDISIISLVSLIWSLSILLSSKKYKQLPHMLTANLLIAQ
 TIIVCAGMMIWNFVKEKNFVGQILVFLVYSSLYSTYLWTGLLAVSLFLLKKRESVQLPVGIIISGWGIP
 ALLVGVLLITGKHNGDSIDSAFFYGKEQMITTAVTLFCSIL IAGVSLMCMNRTTQAGHYEGFGSQNHKP
 VEPGSTAFEENPAPTNEPELFPSSIPETSCCSCSLGNGELRCPSIEPVTNSSASGMPMPSSFECTDHCVSR
 CDSQSCILAQEEEQYLQSGDPQLTRHVLLCLLLIIGL FANLSSCLWFLNHETGRLVYELQFFCAVFNFG
 QQGISFGIFGLDKHLIILPFKRRLEFLWNNKEAAADRESPVSEEIKMTCQQFVHYHRDL CIRNIVRERRC
 GAKTSAGTF CGCDLVNWLIEVGLASDRGEAVIYGDRLVQGGVIQHITNEYFRDEYLFYRFLQKSPEQSP
 PARTLRDHQEEESYKEIGHSSPPSVSPKT

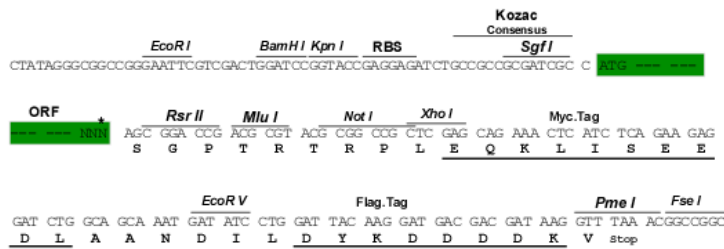
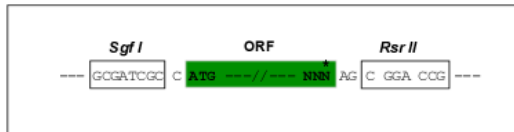
SGPTRRTRPLEQKLI SEEDLAANDILDYKDDDDKV

Chromatograms: https://cdn.origene.com/chromatograms/mm9003_e08.zip

Restriction Sites: SgfI-RsrII

Cloning Scheme:

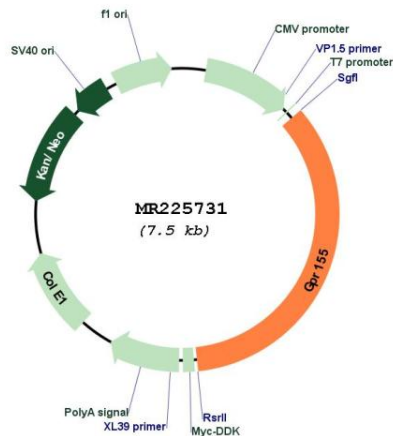
Cloning sites used for ORF Shuttling:



* The last codon before the Stop codon of the ORF

ACCN:	NM_001190297
ORF Size:	2604 bp
OTI Disclaimer:	The molecular sequence of this clone aligns with the gene accession number as a point of reference only. However, individual transcript sequences of the same gene can differ through naturally occurring variations (e.g. polymorphisms), each with its own valid existence. This clone is substantially in agreement with the reference, but a complete review of all prevailing variants is recommended prior to use. More info
OTI Annotation:	This clone was engineered to express the complete ORF with an expression tag. Expression varies depending on the nature of the gene.
Components:	The ORF clone is ion-exchange column purified and shipped in a 2D barcoded Matrix tube containing 10ug of transfection-ready, dried plasmid DNA (reconstitute with 100 ul of water).
Reconstitution Method:	<ol style="list-style-type: none"> 1. Centrifuge at 5,000xg for 5min. 2. Carefully open the tube and add 100ul of sterile water to dissolve the DNA. 3. Close the tube and incubate for 10 minutes at room temperature. 4. Briefly vortex the tube and then do a quick spin (less than 5000xg) to concentrate the liquid at the bottom. 5. Store the suspended plasmid at -20°C. The DNA is stable for at least one year from date of shipping when stored at -20°C.
RefSeq:	<u>NM_001190297.2, NP_001177226.1</u>
RefSeq Size:	4886 bp
RefSeq ORF:	2607 bp
Locus ID:	68526
Cytogenetics:	2 C3
MW:	96.8 kDa

Product images:



Circular map for MR225731