

Product datasheet for MR225725

Npy1r (NM_010934) Mouse Tagged ORF Clone

Product data:

Product Type:	Expression Plasmids
Product Name:	Npy1r (NM_010934) Mouse Tagged ORF Clone
Tag:	Myc-DDK
Symbol:	Npy1r
Synonyms:	NPY1-R; Npyr; Y1-R
Mammalian Cell Selection:	Neomycin
Vector:	pCMV6-Entry (PS100001)
E. coli Selection:	Kanamycin (25 ug/mL)
ORF Nucleotide Sequence:	>MR225725 representing NM_010934 Red=Cloning site Blue=ORF Green=Tags(s)

TTTTGTAATACGACTCACTATAGGGCGGCCGGAATTCGTCGACTGGATCCGGTACCGAGGAGATCTGCC
GCC**CGATCGCC**

ATGAACCAACTCTGTTCTCCAAGGTTGAAAATCACTCAATTCATAATGCCTCAGAGAATTCTCCAC
TTCTGGCTTTTAAAAATGATGACTGCCACCTGCCCTTGGCTGTGATTCACCTTGGCTCTCGTTATGG
GGCGGTGATTATTCTTGGCGTCTCTGGAAACCTGGCATTGATCATAATCATTCTGAAACAGAAGGAGATG
AGAAATGTACCAACATTCTGATCGTGAACCTCTCCTTCTCAGACTTGCTCGTTGCGGTCATGTGTCTCC
CGTTCACTTTTGTATATACACTGATGGACCACTGGGTCTTCGGGGAGACCATGTGCAAACTGAATCCCTT
TGTACAGTGTGTCTCCATCACAGTATCCATTTTCTCGCTGGTTCTCATCGCTGTGGAACGGCATCAGCTA
ATCATCAACCAAGAGGGTGGAGACCAACAATAGACATGCTTACATAGGCATTACTGTCAATTTGGGTCC
TTGCAGTGGCTTCTTCTCGCCCTTTGTGATCTATCAAATTCGACCGACGAGCCCTTCCAAAATGTGTC
ACTTGGCGGTTCAAGGACAAGTATGTGTGCTTTGACAAATCCCATCTGACTCTCACAGGCTGTCTTAC
ACGACTCTCCTCCTGGTGTGTCAGTATTTGGCCCACTCTGCTTATATTCATATGCTACTTCAAGATAT
ACATTCGCTTGAAAAGGAGAAACAACATGATGGACAAGATCCGGGACAGTAAGTACAGGTCCAGTGAGAC
CAAGCGAATCAACATCATGTGCTCTCCATTGTGGTGCCTTCGCGTCTGTGGCTGCCCTTACCATC
TTCAACACTGTGTTGACTGGAACCAACAGATCATTGCCACCTGCAACCAACAATCTGCTGTTTCTGCTCT
GTCACCTCACCGCATGATCTCCACCTGCGTCAACCCCATCTTTTATGGATTCTGAACAAAAATTTCCA
GAGAGACTTGCAGTTCTTCTTCAACTTTTGTGACTTCCGGTCTCGAGACGATGACTACGAGACCATAGCC
ATGTCTACCATGCATACGGATGTGTCCAAGACGCTCTGAAGCAGGCTAGCCAGTCGCATTTAAAAAAA
TCAGTATGAATGACAATGAAAAAGTC

ACGGTACGGCGCGCTCGAGCAGAACTCATCTCAGAAGAGGATCTGGCAGCAATGATATCCTGGATT
ACAAGGATGACGACGATAAGGTTTAA



[View online »](#)

Protein Sequence: >MR225725 representing NM_010934
Red=Cloning site Green=Tags(s)

MNSTLFSKVENHSIHYNASENSPLAFENDDCHLPLAVIFTLALAYGAVIILGVSGNLALIIIIILKQKEM
 RNVTNILIVNLSFSDLLVAVMCLPFTFVYTLMDHWVFGETMCKLNPVQCVSITVSIFSLVLI AVERHQL
 IINPRGWRPNRHHAYIGITVIWVLAVASSLPFVIYQILTDEPFQNVSLAAFKDKYVCFDKFPSSDHRSLSY
 TTLLLVLQYFGPLCFIFICYFKIYIRLKRNRNMDKIRDSKYRSETKRINIMLLSIVVAFVWCWLP LTI
 FNTVFDWNHQIIATCNHLLFLLCHLTAMISTCVNPIFYGFLNKNFQRDLQFFNFCDFRSRDDDYETIA
 MSTMHTDVSKTSLKQASPVAFKKISMNDNEKV

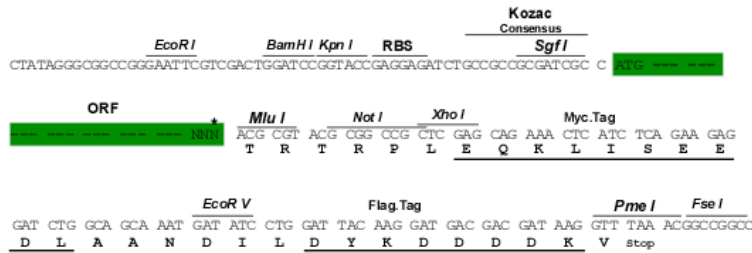
TRTRPLEQKLISEEDLAANDILDYKDDDDKV

Chromatograms: https://cdn.origene.com/chromatograms/mm9019_a10.zip

Restriction Sites: SgfI-MluI

Cloning Scheme:

Cloning sites used for ORF Shuttling:



* The last codon before the Stop codon of the ORF

ACCN: NM_010934

ORF Size: 1146 bp

OTI Disclaimer: The molecular sequence of this clone aligns with the gene accession number as a point of reference only. However, individual transcript sequences of the same gene can differ through naturally occurring variations (e.g. polymorphisms), each with its own valid existence. This clone is substantially in agreement with the reference, but a complete review of all prevailing variants is recommended prior to use. [More info](#)

OTI Annotation: This clone was engineered to express the complete ORF with an expression tag. Expression varies depending on the nature of the gene.

Components: The ORF clone is ion-exchange column purified and shipped in a 2D barcoded Matrix tube containing 10ug of transfection-ready, dried plasmid DNA (reconstitute with 100 ul of water).

Reconstitution Method:

1. Centrifuge at 5,000xg for 5min.
2. Carefully open the tube and add 100ul of sterile water to dissolve the DNA.
3. Close the tube and incubate for 10 minutes at room temperature.
4. Briefly vortex the tube and then do a quick spin (less than 5000xg) to concentrate the liquid at the bottom.
5. Store the suspended plasmid at -20°C. The DNA is stable for at least one year from date of shipping when stored at -20°C.

RefSeq: [NM_010934.4](#), [NP_035064.1](#)

RefSeq Size: 3007 bp

RefSeq ORF: 1149 bp

Locus ID: 18166

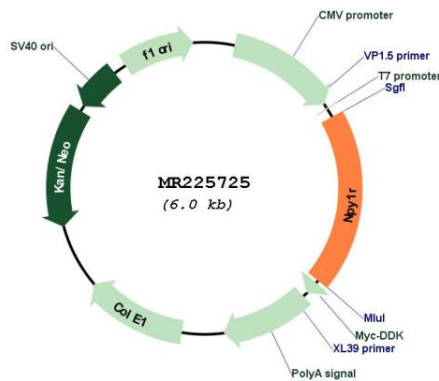
UniProt ID: [Q04573](#)

Cytogenetics: 8 33.15 cM

MW: 44.5 kDa

Gene Summary: Receptor for neuropeptide Y and peptide YY.[UniProtKB/Swiss-Prot Function]

Product images:



Circular map for MR225725