

Product datasheet for **MR225720**

MIxip (NM_177582) Mouse Tagged ORF Clone

Product data:

Product Type:	Expression Plasmids
Product Name:	MIxip (NM_177582) Mouse Tagged ORF Clone
Tag:	Myc-DDK
Symbol:	MIxip
Synonyms:	AW228700; bHLHe36; Mir
Mammalian Cell Selection:	Neomycin
Vector:	pCMV6-Entry (PS100001)
E. coli Selection:	Kanamycin (25 ug/mL)



[View online »](#)

ORF Nucleotide Sequence:

>MR225720 ORF sequence
 Red=Cloning site Blue=ORF Green=Tags(s)

TTTTGTAATACGACTCACTATAGGGCGGCCGGGAATTCGTCGACTGGATCCGGTACCGAGGAGATCTGCC
 GCC**GCGATCGCC**

ATGGCTGCCGACGTTTTTCATGTGTTTCGCCGCGCCGGCCCCGAGTCGGGGCCGTTCCGGTGTCTCAAGC
 CTCAGGTGCCCGAGGACGACGACGACTCGGACACAGACGAGCCGCTCCGCCGCCCCCTCCGGCGTGGC
 CACTTCAGCCCGGGCCACGCGAGCGCCGCGCCGCTGCCGCTCGGGCCGGCCCGGGCCGCGAGGAGCT
 CCGCGCCGACAGCAGATCATCCACAGCGGCCACTTCATGGTGTCTCTCCGCACCGCGAGCACCCGCCCA
 AGAAGGGCTATGATTTGACACGGTCAACAAGCAGACGTGCCAGACCTATAGCTTCGGCAAGACCAGCTC
 CTGCCACTTGTCCATCGATGCGTCGCTACCAAGCTCTTCGAGTGCATGACCCTGGCCTACAGTGGGAAA
 TTAGTGTCTCCAAAGTGGAAAAATTTCAAGGGCCTGAAGCTCCAGTGGCGGGACAAGATCCGGCTCAACA
 ACGCCATCTGGAGGGCATGGTATATGCAGTATTTGGAGAAGCGCAAGAATCCTGTGTCCACTTTGTAC
 CCCACTAGATGGCTCTGTTGATGTAGTGAACACCGTCGCCAGAGGCCATCACACAGAGGGCAAGTAC
 TGGAAAAGCCGATTGAGATTGTGATTCGAGAGTACCACAAGTGGAGAACCTACTTCAAGAAAAGGCTGC
 AGCAGCACAAAGGATGAGGACCTTCTAGCCTGGCCAGGACGATGACATGCTGTATTGGCATAAACATGG
 GGATGGCTGGAAAACCCAGTCCCATGGAGGAGGACTCACTGTGGACACAGACATGCTCATGTGAGAA
 TTCAGCGACACTCTTCTCCACACTCTTTCACACCAACCCGTGGCCTGGCCCAACCCACGAGAAATAG
 CACATCTGGGAAACGCAGACATGATCCAGCCAGGCTGATCCCTTTGCAACCAACCTGGACTTCATGGA
 CACCTTTGAGCCTTTCCAGGATCTTCTCCTCCAGCCGATCCATTTTGGCTCCATGTTGCCTCCTCCT
 TCATCATTACCTGCCGAGATCCTAGCAGCCACCTTCTCAGGGAAACATCTTGCCAAATACAGCTCTCC
 CTCTGCCGAGCCTGCCAATAGCCTCATTACATCTTCTGCAGCCCCCTCCCTGGATCCCACAGAGGGCCA
 GGGTTGTGAACGCACATCCCAAACGGTGGACCCGTTTATTACGCCTGCAGACTTTGGTCCCTCTGAGCCA
 CCACTGAGTGTCCACAGCCCTTCTCCTGTCTTTACGATGACCTTACTTTCCCTGGCCCGCCCGAG
 CACCTGTTCCAATGCATTGCCCTTAGTTCCTTCGCTGCCCTACTCTAAACCCCAACTCCACCAGC
 TTTCTGCAGCCACAGAAGTTTGTGGAGTCAAGCAATCCACCCCTGTTATTACCACACAGCCTCTGCA
 ACCCTTACCCATGATGCTTCTGCCACCCTTCAGCCAGAACCAGGGCCTTGTTATCACAGCACACCATC
 CAACCCCTCCTCATCCCCTGTGCTTTGGCACTGTCACCCGTACCCAGCCACCAGCCGTGGGACCTCC
 CCAACCTCATTTAACTTTTATACACCCAAACCTGTGCTTGTACTGGAGTGAGACACAAGCAGCCCCC
 AAAATAGTGCCTGCTCCTAAACCTGAGCCTGTCTCCTTGGTGTGAAGAATGCCTGCATTGCTCCAGGTG
 AGTTGGTTGGGGGTGTGGTCAGCCAGAATTGCCTAGGGAGCAATGTTTCCCTTTCTAAGGCTTTACAT
 TGGGAAGAACTCCCTCCCACT

ACGCGTACGCGGCCGCTCGAGCAGAAACTCATCTCAGAAGAGGATCTGGCAGCAATGATATCCTGGATT
 ACAAGGATGACGACGATAAGGTTTAA

Protein Sequence:

>MR225720 protein sequence
 Red=Cloning site Green=Tags(s)

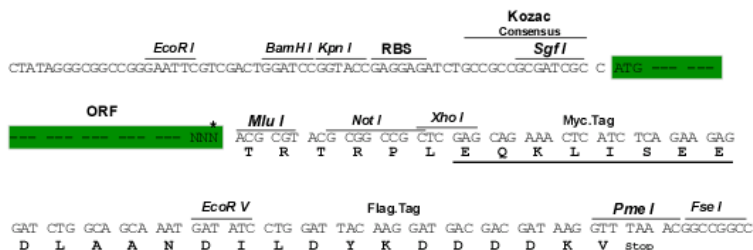
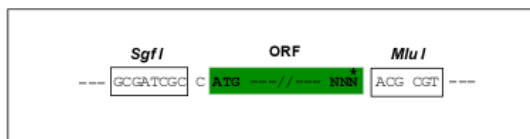
MAADVFMCSRPRRSRGRSVLLKQVPEDDDSDTDEPSPPPPSGVATSARAHASAAPLPPRAGPGREEP
 PRRQQIIHSGHFMVSSPHREHPPKGYDFDVTNKQTCQTYSFGKTSSCHLSIDASLTKLFECMTLAYSGK
 LVSPKWNFKGLKLQWRDKIRLNNAIWRAYMQYLEKRKNPVCHFVTPLDGSVDVDEHRRPEAITTEGKY
 WKSRIEIVIREYHKWRTYFKKRLQQHKDEDLSSLAQDDMLYWHKHGDGWKTPVPMEEDSLLDTDMLMSE
 FSDTLFSTLSSHQPVAWPNPREIAHLGNADMIQPLIPLQPNLDFMDTFEPPQDLFSSRSIFGSMPLPP
 SSLPAADPSSPPSQGNILPNTALPPASLPNSLITSSAAPSLDPTTEGQCERTSQTVDPIQPADFGPSEP
 PLSVPQPFPLPVFTMTLLSPGPAPAPVPTALPLVSPAPTLNPPTPPAFLQPQKFAVYSKSTPVIHTASA
 TLTHDASATTFSQNQLVITAHHTPSSSPCALALSPVPQPPAVGPPQPHLTFIHPKPVSLTGVRHKQPP
 KIVPAPKPEPVSLLVKNACIAPGELVGGVVSQNCLSNVSLSLRLYIGKNSLPT

TRTRPLEQKLISEEDLAANDILDYKDDDDKV

Restriction Sites: SgfI-MluI

Cloning Scheme:

Cloning sites used for ORF Shuttling:



* The last codon before the Stop codon of the ORF

ACCN: NM_177582

ORF Size: 1845 bp

OTI Disclaimer: The molecular sequence of this clone aligns with the gene accession number as a point of reference only. However, individual transcript sequences of the same gene can differ through naturally occurring variations (e.g. polymorphisms), each with its own valid existence. This clone is substantially in agreement with the reference, but a complete review of all prevailing variants is recommended prior to use. [More info](#)

OTI Annotation: This clone was engineered to express the complete ORF with an expression tag. Expression varies depending on the nature of the gene.

Components: The ORF clone is ion-exchange column purified and shipped in a 2D barcoded Matrix tube containing 10ug of transfection-ready, dried plasmid DNA (reconstitute with 100 ul of water).

Reconstitution Method:

1. Centrifuge at 5,000xg for 5min.
2. Carefully open the tube and add 100ul of sterile water to dissolve the DNA.
3. Close the tube and incubate for 10 minutes at room temperature.
4. Briefly vortex the tube and then do a quick spin (less than 5000xg) to concentrate the liquid at the bottom.
5. Store the suspended plasmid at -20°C. The DNA is stable for at least one year from date of shipping when stored at -20°C.

RefSeq: [NM_177582.3](#), [NP_808250.1](#)

RefSeq Size: 2649 bp

RefSeq ORF: 1845 bp

Locus ID: 208104

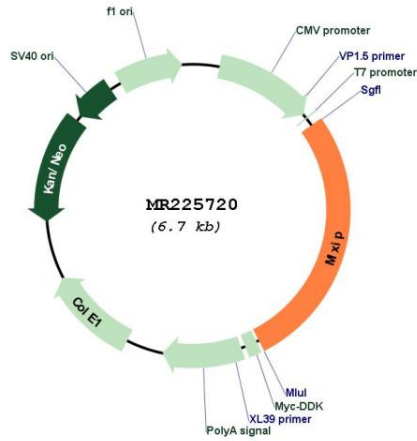
UniProt ID: [Q2VPU4](#)

Cytogenetics: 5 F

MW: 67.1 kDa

Gene Summary: Binds DNA as a heterodimer with MLX and activates transcription. Binds to the canonical E box sequence 5'-CACGTG-3'. Plays a role in transcriptional activation of glycolytic target genes. Involved in glucose-responsive gene regulation.[UniProtKB/Swiss-Prot Function]

Product images:



Circular map for MR225720