

Product datasheet for **MR225690**

Sox5 (NM_011444) Mouse Tagged ORF Clone

Product data:

Product Type:	Expression Plasmids
Product Name:	Sox5 (NM_011444) Mouse Tagged ORF Clone
Tag:	Myc-DDK
Symbol:	Sox5
Synonyms:	A730017D01Rik; AI528773
Mammalian Cell Selection:	Neomycin
Vector:	pCMV6-Entry (PS100001)
E. coli Selection:	Kanamycin (25 ug/mL)



[View online »](#)

ORF Nucleotide Sequence:

>MR225690 representing NM_011444
 Red=Cloning site Blue=ORF Green=Tags(s)

TTTTGTAATACGACTCACTATAGGGCGGCCGGGAATTCGTGACTGGATCCGGTACCGAGGAGATCTGCC
 GCC**CGGATCGCC**

ATGCTTACTGACCCTGATTTACCTCAGGAGTTTAAAAGGATGTCTTCCAAGCGACCAGCCTCTCCGTATG
 GGGAGACAGATGGAGAGGTAGCCATGGTGACAAGCAGACAGAAAAGTGAAGAGGAGGAGAGTGAGAGGCT
 CCCAGCCTTTACCTTCCCTTACATGTGAGTTTTCCCAACAAGCCTCACTCTGAGGAATTCAGCCAGTT
 TCTCTGCTGACGCAAGAGACTTGTGGTCTAGGACCCCACTGTGCAGCACAACAATGGAAGTCGATG
 GCAATAAAGTTATGTCTTATTAGCTCCATACTACCTCACCTCAGAAGGCGGAAGAAGGTGG
 GCGACAGAGTGGCGAGTCCGTGTCGAGCGCAGCCCTGGGACTCCCGAGCGGCGCAAGGGCAGCTTAGCG
 GATGTGGTGGACACCCTGAAGCAGAGGAAGATGGAAGAGCTGATCAAGAATGAGCCAGAAGACACTCCCA
 GTATTGAAAAGCTACTCTCCAAGGACTGGAAGACAAGCTCCTGGCAATGGGATCAGGGAACCTTTGGAGA
 AATAAAGGGACTCCTGAGAGCCTCGTGAGAAGGAGCGCAGCTCATGGGTATGATCAATCAGCTGACC
 AGTCTACGGGAGCAACTCCTGGCTGCCACGATGAGCAGAAGAAGTTGGCTGCATCTCAGATAGAGAAAAC
 AGCGTCAGCAGATGGAGCTGGCCAAGCAGCAACAGGAGCAGATCGCGAGGCAACAGCAGCAGCTTCTGCA
 GCAACAACACAAAATCAACTTGCTTTCAGCAACAGATCCAGGTTCAAGGTCAGCTGCCGCCATTGATGATT
 CCCGTGTTCCCTCCTGACCAGCGGACCCTCGCAGCAGCTGCCAGCAAGGATTCTCCTTCTCCTGGTT
 TCAGCTACAAGGCTGGGTGACGTGACCCCTACCCTGTTGAGTGTATCCCAACCCTATGGCAGCTGCTGC
 TGCAGCAACACAGGCTTAGGCCACTCCAGCTGCAGCAGTTCTATGCTGCCAGCTAGCCGCAATGCAG
 GTTTCTCCAGGAGGAAGCTCCTAGGCCACCCCAAGGCAACCTTGGTGTGCCGTGTCTCTACCAGCA
 TTCACACAGACAAGAGCACAACAGTCCACCACCCAAAAGCAAGGATGAAGTGGCCAGCCACTGAACCT
 ATCAGCTAAGCCCAAGACCTCTGATGGCAAATCACCTGCATCACCCACCTCTCCTCACATGCCAGCTCTG
 AGAATAAACAGTGGGGCTGGCCCCCTCAAAGCCTCTGTCCCGGCAGCATTAGCTAGTCTTCTGCAAGAG
 TTAGCACAATAGGCTATTTAAATGACCACGATGCTGTCAACAAGGCAATCCAAGAAGCTCGCCAGATGAA
 AGAGCAACTCAGGCGAGAGCAGCAAGCGTTGGACGGGAAGGTGGCCGTGGTGAACAGCATAGGTCTCAGC
 AACTGCCGACAGAAAAGGAAAAACAACACTGGAGAGCCTGACTCAGCAGTTGGCAGTTAAACAGAAATG
 AAGAAGGGAAATTTAGCCATGGAATGATGGATTTCAATATGAGTGGAGATTCTGACGGAAGCGCTGGAGT
 CTCAGAGTCAAGAATTTACAGGGAATCCAGGGGACGTGGTAGCAACGAGCCCCACATAAAGCGTCCAATG
 AATGCCTTCATGGTGTGGGCGAAAGATGAACGGAGGAAAATCCTTCAGGCCCTTCCCGACATGCACAATT
 CCAACATCAGCAAGATACTGGGATCTCGCTGGAAAGCTATGACCAACCTAGAGAAAACAGCCATACTATGA
 GGAGCAGGCCCGCCTCAGCAAACAGCACCTGGAGAAGTACCCGGACTACAAGTACAAGCCTAGGCCAAAAG
 CGCACCTGTCTGGTGGACGGCAAGAAAATGCGTATCGGGGAGTACAAGGCCATCATGCGGAACCGGAGGC
 AGGAAATGCGACAGTACTTCAACGTTGGGAACAAGCAGACAGATCCCCATCGCGACGGCCGGAGTTGTATA
 CCCAGCGCCATCGCCATGGCAGGAATGCCGTCCCCTCACCTGCCCTCCGAGCACTCGAGCGTGTCCAGC
 AGCCCGGAGCCCGGATGCCCGTATCCAGAGCACTTACGGCGCCAAGGGAGAGGAGCCCAATCAAGG
 AAGAGATCCAGGCTGAGGACATCAACGGAGAGATTTACGAGGAGTACGATGAGGAGGAGGAGCCCGGA
 TGTGGATTATGGGAGTGACAGCGAAAACCACATTGCGGGACAAGCCAAC

ACGCGTACGCGGCCGCTCGAGCAGAAACTCATCTCAGAAGAGGATCTGGCAGCAAATGATATCCTGGATT
 ACAAGGATGACGACGATAAGGTTTAA

Protein Sequence: >MR225690 representing NM_011444
Red=Cloning site Green=Tags(s)

MLTDPDLPQEFERMSSKRPASPYGETDGEVAMVTSRQKVEEEEERLPAFHLPLHVSFPNKPHEEFQPV
 SLLTQETCGPRTPTVQHNTMEVDGNKVMSSLAPYNSSTSPQKAEEGGRQSGESVSSAALGTPERRKGLA
 DVVDTLKQRKMEELIKNEPEDTPSIEKLLSKDWKDKLLAMGSGNFGEIKGTPESLAEKERQLMGMINQLT
 SLREQLLAHDEQKLAASQIEKQRQOMELAKQQEQEIARQQQLLQQQHKINLLQQQIQVQGQLPPLMI
 PVFPPDQRTLAAAAQQGFLLPPGF SYKAGCSDPYPVQLIPTTMAAAAAATPGLGPLQLQQFYAAQLAAMQ
 VSPGGKLLGLPQGNLGAASVPTSIHDKSTNSPPP KSKDEVAQPLNLSAKPKTSDGKSPASPTSPHMPAL
 RINSGAGPLKASVPAALASPSARVSTIGYLNHDHDAVTKAIQEARQMQELRREQQALDGKAVVNSIGLS
 NCRTEKEKTTLESLTQQLAVKQNEEGKF SHGMDFNMSGSDGSAGVSESR IYRESRGRSNEPHIKRPM
 NAFMVWAKDERRKILQAFPMHNSNI SKILGSRWKAMTNLEKQPYEEQARLSKQHLKPYDPYKYKPRPK
 RTCLVDGKKLRIGEYKAIMRNRQEMRQYFNVGQQAQIPIATAGVVYPSAIAMAGMPSPHLPSEHSSVSS
 SPEPGMPVIQSTYGAKGEEPHIKEEIQ AEDINGE IYEEYDEEEEDPDVDYGDSDSENHIAGQAN

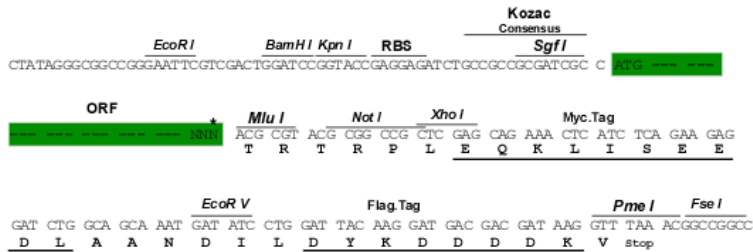
TRTRPLEQKLI SEEDLAANDILDYKDDDDKV

Chromatograms: https://cdn.origene.com/chromatograms/ja1833_f02.zip

Restriction Sites: Sgfl-MluI

Cloning Scheme:

Cloning sites used for ORF Shuttling:



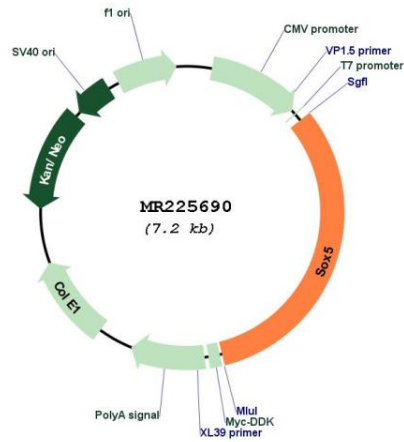
* The last codon before the Stop codon of the ORF

ACCN: NM_011444

ORF Size: 2289 bp

OTI Disclaimer:	<p>Due to the inherent nature of this plasmid, standard methods to replicate additional amounts of DNA in E. coli are highly likely to result in mutations and/or rearrangements. Therefore, OriGene does not guarantee the capability to replicate this plasmid DNA. Additional amounts of DNA can be purchased from OriGene with batch-specific, full-sequence verification at a reduced cost. Please contact our customer care team at custsupport@origene.com or by calling 301.340.3188 option 3 for pricing and delivery.</p> <p>The molecular sequence of this clone aligns with the gene accession number as a point of reference only. However, individual transcript sequences of the same gene can differ through naturally occurring variations (e.g. polymorphisms), each with its own valid existence. This clone is substantially in agreement with the reference, but a complete review of all prevailing variants is recommended prior to use. More info</p>
OTI Annotation:	This clone was engineered to express the complete ORF with an expression tag. Expression varies depending on the nature of the gene.
Components:	The ORF clone is ion-exchange column purified and shipped in a 2D barcoded Matrix tube containing 10ug of transfection-ready, dried plasmid DNA (reconstitute with 100 ul of water).
Reconstitution Method:	<ol style="list-style-type: none"> 1. Centrifuge at 5,000xg for 5min. 2. Carefully open the tube and add 100ul of sterile water to dissolve the DNA. 3. Close the tube and incubate for 10 minutes at room temperature. 4. Briefly vortex the tube and then do a quick spin (less than 5000xg) to concentrate the liquid at the bottom. 5. Store the suspended plasmid at -20°C. The DNA is stable for at least one year from date of shipping when stored at -20°C.
RefSeq:	NM_011444.3 , NP_035574.2
RefSeq Size:	2917 bp
RefSeq ORF:	2292 bp
Locus ID:	20678
Cytogenetics:	6 76.14 cM
MW:	84.5 kDa
Gene Summary:	Binds specifically to the DNA sequence 5'-AACAAAT-3'. Activates transcription of COL2A1 and AGC1 in vitro.[UniProtKB/Swiss-Prot Function]

Product images:



Circular map for MR225690