

## Product datasheet for MR225687

### Adrb3 (NM\_013462) Mouse Tagged ORF Clone

#### Product data:

**Product Type:** Expression Plasmids  
**Product Name:** Adrb3 (NM\_013462) Mouse Tagged ORF Clone  
**Tag:** Myc-DDK  
**Symbol:** Adrb3  
**Synonyms:** Adrb-3  
**Mammalian Cell Selection:** Neomycin  
**Vector:** pCMV6-Entry (PS100001)  
**E. coli Selection:** Kanamycin (25 ug/mL)  
**ORF Nucleotide Sequence:** >MR225687 representing NM\_013462  
 Red=Cloning site Blue=ORF Green=Tags(s)

TTTTGTAATACGACTCACTATAGGGCGGCCGGAATTCGTCGACTGGATCCGGTACCGAGGAGATCTGCC  
 GCCCGGATCGCC

ATGGCTCCGTGGCCTCACAGAAACGGCTCTCTGGCTTTGTGGTCGGACGCCCTACCCTGGACCCAGTG  
 CAGCCAACACCAGTGGGTTGCCAGGAGTACCATGGGCAGCGGCATTGGCTGGGGCATTGCTGGCGCTGGC  
 CACGGTGGGAGGCAACCTGCTGGTAATCATAGCCATCGCCCGACGCCGAGACTACAGACCATAACCAAC  
 GTGTTCTGACTCACTGGCCGAGCTGACTTGGTAGTGGGACTCCTCGTAATGCCACCAGGGGCCACAT  
 TGGCGCTGACTGGCCATTGGCCCTTGGGCGAAACTGGTTGCGAACTGTGGACGTCAGTGGACGTGCTCTG  
 TGTAACTGCTAGCATCGAGACCTTGTGCGCCCTGGCTGTGGACCGCTACCTAGCTGTACCAACCCCTTG  
 CGTTACGGCACGCTGGTTACCAAGCGCCGCGCCCGCGCGCAGTTGTCTTGGTGTGGATCGTGTCCGCTG  
 CCGTGTCTTTGCGCCCATCATGAGCCAGTGGTGGCGTGTAGGGGAGATGCCGAGGCACAGGAATGCCA  
 CTCCAATCCGCGCTGCTGTTCTTTGCCTCCAACATGCCCTATGCGCTGCTCTCCTCCTCCGCTCTCTTC  
 TACCTTCCCCTCCTTGTGATGCTCTTCTGCTATGCTCGAGTGTTCTGTTGGCTAAGCGCCAACGGCATT  
 TGCTGCGCCGGAACTGGGCCGTTCTCGCCGAGGAGTCTCCGCCGCTCCGTCGCGCTCTCCGTCCTC  
 TGCCACAGGCGGGACACCCGCGGCACCCGATGGAGTGCCCCCTGCGGCCGGCGGCTGCGCGCCTCCTG  
 CCACTCCGGGAACACCCGCCCCGCGCACCTTAGGTCTCATTATGGGCATCTTCTCTGTGCTGGCTGC  
 CCTTCTTCTGGCAACGTGCTGCGCGCACTCGCGGGCCCTCTAGTTCAGCGGAGTTTTCATCGC  
 CCTGAACTGGCTGGGCTATGCCAACTCCGCCTTCAACCCGGTCATCTACTGCCGAGCCCGGACTTTCGC  
 GACGCTTCCGTCGTCTTCTGTGTAGCTACGGTGGCCGTGGACCGGAGGACCCAGCGCAGTCACCTTCC  
 CAGCCAGCCCTGTTGAAGCCAGGCAGAGTCCACCCTCAACAGGTTTGTGGCTATGAAGGTGCGCGTCC  
 GTTCCCACG

ACGGTACGCGCGGCTCGAGCAGAACTCATCTCAGAAGAGGATCTGGCAGCAAATGATATCTGGATT  
 ACAAGGATGACGACGATAAGGTTTAA



[View online »](#)

**Protein Sequence:** >MR225687 representing NM\_013462  
Red=Cloning site Green=Tags(s)

MAPWPHRNGSLALWSDAPTLDPSAANTSGLPGVPWAAALAGALLALATVGGNLLVIAIARTPRLQTITN  
 VFVTSLAAADLVGLLVMPPGATLALTGHWPLGETGCELWTSVDVLCVTASITLCAVDRYLAVTNPL  
 RYGTLVTKRRARAAVLVVIVSAAVSFAPIMSQWWRVGDAAEAQECHSNPRCCSFASNMPYALLSSVSF  
 YLPLLVMLFVYARVYVAKRQRHLLRRELGRFSPEESPSPSRSPATGGTAAAPDGVPPCGRRPARLL  
 PLREHRALRTLGLIMGIFSLCWLPFFLANVLRALAGPSLVPSGVFIALNLWLGYANSANFNPVIYCRSPDFR  
 DAFRRLLCSYGGRPPEPRAVTFPASPVEARQSPPLNRFDGYEGARPFPT

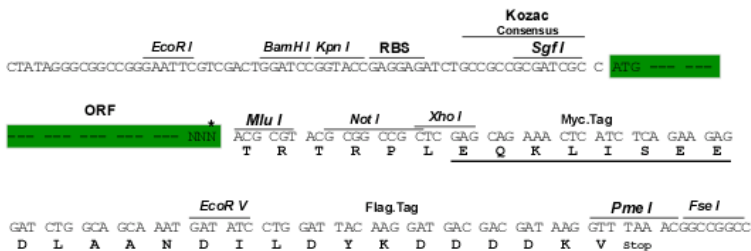
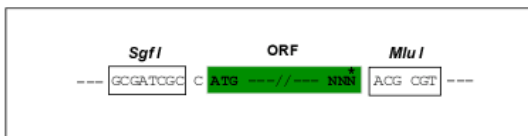
TRTRPLEQKLISEEDLAANDILDYKDDDDKV

**Chromatograms:** [https://cdn.origene.com/chromatograms/mm9018\\_e11.zip](https://cdn.origene.com/chromatograms/mm9018_e11.zip)

**Restriction Sites:** SgfI-MluI

**Cloning Scheme:**

Cloning sites used for ORF Shuttling:



\* The last codon before the Stop codon of the ORF

**ACCN:** NM\_013462

**ORF Size:** 1200 bp

**OTI Disclaimer:** The molecular sequence of this clone aligns with the gene accession number as a point of reference only. However, individual transcript sequences of the same gene can differ through naturally occurring variations (e.g. polymorphisms), each with its own valid existence. This clone is substantially in agreement with the reference, but a complete review of all prevailing variants is recommended prior to use. [More info](#)

**OTI Annotation:** This clone was engineered to express the complete ORF with an expression tag. Expression varies depending on the nature of the gene.

**Components:** The ORF clone is ion-exchange column purified and shipped in a 2D barcoded Matrix tube containing 10ug of transfection-ready, dried plasmid DNA (reconstitute with 100 ul of water).

**Reconstitution Method:**

1. Centrifuge at 5,000xg for 5min.
2. Carefully open the tube and add 100ul of sterile water to dissolve the DNA.
3. Close the tube and incubate for 10 minutes at room temperature.
4. Briefly vortex the tube and then do a quick spin (less than 5000xg) to concentrate the liquid at the bottom.
5. Store the suspended plasmid at -20°C. The DNA is stable for at least one year from date of shipping when stored at -20°C.

**Note:** Plasmids are not sterile. For experiments where strict sterility is required, filtration with 0.22um filter is required.

**RefSeq:** [NM\\_013462.3](#), [NP\\_038490.2](#)

**RefSeq Size:** 2795 bp

**RefSeq ORF:** 1203 bp

**Locus ID:** 11556

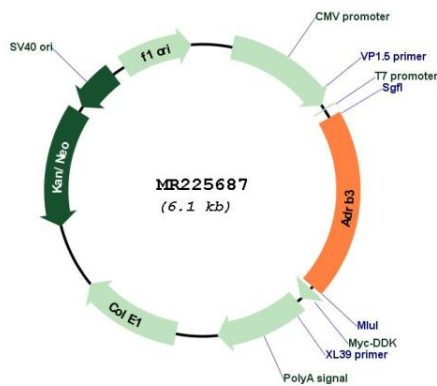
**UniProt ID:** [P25962](#)

**Cytogenetics:** 8 15.94 cM

**MW:** 43.5 kDa

**Gene Summary:** Beta-adrenergic receptors mediate the catecholamine-induced activation of adenylate cyclase through the action of G proteins. Beta-3 is involved in the regulation of lipolysis and thermogenesis.[UniProtKB/Swiss-Prot Function]

**Product images:**



Circular map for MR225687