

Product datasheet for MR225638

Chodl (NM_139134) Mouse Tagged ORF Clone

Product data:

Product Type:	Expression Plasmids
Product Name:	Chodl (NM_139134) Mouse Tagged ORF Clone
Tag:	Myc-DDK
Symbol:	Chodl
Synonyms:	3110074E07Rik; MT75; PRED12
Mammalian Cell Selection:	Neomycin
Vector:	pCMV6-Entry (PS100001)
E. coli Selection:	Kanamycin (25 ug/mL)
ORF Nucleotide Sequence:	>MR225638 ORF sequence Red=Cloning site Blue=ORF Green=Tags(s)

TTTTGTAATACGACTCACTATAGGGCGGCCGGAATTCGTCGACTGGATCCGGTACCGAGGAGATCTGCC
GCC**CGATCGCC**

ATGATCCGCATCGCCTCACTCTTGCTGGGAGCTGCGTGTCTGTGCCAGGGAGCCTTTGCCGAAGGG
TGGTCAGTGGTCAAAGGTGTGTTTTGCTGATGTGAAACATCCCTGTACAAAATGGCGTACTTCCATGA
ACTGTCTAGCCGGGTGAGCTTCCAGGAAGCAAGGCTGGCTTGAAAAGTGAAGGGGTGTCCTCCTGAGT
CTTGAGAATGAAGCTGAACAGAAGTTAATAGAGAGCATGCTTCAGAACCTGACAAAACCTGGAACAGGTA
TTTCAGATGGTGACTTCTGGATAGGACTTTTGAGAAGCGGAGATGGCCAAACATCGGGTGCCTGCCAGA
TCTCTACCAGTGGTCTGATGGAAGCAGCTCCAGTTCGAAACTGGTACACTGATGAACCTTCTGTGGG
AGTGAAAATGTGTAGTCATGTACCACCAACCACTGCCAATCCTGGCCTAGGAGGTCCTACCTTTACC
AGTGGAATGACGACAGGTGCAACATGAAGCACAATTACATCTGCAAGTATGAACCAGAGATTCATCCAAC
AGAGCCCGCTGAAAAGCCGTATCTTACAAACCAACCTGAAGAGACCCATGAAAATGTGGTTGTTACTGAA
GCAGGCATAATCCCAATCTAATCTATGTTATTATACCAACGATTCGGCTGCTCTACTGATACTGGTTG
CTTTGGGAACCTGCTGTTTCCAGATGTTGCATAAAAAGTAAAGGAAGATCAAAAACCTAGCCCGAATCAGTC
TACACTGTGGATTTCAAAAAGCACGAGGAAGGAAAAGTGGCATGGAGGTA

ACGCGTACGCGGCCGCTCGAGCAGAAACTCATCTCAGAAGAGGATCTGGCAGCAAATGATATCCTGGATT
ACAAGGATGACGACGATAAGGTTTAA



Protein Sequence: >MR225638 protein sequence
 Red=Cloning site Green=Tags(s)

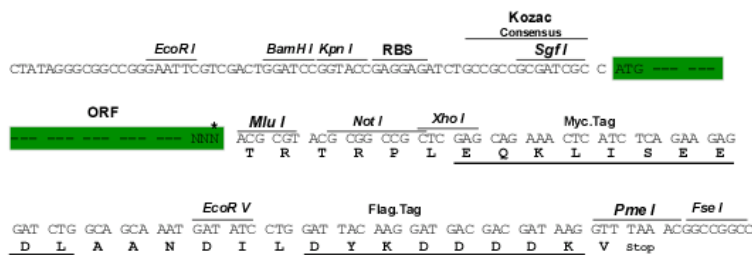
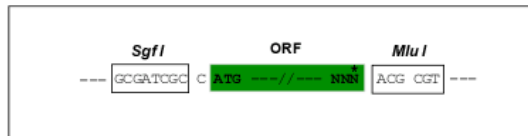
MIRIASLLLGAALLCAQGAFARRVVSQGQKVCFADVKHPCYKMAYPHELSSRVSFQEARLACESEGGVLLS
 LENEAEQKLIESMLQNLTKPGTGISDGFWIGLLRSGDGTSGACPDLYQWSDGSSSQFRNWTDEPSCG
 SEKCVVMYHQPTANPLGGPYLYQWDDRCNMKHNYICKYEPEIHPTEPAEKPYLTNQPEETHENVVTE
 AGIIPNLIYVVIPTIPLLLLILVALGTCCFQMLHKSKGRSKTSPNQSTLWISKSTRKESGMEV

TRTRPLEQKLISEEDLAANDILDYKDDDDKV

Restriction Sites: SgfI-MluI

Cloning Scheme:

Cloning sites used for ORF Shuttling:



* The last codon before the Stop codon of the ORF

ACCN: NM_139134

ORF Size: 822 bp

OTI Disclaimer: The molecular sequence of this clone aligns with the gene accession number as a point of reference only. However, individual transcript sequences of the same gene can differ through naturally occurring variations (e.g. polymorphisms), each with its own valid existence. This clone is substantially in agreement with the reference, but a complete review of all prevailing variants is recommended prior to use. [More info](#)

OTI Annotation: This clone was engineered to express the complete ORF with an expression tag. Expression varies depending on the nature of the gene.

Components: The ORF clone is ion-exchange column purified and shipped in a 2D barcoded Matrix tube containing 10ug of transfection-ready, dried plasmid DNA (reconstitute with 100 ul of water).

Reconstitution Method:

1. Centrifuge at 5,000xg for 5min.
2. Carefully open the tube and add 100ul of sterile water to dissolve the DNA.
3. Close the tube and incubate for 10 minutes at room temperature.
4. Briefly vortex the tube and then do a quick spin (less than 5000xg) to concentrate the liquid at the bottom.
5. Store the suspended plasmid at -20°C. The DNA is stable for at least one year from date of shipping when stored at -20°C.

RefSeq: [NM_139134.1](#), [NM_139134.2](#), [NM_139134.3](#), [NP_624360.2](#)

RefSeq Size: 2530 bp

RefSeq ORF: 822 bp

Locus ID: 246048

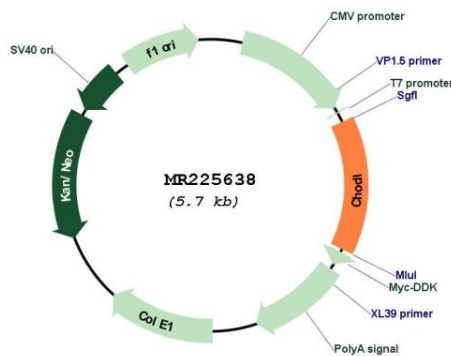
UniProt ID: [Q9CXM0](#)

Cytogenetics: 16 C3.1

MW: 30.3 kDa

Gene Summary: May play a role in the development of the nervous system such as in neurite outgrowth and elongation (PubMed:24067532). May be involved in motor axon growth and guidance (By similarity).[UniProtKB/Swiss-Prot Function]

Product images:



Circular map for MR225638