

## Product datasheet for MR225622

### Gclm (NM\_008129) Mouse Tagged ORF Clone

#### Product data:

|                           |   |
|---------------------------|---|
| Product Type:             | Expression Plasmids   |
| Product Name:             | Gclm (NM_008129) Mouse Tagged ORF Clone                           |
| Tag:                      | Myc-DDK   |
| Symbol:                   | Gclm  |
| Synonyms:                 | A1649393; Gcmc; Glclr   |
| Mammalian Cell Selection: | Neomycin  |
| Vector:                   | pCMV6-Entry (PS100001)  |
| E. coli Selection:        | Kanamycin (25 ug/mL)  |
| ORF Nucleotide Sequence:  | >MR225622 ORF sequence<br>Red=Cloning site Blue=ORF Green=Tags(s) |

TTTTGTAATACGACTCACTATAGGGCGGCCGGGAATTCGTCGACTGGATCCGGTACCGAGGAGATCTGCC  
GCC**CGGATCGCC**

ATGGGCACCGACAGCCGCGCGGGCGGCTCCTGGCGGGCCAGCACCTGCACCTGCAGACCGGGA  
ACCTGCTCAACTGGGGCCGCTGCGAAAAAGTGCCCGTCCACGCACAGCGAGGAGCTTCGGGACTGTAT  
CCAAAAGACCTTGAATGAATGGAGTTCCCAAATCAGCCCCGATTTAGTCAGGGAGTTCCAGATGTTTTG  
GAATGCACCATGTCCCATGCAGTGGAGAAGATAAATCCCGATGAAAGAGAAGAAATGAAAGTTTCTGCAA  
AACTGTTCAATTGTAGGATCGAATTCTTCATCATCAACTAGAAGTGCAGTTGACATGGCATGCTCCGTCCT  
TGGAGTTGCACAGCTGGACTCTGTGATCATGGCTTCGCCTCCGATTGAAGATGGAGTTAATCTTTCCCTTG  
GAGCATTTACAGCCTTACTGGGAGGAATTAGAGAACTTAGTTCAGAGCAAGAAAATTGTTGCTATAGGCA  
CCTCTGATCTAGACAAGACACAGTTGGAGCAGCTGTATCAGTGGGCACAGGTAACCCCAATAGTAACCA  
AGTTAACCTGGCCTCCTGCTGTGTGATGCCACCAGATTTGACTGCCTTTGCTAAACAATTTGACATACAG  
CTACTGACTCACAATGACCCGAAAGAACTGCTCTCTGAGGCAAGTTTCCAGGAAGCTCTTCAAGAAAGCA  
TCCCTGACATTGAAGCCAGGATTGGGTGCCGCTGTGGCTGCTGAGGTAAGGACTCGGTATCGTGAAGAGCAG  
GGGAATCATCAAGTCTAAAGGCTACATTCTGCAAGCCAAAAGGAGGGGCTCT

**ACGCGT**ACGCGGCCGCTCGAGCAGAACTCATCTCAGAAGAGGATCTGGCAGCAAATGATATCCTGGATT  
ACAAGGATGACGACGATAAGGTTTAA



[View online »](#)

**Protein Sequence:** >MR225622 protein sequence  
 Red=Cloning site Green=Tags(s)

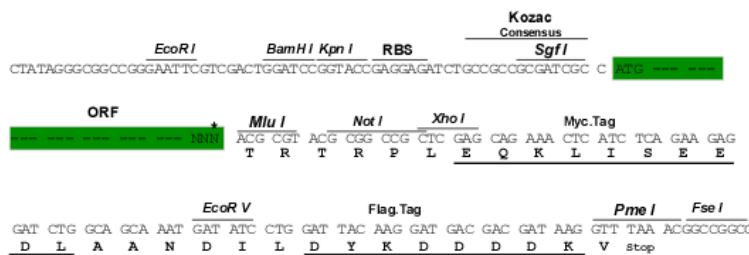
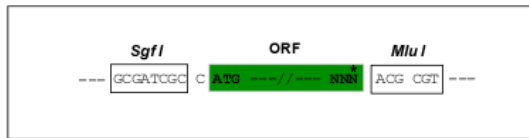
MGTDSRAAGALLARASTLHLQTGNLLNWGRLRKKCPSTHSEELRDCIQKTLNEWSSQISPDLVREFPDVL  
 ECTMSHAVEKINPDEREEMKVSAKLFIVGSNSSSSTRSAVDMACSVLGVAQLDSVIMASPPIEDGVNLSL  
 EHLQPYWELENLVQSKKIVAIGTSDLDKTQLEQLYQWAQVKPNSNQVNLASCCVMPPDLTAFAKQFDIQ  
 LLTHNDPKELLSEASFQEALQESIPDIEAQDWVPLWLLRYSVIVKSRGIKSKGYILQAKRRGS

TRTRPLEQKLISEEDLAANDILDYKDDDDKV

**Restriction Sites:** Sgfl-MluI

**Cloning Scheme:**

Cloning sites used for ORF Shuttling:



**ACCN:** NM\_008129

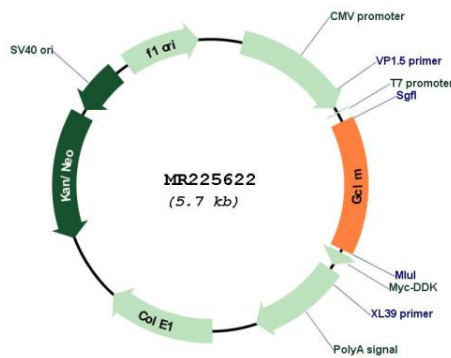
**ORF Size:** 822 bp

**OTI Disclaimer:** Due to the inherent nature of this plasmid, standard methods to replicate additional amounts of DNA in E. coli are highly likely to result in mutations and/or rearrangements. Therefore, OriGene does not guarantee the capability to replicate this plasmid DNA. Additional amounts of DNA can be purchased from OriGene with batch-specific, full-sequence verification at a reduced cost. Please contact our customer care team at [custsupport@origene.com](mailto:custsupport@origene.com) or by calling 301.340.3188 option 3 for pricing and delivery.

The molecular sequence of this clone aligns with the gene accession number as a point of reference only. However, individual transcript sequences of the same gene can differ through naturally occurring variations (e.g. polymorphisms), each with its own valid existence. This clone is substantially in agreement with the reference, but a complete review of all prevailing variants is recommended prior to use. [More info](#)

**OTI Annotation:** This clone was engineered to express the complete ORF with an expression tag. Expression varies depending on the nature of the gene.

|                               |   |
|-------------------------------|---|
| <b>Components:</b>            | The ORF clone is ion-exchange column purified and shipped in a 2D barcoded Matrix tube containing 10ug of transfection-ready, dried plasmid DNA (reconstitute with 100 ul of water).  |
| <b>Reconstitution Method:</b> | <ol style="list-style-type: none"> <li>1. Centrifuge at 5,000xg for 5min.</li> <li>2. Carefully open the tube and add 100ul of sterile water to dissolve the DNA.</li> <li>3. Close the tube and incubate for 10 minutes at room temperature.</li> <li>4. Briefly vortex the tube and then do a quick spin (less than 5000xg) to concentrate the liquid at the bottom.</li> <li>5. Store the suspended plasmid at -20°C. The DNA is stable for at least one year from date of shipping when stored at -20°C.</li> </ol> |
| <b>Note:</b>                  | Plasmids are not sterile. For experiments where strict sterility is required, filtration with 0.22um filter is required.  |
| <b>RefSeq:</b>                | <u><a href="#">NM_008129.4</a></u> , <u><a href="#">NP_032155.1</a></u>   |
| <b>RefSeq Size:</b>           | 2072 bp   |
| <b>RefSeq ORF:</b>            | 825 bp  |
| <b>Locus ID:</b>              | 14630   |
| <b>UniProt ID:</b>            | <u><a href="#">O09172</a></u>   |
| <b>Cytogenetics:</b>          | 3 52.94 cM  |
| <b>MW:</b>                    | 30.5 kDa  |

**Product images:**


Circular map for MR225622