

Product datasheet for MR225608

IL12a (NM_008351) Mouse Tagged ORF Clone

Product data:

Product Type: Expression Plasmids
 Product Name: IL12a (NM_008351) Mouse Tagged ORF Clone
 Tag: Myc-DDK
 Symbol: IL12a
 Synonyms: IL-12a; IL-12p35; LI12a; p35
 Mammalian Cell Selection: Neomycin
 Vector: pCMV6-Entry (PS100001)
 E. coli Selection: Kanamycin (25 ug/mL)
 ORF Nucleotide Sequence: >MR225608 representing NM_008351
 Red=Cloning site Blue=ORF Green=Tags(s)

TTTTGTAATACGACTCACTATAGGGCGGCCGGAATTCGTCGACTGGATCCGGTACCGAGGAGATCTGCC
 GCCCGATCGCC

ATGTGTCAATCACGCTACCTCCTCTTTTTGGCCACCCTTGCCCTCCTAAACCACCTCAGTTTGGCCAGGG
 TCATTCCAGTCTCTGGACCTGCCAGGTGTCTTAGCCAGTCCCAGAACCTGCTGAAGACCACAGATGACAT
 GGTGAAGACGGCCAGAGAAAACTGAAACATTATTCCTGCACTGCTGAAGACATCGATCATGAAGACATC
 ACACGGGACCAAACCAGCACATTGAAGACCTGTTTACCCTGGAACACACAAGAAGCAGAGTTGCCTGG
 CTACTAGAGAGACTTCTCCACAACAAGAGGGAGCTGCCTGCCCCACAGAAGACGTCTTTGATGATGAC
 CCTGTGCCTTGGTAGCATCTATGAGGACTTGAAGATGTACCAGACAGAGTTCCAGGCCATCAACGCAGCA
 CTTCAGAATCACAAACATCAGCAGATCATTCTAGACAAGGGCATGCTGGTGGCCATCGATGAGCTGATGC
 AGTCTCTGAATCATAATGGCGAGACTCTGCGCCAGAACTCCTGTGGGAGAAGCAGACCCTTACAGAGT
 GAAAATGAAGCTCTGCATCCTGCTTACGCCTTCAGCACCCGCTCGTGACCATCAACAGGGTGTGGGC
 TATCTGAGCTCCGCC

ACGCGTACGCGGCCGCTCGAGCAGAACTCATCTCAGAAGAGGATCTGGCAGCAAATGATATCCTGGATT
 ACAAGGATGACGACGATAAGGTTTAA



[View online »](#)

Protein Sequence: >MR225608 representing NM_008351
 Red=Cloning site Green=Tags(s)

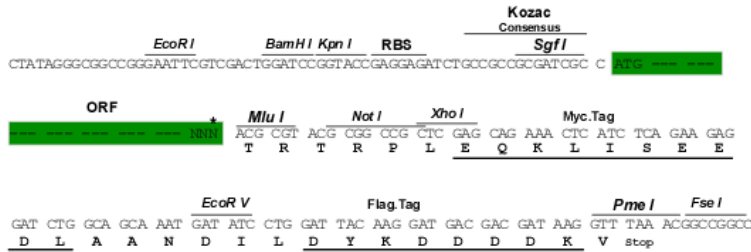
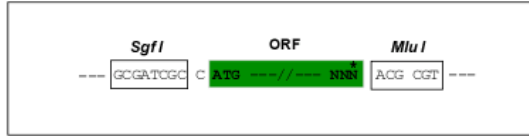
MCQSRYLLFLATLALLNHLSLARVIPVSGPARCLSQSRNLLKTTDDMVKTARECLKHYSCTAEDIDHEDI
 TRDQTSTLKTCLPELHKNESCLATRETSSTTRGSCLPQKTSLMRTLCLGSIYEDLKMYQTEFQAINAA
 LQNHNHQQIILDKGMLVAIDELMQSLNHNGETLRQKPPVGEADPYRVKMKLCILLHAFSTRVVTINRVMG
 YLSSA

TRTRPLEQKLISEEDLAANDILDYKDDDDKV

Restriction Sites: Sgfl-MluI

Cloning Scheme:

Cloning sites used for ORF Shuttling:



* The last codon before the Stop codon of the ORF

ACCN: NM_008351

ORF Size: 645 bp

OTI Disclaimer: The molecular sequence of this clone aligns with the gene accession number as a point of reference only. However, individual transcript sequences of the same gene can differ through naturally occurring variations (e.g. polymorphisms), each with its own valid existence. This clone is substantially in agreement with the reference, but a complete review of all prevailing variants is recommended prior to use. [More info](#)

OTI Annotation: This clone was engineered to express the complete ORF with an expression tag. Expression varies depending on the nature of the gene.

Components: The ORF clone is ion-exchange column purified and shipped in a 2D barcoded Matrix tube containing 10ug of transfection-ready, dried plasmid DNA (reconstitute with 100 ul of water).

Reconstitution Method:

1. Centrifuge at 5,000xg for 5min.
2. Carefully open the tube and add 100ul of sterile water to dissolve the DNA.
3. Close the tube and incubate for 10 minutes at room temperature.
4. Briefly vortex the tube and then do a quick spin (less than 5000xg) to concentrate the liquid at the bottom.
5. Store the suspended plasmid at -20°C. The DNA is stable for at least one year from date of shipping when stored at -20°C.

RefSeq: [NM_008351.3](#)

RefSeq Size: 1272 bp

RefSeq ORF: 648 bp

Locus ID: 16159

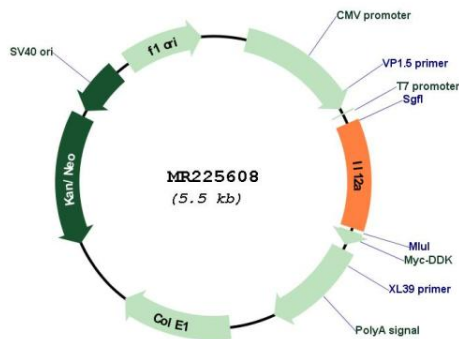
UniProt ID: [P43431](#)

Cytogenetics: 3 31.92 cM

MW: 24.6 kDa

Gene Summary: Cytokine that can act as a growth factor for activated T and NK cells, enhance the lytic activity of NK/lymphokine-activated killer cells, and stimulate the production of IFN-gamma by resting PBMC.[UniProtKB/Swiss-Prot Function]

Product images:



Circular map for MR225608