

Product datasheet for MR22531L3

Crbn (NM_175357) Mouse Tagged Lenti ORF Clone

Product data:

Product Type:	Expression Plasmids
Product Name:	Crbn (NM_175357) Mouse Tagged Lenti ORF Clone
Tag:	Myc-DDK
Symbol:	Crbn
Synonyms:	2610203G15Rik; 2900045O07Rik; AF229032; AW108261; piL
Mammalian Cell Selection:	Puromycin
Vector:	pLenti-C-Myc-DDK-P2A-Puro (PS100092)
E. coli Selection:	Chloramphenicol (34 ug/mL)
ORF Nucleotide Sequence:	The ORF insert of this clone is exactly the same as(MR225531).
Restriction Sites:	SgfI-MluI
Cloning Scheme:	

Cloning sites used for ORF Shuttling:



* The last codon before the Stop codon of the ORF.

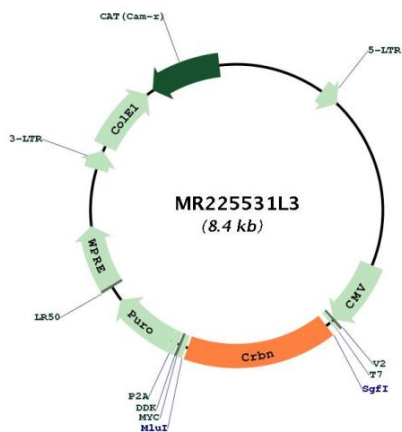
ACCN:	NM_175357
ORF Size:	1335 bp



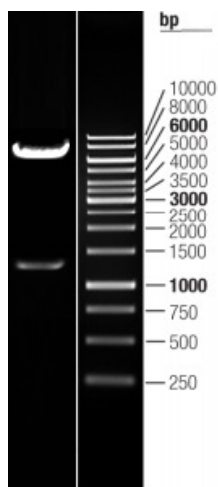
[View online »](#)

OTI Disclaimer:	The molecular sequence of this clone aligns with the gene accession number as a point of reference only. However, individual transcript sequences of the same gene can differ through naturally occurring variations (e.g. polymorphisms), each with its own valid existence. This clone is substantially in agreement with the reference, but a complete review of all prevailing variants is recommended prior to use. More info
OTI Annotation:	This clone was engineered to express the complete ORF with an expression tag. Expression varies depending on the nature of the gene.
Components:	The ORF clone is ion-exchange column purified and shipped in a 2D barcoded Matrix tube containing 10ug of transfection-ready, dried plasmid DNA (reconstitute with 100 ul of water).
Reconstitution Method:	<ol style="list-style-type: none">1. Centrifuge at 5,000xg for 5min.2. Carefully open the tube and add 100ul of sterile water to dissolve the DNA.3. Close the tube and incubate for 10 minutes at room temperature.4. Briefly vortex the tube and then do a quick spin (less than 5000xg) to concentrate the liquid at the bottom.5. Store the suspended plasmid at -20°C. The DNA is stable for at least one year from date of shipping when stored at -20°C.
RefSeq:	NM_175357.2
RefSeq Size:	4054 bp
RefSeq ORF:	1338 bp
Locus ID:	58799
UniProt ID:	Q8C7D2
Cytogenetics:	6 E1
Gene Summary:	This gene encodes a protein with a Lon protease domain, a "regulators of G protein-signaling" (RGS)-like domain and a leucine zipper. It has been proposed to regulate the assembly and surface expression of large-conductance calcium-activated potassium channels in brain and to bind thalidomide. In humans mutation in this gene causes autosomal recessive nonsyndromic cognitive disability. In mouse deficiency of this gene serves as a model to study the molecular mechanisms governing learning and memory as they relate to intellectual disability. Alternative splicing results in multiple transcript variants that encode different protein isoforms. [provided by RefSeq, Jan 2013]

Product images:



Circular map for MR225531L3



Double digestion of MR225531L3 using SgfI and MluI