

Product datasheet for MR225467

Bmp4 (NM_007554) Mouse Tagged ORF Clone

Product data:

Product Type: Expression Plasmids
Product Name: Bmp4 (NM_007554) Mouse Tagged ORF Clone
Tag: Myc-DDK
Symbol: Bmp4
Synonyms: Bmp-; Bmp-4; Bmp2; Bmp2b; Bmp2b-; Bmp2b-1; Bmp2b1
Mammalian Cell Selection: Neomycin
Vector: pCMV6-Entry (PS100001)
E. coli Selection: Kanamycin (25 ug/mL)
ORF Nucleotide Sequence: >MR225467 representing NM_007554
 Red=Cloning site Blue=ORF Green=Tags(s)

TTTTGTAATACGACTCACTATAGGGCGGCCGGAATTCGTCGACTGGATCCGGTACCGAGGAGATCTGCC
 GCC**CGATCGCC**

ATGATTCTGGTAACCGAATGCTGATGGTCGTTTTATTATGCCAAGTCCTGCTAGGAGGCGCGAGCCATG
 CTAGTTTGATACCTGAGACCGGGAAGAAAAAGTCGCCGAGATTCAGGGCCACGCGGGAGGACGCCGCTC
 AGGGCAGAGCCATGAGCTCCTGCGGGACTTCGAGGCGACACTTCTACAGATGTTTGGGCTGCGCCCGCT
 CCGCAGCCTAGCAAGAGCGCCGTCATTCCGGATTACATGAGGGATCTTTACCGGCTCCAGTCTGGGAGG
 AGGAGGAGGAAGAGCAGAGCCAGGGAACCGGGCTTGAGTACCCGGAGCGTCCCGCCAGCCGAGCCAACAC
 TGTGAGGAGTTTCCATCACGAAGAACATCTGGAGAACATCCCAGGGACCAAGTGGAGCTCTGCTTTTCGT
 TTCTCTTCAACCTCAGCAGCATCCCAGAGAATGAGGTGATCTCCTCGGCAGAGCTCCGGCTCTTTCGGG
 AGCAGGTGGACCAGGGCCCTGACTGGGAACAGGGCTTCCACCGTATAAACATTTATGAGGTTATGAAGCC
 CCCAGCAGAAATGGTTTCTGGACACCTCATCACGACTACTGGACACCAGACTAGTCCATCACAATGTG
 ACACGGTGGGAACTTTTCGATGTGAGCCCTGCAGTCCTTCGCTGGACCCGGGAAAAGCAACCAATTATG
 GGCTGGCATTGAGGTGACTCACCTCCACCAGACACGGACCCACCAGGGCCAGCAGTGAATCAGCCG
 ATCGTTACCTCAAGGGAGTGGAGATTGGGCCAACTCCGGCCCTCCTGGTCACTTTTGGCCATGATGGC
 CGGGCCATACCTTGACCCGAGAAGGGCCAAACGTAGTCCCAAGCATCACCCACAGCGGTCCAGGAAGA
 AGAATAAGAACTGCCGTGCCATTCACTATACGTGGACTTCAGTGGCTGAGTGGCTGGAATGATTGGATTGT
 GGCCCCACCCGGTACCAGGCCCTTCTACTGCCACGGGGACTGTCCCTTTCCTACTGGCTGATCACCTCAAC
 TCAACCAACCATGCCATTGTGCAGACCCTAGTCAACTCTGTTAATTCTAGTATCCCTAAGGCCTGTTGTG
 TCCCCACTGAACTGAGTGCCATTTCCATGTTGTACCTGGATGAGTATGACAAGGTGGTGTGAAAAATTA
 TCAGGAGATGGTGGTAGAGGGGTGGATGCCG

ACGCGTACGCGGCCGCTCGAGCAGAACTCATCTCAGAAGAGGATCTGGCAGCAATGATATCCTGGATT
 ACAAGGATGACGACGATAAGGTTTAA



[View online »](#)

Protein Sequence: >MR225467 representing NM_007554
Red=Cloning site Green=Tags(s)

MIPGNRMLMVVLLCQVLLGGASHASLIPETGKKKVAEIQGHAGGRRSGQSHELLRDFEATLLQMFLRRR
 PQPSKSAVIPDYMRDL YRLQSGEEEEEQSGTGLEYPERPASRANTVRSFHHEEHLNIPGTSESAFR
 FLFNLSSIPENEVISSAELRLFREQVDQGPDWEQGFHRINIYEVMKPPAEMVPGHLITRLLDTRLVHHNV
 TRWETFVDVSPAVLRWTRKQPNYGLAIEVTHLHQTRTHQGHVIRSRSLPQSGDWAQLRPLLVTFGHDG
 RGHTLTRRRAKRSPKHPQRSRKKKNKRRHSLYVDFSDVGWNDWIVAPPGYQAFYCHGDCPFPLADHLN
 STNHAIVQTLVNSVNSSIPKACCVPTELSAISMLYLDEYDKVVLKNYQEMVVEGCGCR

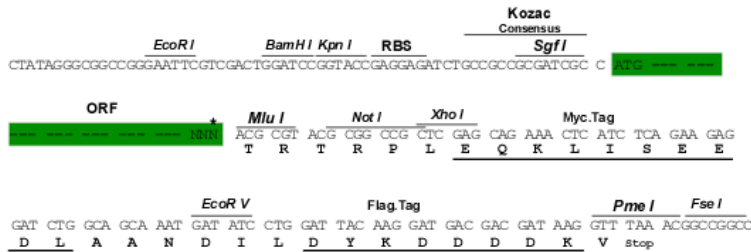
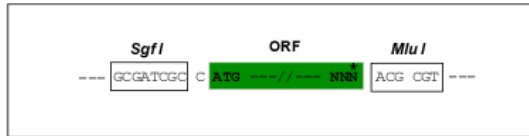
TRTRPLEQKLISEEDLAANDILDYKDDDDKV

Restriction Sites:

Sgfl-MluI

Cloning Scheme:

Cloning sites used for ORF Shuttling:



* The last codon before the Stop codon of the ORF

ACCN: NM_007554

ORF Size: 1224 bp

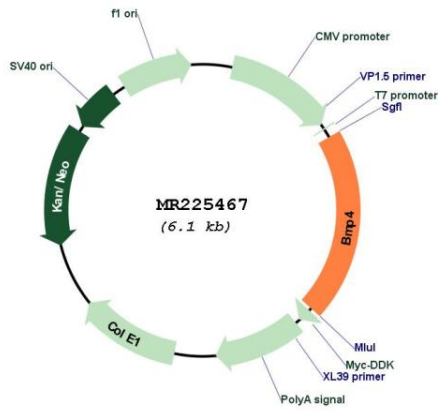
OTI Disclaimer: Due to the inherent nature of this plasmid, standard methods to replicate additional amounts of DNA in E. coli are highly likely to result in mutations and/or rearrangements. Therefore, OriGene does not guarantee the capability to replicate this plasmid DNA. Additional amounts of DNA can be purchased from OriGene with batch-specific, full-sequence verification at a reduced cost. Please contact our customer care team at custsupport@origene.com or by calling 301.340.3188 option 3 for pricing and delivery.

The molecular sequence of this clone aligns with the gene accession number as a point of reference only. However, individual transcript sequences of the same gene can differ through naturally occurring variations (e.g. polymorphisms), each with its own valid existence. This clone is substantially in agreement with the reference, but a complete review of all prevailing variants is recommended prior to use. [More info](#)

OTI Annotation: This clone was engineered to express the complete ORF with an expression tag. Expression varies depending on the nature of the gene.

Components:	The ORF clone is ion-exchange column purified and shipped in a 2D barcoded Matrix tube containing 10ug of transfection-ready, dried plasmid DNA (reconstitute with 100 ul of water).
Reconstitution Method:	<ol style="list-style-type: none">1. Centrifuge at 5,000xg for 5min.2. Carefully open the tube and add 100ul of sterile water to dissolve the DNA.3. Close the tube and incubate for 10 minutes at room temperature.4. Briefly vortex the tube and then do a quick spin (less than 5000xg) to concentrate the liquid at the bottom.5. Store the suspended plasmid at -20°C. The DNA is stable for at least one year from date of shipping when stored at -20°C.
RefSeq:	<u>NM_007554.3</u>
RefSeq Size:	1994 bp
RefSeq ORF:	1227 bp
Locus ID:	12159
UniProt ID:	<u>P21275</u>
Cytogenetics:	14 23.95 cM
MW:	46.9 kDa
Gene Summary:	This gene encodes a secreted ligand of the TGF-beta (transforming growth factor-beta) superfamily of proteins. Ligands of this family bind various TGF-beta receptors leading to recruitment and activation of SMAD family transcription factors that regulate gene expression. The encoded preproprotein is proteolytically processed to generate each subunit of the disulfide-linked homodimer. This protein regulates heart development and adipogenesis. Homozygous knockout mice die in utero, while a conditional knockout mouse exhibits defects in heart development. Transgenic mice overexpressing this gene in a neuron-specific manner exhibit a phenotype resembling the rare hereditary connective tissue disease, fibrodysplasia ossificans progressiva. [provided by RefSeq, Jul 2016]

Product images:



Circular map for MR225467