

## Product datasheet for MR225455L3

### Cldn3 (NM\_009902) Mouse Tagged Lenti ORF Clone

#### Product data:

Product Type:	Expression Plasmids
Product Name:	Cldn3 (NM_009902) Mouse Tagged Lenti ORF Clone
Tag:	Myc-DDK
Symbol:	Cldn3
Synonyms:	A1182374; Cpetr2; mRVP1
Mammalian Cell Selection:	Puromycin
Vector:	pLenti-C-Myc-DDK-P2A-Puro (PS100092)
E. coli Selection:	Chloramphenicol (34 ug/mL)
ORF Nucleotide Sequence:	The ORF insert of this clone is exactly the same as(MR225455).
Restriction Sites:	SgfI-MluI
Cloning Scheme:	

Cloning sites used for ORF Shuttling:



\* The last codon before the Stop codon of the ORF.

ACCN:	NM_009902
ORF Size:	657 bp



[View online »](#)

**OTI Disclaimer:** Due to the inherent nature of this plasmid, standard methods to replicate additional amounts of DNA in E. coli are highly likely to result in mutations and/or rearrangements. Therefore, OriGene does not guarantee the capability to replicate this plasmid DNA. Additional amounts of DNA can be purchased from OriGene with batch-specific, full-sequence verification at a reduced cost. Please contact our customer care team at [custsupport@origene.com](mailto:custsupport@origene.com) or by calling 301.340.3188 option 3 for pricing and delivery.

The molecular sequence of this clone aligns with the gene accession number as a point of reference only. However, individual transcript sequences of the same gene can differ through naturally occurring variations (e.g. polymorphisms), each with its own valid existence. This clone is substantially in agreement with the reference, but a complete review of all prevailing variants is recommended prior to use. [More info](#)

**OTI Annotation:** This clone was engineered to express the complete ORF with an expression tag. Expression varies depending on the nature of the gene.

**Components:** The ORF clone is ion-exchange column purified and shipped in a 2D barcoded Matrix tube containing 10ug of transfection-ready, dried plasmid DNA (reconstitute with 100 ul of water).

**Reconstitution Method:**

1. Centrifuge at 5,000xg for 5min.
2. Carefully open the tube and add 100ul of sterile water to dissolve the DNA.
3. Close the tube and incubate for 10 minutes at room temperature.
4. Briefly vortex the tube and then do a quick spin (less than 5000xg) to concentrate the liquid at the bottom.
5. Store the suspended plasmid at -20°C. The DNA is stable for at least one year from date of shipping when stored at -20°C.

**RefSeq:** [NM\\_009902.4](#), [NP\\_034032.1](#)

**RefSeq Size:** 1263 bp

**RefSeq ORF:** 660 bp

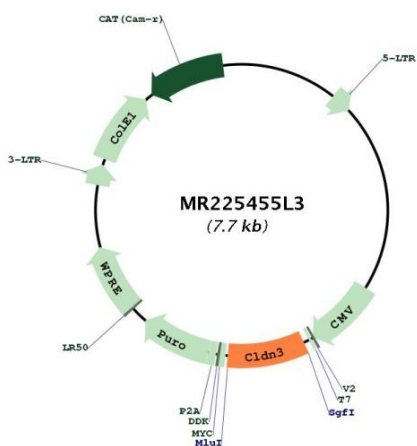
**Locus ID:** 12739

**UniProt ID:** [Q9Z0G9](#)

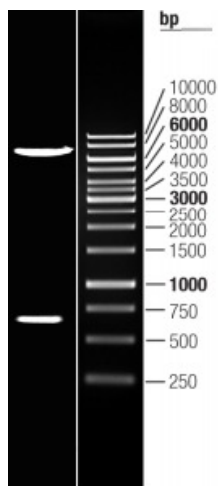
**Cytogenetics:** 5 74.93 cM

**Gene Summary:** This gene encodes a member of the claudin family. Claudins are integral membrane proteins and components of tight junction strands. Tight junction strands serve as a physical barrier to prevent solutes and water from passing freely through the paracellular space between epithelial or endothelial cell sheets, and also play critical roles in maintaining cell polarity and signal transductions. The protein encoded by this gene is a low-affinity receptor for clostridium perfringens enterotoxin (CPE) produced by the bacterium Clostridium perfringens, and the interaction with CPE results in increased membrane permeability by forming small pores in plasma membrane. This protein is highly overexpressed in uterine carcinosarcoma. This protein is also predominantly present in brain endothelial cells, where it plays a specific role in the establishment and maintenance of blood brain barrier tight junction morphology. [provided by RefSeq, Aug 2012]

Product images:



Circular map for MR225455L3



Double digestion of MR225455L3 using SgfI and MluI