

Product datasheet for **MR225451**

Pcsk1 (NM_013628) Mouse Tagged ORF Clone

Product data:

Product Type:	Expression Plasmids
Product Name:	Pcsk1 (NM_013628) Mouse Tagged ORF Clone
Tag:	Myc-DDK
Symbol:	Pcsk1
Synonyms:	Nec-1; Nec1; PC1; PC3; Phpp-1; SPC3
Mammalian Cell Selection:	Neomycin
Vector:	pCMV6-Entry (PS100001)
E. coli Selection:	Kanamycin (25 ug/mL)



[View online »](#)

**ORF Nucleotide
Sequence:**

>MR225451 ORF sequence
 Red=Cloning site Blue=ORF Green=Tags(s)

TTTTGTAATACGACTCACTATAGGGCGGCCGGGAATTCGTCGACTGGATCCGGTACCGAGGAGATCTGCC
 GCC**CGGATCGCC**

ATGGAGCAAAGAGGTTGGACTCTGCAGTGTACTGCTTTTCGCCTTCTTTTTCGCTTTGGTGTGCACTAAACA
 GTGTAAGCAAGAGGCAAGTTTGTAAATGAATGGGCGGGGAGATCCCCGGAGGCAAGAAGCTGCCTC
 TGCCATCGCCGAAGAAGCTGGGGTATGACCTTTTGGGTGAGATTGGATCACTTGAAAACTACTATTTATTC
 AAACACAAAAGCCATCCTCGGAGGTCTCGAAGAAGCGCTTTCATATCACTAAGAGGTTATCTGATGATG
 ATCGTGTGACGTGGGCTGAACAACAGTATGAAAAAGAGAGAAGTAAACGTTCAAGTTCAAAAAGACTCAGC
 ATTGGATCTCTCAATGATCCAATGTGGAATCAGCAGTGGTACTTGCAAGATACCAGAATGACTGCAGCT
 CTGCCAAGCTGGACCTCATGTAATACCTGTTGGGAAAAGGGTATTACTGGCAAAGGAGTTGTTATTA
 CTGTACTGGATGATGGCTTGAGTGAATCACACAGACATTTATGCCAATTATGATCCAGAGGCTAGCTA
 TGATTTTAAACGATAATGATCATGATCCATTTCCCGATATGATCTCACAATGAAAAACAACATGGAACA
 AGATGTGCAGGTGAAATTGCCATGCAAGCAAATAATCACAAAGTGTGGGGTTGGAGTTGCATATAATTCCA
 AAGTTGGAGGCATAAGAATGCTGGATGGCATTGTAAGTATGCCATTGAGGCTAGTTCAATTGGATTCAA
 CCCTGGCCATGTGGATATTTACAGTGAAGCTGGGGCCCTAATGATGATGGAAAACTGTGGAGGGGCT
 GGCAGACTAGCCAGAAGGCATTTGAATATGGTGTCAAACAGGGGAGACAAGGGAAAGGCTCCATCTTTG
 TCTGGGCTTCAGGGAATGGGGTTCGTGAGGAGATAACTGTGACTGTGATGGCTACACAGACAGCATTTA
 CACCATCTCTATCAGCAGTGCCTCCAGCAAGGCTGTCACTTGGTATGCAGAGAAGTGTCTTCCACA
 TTGGCTACCTCTACAGCAGTGGTATTACACAGACCAGCGAATAACAAGCGCTGACCTGCACAATGACT
 GCACAGAGACCCACACAGGCACCTCGGCTTCAGCACCCCTGGCTGCTGGTATCTTTGCTGGCCTTGA
 GGCAAACCCAAATCTTACCTGGAGAGATATGCAGCATCTGGTTGTCTGGACCTCTGAGTACGACCCATTG
 GCCAGTAACCCAGGTTGAAAAAGAATGGGGCAGGCTTGATGGTGAACAGCCGATTTGGATTTGGCTTGC
 TAAATGCCAAAGCTCTGGTGGATTTGGCTGATCCTAGGACCTGGAGAAATGTGCCTGAGAAGAAAGAATG
 TGTTGTAAAAGACAATAACTTTGAGCCTAGAGCCCTGAAAGCTAATGGAGAAGTAATTGTTGAAATCCCA
 ACAAGAGCTTGTGAAGGACAAGAAAATGCTATCAAGTCTCTGGAACATGTGCAATTTGAAGCAACAATTG
 AATATTCTCGTAGAGGAGACCTTATGTCACACTCACTTCTGCTGTTGGAACCAGCACTGTACTGTTGGC
 TAAAAGGGAAAGAGATACATCCCCAATGGCTTTAAGAATTGGGACTTCACTGTCTGTTTACATATGGGA
 GAGAATCCTGTAGGCACCTGGACATTGAAAATTACAGACATGTCTGGAAGATGCAAAATGAAGGAAGGA
 TTGTGAACTGGAAGTTGATTTTGCATGGGACATCTTCTCAACCAGAGCACATGAAGCAGCCTCGTGTGTA
 CACATCCTACAATACAGTCCAGAATGACAGGAGAGGAGTGGAAAAGATGGTGAATGTTGTGGAGAAGCGG
 CCCACACAAAAGAGCCTGAATGGCAATCTCCTGGTACCCAAAACTCCAGCAGCAGCAATGTGGAGGGTA
 GAAGGGATGAGCAGGTACAAGGAACTCCTTCAAAGGCCATGCTGCGACTCCTACAAAGTGCTTTTAGCAA
 GAATGCACTTTCAAAAACAATCACCAAAGAAGTCTCAAAGTGCAAAGCTCAGCATCCCTTATGAAAGTTTC
 TATGAAGCCTTGGAAAAGCTCAACAAGCCCTCAAAGCTTGAAGGCTCTGAAGACAGTCTGTACAGTGACT
 ATGTTGATGATTTCTATAACACAAAACCTTATAAGCATAGAGATGACAGGCTGCTGCAAGCTCTCATGGA
 CATCCTAAATGAGGAGAAT

ACGCGTACGCGGCCGCTCGAGCAGAAACTCATCTCAGAAGAGGATCTGGCAGCAAATGATATCCTGGATT
 ACAAGGATGACGACGATAAGGTTTAA

Protein Sequence: >MR225451 protein sequence
Red=Cloning site Green=Tags(s)

```
MEQRGWLQCTAF A FFCVWALNSVKAKRQFVNEWAAEIPGGQEAASAI A EELGYDLLGQIGSLENHYLF
KHKSHPRRSRRSALHITKRLSDDDRVTWAEQQYEKERSKRSVQKDSALDLFNDPMWNQQWYLQDTRMTAA
LPKLDLHVIPVWEKGITGKGVITVLD DGLEWNHTDIYANYDPEASYDFNDNDHDFPFRYDLT NENKHGT
RCAGEIAMQANNHKCGVGVAYNSKVGGIRMLDGI VTD AIEASSIGFNPGHVDIYSASWGPND DDKTVEGP
GRLAQKAF EYGVKQGRQKGSIFVWASGNGGRQGDNCDCDGYTDSIYTISSASQQLSPWYAEKCSST
LATSYSSGDYTDQRITSADLHNDCTETHTGTSASAPLAAGIFALALEANPNLTWRDMQHLV VWTSEYDPL
ASNPGWKKNAGLMVNSRF GFLNNAKALVDLADPRTWRNVPEKKECVVDNNFEP RALKANGEVIVEIP
TRACEGQENA IKSLEHVQFEATIEYSRRGDLHVLTSAVGTSTVLLAERERDTSPNGFKNWDFMSVHTWG
ENPVGWTW LKITDMSGRMQNEGRIVNWKLILHGTSSQPEHMKQPRVYTSYNTVQNDRRGVEKMMNVVEKR
PTQKSLNGLLVPKNSSSNVEGRRDEQVQGTPSKAMLRLLQSAFSKNALSKQSPKKS P SAKLSIPYESF
YEALEKLNKPSKLEGS EDSL YSDYVDFYNTKPYKHRDDRLLQALMDILNEEN
```

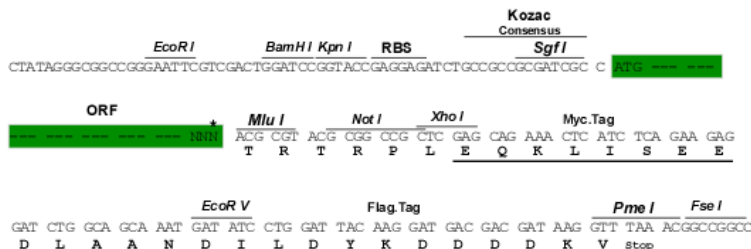
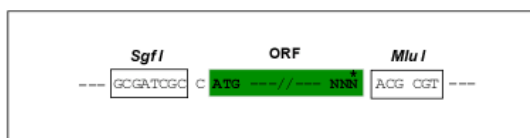
TRTRPLEQKLISEEDLAANDILDYKDDDDKV

Restriction Sites:

Sgfl-MluI

Cloning Scheme:

Cloning sites used for ORF Shuttling:



* The last codon before the Stop codon of the ORF

ACCN: NM_013628

ORF Size: 2262 bp

OTI Disclaimer: The molecular sequence of this clone aligns with the gene accession number as a point of reference only. However, individual transcript sequences of the same gene can differ through naturally occurring variations (e.g. polymorphisms), each with its own valid existence. This clone is substantially in agreement with the reference, but a complete review of all prevailing variants is recommended prior to use. [More info](#)

OTI Annotation: This clone was engineered to express the complete ORF with an expression tag. Expression varies depending on the nature of the gene.

Components: The ORF clone is ion-exchange column purified and shipped in a 2D barcoded Matrix tube containing 10ug of transfection-ready, dried plasmid DNA (reconstitute with 100 ul of water).

Reconstitution Method:

1. Centrifuge at 5,000xg for 5min.
2. Carefully open the tube and add 100ul of sterile water to dissolve the DNA.
3. Close the tube and incubate for 10 minutes at room temperature.
4. Briefly vortex the tube and then do a quick spin (less than 5000xg) to concentrate the liquid at the bottom.
5. Store the suspended plasmid at -20°C. The DNA is stable for at least one year from date of shipping when stored at -20°C.

RefSeq: [NM_013628.1](#), [NM_013628.2](#), [NP_038656.1](#)

RefSeq Size: 2516 bp

RefSeq ORF: 2262 bp

Locus ID: 18548

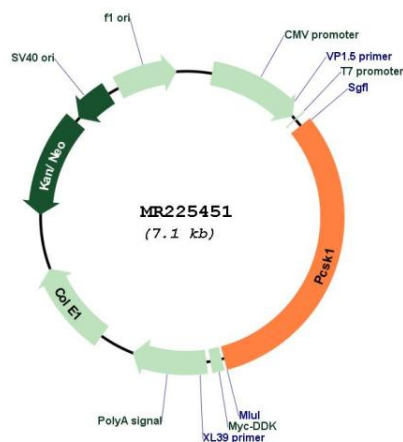
UniProt ID: [P63239](#)

Cytogenetics: 13 40.63 cM

MW: 84.2 kDa

Gene Summary: Involved in the processing of hormone and other protein precursors at sites comprised of pairs of basic amino acid residues. Substrates include POMC, renin, enkephalin, dynorphin, somatostatin, insulin and AGRP.[UniProtKB/Swiss-Prot Function]

Product images:



Circular map for MR225451