

Product datasheet for **MR225446**

NdrG4 (NM_145602) Mouse Tagged ORF Clone

Product data:

Product Type:	Expression Plasmids
Product Name:	NdrG4 (NM_145602) Mouse Tagged ORF Clone
Tag:	Myc-DDK
Symbol:	NdrG4
Synonyms:	D8Bwg1337e; Ndr1-rs; Ndr4; R74996; SMAP-8
Mammalian Cell Selection:	Neomycin
Vector:	pCMV6-Entry (PS100001)
E. coli Selection:	Kanamycin (25 ug/mL)
ORF Nucleotide Sequence:	>MR225446 ORF sequence Red=Cloning site Blue=ORF Green=Tags(s)

TTTTGTAATACGACTCACTATAGGGCGGCCGGAATTCGTCGACTGGATCCGGTACCGAGGAGATCTGCC
GCC**CGATCGCC**

ATGCCGGAGTGTGGGATGGGAACATGACATCGAGACGCCTTATGGACTTCTGCATGTGGTGATCCGGG
GCTCTCCAAAGGGAACCGCCAGCCATCTCACCTACCATGATGTGGTCTCAATCACAAGCTGTGCTT
CAACACCTTCTCAACTTTGAGGACATGCAGGAGATCACCAAACACTTTGTGGTGTCCACGTGGATGCC
CCTGGGCAGCAGGTGGGAGCGTCACAGTCCCTCAGGGGTACCAGTCCCTCCATGGAGCAGCTGGCCG
CCATGCTCCCAGTGTGGTACAGCACTTTGGGTTAAGTACGTGATTGGCATTGGAGTGGGAGCCGGAGC
CTACGTGCTGGCCAAGTTTGCACTCATCTCCCTGACCTGGTGGAGGGGCTGGTGTGATGAACATTGAC
CCCAACGGCAAAGGCTGGATTGACTGGGCTGCCACCAAGCTCTCTGGCTTGACCAGCACTTTACCAGACA
CTGTACTCTCCATCTCTTCAGCCAGGAGGAGCTGGTGAACAACCGGAGCTGGTGCAGAGCTACCGGCA
GCAGATCTCAAACGTGGTGAACCGGCAACCTGCAGCTCTTCTGGAACATGTACAACAGCCGAGAGAC
CTTGATATTAACCGACCTGGGACGGTGCCCAATGCCAAGACACTCCGCTGCCAGTGTGGTGTAGTCG
GAGATAATGCACCTGCTGAGGAAGGGTGGTTGAGTGTAACTCCAACCTGGACCAACCACTACGACCTT
CCTGAAGATGGCAGATTCTGGTGGTCTTCTCAGGTGACACAACCGGAAAGCTGACTGAGGCCTTCAAG
TACTTCTGCAAGGCATGGGCTACATGCCCTCAGCCAGCATGACCCGCCCTCGCACGCTCAGTACCGCGT
CCCTCACCAGCGCCAGTTCCGTGGACGGCAGCCGCCCTCAGCCCTGCGCCCACTCAGACAGCAGTGAGGG
GATGGGCCAGGTCAACCACCATGGAGGTGTCCTGC

ACGCGTACGCGGCCGCTCGAGCAGAACTCATCTCAGAAGAGGATCTGGCAGCAAATGATATCCTGGATT
ACAAGGATGACGACGATAAGGTTTAA



[View online »](#)

Protein Sequence: >MR225446 protein sequence
Red=Cloning site Green=Tags(s)

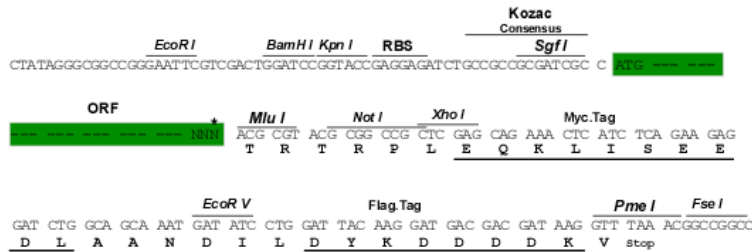
MPECWDGEHDIETPYGLLHVIVIRGSPKGNRPAILTYHDVGLNHKLCFNTFFNFEDMQEITKHFVCHVDA
 PGQVVGASQFPQGYQFPSMEQLAAMLPSVVQHFQFKYVIGIGVGAGAYVLAKFALIFPDLEGLVLMNID
 PNGKGWIDWAATKLSGLTSTLPDVTLSHLFSQEELVNTELVSQRQISNVVNQANLQLFWMYNSRRD
 LDINRPGTVPNAKTLRCPVMLVVDNAPAEEGVVECNKLDPTTTTFLKMADSGGLPQVTQPGKLEAFK
 YFLQGMGYMPSASMTLARSRTASLTSASSVDGSRPQCAHSDSSEGMGQVNHTMEVSC

TRTRPLEQKLISEEDLAANDILDYKDDDDKV

Restriction Sites: SgfI-MluI

Cloning Scheme:

Cloning sites used for ORF Shuttling:



* The last codon before the Stop codon of the ORF

ACCN: NM_145602

ORF Size: 1020 bp

OTI Disclaimer: The molecular sequence of this clone aligns with the gene accession number as a point of reference only. However, individual transcript sequences of the same gene can differ through naturally occurring variations (e.g. polymorphisms), each with its own valid existence. This clone is substantially in agreement with the reference, but a complete review of all prevailing variants is recommended prior to use. [More info](#)

OTI Annotation: This clone was engineered to express the complete ORF with an expression tag. Expression varies depending on the nature of the gene.

Components: The ORF clone is ion-exchange column purified and shipped in a 2D barcoded Matrix tube containing 10ug of transfection-ready, dried plasmid DNA (reconstitute with 100 ul of water).

Reconstitution Method:

1. Centrifuge at 5,000xg for 5min.
2. Carefully open the tube and add 100ul of sterile water to dissolve the DNA.
3. Close the tube and incubate for 10 minutes at room temperature.
4. Briefly vortex the tube and then do a quick spin (less than 5000xg) to concentrate the liquid at the bottom.
5. Store the suspended plasmid at -20°C. The DNA is stable for at least one year from date of shipping when stored at -20°C.

RefSeq: [NM_145602.4](#)

RefSeq Size: 2927 bp

RefSeq ORF: 1020 bp

Locus ID: 234593

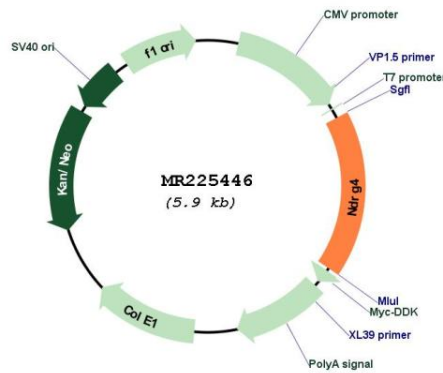
UniProt ID: [Q8BTG7](#)

Cytogenetics: 8 D1

MW: 37.2 kDa

Gene Summary: Contributes to the maintenance of intracerebral BDNF levels within the normal range, which is necessary for the preservation of spatial learning and the resistance to neuronal cell death caused by ischemic stress. May enhance growth factor-induced ERK1 and ERK2 phosphorylation. May attenuate NGF-promoted ELK1 phosphorylation in a microtubule-dependent manner.[UniProtKB/Swiss-Prot Function]

Product images:



Circular map for MR225446