

Product datasheet for **MR225433**

Arhgap42 (NM_027823) Mouse Tagged ORF Clone

Product data:

Product Type:	Expression Plasmids
Product Name:	Arhgap42 (NM_027823) Mouse Tagged ORF Clone
Tag:	Myc-DDK
Symbol:	Arhgap42
Synonyms:	9030420J04Rik; BE136619
Mammalian Cell Selection:	Neomycin
Vector:	pCMV6-Entry (PS100001)
E. coli Selection:	Kanamycin (25 ug/mL)



[View online »](#)

ORF Nucleotide Sequence:

>MR225433 representing NM_027823
 Red=Cloning site Blue=ORF Green=Tags(s)

TTTTGTAATACGACTCACTATAGGGCGGCCGGGAATTCGTGCGACTGGATCCGGTACCGAGGAGATCTGCC
 GCC**CGGATCGCC**

ATGGGGCTGCCACTCTGGAGTTCAGCGATTTCGATTTGGACAGCCCGGATTTTAGGGAGCGATTGCAGT
 GTCACGAGATCGAGCTGGAGAGAACCAACAAGTTCATCAAAGAGCTGCTGAAGGATGGCTCTCTGCTCAT
 CGGGGCGCTGAGAAATCTGTCCATGGCTGTACAGAAGTTTTCCAGTCTCTGCAAGACTTCCAGTTTGAG
 TGTATTGGAGATGCAGAACTGATGATGAAATTAGTATTGCTCAGTCACTGAAAGAATTCGCAAGGCTAC
 TTATTGCTGTAGAAGAAGAAAGGCTAGACTGATTCAAAATGCTAATGATGATTAATTGCACCCCTTGA
 GAAATTTGAAAAGAACAGATCGGTGCAGCTAAAGCAGATTACAGATTGGCCGAGAACATCAGAACTTC
 TATGAAGCTTCATTAGAATATGTCTTTAAGATCCAAGAAGTTCAGAGAAGAAGAAGTTTGAGTTTGTGG
 AACCGCTTTTGTCTTCCCTCAGGGTTTGTACATTTTACCACGAGGGATATGAACTTGCCAGGAATT
 TGCACCGTACAAGCAACAGCTACAATTCAACTTGCAGAATACAAGGAATAACTTTGAAAGCACTCGGCAA
 GAAGTGGAGAGACTGATGCAGAGGATGAAGTCTGCCAATCAAGATTATAGACCTCCAGCCAGTGGACCA
 TGGAGGGCTATCTTTACGTCCAGGAGAAAAGACCCTGGGTTTCACATGGACTAAACACTACTGTACTTA
 CGCAAAGGAAGCAAAATGTTCACAATGAGCGTCTCCGATGTGAAAGCCAGTGGGAAGATGAACGGCCTT
 GTTACTGGTTCGCTGAAATGTTAAATTAAGTTCGTGTATCCGACGGAAGACAGATTCCATTGACAAGC
 GCTTCTGCTTTGACATAGAAGTGGTCGAAAGGCATGGCATCATTACGCTACAGGCATTCTCTGAGCTAA
 CCGGAAGCTCTGGCTGGAGGCCATGGATGGGAAGAACCGATTTACCGTTACCCGCCATAATTAGCAAG
 AAAGAAGAAATGACTTAAATGAAGCAGGCTTCAACTTTGTGAGAAAATGCATTCAAGCTGTAGAAATGA
 GAGGCATCACCATCTTGGCCTGTACCGAATAGGAGGAGTGAACCTCAAGTCCAGAAATGAACTGAAACAC
 CACATTTTCTCCCAAGTCCCCTCTGATATGGACATTGATATTGAGCTGTGGGACAATAAGACTATAACG
 AGTGGGCTGAAAAACTACCTCAGGTGCCTTGCAGAACCCTAATGACTTACAAATTCACAAAGGATTTCA
 TCATTGCTGTCAAGTCAAGCAGACCAAACTACAGGGTGGAGGCAGTCCATGCACTGGTACACAAATGGC
 GGAGAAAAACAGAGAGATGCTGGACATCTTGATAAAACACCTTCTCAAAGTACTACTACATAGCCAACAA
 AATCTTATGACCATCTCAAATCTCGGTGCATATTTGGTCCAACCCTGATGAGAGCACAGGAGGAAACTG
 TGGCTGCCATGATGAACATCAAATTTCAGAACATAGTGGTGGAAATCCTAATCGAGCACTATGAGAAGAT
 TTTTCATACTGCCCCAGACCCCAACATTCCTCTCCTCAGCCTCAGTCTCGATCGGGATCCCGAAGAACC
 CGGGCCATCTGCCTGTCCACAGGTTCTCGGAAGCCAGAGGGAGGTACACGCCGTGCCTGGCAGAGCCTG
 ATAGTGACTCCTACAGCAGCAGCCAGACAGCACTCCCATGGGCAGCATAGAGTCCGCTCTCTCCCACTC
 CTCTGAACAAAACAGCACCACAAAATCCACTGCCTGCCAGCCAGGGAGAAGTCAGGAGGAATCCCTGG
 ATCACAACCCCATCATCTTCCAATGGACAGAAAAGTCAGGGTCTCTGGACAACACTAGTCCAGAATCAAGTT
 CTCGAGAAGATGCAACCAAAACAGATGTGGAGTCAAGTTCAGAGTGTGGCCTCTATCACAATCCCGGG
 GAATGTCTCTCCCCATAGACCTAGTCAAAAAGGGCCCTATGGGCTCTCAGGACTGAAAAGATCCTCT
 GCTTCTCCTCTCTCAGATCCATCTCTGCAGCTGAAGGAAACAAGAGCTACAGTGGATCCATTCAAAGCT
 TAACCTTATAGGCTCCAAGAGTCACTAAAGCCATACCAAACCCAGAGCTGCCTCAAAAATGTGCAG
 GAGGTTAAGGCTAGACACTGCCTCCAGCAATGGCTACCAGCGACCTGGCTCAGTGTGGCAGCAAAGGCT
 CAACTCTTTGAAAATGCTGGGTACCCAAGCCAGTTTCTTCTGGACGCCAAGCCCAAGCCATGACTCCT
 GCAAAGCCGAGCACAGCCATGAGCTGTCTTCCCCAGGGGGCCATTTTTTCCAATGTACCCCGTCCGT
 GGAGCCAGGGTGGCTAAAGGCAACTTATGAAGGCAGAACAGGACTAGTCCCTGAAAACACTACGTTGTCTTC
 CTC

ACGCGTACGCGGCCGCTCGAGCAGAACTCATCTCAGAAGAGGATCTGGCAGCAATGATATCCTGGATT
 ACAAGGATGACGACGATAAGGTTTAA

Protein Sequence: >MR225433 representing NM_027823
 Red=Cloning site Green=Tags(s)

MGLPTLEFSDSYLDSPDFRERLQCHEIELERTNFKIKELLKDGSL LIGALRNL SMAVQKFSQSLQDFQFE
 CIGDAETDDEISIAQSLKEFARLLIAVEEERRRLIQNANDVLIAPLEKFRKEQIGAAKADSQIGREHONF
 YEASLEYVFKIQEVQEKKKFEFVEPLL SFLQGLFTFYHEGYELAQEFAPYKQLQFNLQNTNRFESTRQ
 EVERLMQRMKSANQDYRPPSQWTMEGYL YVQEKRP L GFTWTKHYCTYDKGSKMFTMSVSDVKASGKMNGL
 VTGSPPEMFKLKSCIRRKTD SIDKRF C FDI EVVERHGIITLQAFSEANRKLWLEAMDGKEPIYTLPAIISK
 KEEMYLNEAGFNFRKCIQAVEMRGITILGLYRIGGVNSKVQKLMNTTSPKSPDMDIDIELWDNKTIT
 SGLKNYLRCLAEPLMTYK LHKDF I IAVKSDDQNYRVEAVHALVHKLPEKNREMLDILIKHLLKVSLSHSQQ
 NLMTISNLGVIFGPTLMRAQEETVAAMNIKFQNI VVEILIEHYEKIFHTAPDPNIPLPQPQSRSGSRRT
 RAICLSTGSRKPRGRYTPCLAEPDSDSYSSSPDSTPMGSIESLSSHSEQNSTTKSTACQPREKSGGIPW
 IITPSSNGQKSQGLWTTSPSSSREDATKTDVESDCQSVASITIPGNVSPPIDLVKKGYPGLSGLKRSS
 ASSSLRSISAAEKNKSYSGSIQSLT SIGSKESPKAIPNPELPPKMCRRRLD TASSNGYQRPQSVVAKA
 QLFENAGSPKPVSSGRQAQAMYSCKAEHSHEL SFPQGAIFSNVHPSVEPGWLKATYEGRTGLVPENYVVF
 L

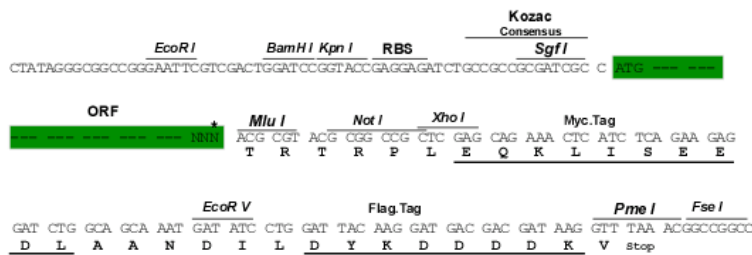
TRTRPLEQKLISEEDLAANDILDYKDDDDKV

Chromatograms: https://cdn.origene.com/chromatograms/mm9048_e10.zip

Restriction Sites: SgfI-MluI

Cloning Scheme:

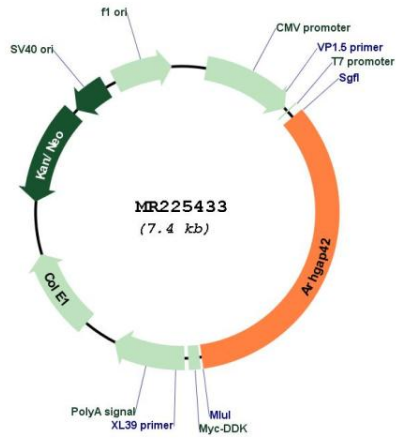
Cloning sites used for ORF Shuttling:



* The last codon before the Stop codon of the ORF

ACCN:	NM_027823
ORF Size:	2523 bp
OTI Disclaimer:	The molecular sequence of this clone aligns with the gene accession number as a point of reference only. However, individual transcript sequences of the same gene can differ through naturally occurring variations (e.g. polymorphisms), each with its own valid existence. This clone is substantially in agreement with the reference, but a complete review of all prevailing variants is recommended prior to use. More info
OTI Annotation:	This clone was engineered to express the complete ORF with an expression tag. Expression varies depending on the nature of the gene.
Components:	The ORF clone is ion-exchange column purified and shipped in a 2D barcoded Matrix tube containing 10ug of transfection-ready, dried plasmid DNA (reconstitute with 100 ul of water).
Reconstitution Method:	<ol style="list-style-type: none">1. Centrifuge at 5,000xg for 5min.2. Carefully open the tube and add 100ul of sterile water to dissolve the DNA.3. Close the tube and incubate for 10 minutes at room temperature.4. Briefly vortex the tube and then do a quick spin (less than 5000xg) to concentrate the liquid at the bottom.5. Store the suspended plasmid at -20°C. The DNA is stable for at least one year from date of shipping when stored at -20°C.
RefSeq:	NM_027823.2
RefSeq Size:	5404 bp
RefSeq ORF:	2526 bp
Locus ID:	71544
UniProt ID:	B2RQE8
Cytogenetics:	9 A1
MW:	95.1 kDa
Gene Summary:	May influence blood pressure by functioning as a GTPase-activating protein for RHOA in vascular smooth muscle.[UniProtKB/Swiss-Prot Function]

Product images:



Circular map for MR225433