

## Product datasheet for **MR225418**

### **Kcnmb3 (NM\_001195074) Mouse Tagged ORF Clone**

#### Product data:

**Product Type:** Expression Plasmids  
**Product Name:** Kcnmb3 (NM\_001195074) Mouse Tagged ORF Clone  
**Tag:** Myc-DDK  
**Symbol:** Kcnmb3  
**Synonyms:** EG435726; Gm5707  
**Mammalian Cell Selection:** Neomycin  
**Vector:** pCMV6-Entry (PS100001)  
**E. coli Selection:** Kanamycin (25 ug/mL)  
**ORF Nucleotide Sequence:** >MR225418 representing NM\_001195074  
 Red=Cloning site Blue=ORF Green=Tags(s)

TTTTGTAATACGACTCACTATAGGGCGCCGGGAATTCGTCGACTGGATCCGGTACCGAGGAGATCTGCC  
 GCC**CGATCGCC**

ATGCAGCCCTTCAGCATCCCTGTCCAAATCACGCTACAGGGTGGCCGGAGGCGCCAAGGGAGGACAGCAC  
 TTCCGGCCTCGGGCAAAATCAATGGAGATCCCTGAAGGTGCACCCAAAGCTTCCATCAAGCGCTGGTGA  
 GGACCGGGCCATGCTGCTGGCGTGGCCATGATGGCTTCTCTGTACTGATGTTCTTCTGTTGGGGACC  
 ACTGTGTTGAAGCCCTTCATGCTCAGATCTCCAGAGAAGAATCAAAGTGCACCACTGTCCACACACACA  
 TTGTGGATGACGGGCTGGACTTTTCTTACCTGTGAGGGTAGCTGCCAGGACCACGGGAGATCCCATG  
 CCTGCAGGTGTTGTAACCTGAGCCACTCGGGACAGAAAGTGCTTCTCCACTACGACGACGAGGCCATC  
 AGGACCAACCCCAAGTGCTTTTACACACCAAGTGTACGGAGACCGGGATGATCTGCTCAACAGCGTCC  
 TGGACATCAAGGAATTCTTCGATCACAACAATGGAACCTTCCCCTGTTTCTACAGTCCCGATGGCCCTT  
 GGGAGTTGTTCTGAGGAAGTCTGGCCACAAGGTTGCTTTCACTGCTTATTTGGCCTTTATTGACTTTG  
 CTGGGAGGCGCCCTGATTGTTGGCTTGGTTAGGCTAACACAACATCTGCTCTTTCAGTGTGAACAGTACA  
 GCACAGTGGTAAGAGCT

**ACGCGT**ACGCGGCCGCTCGAGCAGAAACTCATCTCAGAAGAGGATCTGGCAGCAAATGATATCCTGGATT  
 ACAAGGATGACGACGATAAGGTTTAA



[View online »](#)

**Protein Sequence:** >MR225418 representing NM\_001195074  
Red=Cloning site Green=Tags(s)

MQPFSSIPVQITLQGGRRRQGRALPASGKINGDPLKVHPKLPSSAGEDRAMLLGVAMMASSVLMFFLLGT  
 TVLKPFFMLRSPREESNCTTVHTHIVDDGLDFSTCEGSCQDHGRSPCLQVFVNLSHSGQKVLHHDDEAI  
 RTNPKCFYTPKCHGDRDDLNSVLDIKEFFDHNNGTFPCFYSPDGPLGVVLRKSGHKVVFHCLFWPLLLTL  
 LGGALIVGLVRLTQHLSFQCEQYSTVVRA

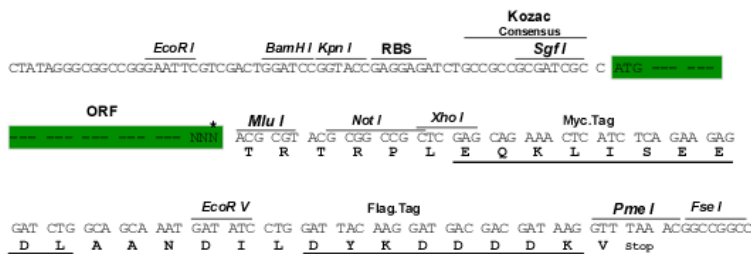
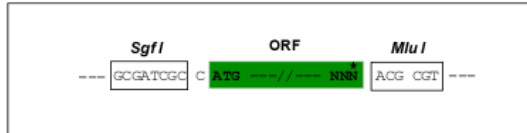
TRTRPLEQKLISEEDLAANDILDYKDDDDKV

**Chromatograms:** [https://cdn.origene.com/chromatograms/mm9024\\_f01.zip](https://cdn.origene.com/chromatograms/mm9024_f01.zip)

**Restriction Sites:** SgfI-MluI

**Cloning Scheme:**

Cloning sites used for ORF Shuttling:



\* The last codon before the Stop codon of the ORF

**ACCN:** NM\_001195074

**ORF Size:** 717 bp

**OTI Disclaimer:** The molecular sequence of this clone aligns with the gene accession number as a point of reference only. However, individual transcript sequences of the same gene can differ through naturally occurring variations (e.g. polymorphisms), each with its own valid existence. This clone is substantially in agreement with the reference, but a complete review of all prevailing variants is recommended prior to use. [More info](#)

**OTI Annotation:** This clone was engineered to express the complete ORF with an expression tag. Expression varies depending on the nature of the gene.

**Components:** The ORF clone is ion-exchange column purified and shipped in a 2D barcoded Matrix tube containing 10ug of transfection-ready, dried plasmid DNA (reconstitute with 100 ul of water).

**Reconstitution Method:**

1. Centrifuge at 5,000xg for 5min.
2. Carefully open the tube and add 100ul of sterile water to dissolve the DNA.
3. Close the tube and incubate for 10 minutes at room temperature.
4. Briefly vortex the tube and then do a quick spin (less than 5000xg) to concentrate the liquid at the bottom.
5. Store the suspended plasmid at -20°C. The DNA is stable for at least one year from date of shipping when stored at -20°C.

**RefSeq:** [NM\\_001195074.1](#), [NP\\_001182003.1](#)

**RefSeq Size:** 720 bp

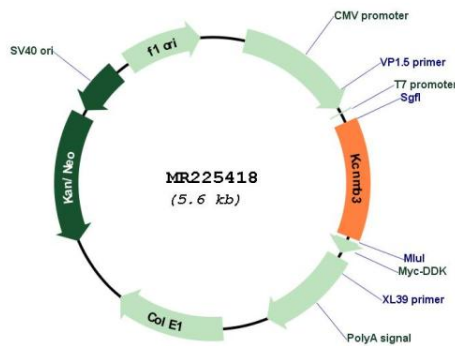
**RefSeq ORF:** 720 bp

**Locus ID:** 100502876

**Cytogenetics:** 3 A3

**MW:** 26.9 kDa

**Product images:**



Circular map for MR225418