

## Product datasheet for **MR225402**

### **Csf2rb2 (NM\_007781) Mouse Tagged ORF Clone**

#### **Product data:**

Product Type:	Expression Plasmids
Product Name:	Csf2rb2 (NM_007781) Mouse Tagged ORF Clone
Tag:	Myc-DDK
Symbol:	Csf2rb2
Synonyms:	AIC2A; Betall3; Bil3; Csfgmrb; Il3r; Il3rb; Il3rb2
Mammalian Cell Selection:	Neomycin
Vector:	pCMV6-Entry (PS100001)
E. coli Selection:	Kanamycin (25 ug/mL)



[View online »](#)

ORF Nucleotide  
Sequence:

>MR225402 representing NM\_007781  
 Red=Cloning site Blue=ORF Green=Tags(s)

TTTTGTAATACGACTCACTATAGGGCGGCCGGGAATTCGTCGACTGGATCCGGTACCGAGGAGATCTGCC  
 GCC**CGGATCGCC**

ATGGACCAGCAAATGGCACTCACATGGGGGCTGTGCTACATGGCACTGGTGGCTCTCTGCTGGGGACAG  
 AGGTGACAGAGGAAGAAGAAACGGTCCCTCTGAAGACTCTGGAGTGTACAATGACTACACCAACCGTAT  
 CATCTGCAGCTGGGCAGACACAGAGGATGCCAGGGGCTAATCAACATGACCCTCTCTATCACCAGCTA  
 GACAAGATTCAATCAGTGTCTGTGAGCTCAGTGAGAACTCATGTGGTCAGAGTGCCCGTCATCCCACC  
 GCTGTGTGCCAGAAGATGTGTCATCCCCTACACACGATTTTCTAATGGAGATAACGACTACTACTCCTT  
 CCAGCCAGATCGTGACCTGGGCATCCAGCTCATGGTCCCCTGGCCAGCATGTGCAGCCACCCCTCCC  
 AAGGACATCCACATCAGCCCTCTGGGGATCATTTCTGCTGGAATGGAGTGTATCTCTTGGGGATTCCC  
 AGGTCTCCTGGCTTTCATCAAAGGACATAGAGTTTGAGGTGGCTTATAAGCGGCTTCAGGACTCCTGGGA  
 GGATGCCTCCAGTCTCCACACTAGCAACTTTCAGGTGAATTTAGAGCCAAAGCTATTCCTACCCAACAGC  
 ATCTATGCTGCCCGTGTGCGCACTCGGCTGTCCGCGGGTCAAGCTTGTCTGGGAGACCCAGCAGATGGA  
 GCCCAGAGGTTCACTGGGACTCCAGCCAGGGGACAAGGCCAGCCACAGAACCTTCAATGCTTCTTTGA  
 TGGGATCCAGTCTCTCCACTGCTCCTGGGAGGTGTGGACCCAGACGACTGGCTCTGTTTCTTTGGGCTC  
 TTCTATCGCCCCAGCCCTGCAGCTCCGGAGGAGAAATGCTCTCCGGTGGTGAAGGAGCCGACGGCCAGCG  
 TCTACACCCGCTACCGCTGCAGTCTACCTGTGCCTGAGCCAGTGACACAGCCAGTACACAGTCTCTGT  
 TAAGCACCTGGAACAAGGAAGTTCATCATGAGCTATTACCACATCCAGATGGAACCTCCAATCCTCAAC  
 CAGACCAAGAACAGAGACAGCTACAGCTGCATTGGGAACTCAGAAAATACCCAATACATTGATCACA  
 CTTCCAGTCCAGTACAAGAAGAGTCAAGAGCTGGAAGGACAGCAAGACAGAAAACCTAGGTCCGAGT  
 CAATAGCATGGACCTGCCCCAGCTGGAGCCGACACCTCATACTGCGCCAGGGTGAGGGTCAAGCCCATC  
 TCTGACTACGACGGGATCTGGAGCGAGTGGAGCAATGAGTACACTTGGACGACTGACTGGGTGATGCCCA  
 CGCTGTGGATAGTCTCATCCTGGTCTTTCTCATCTTACCTTGTCTCTGGCTCTCCACTTTGGCCGTGT  
 TTATGGGTACAGGACATACAGGAAGTGAAGGAAAAGATCCCAACCCAGCAAGAGCCTCCTGTTCCAG  
 GATGGAGGTAAGGTCTCTGGCCTCCTGGCAGCATGGCAGCCTTCGCGACTAAGAACCCCGCTCTCCAGG  
 GGCCACAGAGCAGGCTTCTTGTGAGCAACAGGGGGTGTATGAACATTTGGAAGACAACAACGTGTC  
 ACCTCTCACTATAGAGGACCCTAATAAATTCGAGATCCACCATCCAGGCTGATACAACCCAGCTGCC  
 TCATCTGAATCCACAGAGCAACTTCCAATGTTCAAGTAGAGGGACCAATTCCTTCTAGCCGACCCAGGA  
 AGCAATTAACCCAGCTTTGACTTCAATGGGCCCTACCTGGGGCCTCCCAATCCCACTCCCTGCCTGATCT  
 CCCAGGCCAGCTGGGTTCTCCCCAGTGGTGGGAGCCTGAAGCCAGCACTGCCAGGCTCCTTGGAGTAC  
 ATGTGTCTGCCCCCTGGAGGTCAAGTGAACCTGGTCCCATTGTCCAGGTGATGGGACAGGGCCAGGCTA  
 TGGATGTGCAGTGTGGTCCAGCCTGGAGACCACAGGGAGCCCTTCCGTGGAGCCAAAGGAGAACCCTCC  
 AGTTGAGCTGAGCGTGGAGAAACAGGAGGCAAGGGACAACCCAATGACTCTTCCCATAAGCTCTGGGGGC  
 CCTGAGGGCAGTATGATGGCCTCTGATTATGCTACTCTGGAGATCCGGTGTCTACTCTGCCACAGGGC  
 CCCTGTCTACCTCTCTGGGCCCTCTTAGGTTGCCCTCAGCCCAAAGCCCCAGTCTCTGTCTTAAGCT  
 GCCCAGGGTCCCCTCTGGAAGCCAGCTCTAGGGCCACCAGGGTTTGAGGACTATGTGGAGCTGCCTCCA  
 AGTGTGAGCCAGGCAGCCACGTCCCCTCCAGGCCATCCTGCTCCTGTGGCAAGCAGCCACAGTGA  
 TCCAGGAGAGCCAGGGAGGAAGTGGGCCAGCATCCCCACATCCCGAAGGCCTCCTTGTCTTTCAGCA  
 GGTTGGGGACTACTGCTTCTCCTGGCCTGGACCTGGCTCCCTCTCACCACACAGTAAGCCACCTCT  
 CCAAGTCTGTGTTCTGAGACTGAGGACCTAGACCAGGACTTGTCTGTGAAAAAGTTTCCCTATCAACCTT  
 TGCCCCAGGCCCCAGCCATTCAGTTTTTCAAGTCCCTAAAGTAT

**ACGCGT**ACGCGGCCGCTCGAGCAGAACTCATCTCAGAAGAGGATCTGGCAGCAATGATATCCTGGATT  
 ACAAGGATGACGACGATAAGGTTTAA

Protein Sequence: >MR225402 representing NM\_007781  
 Red=Cloning site Green=Tags(s)

MDQQMALTWGLCYMALVALCWGHEVTEEEETVPLKLTLECYNDYTNRIICSWADTEDAQGLINMTLLYHQ  
 DKIQSVSCELSEKLMWSECPSSHRCVPRRCVIPYTRFSNGDNDYYSFQPDRDLGIQLMVPLAQHVQPPPP  
 KDIHISPSGDHFLLEWSVSLGDSQVSWLSKDIIEFEVAYKRLQDSWEDASSLHTSNFQVNLKPLFLPNS  
 IYAARVTRRLSAGSSLGRPSRWSPVHWDSPGDKAQPNLQCFDFGIQSLHCSWEVWTQTGVSFGL  
 FYRPSAAPEEKCSPPVKEPQASVYTRYRCSLPVPEPSAHSQYTVSVKHLEQGKFIMSYHYIQMEPPILN  
 QTKNRDSYSLHWETQKIPKYIDHTFQVQYKKKSESWKDKSTENLGRVNSMDLPQLEPDTSYCARVRVKPI  
 SDYDGIWSEWSNEYTWTTDWMPTLWIVLILVFLIFTLLLALHFGRVYGYRTRYRWKEKIPNPSKSLLFQ  
 DGGKGLWPPGMAAFATKNPALQGPQSRLLAEQQGVSYEHLEDNNVSPLETIEDPNIIRDPPSRPDTTPAA  
 SSESTEQLPNVQVEGPIPPSRPRKQLPSDFNGPYLPPQSHSLPDLPGQLGSPQVGGSLKALPGSLEY  
 MCLPPGGQVQLVPLSQVMGQQAQMDVQCGSSLETTGSPSVEPKENPPVELSVEKQEARNDPMTLPISGG  
 PEGSMASDYVTPGDPVLTLPSTSLGSLGLPSAQSPSLCKLPRVPSGSPALGPPGFEDYVELPP  
 SVSQAATSPPGHPAPPVASSPTVIPGEPREEVGPASPHPEGLLVLQQVGDYCFPLPGLPGSLSPHSPKPPS  
 PSLCSETEDLDQDLVSKKFPYQPLPQAPAIQFFKSLKY

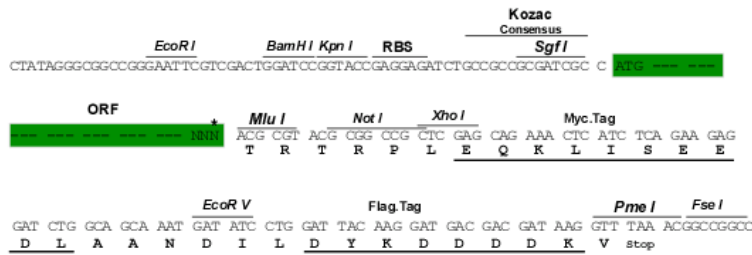
TRTRPLEQKLISEEDLAANDILDYKDDDDKV

Chromatograms: [https://cdn.origene.com/chromatograms/mm9094\\_c08.zip](https://cdn.origene.com/chromatograms/mm9094_c08.zip)

Restriction Sites: SgfI-MluI

Cloning Scheme:

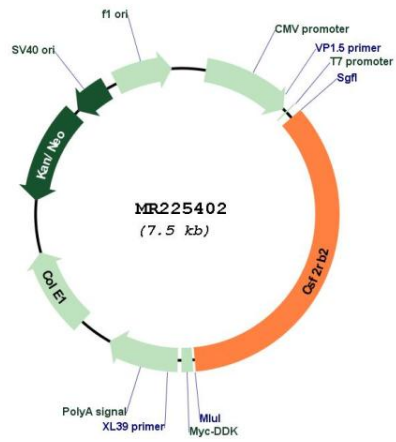
Cloning sites used for ORF Shuttling:



\* The last codon before the Stop codon of the ORF

<b>ACCN:</b>	NM_007781
<b>ORF Size:</b>	2634 bp
<b>OTI Disclaimer:</b>	The molecular sequence of this clone aligns with the gene accession number as a point of reference only. However, individual transcript sequences of the same gene can differ through naturally occurring variations (e.g. polymorphisms), each with its own valid existence. This clone is substantially in agreement with the reference, but a complete review of all prevailing variants is recommended prior to use. <a href="#">More info</a>
<b>OTI Annotation:</b>	This clone was engineered to express the complete ORF with an expression tag. Expression varies depending on the nature of the gene.
<b>Components:</b>	The ORF clone is ion-exchange column purified and shipped in a 2D barcoded Matrix tube containing 10ug of transfection-ready, dried plasmid DNA (reconstitute with 100 ul of water).
<b>Reconstitution Method:</b>	<ol style="list-style-type: none"><li>1. Centrifuge at 5,000xg for 5min.</li><li>2. Carefully open the tube and add 100ul of sterile water to dissolve the DNA.</li><li>3. Close the tube and incubate for 10 minutes at room temperature.</li><li>4. Briefly vortex the tube and then do a quick spin (less than 5000xg) to concentrate the liquid at the bottom.</li><li>5. Store the suspended plasmid at -20°C. The DNA is stable for at least one year from date of shipping when stored at -20°C.</li></ol>
<b>RefSeq:</b>	<a href="#">NM_007781.3</a> , <a href="#">NP_031807.1</a>
<b>RefSeq Size:</b>	4740 bp
<b>RefSeq ORF:</b>	2637 bp
<b>Locus ID:</b>	12984
<b>UniProt ID:</b>	<a href="#">P26954</a>
<b>Cytogenetics:</b>	15 37.22 cM
<b>MW:</b>	97.2 kDa
<b>Gene Summary:</b>	In mouse, there are two classes of high-affinity IL3 receptors. One contains this IL3-specific beta subunit and the other contains the beta subunit also shared by high-affinity IL5 and GM-CSF receptors.[UniProtKB/Swiss-Prot Function]

Product images:



Circular map for MR225402