

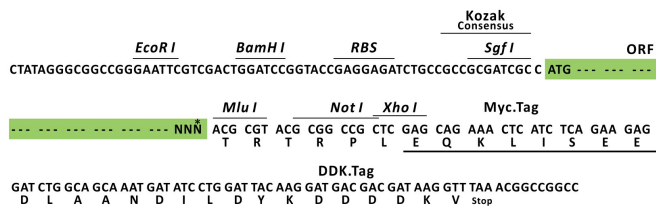
## Product datasheet for MR225338L1

### Suz12 (NM\_001163018) Mouse Tagged Lenti ORF Clone

#### Product data:

Product Type:	Expression Plasmids
Product Name:	Suz12 (NM_001163018) Mouse Tagged Lenti ORF Clone
Tag:	Myc-DDK
Symbol:	Suz12
Synonyms:	2610028O16Rik; AI195385; AU016842; AW536442; D11ErtD530; D11ErtD530e; mKIAA0160
Mammalian Cell Selection:	None
Vector:	pLenti-C-Myc-DDK (PS100064)
E. coli Selection:	Chloramphenicol (34 ug/mL)
ORF Nucleotide Sequence:	The ORF insert of this clone is exactly the same as(MR225338).
Restriction Sites:	SgfI-MluI
Cloning Scheme:	

Cloning sites used for ORF Shuttling:



\* The last codon before the Stop codon of the ORF.

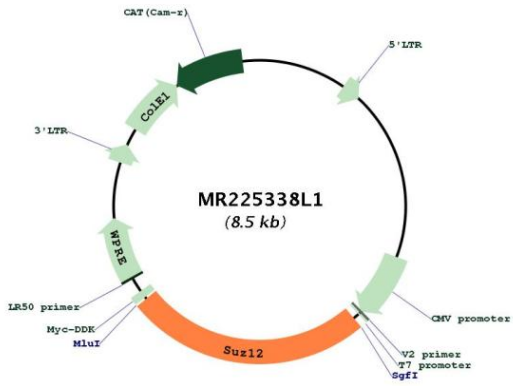
ACCN:	NM_001163018
ORF Size:	2157 bp



[View online >](#)

<b>OTI Disclaimer:</b>	<p>Due to the inherent nature of this plasmid, standard methods to replicate additional amounts of DNA in E. coli are highly likely to result in mutations and/or rearrangements. Therefore, OriGene does not guarantee the capability to replicate this plasmid DNA. Additional amounts of DNA can be purchased from OriGene with batch-specific, full-sequence verification at a reduced cost. Please contact our customer care team at <a href="mailto:custsupport@origene.com">custsupport@origene.com</a> or by calling 301.340.3188 option 3 for pricing and delivery.</p> <p>The molecular sequence of this clone aligns with the gene accession number as a point of reference only. However, individual transcript sequences of the same gene can differ through naturally occurring variations (e.g. polymorphisms), each with its own valid existence. This clone is substantially in agreement with the reference, but a complete review of all prevailing variants is recommended prior to use. <a href="#">More info</a></p>
<b>OTI Annotation:</b>	<p>This clone was engineered to express the complete ORF with an expression tag. Expression varies depending on the nature of the gene.</p>
<b>Components:</b>	<p>The ORF clone is ion-exchange column purified and shipped in a 2D barcoded Matrix tube containing 10ug of transfection-ready, dried plasmid DNA (reconstitute with 100 ul of water).</p>
<b>Reconstitution Method:</b>	<ol style="list-style-type: none"><li>1. Centrifuge at 5,000xg for 5min.</li><li>2. Carefully open the tube and add 100ul of sterile water to dissolve the DNA.</li><li>3. Close the tube and incubate for 10 minutes at room temperature.</li><li>4. Briefly vortex the tube and then do a quick spin (less than 5000xg) to concentrate the liquid at the bottom.</li><li>5. Store the suspended plasmid at -20°C. The DNA is stable for at least one year from date of shipping when stored at -20°C.</li></ol>
<b>RefSeq:</b>	<p><a href="#">NM_001163018.1</a>, <a href="#">NP_001156490.1</a></p>
<b>RefSeq Size:</b>	<p>4380 bp</p>
<b>RefSeq ORF:</b>	<p>2157 bp</p>
<b>Locus ID:</b>	<p>52615</p>
<b>UniProt ID:</b>	<p><a href="#">Q80U70</a></p>
<b>Cytogenetics:</b>	<p>11 47.36 cM</p>
<b>Gene Summary:</b>	<p>This gene encodes a core component of the polycomb repressive complex 2 (PRC2) that also includes, at least, embryonic ectoderm development protein (EED) and enhancer of zeste homolog 1 or 2 (EZH1 or EZH2). Through the methyltransferase activity of EZH1 or EZH2, the PRC2 complex methylates Lys9 and Lys27 of histone 3 and Lys26 of histone 1, leading to recruitment of the PRC1 complex, histone 2A ubiquitylation and transcriptional repression of the target genes. This gene product is essential for the activity and integrity of the PRC2 complex, and is required for X chromosome inactivation, stem cell maintenance and differentiation. Two transcript variants encoding different isoforms have been found for this gene. [provided by RefSeq, Jul 2009]</p>

Product images:



Circular map for MR225338L1