

Product datasheet for **MR225319**

Chrd (NM_009893) Mouse Tagged ORF Clone

Product data:

Product Type:	Expression Plasmids
Product Name:	Chrd (NM_009893) Mouse Tagged ORF Clone
Tag:	Myc-DDK
Symbol:	Chrd
Synonyms:	Chd
Mammalian Cell Selection:	Neomycin
Vector:	pCMV6-Entry (PS100001)
E. coli Selection:	Kanamycin (25 ug/mL)



[View online »](#)

ORF Nucleotide
Sequence:

>MR225319 representing NM_009893
 Red=Cloning site Blue=ORF Green=Tags(s)

TTTTGTAATACGACTCACTATAGGGCGGCCGGGAATTCGTCGACTGGATCCGGTACCGAGGAGATCTGCC
 GCCCGCATCGCC

ATGCCGAGCTCCCGGCCCGCCGGCCCGCGGCTGCTCCTCGGGCTGCTGCTGCTCGGCTCGCGGCCGG
 CCAGTGGCACTGGCCCTGAGCCCCAGCACTGCCCATCCGTTCCGAGAAGGAGCCGCTGCCTGTCCGGGG
 AGCGGCAGGCTGCTCCTTCGGCGGGAAGGTCTATGCCTTGGACGAGACGTGGCACCCGGACCTGGGGGAG
 CCTTTTGGGGTGTGCGCTGCGTGTGCGCCTGTGAAGCGCCTCAGTGGGCTCGCCGTGGGAGGGGTC
 CTGGCAGGGTCAGCTGCAAGAACATCAAACCTCAGTCCCCACCCTGGCCTGCAGGCAGCCGCGCCAGCT
 GCCAGGACACTGCTGCCAGACCTGCCCGCAGGAGCGCAGCAATCTAGATCCACAGCCCGCTGGCCTGGTC
 TTCGAGTATCCAAGGGATCCAGAGCATCGCAGTTACAGTATCGAGGGGAACCCGGCGTTGGGGAGCGGA
 CCCGTGCTGATGGCCACACAGACTTTGTGGCGCTGCTGACAGGACCGAGGTCGACGGCGGTAGCTCGTGC
 TCGAGTCTCTTTGCTGCGCTCAAGTTTACGCTTCTGTCTCCTACCAGCGGCTGGACCGTCCCAGCAGG
 GTTCGTTTACAGATCCCACAGGCAACATCCTGTTTGAACACCCTGCAACCCCCACCAGGATGGCCTGG
 TCTGTGGGGTGTGGCGGGCAGTGCCTCGGCTGTCTGTGAGGCTCCTGAGGGCAGAGCAGCTTCGGGTAGC
 CCTTGTGACATCCACTCACCTTCAGGAGAAGTCTGGGGGCTCTCATTGGCAGGGTGTCTCGCTGCA
 GAGACCTTCAGTGCCATCCTGACCCTGGAAGACCCTGCAGCGGGGTGTGGGGGCATAGCCCTGCTCA
 CCCTCAGTGACACAGAAGATTCTTGCATTTTTGCTGCTTCCGGGGTCTGCTGGGAGGACTAGCTCA
 GGCTCCCTTGAAGCTTCAGATTCTCCACAGGGACAGCTACTTCGGGAGCTCCAGGCCAACACCTCCGCT
 CAGGAGCCAGGTTTTGCTGAGGTGCTGCCAGCCTTACAGACCAAGAGATGGACTGGTTGGAGCTGGGG
 AGCTGCAGATGGTCTAGAGAAGCGGGTGGGCCAGAGCTACGCATCAGTGGATACATCACCACCAGGCA
 GAGCTGTGATGTCTTCAAAGTGTCTTTGTGGGGTGTGACCCTGATCCAGTCCAGACGGGTGTCTGCT
 GGGTCAGCCAGCTTCATATTGCTAGGAAATGGCTCCCTTATCTATCAGGTGCAAGTGGTAGGTACAGGTA
 GCGAGGTGGTGGCCATGACACTGGAGACCAAGCCTCAGCGGAAGAACCAGCGCACTGTCTGTGCCACAT
 GGCTGGACTCCAGCCGGGAGGACACATGGCTGTGGGTATGTGCTCTGGGCTGGGTGCCGAGGGGCTCAT
 ATGCTGTACAGAACGAGCTGTTCTGAATGTTGGTACCAAGGACTTCCCAGATGGAGAGCTTCGGGGGC
 ATGTGACTGCCATGCTACAGTGGGCACAGTGGCCGCTATGACAGATTGCCTGTGCCTCTGGCAGGGGC
 ACTAGTGTGCCCTGTGCGGAGTCAGGCAGCAGGGCACGCCTGGCTCTCCTTGGATACACATTGTAC
 TTACACTATGAAGTTCTATTGGCTGGGCTTGGTGGCTCAGAGCAAGGAAGTGCCTGCCCACCTCCTTG
 GGCTCCTGGGATGCCAGGGCCCCAGCGGCTGCTGAAGGGATTCTATGGCTCAGAGGCTCAGGGCGTGGT
 AAAAGATCTGGAGCTGTGCTGTGCGGCACCTGGCACAGGGCACTGCCTCCCTGCTCATACCACCAAG
 AGTAGCCCCAGAGGAGAACTACGTGGGCAGGTGCACATTGCCAGTCAGTGTGAGGCGGGAGGCTGCGTC
 TGGCCTCAGAAGGAGTGCAGATGCCCTTGGCTCCAAATGGAGAGGGCGGTACGTACCCATGCTGCCTGC
 TGGCCCTGGCCCTGAAGCCCCAGTACCAGCCAAACATGGCAGCCCTGGGAGACCCCGAGATCCTAACACA
 TGTTTCTTCGAGGGGCAGCAGCGGCCCCACGGGGCTCGCTGGGCACCCAACTATGACCCACTCTGCTCCC
 GGTGCAGGCACTGGACCAGTGTCTCCCGTGTGTCCAGAGAAACAACGCAGTAGAGACTCCCCAGCCCTA
 CCAAATCTGGAGCCAGGAGAGGGCTGCTATTTTGTGATGGTACCGGAGCTGGAGGGCAGCGGGTACCCGAT
 GGCACCCTGTTGTGCCCCCTTTGGCCTAATTAAGTGTGCTGTCTGCACCTGCAAGGGGGCCACGGGAGA
 GGTGCACTGTGAGAAGGTGCAGTGTCTCGCCTGGCCTGTGCTCAGCCTGTCCGTGCCAACCCACCGAC
 TGCTGCAAACAGTGTCCAGTAGGGTCAGGGACTAATGCCAAGCTGGGAGACCCCATGCAGGCTGATGGGC
 CTCGGGGTGTGCTTTGCTGGGCAGTGGTTCCAGAGAATCAGAGCTGGCACCCATCAGTGCCCCCTT
 TGGGGAGATGAGCTGTATTACCTGCAGATGTGGGCAGGGGTACCCACTGTGAGCGGGACGATTGTTCA
 CCGCCGCTATCCTGTGGCTCAGGGAAGGAGAGTCGATGCTGTTCCACTGCACAGCCAAAGTCTCTG
 AGACTAGAACCCTTCAGAGCTGGAGAAAGAAGCGGAGCACTCC

ACGCGTACGCGGCCGCTCGAGCAGAAACTCATCTCAGAAGAGGATCTGGCAGCAAATGATATCCTGGATT
 ACAAGGATGACGACGATAAGGTTTAA

Protein Sequence: >MR225319 representing NM_009893
 Red=Cloning site Green=Tags(s)

MPSLPAPPAPRLLLGLLLLGSRPASGTGPEPPALPIRSEKEPLPVRGAAGCSFGGKVVYALDETHWPDLGE
 PFGVMRCVLCACEAPQWARRGRGPGRVSCNKPQCPTLACRQPRQLPGHCCQTCPQERSNLDPQAGLV
 FEYPRDPEHRSYSDRGEVGERTRADGHTDFVALLTGPRSQAVARARVSLLRSSLRFVSVYQRLDRPSR
 VRFDTPTGNILFEHPATPTQDGLVCGVWRAVPRLSVRLRLRAEQLRVALVSTHPSGEVWGPLIWQALAA
 ETFSAILTLEDPLQRGVGGIALLLSDTEDSLHFLLLFRGLLGGLAQAPLKLQILHQGQLLRELQANTSA
 QEPGFAEVLPSLTDQEMDWLELGELQMVLEKAGGPELRIISGYITTRQSCDVLQSVLFCGADALIPVQTGAA
 GSASFILLGNGLIYQVQVVGTSSEVAMTLETKPQRKNQRTVLCHMAGLQPGGHMAVGMCSGLGARGAH
 MLLQNELFLNVGTDKDFPDGELRGHVTALCYSGHSARYDRLPVPLAGALVLPVRSQAAGHAWLSLDTHCH
 LHYEVLLAGLGGSEQGTVAHLLGPPGMPGPQRLLKGFYGEAQGVVKDLEPVLLRHLAQGTASLLITTK
 SSPRGELRGQVHIASQCEAGGLRLASEGVQMP LAPNGEAAATSPMLPAGPGPEAPVPAKHGSPGRPRDPNT
 CFFEGQQRPHGARWAPNYDPLCSLCICQRRTVICDPVVCPPPSCPHPVQALDQCCPVCPEKQRSRDPLSL
 PNLEPGEQYFDGDRSWRAAGTRWHPVPPFGLIKCAVCTCKGATGEVHCEKVQCPRLACAQPVVRANPTD
 CCKQCPVSGTNAKLGDPMQADGPRGCRFAGQWFPENQSWHPSVPPFGEMSCITCRCGAGVPHCERDDCS
 PPLSCGSGKESRCCSHCTAQRSSERTLPELEKEAEHS

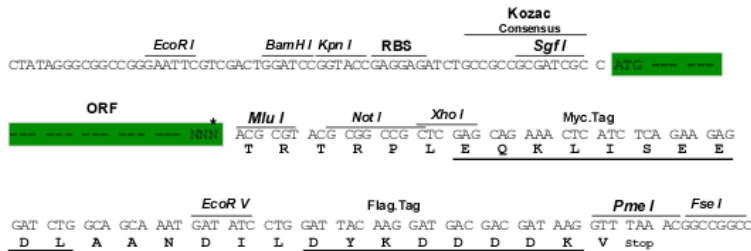
TRTRPLEQKLISEEDLAANDILDYKDDDDKV

Chromatograms: https://cdn.origene.com/chromatograms/mm9007_h01.zip

Restriction Sites: SgfI-MluI

Cloning Scheme:

Cloning sites used for ORF Shuttling:



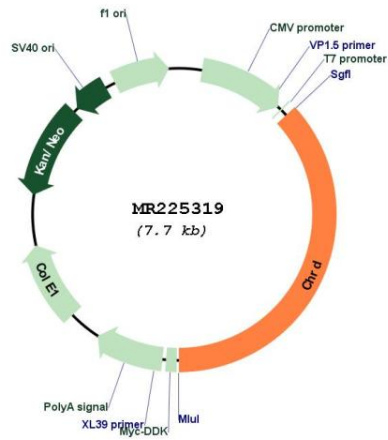
* The last codon before the Stop codon of the ORF

ACCN: NM_009893

ORF Size: 2844 bp

OTI Disclaimer:	The molecular sequence of this clone aligns with the gene accession number as a point of reference only. However, individual transcript sequences of the same gene can differ through naturally occurring variations (e.g. polymorphisms), each with its own valid existence. This clone is substantially in agreement with the reference, but a complete review of all prevailing variants is recommended prior to use. More info
OTI Annotation:	This clone was engineered to express the complete ORF with an expression tag. Expression varies depending on the nature of the gene.
Components:	The ORF clone is ion-exchange column purified and shipped in a 2D barcoded Matrix tube containing 10ug of transfection-ready, dried plasmid DNA (reconstitute with 100 ul of water).
Reconstitution Method:	<ol style="list-style-type: none">1. Centrifuge at 5,000xg for 5min.2. Carefully open the tube and add 100ul of sterile water to dissolve the DNA.3. Close the tube and incubate for 10 minutes at room temperature.4. Briefly vortex the tube and then do a quick spin (less than 5000xg) to concentrate the liquid at the bottom.5. Store the suspended plasmid at -20°C. The DNA is stable for at least one year from date of shipping when stored at -20°C.
RefSeq:	NM_009893.2 , NP_034023.1
RefSeq Size:	3292 bp
RefSeq ORF:	2847 bp
Locus ID:	12667
UniProt ID:	Q9Z0E2
Cytogenetics:	16 12.51 cM
MW:	102 kDa
Gene Summary:	Dorsalizing factor. Key developmental protein that dorsalizes early vertebrate embryonic tissues by binding to ventralizing TGF-beta family bone morphogenetic proteins (BMPs) and sequestering them in latent complexes.[UniProtKB/Swiss-Prot Function]

Product images:



Circular map for MR225319