

Product datasheet for **MR225315**

Syn2 (NM_013681) Mouse Tagged ORF Clone

Product data:

Product Type:	Expression Plasmids
Product Name:	Syn2 (NM_013681) Mouse Tagged ORF Clone
Tag:	Myc-DDK
Symbol:	Syn2
Synonyms:	2900074L19Rik; AI836018; AI841723
Mammalian Cell Selection:	Neomycin
Vector:	pCMV6-Entry (PS100001)
E. coli Selection:	Kanamycin (25 ug/mL)



[View online »](#)

ORF Nucleotide Sequence:

>MR225315 representing NM_013681
 Red=Cloning site Blue=ORF Green=Tags(s)

TTTTGTAATACGACTCACTATAGGGCGGCCGGAATTCGTCGACTGGATCCGGTACCGAGGAGATCTGCC
 GCC**GCGATCGCC**

ATGATGAACCTCCTGAGGCGCCGCTGTCGGACAGCAGCTTCATCGCCAACCTGCCAATGGCTACATGA
 CTGACCTTCAGCGCCCGAGCCGAGCAGCCCTCCTGCCCTGGCCCCGGTGCCTACGGCGTCGGC
 GGCCACCTCAGCTGCCTCGCCCGTCCCAGCGCAGGCCGCCACCCGCCAGGCACCCGCCCGCAGCCG
 GCGCCGACGCCGCGCCGACCGCTCGGTGGGACGAGCTTCTCAGCTCGCTGTCGCAAGCGGTGAAGC
 AGACGGCCGCTCCGCCGCTGGTGGACGCGCCGCACCTTCGGCCGCTCCAGGAAGGCCAAGGTGCT
 GCTGGTGGTCGACGAGCCGCACCCGACTGGGCCAAATGCTTTCGGGGCAAAAAATCCTTGAGATTAT
 GACATCAAGGTGGAACAGGCAGAATTCAGAGCTTAACCTGGTGGCCATGCAGATGGAACCTACGCCG
 TGGACATGCAGGTAATTCGGAATGGCACAAGGTTGTCGGTCTTCAGACCAGACTTTGTGCTCATCCG
 ACAGCATGCATTTGGCATGGCAGAGAATGAAGACTTCCGCCACCTGGTCATTGGCATGCAGTACGCAGGC
 CTCGCCAGCATCAACTCTGGAGTCTATTTACAACCTTCTGTGACAAGCGTGGGTGTTTGTCTCAGATGG
 TGGCCATCTTCAAGACTGGGAGGGGAGAAATCCCACCTATTGAGCAGACATACTACCCCAATCACCG
 AGAGATGCTTACGCTTCTACGTTCCCTGTGGTGGTGAAGATTGGCCATGCTCACTCAGGCATGGGCAAG
 GTCAAAGTGGAAAATCACTACGACTCCAGGACATTGCCAGTGTGGTGGCCCTCACCCAACTTATGCCA
 CGGCAGAACCTTTCATCGACGCCAAGTATGACATCCGAGTTCAGAAGATTGGCAACAACAAGGCCTA
 CATGAGGACATCCATCTCAGGAACTGGAAGACAAACTGGCTCGGCGATGCTGGAGCAAATGCCATG
 TCGGACCGGTACAAGCTCTGGGTAGATGCCTGCTCTGAAATGTTGGTGGCTGGACATCTGTGCAGTCA
 AAGCCGTGCATGGCAAAGATGGCAAAGACTACATTTTGGAGTCATGGACTGCAGATGCCATTGATTGG
 GGAACACCAAGTGGAGGACAGACAACCTCACTGATCTAGTCATCAGCAAGATGAACCAGCTATTGTCC
 AGGACTCCTGCCCTGTCTCCACAGAGACCTTTAACACCCAACAGCCACAGAGTGAACACTTAAGGAAC
 CGGACTCCAGCAAGACCCTCCTCAGCGGCCACCTCCCAAGGTTGTTTACAGTATATTCTCGACTGTAA
 TGGCATTGCAGTAGGTCCAAAACAAGTCCAAGCTTCT

ACGCGTACGCGGCCGCTCGAGCAGAACTCATCTCAGAAGAGGATCTGGCAGCAAATGATATCTGGATT
 ACAAGGATGACGACGATAAGGTTTAA

Protein Sequence:

>MR225315 representing NM_013681
 Red=Cloning site Green=Tags(s)

MMNFLRRRLSDSSFIANLPNGYMTDLQRPEPQQPPAPGPGAATASAATSAAASPGPERRPPPAQAPAPQP
 APQPAPTPSVGSSFFSSLSQAVKQTAASAGLVDAPAPSAASRKAKVLLVDEPHTDWAKCFRGKKILGDY
 DIKVEQAEFSELNLVAHADGTYAVDMQVLRNGTKVVRSFRPDFVLIRQHAFGMAENEDFRHLVIGMQYAG
 LPSINSLESIYNFCDKPWVFAQMVVAIFKTLGGEKFLIEQTYYPNHREMLTLPFPVVVKIGHAHSGMGK
 VKVENHYDFQDIASVVALTQTYATAEFPIDAKYDIRVQKIGNNYKAYMRTSISGNWKTNTGSAMLEQIAM
 SDRYKLVWDACSEMFGGLDICA VKAVHGKDGKDYIFEVMDCSMPLIGEHQVEDRQLITDLVISKMNQLLS
 RTPALSPQRPLTTQQPQSGTLKEPDSSKTPPQRPPQGLQYILDNCNGIAGPKQVQAS

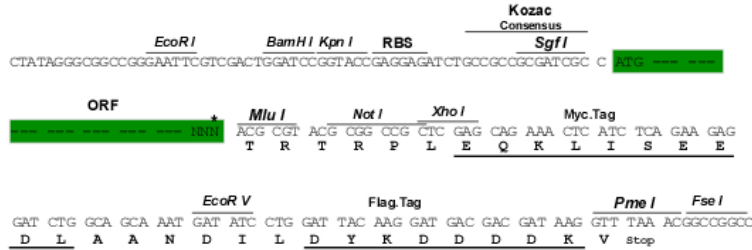
TRTRPLEQKLISEEDLAANDILDYKDDDDKV

Restriction Sites:

SgfI-MluI

Cloning Scheme:

Cloning sites used for ORF Shutting:



* The last codon before the Stop codon of the ORF

ACCN: NM_013681

ORF Size: 1437 bp

OTI Disclaimer: The molecular sequence of this clone aligns with the gene accession number as a point of reference only. However, individual transcript sequences of the same gene can differ through naturally occurring variations (e.g. polymorphisms), each with its own valid existence. This clone is substantially in agreement with the reference, but a complete review of all prevailing variants is recommended prior to use. [More info](#)

OTI Annotation: This clone was engineered to express the complete ORF with an expression tag. Expression varies depending on the nature of the gene.

Components: The ORF clone is ion-exchange column purified and shipped in a 2D barcoded Matrix tube containing 10ug of transfection-ready, dried plasmid DNA (reconstitute with 100 ul of water).

Reconstitution Method:

1. Centrifuge at 5,000xg for 5min.
2. Carefully open the tube and add 100ul of sterile water to dissolve the DNA.
3. Close the tube and incubate for 10 minutes at room temperature.
4. Briefly vortex the tube and then do a quick spin (less than 5000xg) to concentrate the liquid at the bottom.
5. Store the suspended plasmid at -20°C. The DNA is stable for at least one year from date of shipping when stored at -20°C.

RefSeq: [NM_013681.3](#), [NP_038709.1](#)
RefSeq Size: 3870 bp

RefSeq ORF: 1440 bp

Locus ID: 20965

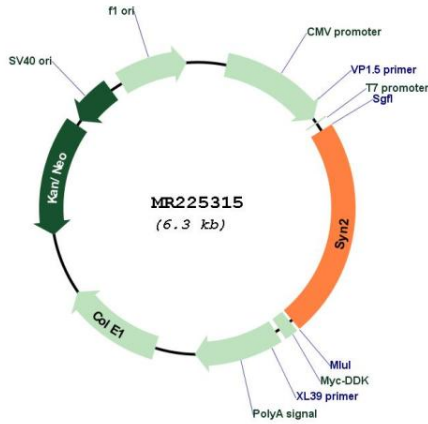
UniProt ID: [Q64332](#)

Cytogenetics: 6 53.2 cM

MW: 52.9 kDa

Gene Summary: Neuronal phosphoprotein that coats synaptic vesicles, binds to the cytoskeleton, and is believed to function in the regulation of neurotransmitter release. May play a role in noradrenaline secretion by sympathetic neurons.[UniProtKB/Swiss-Prot Function]

Product images:



Circular map for MR225315