

Product datasheet for MR225285L2

Adam12 (NM_007400) Mouse Tagged Lenti ORF Clone

Product data:

Product Type:	Expression Plasmids
Product Name:	Adam12 (NM_007400) Mouse Tagged Lenti ORF Clone
Tag:	mGFP
Symbol:	Adam12
Synonyms:	ADAM; MI; Mltna
Mammalian Cell Selection:	None
Vector:	pLenti-C-mGFP (PS100071)
E. coli Selection:	Chloramphenicol (34 ug/mL)
ORF Nucleotide Sequence:	The ORF insert of this clone is exactly the same as(MR225285).
Restriction Sites:	SgfI-MluI
Cloning Scheme:	

Cloning sites used for ORF Shuttling:



* The last codon before the Stop codon of the ORF.

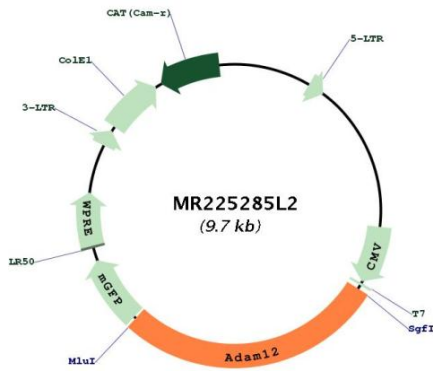
ACCN:	NM_007400
ORF Size:	2709 bp



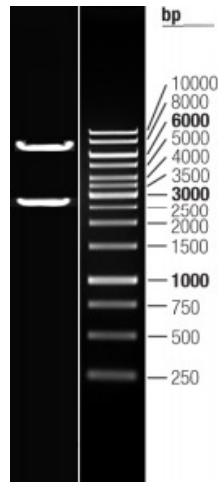
[View online »](#)

OTI Disclaimer:	The molecular sequence of this clone aligns with the gene accession number as a point of reference only. However, individual transcript sequences of the same gene can differ through naturally occurring variations (e.g. polymorphisms), each with its own valid existence. This clone is substantially in agreement with the reference, but a complete review of all prevailing variants is recommended prior to use. More info
OTI Annotation:	This clone was engineered to express the complete ORF with an expression tag. Expression varies depending on the nature of the gene.
Components:	The ORF clone is ion-exchange column purified and shipped in a 2D barcoded Matrix tube containing 10ug of transfection-ready, dried plasmid DNA (reconstitute with 100 ul of water).
Reconstitution Method:	<ol style="list-style-type: none">1. Centrifuge at 5,000xg for 5min.2. Carefully open the tube and add 100ul of sterile water to dissolve the DNA.3. Close the tube and incubate for 10 minutes at room temperature.4. Briefly vortex the tube and then do a quick spin (less than 5000xg) to concentrate the liquid at the bottom.5. Store the suspended plasmid at -20°C. The DNA is stable for at least one year from date of shipping when stored at -20°C.
RefSeq:	NM_007400.2 , NP_031426.2
RefSeq Size:	7675 bp
RefSeq ORF:	2712 bp
Locus ID:	11489
UniProt ID:	Q61824
Cytogenetics:	7 F3
Gene Summary:	This gene encodes a member of a disintegrin and metalloprotease (ADAM) family of endoproteases that play important roles in various biological processes including cell signaling, adhesion and migration. The encoded preproprotein undergoes proteolytic processing to generate a mature, functional protein that localizes to the cell surface. About a third of the mice lacking the encoded protein die before weaning. Overexpression of the encoded protein in a mouse model of Duchenne muscular dystrophy alleviates the muscle pathology by preventing cell necrosis and inflammation. [provided by RefSeq, May 2016]

Product images:



Circular map for MR225285L2



Double digestion of MR225285L2 using SgfI and MluI