

Product datasheet for MR225256L2

Neurod2 (NM_010895) Mouse Tagged Lenti ORF Clone

Product data:

Product Type:	Expression Plasmids
Product Name:	Neurod2 (NM_010895) Mouse Tagged Lenti ORF Clone
Tag:	mGFP
Symbol:	Neurod2
Synonyms:	bHLHa1; Ndrf
Mammalian Cell Selection:	None
Vector:	pLenti-C-mGFP (PS100071)
E. coli Selection:	Chloramphenicol (34 ug/mL)
ORF Nucleotide Sequence:	The ORF insert of this clone is exactly the same as(MR225256).
Restriction Sites:	SgfI-MluI
Cloning Scheme:	

Cloning sites used for ORF Shuttling:



* The last codon before the Stop codon of the ORF.

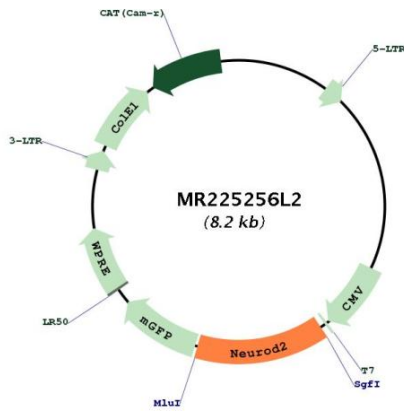
ACCN:	NM_010895
ORF Size:	1149 bp



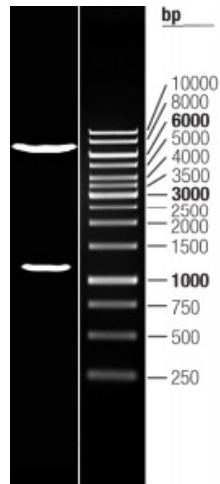
[View online »](#)

OTI Disclaimer:	<p>Due to the inherent nature of this plasmid, standard methods to replicate additional amounts of DNA in E. coli are highly likely to result in mutations and/or rearrangements. Therefore, OriGene does not guarantee the capability to replicate this plasmid DNA. Additional amounts of DNA can be purchased from OriGene with batch-specific, full-sequence verification at a reduced cost. Please contact our customer care team at custsupport@origene.com or by calling 301.340.3188 option 3 for pricing and delivery.</p> <p>The molecular sequence of this clone aligns with the gene accession number as a point of reference only. However, individual transcript sequences of the same gene can differ through naturally occurring variations (e.g. polymorphisms), each with its own valid existence. This clone is substantially in agreement with the reference, but a complete review of all prevailing variants is recommended prior to use. More info</p>
OTI Annotation:	<p>This clone was engineered to express the complete ORF with an expression tag. Expression varies depending on the nature of the gene.</p>
Components:	<p>The ORF clone is ion-exchange column purified and shipped in a 2D barcoded Matrix tube containing 10ug of transfection-ready, dried plasmid DNA (reconstitute with 100 ul of water).</p>
Reconstitution Method:	<ol style="list-style-type: none"> 1. Centrifuge at 5,000xg for 5min. 2. Carefully open the tube and add 100ul of sterile water to dissolve the DNA. 3. Close the tube and incubate for 10 minutes at room temperature. 4. Briefly vortex the tube and then do a quick spin (less than 5000xg) to concentrate the liquid at the bottom. 5. Store the suspended plasmid at -20°C. The DNA is stable for at least one year from date of shipping when stored at -20°C.
RefSeq:	<p>NM_010895.3, NP_035025.3</p>
RefSeq Size:	<p>3137 bp</p>
RefSeq ORF:	<p>1152 bp</p>
Locus ID:	<p>18013</p>
UniProt ID:	<p>Q62414</p>
Cytogenetics:	<p>11 61.75 cM</p>
Gene Summary:	<p>Transcriptional regulator implicated in neuronal determination. Mediates calcium-dependent transcription activation by binding to E box-containing promoter. Critical factor essential for the repression of the genetic program for neuronal differentiation; prevents the formation of synaptic vesicle clustering at active zone to the presynaptic membrane in postmitotic neurons. Induces transcription of ZEB1, which in turn represses neuronal differentiation by down-regulating REST expression. Plays a role in the establishment and maturation of thalamocortical connections; involved in the segregation of thalamic afferents into distinct barrel domains within layer VI of the somatosensory cortex. Involved in the development of the cerebellar and hippocampal granular neurons, neurons in the basolateral nucleus of amygdala and the hypothalamic-pituitary axis. Associates with chromatin to the DPYSL3 E box-containing promoter.[UniProtKB/Swiss-Prot Function]</p>

Product images:



Circular map for MR225256L2



Double digestion of MR225256L2 using SgfI and MluI