

## Product datasheet for MR225188

### Sh3gl1 (NM\_013664) Mouse Tagged ORF Clone

#### Product data:

Product Type:	Expression Plasmids
Product Name:	Sh3gl1 (NM_013664) Mouse Tagged ORF Clone
Tag:	Myc-DDK
Symbol:	Sh3gl1
Synonyms:	C77078; EEN; Sh3d2b; SH3P8
Mammalian Cell Selection:	Neomycin
Vector:	pCMV6-Entry (PS100001)
E. coli Selection:	Kanamycin (25 ug/mL)
ORF Nucleotide Sequence:	>MR225188 ORF sequence Red=Cloning site Blue=ORF Green=Tags(s)

TTTTGTAATACGACTCACTATAGGGCGGCCGGAATTCGTCGACTGGATCCGGTACCGAGGAGATCTGCC  
GCC**CGATCGCC**

ATGTCGGTGGCGGGGCTGAAGAAGCAGTTCTACAAGGCGAGCCAGCTGGTCAGCGAGAAGGTTGGTGGG  
CCGAAGGGACAACTGGATGATGACTTTAAAGATATGGAAAAGAAGGTGGATGTCACCAGCAAGGCCGT  
GGCAGAGGTGCTGGTCAGAACCATAGAATATCTGCAGCCTAACCCAGCCTCGAGAGCCAAGCTGACTATG  
CTGAACACCGTATCCAAGATCCGGGGCCAAGTGAAGAACCCTGGTACCCACAGTCAGAGGGTCTGTTGG  
GAGAGTGCATGGTTCGCCATGGCAAGGAACTAGGTGGAGAGTCCAACCTTCGGTGTGCCCTGCTAGATGC  
AGGTGAGTCCATGAAGCGCCTGGCTGAGGTGAAGGACTCACTGGACATCGAGGTCAAGCAGAACTTCATT  
GACCCACTACAGAACCTGTGTGACAAGGATCTGAAGGAGATCCAGCACCCCTGAAGAAATTGGAGGGCC  
GCCGCCTTGACTTTGACTACAAGAAGAAGCGCCAGGGCAAGATCCCCGATGAGGAGCTGCGCCAGGCCCT  
AGAGAAGTTCGAGGAGTCCAAGGAGGTGGCGGAGACCAGTATGCACAACCTCCTGGAGACTGATATAGAG  
CAGGTGAGCCAGCTCTCGGCCCTGGTGGATGCCAGCTGGACTACCACGGCAGGCAGTGCAGATCCTGG  
AGGAGCTGGCTGACAAGCTGAAGCGCAGGGTTCGGGAAGCCTCCTCACGCCCCAAGCGGGAGTTCAAGCC  
CCGGCCCCGGGAGCCCTTTGAGCTTGGAGAGCTGGAGCAGCCCAATGGGGGATTTCCCTGTGCCCCAGCA  
CCTAAGATCACAGCCTCCTCATATTTAGATCGTCAGACAAGCCATCAGGATGCCAGCAAGAGCATGC  
CACCCCTGGACCAGCCAAGCTGCAAGGCCCTTTATGATTTTGGAGCCAGAGAATGATGGCGAGCTGGGCTT  
CCGTGAGGGGACCTCATCACGCTTACCAACCAGATCGACGAGAAGTGGTATGAGGGGATGCTGCACGGC  
CAATCAGGCTTCTCCACTCAGCTACGTGCAGGTGCTGGTGCCTCTGCCTCAG

**ACGCGT**ACGCGGCCGCTCGAGCAGAACTCATCTCAGAAGAGGATCTGGCAGCAATGATATCCTGGATT  
ACAAGGATGACGACGATAAGGTTTAA



[View online »](#)

**Protein Sequence:** >MR225188 protein sequence  
 Red=Cloning site Green=Tags(s)

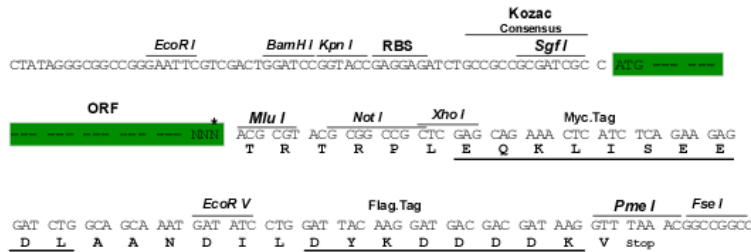
MSVAGLKKQFYKASQLVSEKVGGAEGTKLDDDFKMEKKVDVTSKAVAEVLVRTIEYLQPNPASRAKLTMLNTVSKIRGQVKNPGYQSEGLLGECMVRHGKELGGESNFGDALLDAGESMKRLAEVKDSL DIEVKQNFIDPLQNLCDKDLKEIQHHLKKLEGRRLDFDYKKRQGGKIPDEELRQALEKFESKEVAETSMMHNLLETDIEQVSQLSALVDAQLDYHRQAVQIILEELADKLKRRVREASSRPKREFKPRPREPFELGELEQPNGGFPCAPAPKII TASSFRSSDKPIRMPSPKSMPPLDQPSCKALYDFEPENDGELGFREGDLITLTNQIDENWYEGMLHGQSGFFPLSYVQVLVPLPQ

TRTRPLEQKLISEEDLAANDILDYKDDDDKV

**Restriction Sites:** SgfI-MluI

**Cloning Scheme:**

Cloning sites used for ORF Shuttling:



\* The last codon before the Stop codon of the ORF

**ACCN:** NM\_013664

**ORF Size:** 1107 bp

**OTI Disclaimer:** The molecular sequence of this clone aligns with the gene accession number as a point of reference only. However, individual transcript sequences of the same gene can differ through naturally occurring variations (e.g. polymorphisms), each with its own valid existence. This clone is substantially in agreement with the reference, but a complete review of all prevailing variants is recommended prior to use. [More info](#)

**OTI Annotation:** This clone was engineered to express the complete ORF with an expression tag. Expression varies depending on the nature of the gene.

**Components:** The ORF clone is ion-exchange column purified and shipped in a 2D barcoded Matrix tube containing 10ug of transfection-ready, dried plasmid DNA (reconstitute with 100 ul of water).

**Reconstitution Method:**

1. Centrifuge at 5,000xg for 5min.
2. Carefully open the tube and add 100ul of sterile water to dissolve the DNA.
3. Close the tube and incubate for 10 minutes at room temperature.
4. Briefly vortex the tube and then do a quick spin (less than 5000xg) to concentrate the liquid at the bottom.
5. Store the suspended plasmid at -20°C. The DNA is stable for at least one year from date of shipping when stored at -20°C.

**RefSeq:** [NM\\_013664.3](#), [NP\\_038692.1](#)

**RefSeq Size:** 2089 bp

**RefSeq ORF:** 1107 bp

**Locus ID:** 20405

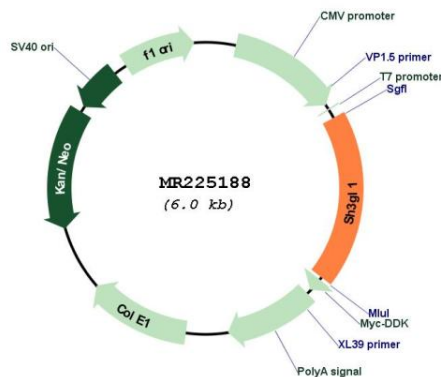
**UniProt ID:** [Q62419](#)

**Cytogenetics:** 17 29.11 cM

**MW:** 41.5 kDa

**Gene Summary:** Implicated in endocytosis. May recruit other proteins to membranes with high curvature (By similarity).[UniProtKB/Swiss-Prot Function]

## Product images:



Circular map for MR225188