

Product datasheet for **MR225181**

Gpr149 (NM_177346) Mouse Tagged ORF Clone

Product data:

Product Type:	Expression Plasmids
Product Name:	Gpr149 (NM_177346) Mouse Tagged ORF Clone
Tag:	Myc-DDK
Symbol:	Gpr149
Synonyms:	9630018L10Rik; Ieda; PGR10; R35
Mammalian Cell Selection:	Neomycin
Vector:	pCMV6-Entry (PS100001)
E. coli Selection:	Kanamycin (25 ug/mL)



[View online »](#)

ORF Nucleotide Sequence:

>MR225181 representing NM_177346
 Red=Cloning site Blue=ORF Green=Tags(s)

TTTTGTAATACGACTCACTATAGGGCGGCCGGAATTCGTCGACTGGATCCGGTACCGAGGAGATCTGCC
 GCC**CGGATCGCC**

ATGTCTTTCTTTCTCAGCAACTTAACAAATGACTCTAACCTGTGAAAGCAAGTCATAATTCTACGGAGA
 CGGACCTTATGAATTCACCAGCAACTCTGACTCTTTCTCTTTTTGCCTGATCTGTATAATGACTCTCGC
 AGCTCTGGTGGGAGCATTCTTCTCACTGGTTTCGCTGCTGACCATGCAATACAGAAGTGTCTTGTCCATA
 CTTGTGACATCTTGGTCTGTGGATGATCTCTTGTAGCGTCTTGTCCGTGGCCATCTTCATGGTTTTACAGT
 GGCCAAAAGAGGCACAGGGCTACTTCCAGTCTCTGTGCACCACCTCTGCCCTACTGTATATGTGCCAGGG
 CCTCTCCAGCAACTTGAAGGCGACTCTCATAGTCTGTACAACCTTTTATACGATGAACAGGACGGTGGAG
 AGTCAGTCAAGCTCCTGGCGATTAGGACAGGACTTGGTGTGACTTTAACCGTTTGGGCAGTCAGCCTGC
 TGCTGGCTTCGCTCCCGCTCTGTGGCTGGGGTGTCTTCGTGCGCACGCCCTGGGGCTGCCTGACCGACTG
 CTCAGCCATACGTGCTGCTCCTCTTCGCGGTATACGCTTCCGCTTTCGGGCTCCTGGCGTTCTCTCT
 GTCCTCTCACTACCAGCTGCTGTGTTCCGAGGAACCGCTGAGACTCCATGCCAACTACCAGGAAATTT
 CTCGTGGCGCCTCTACTCCTGGGACCCCTGCTGCTGCGGGAAGAGTGCTCTGTCTGCCGCCAGAGGATGT
 TGAGATCCCTGCTCTGCGATGCACTGGGGGATGCTCCCGAGCTCCGACGTGGTGTGTGCCCGGGTCAG
 CCGGCTGCCTCCGGCGCTGGAGCCGGCAGGCGAGAGAATCCCGGGACTCCCAGGGCACCACAGCTTCC
 CCTTGAGCTTGGCACAGAAGCGCTTTTCTTTGATTCTAGCGTGACGAAAGTCATCTTTGGCTACCCAT
 GATGATCCACATGGTGGTAAAACACGTGGTGGGGTTTTCAGAGCCTTCCGGTCGATATGCTCAGCTTTCTA
 CTAAGCCTGCTGGCCAGCAGTGTAAACACAGTGTGGTGTCTTATCCAAACGTTGGGCCACTTGCCTTGTG
 GCTTCATCACTCACTGCCAGCCAGACACTACTCCGTTGCCTTCGATGGGAAAAAGTCGAAGAGGAAAGG
 CTTTGAATTCAATCTATCATTCCAACAAAGTTATGGACTCTATAAAATACCACATGCAGATTGCTATGAT
 GATGATGAAAATTCATATCCTATCACAACCCAAAGAATTATGAGTGTGAAGCTACAAAGGAGCCTTGGG
 GAGACAACCGCAGTGTCTTCAATACCATCACAGTAGAAATCAGCACCCAGCCACCCTGGACAGGCCAC
 ACTGACGGGTGTCCACAAGTGTACCAATACTGACATCCCAGAATCCAAACAGGCCATGAAAGAGGAAAAG
 GGTGCTTTTTCTGTTAAAACAGAAAGCGATATTAATACTATGGAGAAACCACCTCTTTTGAAGGTCCAGAGA
 GACGACTGTCCCATGAGGAGAATCAGAAACCAGATCTTTCAGACTGGGAATGGTGCAGGAGTAAGTCTGA
 ACGAACGCCTCGCCAGCGTTCGGTGGTGGGCTGGCTATCCCATATGCGCGTTCAGGGGACTGTGTCT
 CTCGAAGCACCTACTGGGAAAACGCTCTCTCTTCTACTTATGAGGTCAGCGCAGAAGGGCAAAAGATAA
 CCCAGCCTCTAAGAAAATAGAAGTCTATCGATCTAAAAGTGTGGCCATGAACCGAACTCAGAGGAGTC
 TCCTCCACGTTTGGGACACCAGTGTAAAATACACTTGGAAAGTCTTGAATTTGTGACAACGATGAG
 GCTCTAGACACTGTGTAATTATCAGCAACATCAGCCAATCCTCCACAAAAGTCAGGTCTCCTTCTCTGC
 GCTACTCACGGAAGGAAAACAGATTCTGCTCCTGCGACTTAGGAGAAACTGCCTCATACTCGCTCTTTT
 ACCCAAGTGTCTGATGGTGTATTAACATCTCTATCCCTGACACGGTGGAGGCCACAGACAGAAC
 AGCAGGCGGCAGCATGAAGAGAGGGATGGCTACCAGGAAGAGATCCAGTTGTTAAACAAAGCCTACAGGA
 AAAGAGAGGCAGAAAGCAAGGGTAT

ACGCGTACGCGGCCGCTCGAGCAGAACTCATCTCAGAAGAGGATCTGGCAGCAAATGATATCCTGGATT
 ACAAGGATGACGACGATAAGGTTTAA

Protein Sequence: >MR225181 representing NM_177346
 Red=Cloning site Green=Tags(s)

MSFFLSNLTNDSNLWKASHNSTETDLMNSPATLTLSLFCLICIMTLAALVGSIFSLVSLLTMOYRTVLSI
 LVTSWSVDDLLSVLSVAIFMVLQWPKEAQGYFQSLCTTSALLYMCQGLSSNLKATLIVCYNFYTMNRTVE
 SQSSSWRLGQVLGVTLTVWAVSLLLASLPLCGWGVFVRTPWGCLDCSSPYVLLLFAYVASAFGLLAVLS
 VPLTHQLLCSEEPRLRHANYQEISRGASTPGTPAAAGRVLCLPPEDVEIPALRCTGGCSPSSDVVFAPGQ
 PAASGAGAGRRENPGTPQGTNSFPLSLAQKRFSLILALTKVILWLPMMIHMVVKHVVGFSQSLPVDMLSFL
 LSLASSVTPVFVLSKRWAHLPCGCIINCQPDITYSAFDGKSKRKGFEFNLFSQQSYGLYKIPHADCYD
 DDENSISYHNPKNYECEATKEPWGDNRSVFNTITVEISTTPPLDSATLTGVHKCTNDIPESKQAMKEEK
 GAFSVKTESDINYGETTSFEGPERRLSHEENQKPDLSDEWECRSKERTPRQRSGGGLAIPICAFQGTVS
 LQAPTGKTLSTYEVSAEQKITPASKKIEVYRSKSVGHEPNSEESPSTFADTSVKIHLEVLICDNDE
 ALDVTVSIISNISQSSTKVRSPSLRYSRKENRFVSCDLGETASYSLFLPTSDPDGDINISIPDTVEAHRQN
 SRRQHEERDGYQEELQLLNKAYRKREAESKGD

TRTRPLEQKLISEEDLAANDILDYKDDDDKV

Chromatograms: https://cdn.origene.com/chromatograms/ja1790_a09.zip

Restriction Sites: Sgfl-MluI

Cloning Scheme:

Cloning sites used for ORF Shuttling:



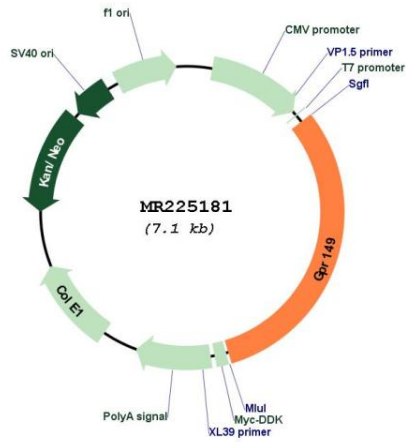
* The last codon before the Stop codon of the ORF

ACCN: NM_177346

ORF Size: 2196 bp

OTI Disclaimer:	<p>Due to the inherent nature of this plasmid, standard methods to replicate additional amounts of DNA in E. coli are highly likely to result in mutations and/or rearrangements. Therefore, OriGene does not guarantee the capability to replicate this plasmid DNA. Additional amounts of DNA can be purchased from OriGene with batch-specific, full-sequence verification at a reduced cost. Please contact our customer care team at custsupport@origene.com or by calling 301.340.3188 option 3 for pricing and delivery.</p> <p>The molecular sequence of this clone aligns with the gene accession number as a point of reference only. However, individual transcript sequences of the same gene can differ through naturally occurring variations (e.g. polymorphisms), each with its own valid existence. This clone is substantially in agreement with the reference, but a complete review of all prevailing variants is recommended prior to use. More info</p>
OTI Annotation:	This clone was engineered to express the complete ORF with an expression tag. Expression varies depending on the nature of the gene.
Components:	The ORF clone is ion-exchange column purified and shipped in a 2D barcoded Matrix tube containing 10ug of transfection-ready, dried plasmid DNA (reconstitute with 100 ul of water).
Reconstitution Method:	<ol style="list-style-type: none"> 1. Centrifuge at 5,000xg for 5min. 2. Carefully open the tube and add 100ul of sterile water to dissolve the DNA. 3. Close the tube and incubate for 10 minutes at room temperature. 4. Briefly vortex the tube and then do a quick spin (less than 5000xg) to concentrate the liquid at the bottom. 5. Store the suspended plasmid at -20°C. The DNA is stable for at least one year from date of shipping when stored at -20°C.
RefSeq:	NM_177346.5
RefSeq Size:	3336 bp
RefSeq ORF:	2199 bp
Locus ID:	229357
UniProt ID:	Q3UVY1
Cytogenetics:	3 E1
MW:	81 kDa
Gene Summary:	Orphan receptor.[UniProtKB/Swiss-Prot Function]

Product images:



Circular map for MR225181