

Product datasheet for **MR225143**

Dpp6 (NM_207282) Mouse Tagged ORF Clone

Product data:

Product Type:	Expression Plasmids
Product Name:	Dpp6 (NM_207282) Mouse Tagged ORF Clone
Tag:	Myc-DDK
Symbol:	Dpp6
Synonyms:	B930011P16Rik; D5Buc3; D5Buc4; D5Buc5; Dpp-6; DPP VI; Gm1377; In(5)6H-p; Peplb; Rw
Mammalian Cell Selection:	Neomycin
Vector:	pCMV6-Entry (PS100001)
E. coli Selection:	Kanamycin (25 ug/mL)



[View online »](#)

ORF Nucleotide
Sequence:

>MR225143 representing NM_207282
 Red=Cloning site Blue=ORF Green=Tags(s)

TTTTGTAATACGACTCACTATAGGGCGGCCGGGAATTCGTCGACTGGATCCGGTACCGAGGAGATCTGCC
 GCC**CGGATCGCC**

ATGGCTTCGCTGTACCAAAGGTTACCGGCAAGATCAACACCTCGCGCTCCTTTCCGGCGCCCCGGAGG
 CCAGTCGCCTTCTGGGTGGCCAGGGGCCGAGGAGGACGCGGGCCGAAGCCCTTGGGCCGAGGCGCA
 GGCGGTGGCGCCAGGGAGCGCGCGGTGCTGGTGGCCGGCCCGGTTCCAGTACCAGGCGCGGAGCGAC
 TGTGACGAGGAGGACGAGCTGGTGGGGAGTAATCCTCCACAGAGGAACTGGAAAGGAATCGCCATTGCGC
 TGCTCGTCATCCTTGTCATCTGCTCTGATTGTCACCTCAGTCATCCTGTTGACCCAGCGGAAGATAC
 CAGTCTGTCTCAGAAGAAAAAGTACTGTGGAAGATCTTTCAGTGAAGACTTCAAATCCATGACCCA
 GAGGCAAAGTGGATAAGCAATAAGGAATTCATCTACAGAGAACGGAAAGGGAGTGCATACTGCGGAATG
 TTGAAACAAATAATTCCACGGTGTAAATAGAAGGCAAAAAATTGAATCCTTGAGAGCCATCAGATATGA
 AATATCCCAGATAAAGAGTATGTGCTGTTCTCCTATAATGTGGAGCCGTATACCAACTCCCACACT
 GGATATTATGTTCTGAGCAAAATTCCTCATGGGGACCCTCAGAGTCTGGACCACCAGAAGTCAGCAACG
 CAAAGCTTCAGTATGCAGGGTGGGGCCAAAAGGCCAGCAGCTGATATTTATCTTTGAGAACAACATCTA
 CTAATGTGCACACGTTGGAAAGCAGGCAATTCGAGTGGTCTCTACAGGGAAGGAGGGCGTGATCTACAAT
 GGCCTCAGTGACTGGCTGTATGAAGAGGAGATTCTGAAGACCACATCGCTCATTGGTGGTCACCAGATG
 GTACAAGGCTCGCCTATGCCACCATCAACGACTCCCGGTTCCACTTATGGAGCTGCCAAGTACACAGG
 CTCTGTCTACCCACTGTGAAGCCCTACCACTATCCTAAGGCTGGCAGTGAACCCAGCATCTCGCTC
 CATGTCATCGGCTTGAATGGACCACCCACGACCTGGAGATGATGCCACCTGATGACCCGCGCATGAGG
 AATATTACATCACCATGGTGAATGGGCCACCCAGCAGCAAGGTCGCTGTGACTGGCTGAACCCGGCCCA
 GAATGTGTCAATCCTGACCCTCTGTGATGCCACCACGGGTGTCTGCACTAAGAAACATGAAGATGAAAGC
 GAAGCCTGGCTCCACAGACAGAATGAAGAGCCTGTGTTCTCAAAGATGGCAGGAAGTTTTTCTTTGTCA
 GAGCGATCCCACAGGAGGCCGGGTAATTTCTACCATATCACCGTATCATATCCAGCCCAACAGCAG
 CAATGACAACATCCAGTCTATCACCTCTGGAGACTGGGATGTGACCAAGATCCTGTCTATGATGAGAAG
 CGGAATAAGATCTATTTCTGAGCACAGAAGACCTGCCACGGAGACGACATCTCTACAGTCCAACACGG
 TAGATGACTTCAACAGGCAGTGTCTGTCATGTGACTTGGTGGAGAAGTGCACCTATGTCAGCGCTTCTTT
 CAGCCATAACATGGACTTCTTCTGCTCAAGTGTGAAGGCCCTGGCGTACCCACTGTTACTGTGCATAAC
 ACCACGGACAAGAGAAGAATGTTTGACTTGAAGCAAATGAGGAAGTTCAGAAGGCTATCAACGACCGGC
 AGATGCCGAAGATTGAATATCGAAAAATGAAGTAGAAGATTACAGCTTGCCAATGCAAATCTTGAAGCC
 GGCCACCTTACCAGACAGCTCACTACCCCTATTGCTCGTGGTGGATGGTACCCAGGGAGTCAGAGC
 GTGACAGAGAGGTTTGGGTGACCTGGGAAACAGTGTGGTGGTGGAGCAGCATTGGAGCCGTGGTGGTCAAGT
 GTGACGGCCGAGGACGCGGCTTCCAGGGAACCAAGCTCTACAGGAAGTACGGAGGCGGCTAGGCTTCT
 GGAGGAGAAGGACCAGATGGAAGCTGTAAGAACTATGCTGAAGGAGCAGTATATTGACAAGACTCGGTA
 GCTGTGTTGGGAAGGATTATGGTGGTACCTGAGCACTTACATCCTCCCAGCCAAGGGAGAAAAACAAG
 GTCAGACTTACCTGCGGCTCTGCGCTCTCCAATAACAGACTTCAAATCTATGCTCTGCATTTTCT
 TGAGAGGTACCTTGGCCTCCATGGACTCGACAACAGAGCGTATGAGATGACCAAGCTGGCACACCGAGTG
 TCAGCACTGGAGGACCAGCAGTTCTGATCATCCAGCCACGGCCGATGAAAAATCCATTTCCAGCACA
 CAGCTGAGCTCATCACGAGCTGATCAAGGAAAGGCCAATTACAGCTTACAGATCTACCCAGATGAGAG
 TCACTACTTCCACAGCGTGGCGCTCAAGCAGCACCTGTCCAGGTCCATCATCGGCTTCTTTGTGGAATGT
 TTCAGAGTCCAAGATAAGCTACCAACAGCCACAGCAAAAGAGGAGGAGGAGGAGC

ACGGTACGGCGCGCTCGAGCAGAACTCATCTCAGAAGAGGATCTGGCAGCAATGATATCCTGGATT
 ACAAGGATGACGACGATAAGGTTTAA

Protein Sequence: >MR225143 representing NM_207282
 Red=Cloning site Green=Tags(s)

MASLYQRFTGKINTSRSPAPPEASRLLGGQGPEEDAGPKPLGPQAQAVPRERGGAGGRPRFQYQARSD
 CDEEDELVGSNPPQRNWKGIAIALLVILVICSLIVTSVILLTPAEDTSLSQKKKVTVEDLFSDFKIHDP
 EAKWISNKEFIYRERKGSVILRNVTNNSTVLEGGKIESLRAIRYEISPDKEYVLF SYNVEPVYQHSHT
 GYYVLSKIPHGDPQSLDPPEVSNAKLQYAGWGPKGQQLIFIFENNIYYCAHVQKQAIRVVSTGKEGVIYN
 GLSDWLYEEEEILKSHIAHWSPDGTRLAYATINDSRVPLMELPTYTGSVYPTVKPYHYPKAGSENPSISL
 HVIGLNGPTHLEMPDPDDPRMREYYITMVKWATSTKVAVTWLNRAQNVSILTLCDATTGCTKKHEDES
 EAWLHRQNEEPVFSKDGRKFFVRAIPQGGRGKFYHITVSSSQPNSSNDNIQSITSGDWDVTKILSYDEK
 RNKIYFLSTEDLPRRRHLYSANTVDDFNRCQCLCDLVENCTYVSASF SHNMDFFLLKCEGPGVPTVTVHN
 TTDKRRMFDLEANEVQKAINDRQMPKIEYRKIEVEDYSLPMQILKPATFTDTAHYPLLLVVDGTPGSQS
 VTERFEVTWETVLVSSHGAVVVKCDGRSGFGQTKLLQEVRRRLGFLEEKDQMEAVRMTLKEQYIDKTRV
 AVFGKDYGGYLSTYILPAKGENQGQFTTCGSALSPITDFKLYASAFSERYLGLHGLDNRAYEMTKLAHRV
 SALEDQQLIIHATADEKIHQHTAELITQLIKGKANYSLQIYPDESHYFHSVALKQHLRSRISIGFFVEC
 FRVQDKLPTATAKEEEEEED

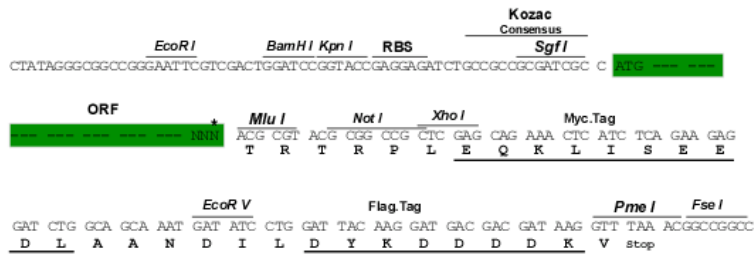
TRTRPLEQKLISEEDLAANDILDYKDDDDKV

Chromatograms: https://cdn.origene.com/chromatograms/mm9003_f02.zip

Restriction Sites: SgfI-MluI

Cloning Scheme:

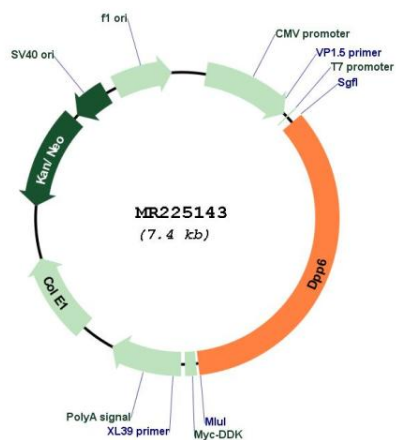
Cloning sites used for ORF Shuttling:



* The last codon before the Stop codon of the ORF

ACCN:	NM_207282
ORF Size:	2577 bp
OTI Disclaimer:	The molecular sequence of this clone aligns with the gene accession number as a point of reference only. However, individual transcript sequences of the same gene can differ through naturally occurring variations (e.g. polymorphisms), each with its own valid existence. This clone is substantially in agreement with the reference, but a complete review of all prevailing variants is recommended prior to use. More info
OTI Annotation:	This clone was engineered to express the complete ORF with an expression tag. Expression varies depending on the nature of the gene.
Components:	The ORF clone is ion-exchange column purified and shipped in a 2D barcoded Matrix tube containing 10ug of transfection-ready, dried plasmid DNA (reconstitute with 100 ul of water).
Reconstitution Method:	<ol style="list-style-type: none">1. Centrifuge at 5,000xg for 5min.2. Carefully open the tube and add 100ul of sterile water to dissolve the DNA.3. Close the tube and incubate for 10 minutes at room temperature.4. Briefly vortex the tube and then do a quick spin (less than 5000xg) to concentrate the liquid at the bottom.5. Store the suspended plasmid at -20°C. The DNA is stable for at least one year from date of shipping when stored at -20°C.
RefSeq:	NM_207282.3 , NP_997165.2
RefSeq Size:	4719 bp
RefSeq ORF:	2580 bp
Locus ID:	13483
UniProt ID:	Q9Z218
Cytogenetics:	5 12.92 cM
MW:	97.7 kDa
Gene Summary:	Promotes cell surface expression of the potassium channel KCND2 (PubMed:22311982). Modulates the activity and gating characteristics of the potassium channel KCND2 (PubMed:22311982). Has no dipeptidyl aminopeptidase activity (By similarity). [UniProtKB/Swiss-Prot Function]

Product images:



Circular map for MR225143