

Product datasheet for **MR225140**

Prkg2 (NM_008926) Mouse Tagged ORF Clone

Product data:

Product Type:	Expression Plasmids
Product Name:	Prkg2 (NM_008926) Mouse Tagged ORF Clone
Tag:	Myc-DDK
Symbol:	Prkg2
Synonyms:	AW212535; cGK-II; CGKII; Prkgr2
Mammalian Cell Selection:	Neomycin
Vector:	pCMV6-Entry (PS100001)
E. coli Selection:	Kanamycin (25 ug/mL)



[View online »](#)

ORF Nucleotide Sequence:

>MR225140 ORF sequence
 Red=Cloning site Blue=ORF Green=Tags(s)

TTTTGTAATACGACTCACTATAGGGCGGCCGGGAATTCGTCGACTGGATCCGGTACCGAGGAGATCTGCC
 GCC**CGGATCGCC**

ATGGGAAATGGTTCAGTGAAGCCCAAGCATGCTAAGCACCCAGATGGCCATTCAGGGAACCTCAGCAATG
 AAGCCCTGCGGAGCAAGGTGTTGGAGCTGGAGCGGGAGCTGAGGAGGAAGGACCGGAACCTCAGGAACG
 GGAGTACCACCTGAAGGAGCTTCGGGAGCAGCTGGCCAAGCAGACCGTGGCCATCGCAGAGCTCAGAGAA
 GAACTGCAGAGCAAGTGCATCCAGCTGAACAAGCTGCAGGATGTGATCCACGTGCAGGGAGGAAGCCAC
 TGCAGGCCCTCCTCCGACAAAGTGCCTCTGGATGTTACCCGCAAGACCTCAGGCTTGGTCTCGCTCCACAG
 CAGGAGGGGGCGAAGGCTGGAGTGTCTGCAGAGCCAACCACCCGAACCTATGACCTCAACAAACCCCCC
 GAGTTTTCTTTGAGAAAGCGAGAGTCAAGGAGATTCCAGTGAAGAAAGCTCATCACAGATGCCCTGA
 ATAGAACCAGTTTCTGAAGAGATTGGATCCCCAGCAGATCAAGGACATGGTGAATGCATGTACGGGAG
 AAATATCAACAGGGCAGCTACGTCATTAAGCAGGGGGAACCAGGCAACCATATCTTTGTCTGGCCGAG
 GGTAGACTTGAGGTGTTCCAGGGAGAGAAGTTGCTATCATCCATCCCAATGTGGACCACGTTTGGGGAAC
 TGCTATTTTGTACAACCTGACTCGGACTGCCTCAGTGAAGCGATTACCAATGTTAAAACCTTGGGCCCT
 CGATAGAGAGGTTTTCCAGAACATTATGAGGAGAACAGCCCAAGCCCGGGATGAGGAGTACAGAACTTC
 CTCAGAAGTGTCTCCTGTTGAAGAATTAACCTGAAGCAAACTAACCAAGATCATTGACTGCTTGGAAAG
 TGGAACTATGACAAAGGAGATTACATCATCAGAGAAGGAGAAGAAGGGAGCACCTTTTTCATTTTGGC
 AAAAGGCAAGGTGAAAGTACACAGAGCACAGAGGGCCATGATCAGCCACAGTTGATCAAGACACTGCAG
 AAATGATGTGCGATGCCTCGTATAGATCGAGAAACATTCAACCAAACTGTCGGGACATTTGATGAACT
 CCAAAAATATCTTGAGGGGTATGTGGCCACCCTGAACCGTGACGATGAAAAAAGACACGCAAGCGCTCC
 ATGTCTAGCTGGAAGCTGTCAAAGCCCTTCTCTGGAGATGATTCAGCTGAAAGAGAAGGTGGCCCGAT
 TCTCCTCAACCTCCCATCCAGAACCTCGAGATTATCGCAACACTGGGCGTTGGTGGGTTGGAAAGAGT
 GGAGCTTGTTAAAGTAAAAATGAGAAATGTTGCTTTTGGCATGAAGTGTATAAGGAAGAAGCACATTGTT
 GATACAAAGCAGCAAGAACATGTCTACTCAGAAAAGAGGATCCTGGAAGAGCTGTGTTCTCCCTTCATCG
 TGAAGTTGTATCGTACTTTCAAGGACAATAAATATGTATACATGCTTCTGGAGGCTGCTTAGGTGGGGA
 GCTGTGGAGTACTGAGGGACAGAGGCAGCTTCGATGAACCCACCTCCAATTTCTGTGTCGCTTGTGTG
 ACAGAAGCATTGATTATCTGCACCGACTAGGCATCATCTACAGAGACCTGAAGCCAGAGAACTTAATTC
 TGGATGCCGATGGCTACCTTAAGTTGGTTGACTTTGGATTCGCTAAGAAGATTGGCTCTGGACAGAAAAC
 GTGGACATTCTGTGGACTCCAGAGTATGTGGCCCCGAGGTCATTCTTAACAAAGGACATGACTTCAGT
 GTGGATTTCTGGTCCCTGGGATTCTGGTCTATGAGCTCCTAACGGGCAACCCCTCCCTTTTCTGGGATAG
 ACCAAATGATGACCTACAATTTGATTCTCAAGGGAATCGAGAAAATGGATTTCCCCAGAAAAGATAACAAG
 GCGCCCTGAGGATTTGATCCGGAGGCTTTCAGGCAAAACCCAACAGAAAAGGCTGGGAAATCTGAAGAAC
 GGGATCAACGACATTAAGAAACACAGGTGGTTAAATGGTTTTAATTGGGAAGGGCTGAAAGCACGGAGCC
 TTCCGTACCTTTACGGAGAGAGCTCAGTGGCCCCATAGATCACAGCTACTTTGACAAGTATCCTCCTGA
 AAAGGGGTGCCTCCGGATGAAATGTCAGGCTGGGATAAAGACTTC

ACGCGTACGCGGCCGCTCGAGCAGAAACTCATCTCAGAAGAGGATCTGGCAGCAAATGATATCCTGGATT
 ACAAGGATGACGACGATAAGGTTTAA

Protein Sequence: >MR225140 protein sequence
 Red=Cloning site Green=Tags(s)

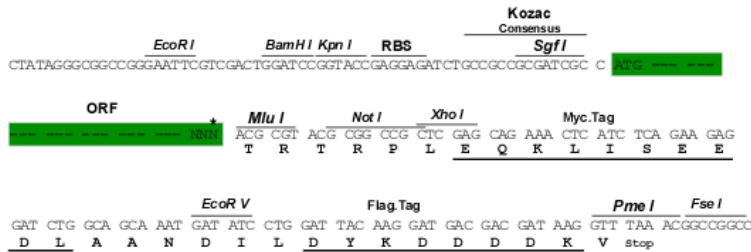
MGNQSVKPKHAKHPDGHSGNLSNEALRSKVLLELERELRRKDAELQEREYHLKELREQLAKQTVAIAELTE
 ELQSKCIQLNKLQDVIHVQGGSPQLQASPKVPLDVHRKTSGLVSLHSRRGAKAGVSAEPTTRTYDLNKPP
 EFSFEKARVRKDSSEKKLITDALNKNQFLKRLDPQQIKDMVECMYGRNYQQGSYVIKQGEFGNHIFVLAE
 GRLEVFQGEKLLSSIPMWTTFGELAILYNCTRTASVKAITNVKTWALDREVFQNIIMRRTAQARDEEYRNF
 LRSVSLLNLPEDKLTKIIDCLEVEYYDKGDYIIREGEEGSTFFILAKGKVKVTQSTEGHDQPQLIKTLQ
 KGEYFGEKALISDDVRSANIAEAENDVACLVIDRETFNQTVGTFDELQKYLEGYVATLNRDDEKRHAKRS
 MSSWKLSKALSLEMIQLKEKVARFSSTSPFQNLLEIIATLGVGGFGRVELVKVKNENVAFAMKCIRKKHIV
 DTKQQEHVYSEKRILEELCSPFIVKLYRTFKDNKYVYMLLEACLGGELWSILRDRGSFDEPTSKFCVACV
 TEAFDYLHRLGIYRDLKPENLILDADGYLKLVDGFAKKIGSGQKTWTFCTGPEYVAPEVILNKGHDFS
 VDFWSLGILVYELLTGNPPFSGIDQMMTYNLILKGIEMDFPRKITRRPEDLIRRLCRQNPTERLGNLKN
 GINDIKKRWLNNGFNWEGLKARSLPSPLRRELSPIDHSYFDKYPPEKGVPPDEMSEGWKDF

TRTRPLEQKLISEEDLAANDILDYKDDDDKV

Restriction Sites: SgfI-MluI

Cloning Scheme:

Cloning sites used for ORF Shuttling:



* The last codon before the Stop codon of the ORF

ACCN: NM_008926

ORF Size: 2289 bp

OTI Disclaimer: The molecular sequence of this clone aligns with the gene accession number as a point of reference only. However, individual transcript sequences of the same gene can differ through naturally occurring variations (e.g. polymorphisms), each with its own valid existence. This clone is substantially in agreement with the reference, but a complete review of all prevailing variants is recommended prior to use. [More info](#)

OTI Annotation: This clone was engineered to express the complete ORF with an expression tag. Expression varies depending on the nature of the gene.

Components: The ORF clone is ion-exchange column purified and shipped in a 2D barcoded Matrix tube containing 10ug of transfection-ready, dried plasmid DNA (reconstitute with 100 ul of water).

- Reconstitution Method:**
1. Centrifuge at 5,000xg for 5min.
 2. Carefully open the tube and add 100ul of sterile water to dissolve the DNA.
 3. Close the tube and incubate for 10 minutes at room temperature.
 4. Briefly vortex the tube and then do a quick spin (less than 5000xg) to concentrate the liquid at the bottom.
 5. Store the suspended plasmid at -20°C. The DNA is stable for at least one year from date of shipping when stored at -20°C.

RefSeq: [NM_008926.4](#), [NP_032952.3](#)

RefSeq Size: 4696 bp

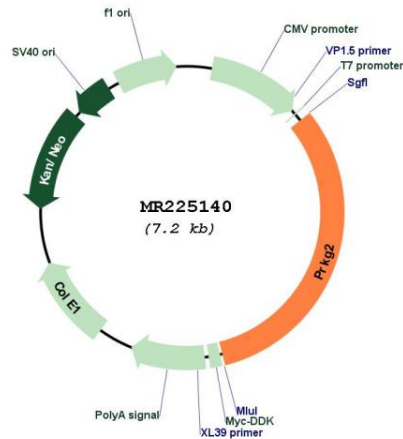
RefSeq ORF: 2289 bp

Locus ID: 19092

Cytogenetics: 5 48.35 cM

MW: 87.3 kDa

Product images:



Circular map for MR225140