

Product datasheet for MR225114

Abca12 (NM_175210) Mouse Tagged ORF Clone

Product data:

Product Type:	Expression Plasmids
Product Name:	Abca12 (NM_175210) Mouse Tagged ORF Clone
Tag:	Myc-DDK
Symbol:	Abca12
Synonyms:	4832428G11Rik; 4833417A11Rik
Vector:	pCMV6-Entry (PS100001)
E. coli Selection:	Kanamycin (25 ug/mL)
Cell Selection:	Neomycin
ORF Nucleotide Sequence:	>MR225114 representing NM_175210 Red=Cloning site Blue=ORF Green=Tags(s)

TTTTGTAATACGACTCACTATAGGGCGCCGGAATTCGTCGACTGGATCCGGTACCGAGGAGATCTGCC
GCC**CGATCGCC**

ATGGCTTCCCAGTTTCATCAGCTTCGGATCCTGGTGTGGAAAAATTGGCTAGGTGTCAAAGGCAGCCGC
TTTGGACACTTGTCTTGATCTTATGGCCAGTCATTATTTTCATAATTCTGGCTATTACCCGGACAAAATT
CCCGCCAAACAGCAAACCAACTTGTACCTCGCACCTCGAAACCTTCCCAGTGTGGATTCTTCCCATT
CTACAAACCTTGCTCTGTGACACAGACTCTAAATGTAAAGACACGCCCTATGGACCACGAGATCTGTCC
GCAGGAAGGGGATTGATGGACCGCTATTTAAAGAAAGCGAAATCTGAAAAAGCCGTCCAACCCGAAGAG
GGACAGCAATTTATCACTCCGGAGCACCAAGTCCAGAAAGAAGTCACACATCATTGGCCACAGTACCT
CCAAGACCAAGCTATGATTTGGAAGGAACAGGCACAGAAAATTTCAATGGTAGCCAATTGCTTACACGCA
TCCTTGGTTTGGAAAAGCTGTGAAGCAAAATCAACTCCAGAAGACATACGAAGAGAGCTGTGTGAGAG
CTACCTGGGTACTGCGGACTATGCCTTCTCTGGGTACCCTAGGAAAAACGTTTTTAACAAATTT
TGCTTTTGAACATGACACTTTTAGAGTCTTCACTCCAGGAATAAAATATCAAGTCTCTCAGATGTCAA
GTGACCCCGACAATCAGAAGAGGGTGTCCGGGACTTGTCCAGGTGCTGTCTTTTTCTCTCAAGTGCA
GCAGCAAAGAGAAGTGTGCAACTTCTGTGAGCTTACCAGATGTGTTTCAAGATGGCACCTCATTGAGC
AGTCTATTTGGTGTCTTCAAAGGCAAACAGGGTGTGCTGGTAGTGCAGAAAGTTTACCACGTGTT
AAACTGATGAAGGATTACGACCCCTCCAGAAGTCTGTTAAACATCTGCTGAACACTCTGGACTCCCCAAT
GCAAGGTGACAATTAACGCACGCATGGAGTGATGATGATGAGCAGACTGTCCCGAGCAGTCTGGCT
GCACAGCTCCTGATCCTGGAAAATTTGAAGATGCCATCTTGAACATATCATCAAATAGTCCATATTCTC
CTTATTTGGCGTGTGTAAGGAACATGACTGACAACTTGGCTAAGGGATCACCAGACAATCTAAAATTTCT
GCAGTCCACAATCACTTCAGAAAATCTTCTTCAAATGGCTCCTCCGAGGACAGCTTCCCTCCATTT
CTTGAGATCCTGAAATCCAAGCTGTCTCAACTTCGAAATTTGACGGAATCTCTGCGAATCAGAGACTT
TCAGTTTCATCAAGAAGTCTTGCCAGTTCTTAACATGAGCTTCGAGAGGCTGTGTGAAGACCATGCCTT
TACGTGCAACTGATTGAAGCGGCAGAGCTGGGCACTGACCTCACCAGTGGCTTACTGTACCATGCAAT
ATAATATCTGCAAAGCTGAGGGTTTGCTCACTGGAGATCCCAGCAAATTAATCTCAATGTGGACTGGC



[View online »](#)

TCCTGGAACAGGCATTGCAAATGAATTACTTGGAGAATATCACACGGCTCATACCAACCGTAGAGGCCAT
 GCTGCATGTCAACACCAAGTGCAGACGCTTCTGAGAAGCCAGGTC AATTAAGAGAAATGTTTAAAAACATA
 GATTTGCTGAAAGAAGATCTGAGGGCGATAGGGATGTCCAACACAAGTATCGACAAGCTGTTGGCCATTC
 CCATTCAGACAATAGAGCCGAGATAATTTCTCGTGTATTCTGGTTGCACTCATGTGATACCAACGTCAC
 CAACCCAAACTGGAAGATGCCATGAAGGATTTCTGCAAGCTGCCTTCCAGAGAGATCACATCAGTCC
 TACCTCATCGGACTCACCTTCTGCACTACTTAGACATTTACAATTTACATAACAAGGTGTTTTCCCAA
 GGAAGGATCAAAAGCCAATGAAAGGATGATGGAGCTTTTCATAAAGCTGAGAGAGATTCTCAATCAGT
 GGCTTCCGGCACACATCCACTGCTGGACAAAATGAGATCCCTGAGACAAAATGCACCTGCCAGGAGTGT
 CCATTAACACAGGCCATGTACAGAAACTCGAATGAACTCGCCAGCAGGATCGTTCAGTACTATCTCCC
 AGGCTCTGTGCTCCAGGGGATCACCACCGAGTACTTAACTGCTATGCTGCCTTCTCCAGAAGCCAAA
 AGGCAACCACACCAAGGATTTTCTCACTATAAAATTAATAAAGAAAGAAATGCTTCAAAAACACGGGATT
 CCTTTAAATGCTACACCATTTTGTCTCCCTTACAAAGACATCATTAAATGCCTGCTGGGCCTGTGA
 TTTGGGCTTCTTGAACCCATGTTGTTGGAAAGATTTATATTCACCATATAACCCAACACAAAGGC
 CATTATGGAAGTCCAATGTAAGTCTAAGACAGCTGGCGGAATTAAGAGAAAAATCTCAGGAGTGGATG
 GATAAGTCACCAATTTTTCATGAATTCCTCCACCTGCTAAACCAGACGATCCCAATGCTCCAGAATACTC
 TACGGAACCCCTTGTGCAAGTTTTTGTGAAGTCTCCGTGGGACTCGATGCTGTGCAACTCCTGAAGCA
 GATAGACGACCTTGATGTTCTCAGGCTGAAATAGTGAACAACATTGACATCATTGATCAGCTCAACACA
 CTGTTCTCCCTGACTGTAATAATTTCTCCTGTGTTCTTTACGACCGTATTCAGGCGTCAGACACTGTAG
 AGGAGATGGAGACGGTGGCCGAACAACCTACAAGAGCAACGAGCTCTTGGAAAGTGCATTTTTAAGCT
 TCCATCTAACGGAAAGTTTGCACAGAGGGTTTGACCCTGAAAAAGTGTCTTCTCCTATCGTAAGATAT
 ACCATCCGCATGAGTCTGAAGACGGCACAGACCACAAGGAGCATAAGAACAAGATCTGGGCCACGGGC
 CACACAACCTCCATCCATAACCAGATCTATGGCCGGCTTTCATTTATCTGCAGGATGACATTGAGAG
 AGCAATTTAGTACAAACAGGAAGGAACCTCACAGGAAGTCCCGTCCAGGTTCAAGCGGTTCTTTAT
 CCCTGCTCATGAAGGACAATTTCTCACCAGTGTCTCCTATTCCCTCCGATTGTGCTTATGGTCGCT
 GGGTTGATTTATAGCTGCCTTTGTTAAAAAGCTAGTCTACGAGAAGGACCTTCGGCTCCATGAGTACAT
 GAAGATGATGGGTGCAACTCCTGCAGCCATTTCTTGCCTGGCTTATAGAGAGTATTGGTTCTTGCTG
 GTCACCATTGCAATCCTCATCGTTATCCTCAAGTTTGGCAATATCTTCCCAAGACAAACGGCTTCATTT
 TGTTCTGTACTTCTCAGACTACAGTCTCAGTATTGCCATGAGCTATCTCATCAGTGTCTTCTTCAA
 CAACACCAACATTGCAGCTCTGATTGGAAGCCTCATCTATGTCATCGCTTTTTCCCATTTATTGTTCTG
 GTTACAGTTGAGGATGAGCTGAGCTACGTTATTAAGTATTATGAGCCTGCTGTCCCGACAGCATTCA
 GCTATGCAAGCCAATATATTGCACGGTATGAAGAACAAGGCGTTGGTCTTCAGTGGGAAAATATGTACAA
 ATCCCCTGTTCAGGATGACACCCTCATTGGCTGGCTGTGCTGCTAACTCCTAGCAGACTCCTTCATT
 TATTTCTTATTGCTTGGTACGTGAGGAATGTTTTCCAGGGACATATGGAATGGCAGCTCCATGGTATT
 TTCCCATCCTTCTCCTATTGGAAGAGCGCTTTGGATGCGCAGAGGTGAAGCATGAGAAAAAGCAATGG
 CTTAATGTTTACTAATATCATGATGCAGAACCAACCCCTTCTGCCAGTAAGACAAGTCTGACTGTGCA
 TTTCCCTCCAACATTGAACCTGAACCTAAAGATCTCCAAGTTGGAGTTGCCCTTCATGGGGTCACAAAGA
 TCTATGGCTCAAAAACAGCTGTTGAGAACCTCAATCTGAACTTCTACGAAGGGCACATTACATCACTGTT
 GGGGCCAAACGGAGCTGGCAAAACCACAACAATCTCCATGCTGACTGGGCTGTTTGGTGCCACAGCGGT
 ACCAATTTTGTATACGGAAAAGATATCAAGACAGACCTGAATACTGTTTCGGAAAAACATGGGGTCTGCA
 TGCAACATGACGCTTGTTCAGTTACCTAACCAAGGAACACCTTCTCCTGTATGGCTCCATCAAAGT
 TCTCACTGGACAAAACACAGCTCCATGAGGAGTTAAAAGGACTTTAAAAGACTGACTGTATAGT
 CATCGCCATAAGAGAGTTGGAACGTTGTCGGGAGGAATGAAGAGGAAGTTGTCCATATCCATAGCTCTCA
 TCGGTGGCTCCAGGATGATTTTGGATGAACCATCCACGGGCTTACCCATGTTCTCGCCGAAGCAT
 ATGGGATGTCATATCCAAGAACAAAACGCAAGAACAATCATTCTGTCCACACCACTTGGATGAGGCC
 GAAGTGTGAGTGACCGCATCGCTTCTGGAACAGGGTGGGCTCCGGTGTGTTGATCTCCATTTTACC
 TCAAGGAAGCTTTTGGGATGGTACCACCTCACACTACCAAGAAGAAGAGTCCAAACCTAGACACAAA
 TGCAATCTGTGACACAGTGGCAGTGACAGCAATGATCCAGTCGCACCTTCTGAAGCCTACCTCAAAGAG
 GATATTGGGGGAGAGCTTGTATATGTGCTCCCTCATTAGCAGCAAAGTCTCAGGAGCTTACCTGTCCC
 TCTGAGAGCACTGGACAAGGGCATGGTAACTCAACATCGGCTGCTATGGCATTTCAGACACCACTGT
 TGAAGAGGTTCTTCTGAACTTGACAAAAGATTCGCAAAAAGTAGTAATATGAGTCTGGAGCACTTAAACA
 CAGAGGAAAGTTGGGAACCCAGTGCCAACGGGACCTCCACTCCTGACGACCTGTCTGTGAGCAGCAGCA
 ACTTACCAGCAGAGACGACAAAAGTCTGACAAGAAGCGAGAAGTGGAGGGCTTTGGACTTACTGAA

GAAGATAATGGCTATTCTCATCAAGAGGTTCCACCACACCCGCCGGAAGTGGAAAGGTCTCATTGCTCAG
GTCATTCTCCCCATCGTCTTTGTAGCCACGGCCATGGGTCTCGGCACACTGAGAGATTCCAGCAACAGTT
ACCCAGAGATCATGATCTCTCCGTCCATTTACGGCACCTCCGAACAGACAGCCTTCTACGCGAATTTTGA
TCCAAGCACCAGTGGTCTGGTCTCAGCTCTCTGGAATTTCCCTGGCATTGACAATGTGTGTTGAATACT
AGTGACTTGCAGTGTAAAAAAGATGATCTGGGAAAGTGGAAACACAAGTGGAGAAGCTATCGACAAC
TTGGTGTGTTGCTCCTGTCCGACAATGTCCAGGAATGCCCCAAATCAACTATCATCCACCTCATAGAAG
AACTTACTTCCCAAGTTATTTATAACCTCACTGGAAACACATGGAAAATTATCTTATAACAACCTGCA
AATCAATTTGTGCAGAAAAGATATGGAGGTTGGAGTTTTGGGATGAAATTGACTAACGACCTTCGTTTTG
ATGTGACAGCTGTCCCTGACAATAGAACTCTTGCTAAGGTGTGGTACGATCCGGAAGGCTACCATTCCCT
CCCAGTTACCTCAACAGCCTCAACAACCTCCTCCTGAGGGTTAACATGTCAGAGTACGATGCTGCCCGA
CACGGGATCATCATGTATAGCCACCCTTATCCAGGGTACAAGACCAGGAACAAGCCACAATCAGCAGTT
TAATCGATATTTAGTGGCGCTGTCCATCTGATGGGCTACTCTGTACCACCTGCCAGCTTTGTCACCTA
CATTGTCAGGGAACATCAGACCAAAGCCAAGCAGTTGCAGCACATTTCTGGCATCGGTGTGACGTGCTAC
TGGGTGACAAATTCATCTATGACATGGTCTTCTATTTGGTTCCTGTAGCATTTCATTTGGTGTACCG
CAATTTTCAAGCTTCTGCCTTCTACAGTGGAAACAATCTAGGCGCTGTATCCCTCCTACTTTTGTGTT
TGGCTATGCAACATTTTCTGGATGTACCTGCTGGCTGGCTCTTCCACGAAACAGGAATGGCCTTCATC
ACTTATGTGTGTCAACCTGTTCTTTGGTATCAATTCCATCGTTTTCCCTGTCGGTGGTATACTTCCCTT
CCAAGGAAAAGCCTAATGACCCGACGCTAGAACTTATTTCTGAACTCTCAAGCGGATTTTCTGATCTT
CCCCAATTCTGTTTTGGCTACGGTTTGATTGAACTTTCTCAGCAACAGGCAGTCTTGGATTTCTAAAA
GCCTACGGTGTGGAATATCCAAGCGAGACCTTTGAGATGGATAAGCTGGGGCAATGTTTGTGGCCTTGG
TTTCTCAGGGCACCATGTTTTCTTGTGCGACTCCTCATCAATGAGTGGCTGATAAAGAAGCTCAGGCT
CTTCTTCAGGAAATTTACATCTTCGCCTATCATGGAGACAGTAGATGAAGATGAAGATGTGCGGGCTGAG
AGATTTTCGAGTTGAGAGTGGTGCAGCTGAGTTTGACCTGGTCCAGCTCCATCGTCTCACAAGACCTACC
AGCTGATCCACAAGAAGATTATAGCTGTCAACAACATCAGCCTGGGGATACCTGCTGGAGAGTGTGTTGG
CCTCCTTGGTGTGAACGGAGCAGGGAAAACCACTATATTTAAGATGCTGACTGGAGACATAATTCCTTCC
AGTGGAAACATTTCTGATCAGAAACAAGAGCGGATCCCTGGGACATGTGGATTCTCACAGCTCTTTGGTTG
GCTACTGCCCTCAGGAGGACGCTTTAGATGACCTAGTAACTGTGGAAGAGCACTTGTATTTCTATGCCAG
AGTGCATGGGATTCAGAGAAGGACATCAAGACACTGTTCAAACTCCTTAGGAGACTTCACTTGATG
GCCTACAAGGACAGATCTACCTCCATGTGCAGTTACGGCACAAAAGGAAGCTGTCCACTGCCCTGGCCT
TGATAGGGAACCGTCCATCCTCCTGCTGGATGAGCCAAGCTCTGGGATGGATCCCAAGTCAAACGACA
CCTCTGGAGGATCATTTCAGAAGAGGTGCAGAACAATGCTCTGTATCCTCACATCTCACAGCATGGAA
GAATGTGAAGCTCTTTGTACCCGCTGGCCATTATGGTGAACGGAAGGTTCCAGTGCATTGGGTCTCTGC
AACACATAAAAAGCAGGTTTGGACGTGGATTTACTGTCAAGGTTCACTTGAAAAATAATAAAGTGAAGT
GGAAACCTCACGAAGTTTATGCAGCTACACTTTCCAAAAACATACTTAAAAGATCAGCACCTGAGCATG
CTGGAGTACCAGTGCCAGTACAGCAGGAGGGTTCGAAACATCTTTGACCTTCTGGAAACCAACAAGA
CTGCTTTAAATATCACAATTTCTCGTGAGCCAGACCTTTGGAGGAGGTTTTTCACTTGGCCAA
AGACCAAAAATCCTACGAAAATGTTGATACCAGTAGCCAAGGTTCCACCATAAGTGTAGACTCACAGGAA
GATCAACTAGATTCT

ACGCGTACGCGGCCGCTCGAGCAGAACTCATCTCAGAAGAGGATCTGGCAGCAAATGATATCCTGGATT
ACAAGGATGACGACGATAAGGTTTAA

Protein Sequence: >MR225114 representing NM_175210
 Red=Cloning site Green=Tags(s)

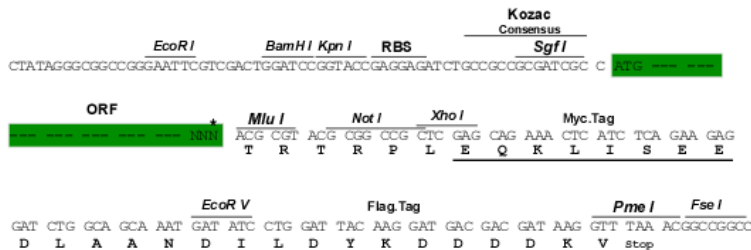
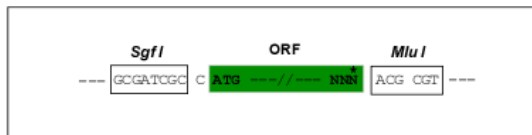
MASQFHQLRILVWKNWLVGKRQPLWTLVLILWPVIFIIILAITRTKFPPTAKPTCYLAPRNLP SAGFFPF
 LQTLLCDTDSKCKDTPYGRDLRRKGDGPLFKESEILKKPSNPKRDSNLSLRSTQVPERSHSLATVP
 PRPSYDLEGTGTENFNQSLLTRILGLEKLLKQNSTPEDIRRELCESYPGYTADYAFSWVTLGKNVFNKF
 CLSNMTLLESSLQELKYQVSMSSDPDNQKRVFRGLVQVLSFFSQVQQQREVWQLLSSLPDVFNQNGTSLS
 SLFGVLQKANRVLLVVQKVYPRVQTDEGFSTLQKSVKHLNLTLDSPMQGDNSTHAWSDDEQTLSPSSLA
 AQLLILENFEDAILNISSNSPSPYLACVRNMTDNLAKGSPDNLKLLQSTIHFRKSFLQNGSSEDSFPPF
 LEILKSKLSQLRNLTELLCESETFSSIKKSCQFSNMSFERLCEDHAFHVQLIEAAELGDLTTGLLYHDN
 IISAKLRGLLTGDPKINLNVDWLLEQALQMNYLENITRILPTVEAMLHVNTSADASEKPGQLREMFKNI
 DLLKEDLRAIGMSNTSIDKLLAIPDPNRAEIIISRVFWLHSCDTNVTNPKLEDAMKEFCKLPLPERSHQ
 YLIGLTLHYLDIYNFTYKVFPRKQKPMERMELFIKREILNQLASGTHPLLDKMRSLRQMHLPKRSV
 PLTQAMYRNTRMNSPAGFSSTISQALCSQGITTEYLTAMLSSQKPKGNHTKDFLTYKLTKEEIASKYGI
 PLNATPFCFSLYKDIINMPAGPVIWAFKPMMLLGGKILYSPYNPTTKAIMEKSNVTLRQLAELREKSQEW
 DKSPIFMNSFHLLNQTIPMLQNTLRNPFVQVVFVSVGLDAVELLKQIDDLVLRLLKLVNNDIIDQLNT
 LSSLTVNISSCVLYDRIQASDTVEEMETVAEQLYKSNELFGSVIFKLPSNGSLHRGDFPEKVSPLPIVRY
 TIRMSLKAQTTRSIRTKIWAPGPHNSPHNQIYGRAFIYLQDSIERAIIELQTGRNSQEVAVQVQAVPY
 PCFMKDNFLTSSVSLPIVLMVAWVVFIAAFVKKLVYEKDLRLHEYMKMMGVNSCSHF FAWLIESIGFLL
 VTVEDELSYVIKVFMSLLSPTAFSYASQYIARYEEQGVGLQWENMYKSPVQDDTTSFGWLCCILADSF
 YFFIAWYVRNVFPGTYGMAAPWYFPIPSYWKERFGCAEVKHEKSNGLMFTNIMMONTNPSAKTSPDCA
 FPSNIEPEPKDLQVVALHGVTKIYGSKTAVENLNLNFYEGHITSLLPNGAGAKTTTISMLTGLFGATAG
 TIFVYGGDIKTDLNTVRKNMGVCMQHDVLF SYLTTKEHLLLYGSIKVPHWTKTQLHEEVKRTLKDTGLYS
 HRHKRVGTLSGGMKRKLSISIALIGGSRVILDEPSTGVDPSCRRSIWDVVISKNKTARTIILSTHHLDEA
 EVLSDRIAFLQGGRLCCGSPFYLKEAFGDGYHLTLTKKSPNLDTNAICDTVAVTAMIQSHLPEAYLKE
 DIGGELVYVLPFSTKVS GAYLSLLRALDKGMGKLNIGCYGISDTTVEEVFLNLTKDSQKSSNMSLEHLT
 QRKVGNSANGSTPDDL SVSSNFTDRDDKVLTRSEKLEGFGLLLKKIMAILIKRFHHTRRNWKGLIAQ
 VILPIVAVATAMGLTLRDSNSYPEIMI SPSIYGTSEQTAFYANFDPSTSGLV SALWNFPGIDNVCLNT
 SDLQCLKKDDL GKWNTSGE AIDNFGVCSCSDNVQECPKFNYHPPHRTYSSQVIYNLTGKHMENYLITTA
 NHFVQKRYGGWSFGMKLTNDLRF DVTAVPDNRTLAKVWYDPEGYHSLPAYLNSLNNFLLRVNMSEYDAAR
 HGIIMYSHYPGVQDQEATISSLIDILVALSILMGYSVTTASFTYIVREHQTKAKQLQHSIGIVTCY
 WVTNFIYDMV FYLVPVAFSIGVIAIFKLP AFYSGNNLGAVSLLLLFGYATFSWYLLAGL FHETGMAFI
 TYVCVNLFFGINSIVSLSVVYFLSKEKPNPTLEL ISETLKRIFLIFPQFCFGYGLIELSQQAVLDFLK
 AYGVEYSETFEMDKLGAMFVALVSQGMFFLLRLLINEWLIKLRLLFRKFTSSPIMETVDEDEDVRAE
 RFRVESGAAEFDLVQLHRLTKTYQLIHKKIIAVNNISLGPAGECFGLLVNGAGKTTIFKMLTGDII PS
 SGNILIRNKSGSLGHVDSHSSLVGYCPQEDALDDLVTVEEHLFYARVHGIPEKDIKDTVHKLRLRLHLM
 AYKDRSTSMCSYGTKRKLSTALALIGKPSILLLDEPSSGMDPKSKRHLWRIISEEVQNKCSVILTSHSME
 ECEALCTRLAIMVNGRFQCIGSLQHIKSRFGRGFTVKVHLKNNKVS METLTKFMQLHF PKTYLKDQHL SM
 LEYHVPVTAGGVANIFD LLETNKTALNITNFLVSQTTLEEVFINFAKDQKSYENVDTSSQGSTISVDSQE
 DQLDS

TRTRPLEQKLI SEEDLAANDILDYKDDDDKV

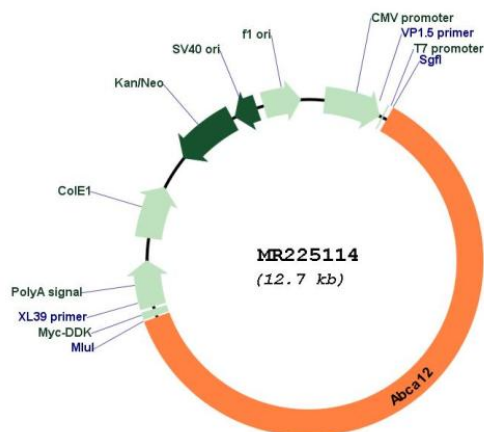
Restriction Sites: SgfI-MluI

Cloning Scheme:

Cloning sites used for ORF Shutting:



* The last codon before the Stop codon of the ORF

Plasmid Map:

ACCN: NM_175210

ORF Size: 7785 bp

OTI Disclaimer: The molecular sequence of this clone aligns with the gene accession number as a point of reference only. However, individual transcript sequences of the same gene can differ through naturally occurring variations (e.g. polymorphisms), each with its own valid existence. This clone is substantially in agreement with the reference, but a complete review of all prevailing variants is recommended prior to use. [More info](#)

OTI Annotation: This clone was engineered to express the complete ORF with an expression tag. Expression varies depending on the nature of the gene.

Components:	The ORF clone is ion-exchange column purified and shipped in a 2D barcoded Matrix tube containing 10ug of transfection-ready, dried plasmid DNA (reconstitute with 100 ul of water).
Reconstitution Method:	<ol style="list-style-type: none">1. Centrifuge at 5,000xg for 5min.2. Carefully open the tube and add 100ul of sterile water to dissolve the DNA.3. Close the tube and incubate for 10 minutes at room temperature.4. Briefly vortex the tube and then do a quick spin (less than 5000xg) to concentrate the liquid at the bottom.5. Store the suspended plasmid at -20°C. The DNA is stable for at least one year from date of shipping when stored at -20°C.
RefSeq:	<u>NM_175210.3</u> , <u>NP_780419.2</u>
RefSeq Size:	8323 bp
RefSeq ORF:	7788 bp
Locus ID:	74591
UniProt ID:	<u>E9Q876</u>
Cytogenetics:	1 C3
MW:	293 kDa
Gene Summary:	Transports lipids such as glucosylceramides from the outer to the inner leaflet of lamellar granules (LGs) membrane, whereby the lipids are finally transported to the keratinocyte periphery via the trans-Golgi network and LGs and released to the apical surface of the granular keratinocytes to form lipid lamellae in the stratum corneum of the epidermis, which is essential for skin barrier function (PubMed:18957418, PubMed:27551807, PubMed:24293640, PubMed:20489143, PubMed:18802465). In the mean time, participates in the transport of the lamellar granules-associated proteolytic enzymes, in turns regulates desquamation and keratinocyte differentiation (PubMed:27551807, PubMed:20489143). Furthermore, is essential for the regulation of cellular cholesterol homeostasis by regulating ABCA1-dependent cholesterol efflux from macrophages through interaction with NR1H2 and ABCA1 (PubMed:18802465, PubMed:23931754). Plays pleiotropic roles in regulating glucose stimulated insulin secretion from beta cells, regulating the morphology and fusion of insulin granules, lipid raft abundance and the actin cytoskeleton (PubMed:32072744). Also involved in lung surfactant biogenesis (PubMed:18632686).[UniProtKB/Swiss-Prot Function]