

## Product datasheet for **MR225100**

### Galns (NM\_001193645) Mouse Tagged ORF Clone

#### Product data:

Product Type:	Expression Plasmids
Product Name:	Galns (NM_001193645) Mouse Tagged ORF Clone
Tag:	Myc-DDK
Symbol:	Galns
Synonyms:	mFLJ00319
Vector:	pCMV6-Entry (PS100001)
E. coli Selection:	Kanamycin (25 ug/mL)
Cell Selection:	Neomycin
ORF Nucleotide Sequence:	>MR225100 representing NM_001193645 Red=Cloning site Blue=ORF Green=Tags(s)

GACGTTGTATACGACTCCTATAGGGCGGCCGGAATTCGTCGACTGGATCCGGTACCGAGGAGATCTGCC  
GCCGGCGCGCC

ATGGCGGCCTGTACCGCAGCCCAGCAGCTGCTGCTGGTACTGAGTGCCCTAGGACTCTTGCCCGCAGGTG  
CTCCGCAGCCCCAACATCGTGTACTGCTCATGGACGATATGGGGTGGGGTACTTGGGTGTGAATGG  
AGAACCTCCAGAGACCCCAAATTTAGACCGGATGGCTGCAGAAGGGATGCTTTTCCCAAGCTTCTAT  
TCTGCCAACCCCTTGTGCTCACCATCTAGGGCAGCCCTGCTCACAGGACGGCTGCCATCCGCAATGGCT  
TCTACACAACCAACGCTCATGCAAGGAATGCTTACACACCTCAGGAGATCATGGGTGGGATCCCTAACTC  
AGAGCACCTCCTGCCGAGCTCCTGAAGAAGGCAGGCTATACCAACAAGATCGTGGGCAAGTGGCATCTG  
GGTCATAGGCCCCAGTTCACCCCTGAAGCATGGATTTGACGAGTGGTTTGGATCTCCCAACTGTCACT  
TTGACCGTATGACAACAAGGCCAAGCCCAACATCCCTGTGTACAGGGACTGGGAGATGGTCGGCAGATT  
TTATGAAGAGTTCCCAATTAACCGGAAGACTGGGAAGCTAACCTCACCCAGCTTACACACAAGAAGCG  
CTGGACTTCATCCAGACACAACATGCAAGGCAGAGCCCTTCTCCTCTACTGGGCCATCGACGCCACTC  
ATGCACCAGTTTACGCTCAAGACAGTTCTTGGCACCAGCCTTCGAGGGCGGTATGGCGATGCTGTTTCG  
GGAAATAGATGACAGTGTGGGAAGATCTTGAGCCTTCTGCAGAACTTGGGCATCAGTAAGAACACATTT  
GTCTTCTTACGTCTGATAATGGTGCAGCCCTCATTCTGCTCCCAACGAAGGTGGCAGCAACGGTCCCT  
TCCTGTGTGGGAAGCAGACGACATTTGAAGCGGGATGAGGGAGCCTGCGATCGCATGGTGGCCAGGACA  
CATTGCTGCAGGCCAGGGCACTGACTTCTGCCCGGGCAGAAGCTCTCAGGAGTTACAACCCACACCCAG  
GAAGAACACACGGAGCTACCCCTGATCTCCACCTGGGACGGGACCCAGGGGAGAGATCCCACTCAGCT  
TCCACAGTGACGAATACCAGGACGCCCTCAGCAGGACCACCCAGGTTGTCCAGGAGCACAAAAGTCCCT  
GGTCCCCGACAGCCCCAGCTCAATGTGTGTAACCAGGCTGTATGAATTGGGCACCCCGAGGCTGTGAA  
AACTAGGGAAGTGTCTGACACCTCCTGAGTCTGTCCCTGAGAAGTGTCTGGGCCAT

ACGCGTACGCGGCCGCTCGAGCAGAAACTCATCTCAGAAGAGGATCTGGCAGCAAATGATATCCTGGATT  
ACAAGGATGACGACGATAAGGTTTAA



**Protein Sequence:** >MR225100 representing NM\_001193645  
Red=Cloning site Green=Tags(s)

MAACTAAQQLLLVLSALGLLAAGAPQPPNIVLLLMDDMGWDLGVNGEPSRETPNLDMAAEGMLFPSFY  
 SANPLCSPSRAALLTGRLP I R N G F Y T T N A H A R N A Y T P Q E I M G G I P N S E H L L P E L L K K A G Y T N K I V G K W H L  
 G H R P Q F H P L K H G F D E W F G S P N C H F G P Y D N K A K P N I P V Y R D W E M V G R F Y E E F P I N R K T G E A N L T Q L Y T Q E A  
 L D F I Q T Q H A R Q S P F F L Y W A I D A T H A P V Y A S R Q F L G T S L R G R Y G D A V R E I D D S V G K I L S L L Q N L G I S K N T F  
 V F F T S D N G A A L I S A P N E G G S N G P F L C G K Q T T F E G M R E P A I A W W P G H I A A G Q G T D F C P G Q N V S G V T T H T Q  
 E E H T E L P L I F H L G R D P G E R F P L S F H S D E Y Q D A L S R T T Q V V Q E H Q K S L V P G Q P L N V C N Q A V M N W A P P G C E  
 K L G K C L T P P E S V P E K C F W A H

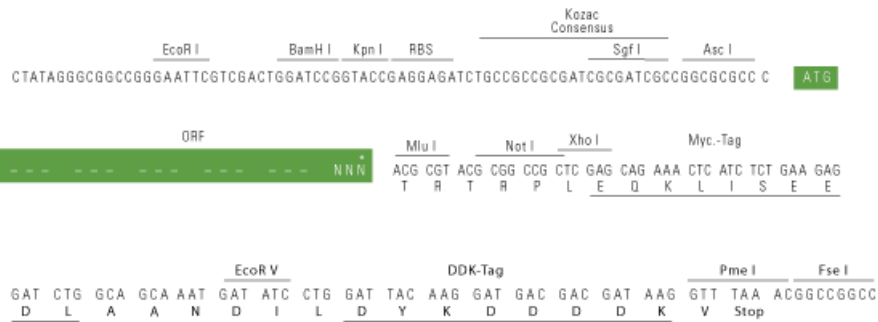
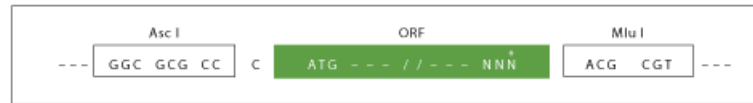
TRTRPLEQKLISEEDLAANDILDYKDDDDKV

**Restriction Sites:**

AscI-MluI

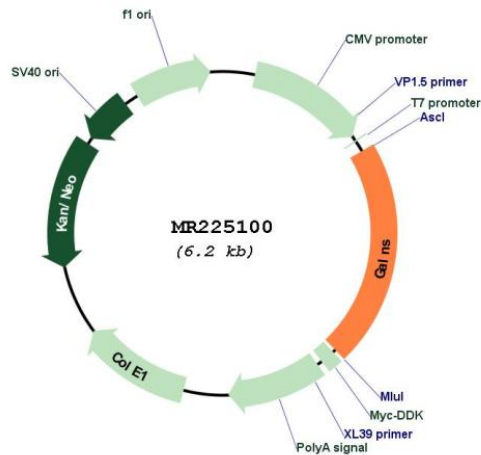
**Cloning Scheme:**

Cloning sites used for ORF Shuttling:



\* The last codon before the Stop codon of the ORF

**Plasmid Map:**



**ACCN:** NM\_001193645

ORF Size:	1320 bp
OTI Disclaimer:	The molecular sequence of this clone aligns with the gene accession number as a point of reference only. However, individual transcript sequences of the same gene can differ through naturally occurring variations (e.g. polymorphisms), each with its own valid existence. This clone is substantially in agreement with the reference, but a complete review of all prevailing variants is recommended prior to use. <a href="#">More info</a>
OTI Annotation:	This clone was engineered to express the complete ORF with an expression tag. Expression varies depending on the nature of the gene.
Components:	The ORF clone is ion-exchange column purified and shipped in a 2D barcoded Matrix tube containing 10ug of transfection-ready, dried plasmid DNA (reconstitute with 100 ul of water).
Reconstitution Method:	<ol style="list-style-type: none"><li>1. Centrifuge at 5,000xg for 5min.</li><li>2. Carefully open the tube and add 100ul of sterile water to dissolve the DNA.</li><li>3. Close the tube and incubate for 10 minutes at room temperature.</li><li>4. Briefly vortex the tube and then do a quick spin (less than 5000xg) to concentrate the liquid at the bottom.</li><li>5. Store the suspended plasmid at -20°C. The DNA is stable for at least one year from date of shipping when stored at -20°C.</li></ol>
RefSeq:	<a href="#">NM_001193645.1</a> , <a href="#">NP_001180574.1</a>
RefSeq Size:	2353 bp
RefSeq ORF:	1323 bp
Locus ID:	50917
UniProt ID:	<a href="#">Q571E4</a>
Cytogenetics:	8 E1
MW:	49 kDa