

Product datasheet for **MR225038**

Lsr (NM_001164185) Mouse Tagged ORF Clone

Product data:

Product Type:	Expression Plasmids
Product Name:	Lsr (NM_001164185) Mouse Tagged ORF Clone
Tag:	Myc-DDK
Symbol:	Lsr
Synonyms:	ILDR3; Lisch7
Vector:	pCMV6-Entry (PS100001)
E. coli Selection:	Kanamycin (25 ug/mL)
Cell Selection:	Neomycin



[View online »](#)

ORF Nucleotide Sequence:

>MR225038 representing NM_001164185
 Red=Cloning site Blue=ORF Green=Tags(s)

TTTTGTAATACGACTCACTATAGGGCGGCCGGGAATTCGTCGACTGGATCCGGTACCGAGGAGATCTGCC
 GCC**CGATCGCC**

ATGGCGCCGGCGCCAGCGCTGTGCTGGGGCCCTGGCTCCCACCCGGCCACCAGATCTTCGTGTGTC
 TTTTCTCATCTTTACTGCCAGACCGTGCCAGTGCCATCCAGGTGACCGTGCCCTGACCCTACCACGT
 AGTGATCCTGTTCCAGCCAGTGACACTACACTGCACTACCAGATGAGCAATACCTCACAGCCCTATC
 GTGATCTGGAAGTATAAGTCGTTCTGTGCGGACCGTGTGCCGACGCCTTCTCCCTGCCAGCGTGGACA
 ACCAGCTCAACGCCAGCTGGCGGTGGCAACCCCGGCTACAACCCCTATGTGGAGTGCCAGGACAGCGT
 ACGCACTGTCAAGGTGGTGGCCACCAACAGGGCAATGCTGTGACCTGGGAGACTACTACCAGGCGAG
 AGAATCACCATCACAGGAAATGCTGACCTGACCTTCGAGCAGACGGCCTGGGAGACAGTGGAGTGTATT
 ACTGCTCCGTGGTCTCAGCCCAAGATCTGGATGGGAACAACGAGGCGTACGCAGAGCTCATTGTCCTTGT
 TTATGCTGCTGGCAAAGCAGCCACCTCAGGTGTCCAAGCATCTATGCCCCAGCATCTATACCCACCTC
 TCTCTGCCAAGACTCCGCCACCTCCGCTGCCATGATCCCATGCGTCCCTCCCTATGGGTACCCCTGGAG
 ACTTTGACAGGACCAGCTCAGTTGGTGGCCACAGCTCCCAGGTGCCCTGCTGCGTGAAGTGGATGGGAG
 CGTATCTTCAAGTACGAAGTGGTACAGGATCCAGGCTAACAGCAAGATGACTCCATGAGGGTCCCTA
 TACTATATGGAGAAGGAGCTAGCCAACCTTCGATCCTTCCCGCCCTGGCCCTCCCAATGGCCGAGTGGAA
 GGGCCATGAGTGAAGTAACTCCCTCCATGAAGATGACTGGCGATCTCGGCTTCCAGGGCTCCTGCCCT
 CACCCCATCAGGGATGAGGAGTGAATCGCCACTCCCCTCGGAGTCCAGAACATGGGAGCAGGAACCC
 CTTCAAGAACAGCCAAGGGTGGTTGGGGTCTGGGCGCCCTCGGCCCCGCTCTGTGGATGCTCTAGATG
 ACATCAACCGGCTGGTCCACTGAATCAGGAAGTCTTCTCCCCAAGTAGTGGAGCAGAGAGGCGGGC
 CTATGCACCTCCGAGAAGTCGACGCGGGATGACCTCTATGACCCCGACGATCCTAGAGACTTGCCACAT
 TCCCGAGATCCCCTACTTATGATGATTTGAGGTCTAGGGATCCACGTGCTGACCCAGATCCCCTCAGC
 GATCCCACGATCCTCGGGATGCTGGCTTCAAGTACGGGACCCTCAGTATGATGGGCGACTCTTAGAAGA
 GGCTTTAAAGAAAAAGGGGCTGGGAGAGAAGACGCGTTTACAGGGAGGAAGAAGAAGAAGAGGAG
 GGCCACTATCCCCAGCACCTCCGCTTACTCTGAGACTGACTCGCAGGCTCGAGGGAGCGGAGGATGA
 AAAAGAATTTGGCCCTGAGTCGGGAAAGTTTAGTCGTC

AG**CGGACCG**ACGCGTACGCGGCCGCTCGAGCAGAACTCATCTCAGAAGAGGATCTGGCAGCAAATGATATCC
 TGGATTACAAGGATGACGACGATAAGGTTTAA

Protein Sequence:

>MR225038 representing NM_001164185
 Red=Cloning site Green=Tags(s)

MAPAASACAGAPGSHPATTFVCLFLIIYCPDRASAIQVTVDPYHVILFQPVTLHCTYQMSNTLTAPI
 VIWKYKSFCDRVDADFSPASVDNQLNAQLAAGNPGYNPYVEQCDSVRTVRVATKQNAVTLGDYYQGR
 RITITGNADLTFEQTAWGD SGVYYCSVSAQDL DGNNEAYAELIVLVYAAGKAATSGVPSIYAPSIYTHL
 SPAKTPPPPPAMIPMRPPYGYPGDFDRTSSVGGHSSQVPLLREVDGVSSEVRSYRIQANQQDDSMRVL
 YYMEKELANFDPSRPGPPNGRVERAMSEVTS LHEDDWSRPSRAPALTPIRDEEWNRHSPRSPRTWEQEP
 LQEQPRGGWGSGRPRARSVDALDDINRPGSTESGRSSPPSSGRGRAYAPPRSRSDLLYDPPDPRDLPH
 SRDPHYDDLRSRDPADPRSRQRSHDPRDAGFRSRDPQYDGRLLLEEALKKKGAGERRRVYREEEEEEE
 GHYPPAPPYSETDSQASRERRMKKNLALSRESLVV

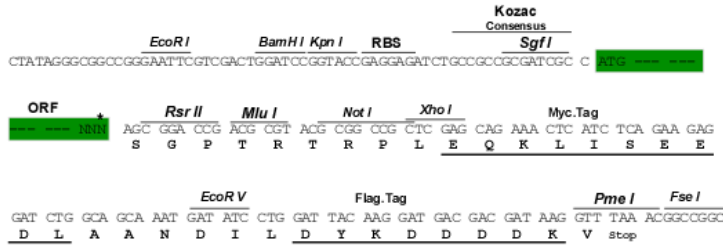
SGPTRRRLE**QKLI**SEEDLAANDILDYKDDDDK**V**

Restriction Sites:

SgfI-RsrII

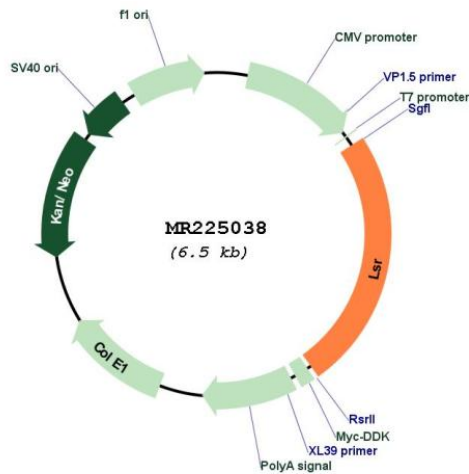
Cloning Scheme:

Cloning sites used for ORF Shuttling:



* The last codon before the Stop codon of the ORF

Plasmid Map:



ACCN:	NM_001164185
ORF Size:	1578 bp
OTI Disclaimer:	The molecular sequence of this clone aligns with the gene accession number as a point of reference only. However, individual transcript sequences of the same gene can differ through naturally occurring variations (e.g. polymorphisms), each with its own valid existence. This clone is substantially in agreement with the reference, but a complete review of all prevailing variants is recommended prior to use. More info
OTI Annotation:	This clone was engineered to express the complete ORF with an expression tag. Expression varies depending on the nature of the gene.
Components:	The ORF clone is ion-exchange column purified and shipped in a 2D barcoded Matrix tube containing 10ug of transfection-ready, dried plasmid DNA (reconstitute with 100 ul of water).
Reconstitution Method:	<ol style="list-style-type: none">1. Centrifuge at 5,000xg for 5min.2. Carefully open the tube and add 100ul of sterile water to dissolve the DNA.3. Close the tube and incubate for 10 minutes at room temperature.4. Briefly vortex the tube and then do a quick spin (less than 5000xg) to concentrate the liquid at the bottom.5. Store the suspended plasmid at -20°C. The DNA is stable for at least one year from date of shipping when stored at -20°C.
RefSeq:	NM_001164185.1 , NP_001157657.1
RefSeq Size:	1973 bp
RefSeq ORF:	1581 bp
Locus ID:	54135
UniProt ID:	Q99KG5
Cytogenetics:	7 B1
MW:	59.1 kDa
Gene Summary:	Probable role in the clearance of triglyceride-rich lipoprotein from blood. Binds chylomicrons, LDL and VLDL in presence of free fatty acids and allows their subsequent uptake in the cells (By similarity).[UniProtKB/Swiss-Prot Function]