

Product datasheet for MR224993

Pnkd (NM_001039509) Mouse Tagged ORF Clone

Product data:

Product Type:	Expression Plasmids
Product Name:	Pnkd (NM_001039509) Mouse Tagged ORF Clone
Tag:	Myc-DDK
Symbol:	Pnkd
Synonyms:	2210013N15Rik; 2810403H05Rik; AI854243; Brp17; MNCb-5687; MR-1; Tahccp2
Mammalian Cell Selection:	Neomycin
Vector:	pCMV6-Entry (PS100001)
E. coli Selection:	Kanamycin (25 ug/mL)
ORF Nucleotide Sequence:	>MR224993 representing NM_001039509 Red=Cloning site Blue=ORF Green=Tags(s)

TTTTGTAATACGACTCACTATAGGGCGGCCGGAATTCGTCGACTGGATCCGGTACCGAGGAGATCTGCC
GCCCGCATCGCC

ATGGCGCGGTGGTAGCTGCTACGGCGCTGAAGGGCCGGGGGCGAGAAATGCCCGCTCCTCCGGGGGA
TCCTCTCTGGAGCCACAGCTAACAAAGGCTTCCCAGAACAGGACCAGAGCACTGCAGAGCCACAGCTCACC
AGAATGCAAGGAGGAGCCCGAGCCCTCTCCCCTGAGCTAGAATACATCCAGAAAGAGGGCAAGAAC
CCCATGAAAGCCGTGGGGCTAGCCTGGTATAGCCTGTACACCCGAACCTGGCTTGGGTACCTCTTCTACC
GACAGCAGCTTCGGAGGGCTCGGAATCGCTATCCCAAAGGCCACTCCAAAACCTCAGCCCCGCTCTTCAA
TGGAGTGAAGGTGCTTCCCATCCCTGTCCTCTCGGACAACCTACAGCTACCTCATCATCGACACCCAGGCT
GGGCTGGCAGTGGCTGTGGACCCCTCAGACCCGAGGGCTGTGCAGGCTTCCATTGAAAAGGAAAGAGTTA
ACTTGGTTGCCATTCTCTGCACCCACAAGCACTGGGACCACAGTGGAGGGAAACCGTGACCTCAGCCGGCG
GCACAGGGACTGTCGAGTGTATGGGAGCCCTCAGGATGGTATCCCTACCTCACCACCCCTGTGTGAT
CAAGATGTGGTCAGCGTGGGACGACTTCAGATTCGAGCCCTAGCCACCCCTGGCCACACTCAAGGCCATC
TGGTCTACCTGCTGGATGGGAGCCCTACAAGGTCCTTCTGCCTCTTCTCAGGGGACCTGCTCTTCTCT
CTCTGGCTGTGGACGGACCTTCGAAGGCACAGCGGAGACCATGCTGAGCTCACTGGACACTGTGTTAGAC
CTGGGGATGACACCCCTGCTGTGGCCTGGGCATGAATACGAGAAGAGAACCTGGGCTTTCAGGGCTGG
TGGAGCCCGAGAACTTGGCTCGTGAGAGGAAGATGCAGTGGGTACAGAGGCAACGGATGGAACGCAAGAG
CACATGCCATCCACCCTGGGAGAGGAACGCGCCTACAACCCATTCTGAGAACCATTGCTGGAACATA
CAGGAGGCTCTGGGGCCAGGGCCAGGCCACCAGTGATGACGGCTGCTCCCGGGCCAGCTCCTGGAGG
AGCTGCGCCGCTGAAGGACATGCATAAAAGCAAG

ACGCGTACGCGGCCGCTCGAGCAGAACTCATCTCAGAAGAGGATCTGGCAGCAATGATATCCTGGATT
ACAAGGATGACGACGATAAGGTTTAA



[View online »](#)

Protein Sequence: >MR224993 representing NM_001039509
 Red=Cloning site Green=Tags(s)

MAAVVAATALKGRGARNARVLRGILSGATANKASQNRTRALQSHSSPECKEEPEPLSPELEYIPRKRKGN
 PMKAVGLAWYSLYTRTWLGYLFYRQQLRRARNRYPKGHSKTQPRLFNGVKVLPPIVLSDNYSYLIIDTQA
 GLAVAVDPSPRAVQASIEKERVNLVAIILCTHKHWDHSGGNRDLRRHRDCRVYQSPQDGIPYLTHPLCH
 QDVVSVGRLQIRALATPGHTQGHLYLLDGEPIYKGPSCFLSGDLLFLSGCGRTFEGTAETMLSSLDTVLD
 LGDDTLWPGEYAEENLGFAGVVEPENLARERKMQWVQRQRMERKSTCPSTLGEERAYNPFLRTHCLEL
 QEALGPGPGPTSDDGCSRAQLLEELRRLKDMHKSK

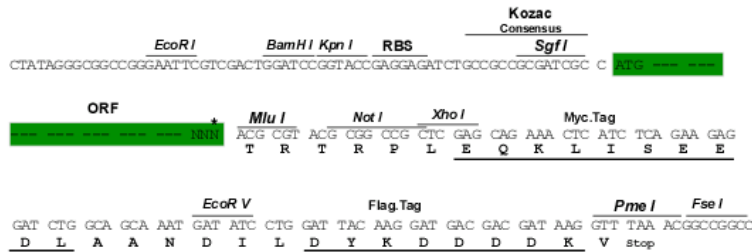
TRTRPLEQKLISEEDLAANDILDYKDDDDKV

Restriction Sites:

SgfI-MluI

Cloning Scheme:

Cloning sites used for ORF Shuttling:



* The last codon before the Stop codon of the ORF

ACCN: NM_001039509

ORF Size: 1155 bp

OTI Disclaimer: The molecular sequence of this clone aligns with the gene accession number as a point of reference only. However, individual transcript sequences of the same gene can differ through naturally occurring variations (e.g. polymorphisms), each with its own valid existence. This clone is substantially in agreement with the reference, but a complete review of all prevailing variants is recommended prior to use. [More info](#)

OTI Annotation: This clone was engineered to express the complete ORF with an expression tag. Expression varies depending on the nature of the gene.

Components: The ORF clone is ion-exchange column purified and shipped in a 2D barcoded Matrix tube containing 10ug of transfection-ready, dried plasmid DNA (reconstitute with 100 ul of water).

Reconstitution Method:

1. Centrifuge at 5,000xg for 5min.
2. Carefully open the tube and add 100ul of sterile water to dissolve the DNA.
3. Close the tube and incubate for 10 minutes at room temperature.
4. Briefly vortex the tube and then do a quick spin (less than 5000xg) to concentrate the liquid at the bottom.
5. Store the suspended plasmid at -20°C. The DNA is stable for at least one year from date of shipping when stored at -20°C.

RefSeq: [NM_001039509.1](#), [NP_001034598.1](#)

RefSeq Size: 2956 bp

RefSeq ORF: 1158 bp

Locus ID: 56695

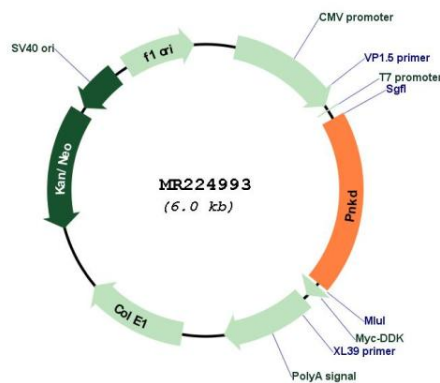
UniProt ID: [Q69ZP3](#)

Cytogenetics: 1 C3

MW: 43.5 kDa

Gene Summary: Probable hydrolase that plays an aggravative role in the development of cardiac hypertrophy via activation of the NF-kappa-B signaling pathway.[UniProtKB/Swiss-Prot Function]

Product images:



Circular map for MR224993