

## Product datasheet for **MR224983**

### **Dmrta1 (NM\_175647) Mouse Tagged ORF Clone**

#### **Product data:**

Product Type:	Expression Plasmids
Product Name:	Dmrta1 (NM_175647) Mouse Tagged ORF Clone
Tag:	Myc-DDK
Symbol:	Dmrta1
Synonyms:	Dmrt4
Mammalian Cell Selection:	Neomycin
Vector:	pCMV6-Entry (PS100001)
E. coli Selection:	Kanamycin (25 ug/mL)



[View online »](#)

**ORF Nucleotide Sequence:**

>MR224983 representing NM\_175647  
 Red=Cloning site Blue=ORF Green=Tags(s)

CTATAGGGCGGCCGGAATTCGTCGACTGGATCCGGTACCGAGGAGATCTGCC  
 GCC**CGCATCGCC**

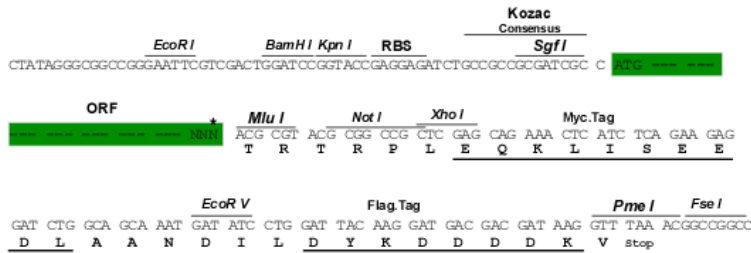
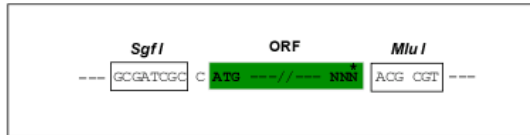
ATGGAGCGATTACCTCACGGTCGTAGAGACCCAGCGCGCGGTGCCGACCCCATCTGCCCCAGGGCGGG  
 CTGCTGCGCCCGTTTCGCGCCGCGCGGTCCGTGTGTCGCGGGATTCCGGTGTCCGCGACTTTCCTGCGGCC  
 GCCTGGCCTTTTTCTGCGATCGACCCGAAGCTCCGGTCGCGCAGGATGCGCTCCGGGCCCTGGGCTGGAT  
 AGGGCGTTGGGGCGGTAGGCTGCGGCTACCCGCGGACCCGAAGTGCAGCGCGTGTGCAACCATGGCG  
 TGGTGTACAGCGCTCAAGGGCCACAAGCGCTTTCGCCGCTGGCGGGACTGCGCGTGTGCCAAGTGCACCT  
 GATCGCCGAGCGGACGCTGTATGGCCGCGCAGGTGGCCCTGCGCAGGCAGCAGGCGCAGGAGGAGAGC  
 GAGGCCCGCGGGTGCACAGGCTTCTGTACCAGGGTTCGCGGGTCCGGGGCTCAGGCTCCGGGGGCA  
 GCGGCAGGACCGAGAGTCCCAGGCTTGAATAACCCCATGGCTGTAGCTGTTCTGGGAGCGGGTGCCTC  
 TAGACACCTGGGAGCCGGTCAGTCCCAACTTTCGAGTTTTCCAGCAAGATTATGCTGACAGAAAGCAG  
 GAACAAAACAGAGAAACTGTGAGTCATGCCAGAGTAGACAGGAAGAACCAGTCTCCAACACTCATCACC  
 ATTCTCTGGGATCATCTAAGGTAATGTGACCGTGGAGAAACAGGGCTTCATGTCATCTATTCCAGAACA  
 CCCAGACAAAATCCACCATCATCTGTCTCTTGCACCGGATCAATCGGGAGGAGAAGACAGTCCCAGG  
 TCTTTCTCTCTCTGACCTGGAATCAGGGAATGAAAGCGAGTGGGCCAGAGACTACATTGCTACCAGAG  
 CCAGCCTTTCACGGTGACCTCAAGACCACGAGACCTCTCGGAATCTTACCAGGATCTTTCAGGTTA  
 CAAGCGTAGCCGCTAGAAGGCATTCTACAGTTCGCAAGGGAGATGTAGTCCAAGCTATTGAACAGATC  
 TTAATGGGAGAGAACATAAACCAGACTGCAGGGACCTAGCACGCGCAGACTTGGAAAATGCAGCCTTTC  
 AGAGACGCTCAGATTTTAGTCTTGGCTGGCATTGGCTTTGGGACTAAGTAATAAATCAGTCTCTCTCC  
 TCTTGAAGCTGCGTCTGCTGCTTATGGAGGAGATTCAACTCTCTACAGTTTCAATCCTAGACTAGCTTTC  
 AGCCCACTGCGCTGGCATTCTTCTCCAGGAAGAGCGCTGTCTGGTTTTGTGCACCCTACCTAACAC  
 CTGGACTGGTCCAGCATTGCCTTTTCGGCAACTTTGGATTATGCGTTTCCAGGGATGATTAGGGAGCC  
 GTCCACCTCCCTAGCAAGCACTTAGTAGCTGGTGGTAGACTGTATTTCCAGGCCAATCAGGAGCATCTG

**ACGCGTACGCGGCCGCTCGAGCAGAAACTCATCTCTGAAGAGGATCTGGCAGCAATGATATCTGGATT  
 ACAAGGATGACGACGATAAGGTTTAA**

**Restriction Sites:  
 Cloning Scheme:**

**Sgfl-MluI**

Cloning sites used for ORF Shuttling:



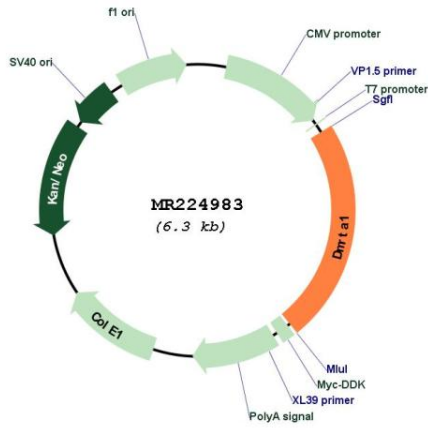
\* The last codon before the Stop codon of the ORF

**ACCN:**

**NM\_175647**

<b>ORF Size:</b>	1470 bp
<b>OTI Disclaimer:</b>	The molecular sequence of this clone aligns with the gene accession number as a point of reference only. However, individual transcript sequences of the same gene can differ through naturally occurring variations (e.g. polymorphisms), each with its own valid existence. This clone is substantially in agreement with the reference, but a complete review of all prevailing variants is recommended prior to use. <a href="#">More info</a>
<b>OTI Annotation:</b>	This clone was engineered to express the complete ORF with an expression tag. Expression varies depending on the nature of the gene.
<b>Components:</b>	The ORF clone is ion-exchange column purified and shipped in a 2D barcoded Matrix tube containing 10ug of transfection-ready, dried plasmid DNA (reconstitute with 100 ul of water).
<b>Reconstitution Method:</b>	<ol style="list-style-type: none"><li>1. Centrifuge at 5,000xg for 5min.</li><li>2. Carefully open the tube and add 100ul of sterile water to dissolve the DNA.</li><li>3. Close the tube and incubate for 10 minutes at room temperature.</li><li>4. Briefly vortex the tube and then do a quick spin (less than 5000xg) to concentrate the liquid at the bottom.</li><li>5. Store the suspended plasmid at -20°C. The DNA is stable for at least one year from date of shipping when stored at -20°C.</li></ol>
<b>RefSeq:</b>	<a href="#">NM_175647.1</a> , <a href="#">NM_175647.2</a> , <a href="#">NM_175647.3</a> , <a href="#">NP_783578.1</a>
<b>RefSeq Size:</b>	4073 bp
<b>RefSeq ORF:</b>	1473 bp
<b>Locus ID:</b>	242523
<b>UniProt ID:</b>	<a href="#">Q8CFG4</a>
<b>Cytogenetics:</b>	4 C4
<b>MW:</b>	53.1 kDa

Product images:



Circular map for MR224983