

Product datasheet for MR224981

Nwd1 (NM_176940) Mouse Tagged ORF Clone

Product data:

Product Type:	Expression Plasmids
Product Name:	Nwd1 (NM_176940) Mouse Tagged ORF Clone
Tag:	Myc-DDK
Symbol:	Nwd1
Synonyms:	A230063L24Rik
Mammalian Cell Selection:	Neomycin
Vector:	pCMV6-Entry (PS100001)
E. coli Selection:	Kanamycin (25 ug/mL)
ORF Nucleotide Sequence:	>MR224981 representing NM_176940 Red=Cloning site Blue=ORF Green=Tags(s)

TTTTGTAATACGACTCACTATAGGGCGCCGGGAATTCGTCGACTGGATCCGGTACCGAGGAGATCTGCC
GCC**CGATCGCC**

ATGGACACAGAGCGAGAAGCCCTGCAGTGCACAGCCTACCCTGAGGTTTCAGAGCTTCTGCCAAAGGCACG
GCTTGGCGTTTGAGGTGGTTGATCTGAGGTGGGTATTCCGAATACGCAGGCCACTGACTACCTGACCAC
GGAAGCTCTGCTTAGAAGAACTGGAGCGCTGTCAGAAAACATCCATAGGACCAGCTTTTGTGGCCCTCCTG
GGTGACCAGTACGGCCCTGCCCGTTCGCCGGAGGATTGAGGAAAAGGAGTGGGAGGCACTAAGAGCTC
AGCTGACCTCCAGGCCTCGAGATCTGGAGCTGGTGACCAGACATTTCCAGAGAGACGACAACACCATTCC
TCCAACCTACGCTTTCAGCCTTCAGGCTCACTGGTGGTCCCAGGGCCTGAGGAGCCACCTTAACCTCT
GTCCTGAGAGGTGGAGCCAGGAGGCCTGGAGGCTAGGCCTCATCAGCCAGGAGCAATGGATGTGCTATC
ACCGATCAGTTATTGAGTGGGAGATCGAGCTTGGCCTACTGAGCTCAGCAAGAGGGGACCAGGGAGCTAC
CGTCTTCTGAGAGATGTACAGGACCTCAATAACACATCTTGGATGATTGCTCTCTGAAGATGGTGGAT
CGGCTGGTAGATGGCTGCCTGGATACCAATGCCAGAGTCTTCTCAGTGGTCTTAAAGGGCGCATACTAG
ATGCTCAGCCTGGAGCCCTAAAGTCCCACCACCTGTCTGGAGCCGAGACCTGGTCAACCCCAAGAACA
GGCTCACGCTCGTTACCTAAAGCAGTTGAGCGAGCAGTTCGTGGCCAGGACCAACCATCAGTCCCTGGAG
CAGCTTCGAGAGCTGGAGTTGGCCAGACAGGAGCTGGTGGCTCTACCAAGAGATCCGCCACCACCTCT
GGCAGAGCACAGAGTCTACCAAGGTCTTCTGCGGCCACCAGGAGCTCTGGCCAGCTCAGGCAGCAGCT
CAGACAGGATGAGAGCCGGACACATACTCCCTTGGTTCTCTTGGACCACCAGGCATCGGGAAGACCTCT
CTCATGTGCAAGCTAGCCAGCAGGTACCAGAGCTACTTGGCCACAAGACAGTGGTTGTCTGAGGCTGC
TAGGGACATCAAAGCTGAGCCTGGATGCCCGCAGCCTCCTCAGGAGCCTGTCTTCCAAGTGTGCTTGGC
ATATGGGCTGCCACTGCCCCAGCCAGGTCTGGAGGCCACAGCAGGGTGGGCCATTTCTCCATACT
CTCCTCCACACCGTGTACAGAGGAACTTTGAGTCCCTGGTGTGCTCCTGGACTCCGTGGATGACCTGG
ACTCCATATGCCATTCTCCGAGGTCTCTTGGCTGCCCTCAAGTGTCTCCAAGGTGCACCTCATCTCT
CTTACATGCTCAGGCCAGCAGGTTTTACATAACCTGCAACAGACCTCAAGACCCAGCAGCTACTGG



[View online »](#)

GAGGTGAAGGCCCTGTCTGGAAGTCAAGGCCAGGAGTTTCATACAGCTGCTGCTGGCTGCAGAGAAGAGGA
TGCTGAGCCCGGGTCAGAGAGATGTCTCTGGGCCAGCCTCCCAGAGTGTGGCCACCCAGGGAGGCTAAG
GCTGGCCTTTGAGGAGGCCCGGAAGTGGGCCTCCTTCACTGTGCCAGTGCCTTGGCCACTACAGCAGAG
GAAGCCACACACCAGCTCTGTATACGCCTGGAGGAGACACATGGGGCACTGCTGGTGGCTCATGTACTGG
GCTATATTGTGTCTTCCAGGTACGGTCTCTCAGAAGCAGAGCTGAAGGATGTGTTGTCTTTGGATGATGA
AGTCTTGCAGGCTGTGTACCGGGACTGGACCCACCTAGCAAAGAGCTGCTGCGCTTCCC GCCCTGTCTG
TGGTCCGGCTCCGCCGGGACTGGGACACTGCCTAGTCAGGAGGCCCGTGGATGGCTGCATGCTACTGG
CCATTGCACACAGACAGCTGTCCAGGTAATCCAAGTTCGATATCTGTCTGGGCCTGAGAGAGCCAAGAG
GCATGGCGTGCTAGCTGAATTCTTCTCTGGAGCCTGGAGCCAGGGATCAAGAACTTATCACCCCTGCCG
CTTGTAGGGAAGCCCTGAACCTGGACCGCAAGGTGGCCACAGCCACTGTGGTTCTCAAGCACAGTGG
CCAACCTGAGGAAGCTGACCGAAGTGCCTTCCATCTGCTGCATGCAGGCCGCTTGGAGGAGTTGAAGCA
GGAGGTTCTGGGGAACATGAGTTGGATCTCATGTCCGGGCATCTCTGGAGCATTGAGGTCTGCTGGAT
GATTTTGACATGTGTGCCCTCACATGAACTCTCCTGAGGTTGATCTGGTTAGAGAAGCCATCCAGCTGT
GTGGCCCTGCTGTGGAGCTCCGGGGCTGGAGAAGAGCGTCTATACCCGAGCTCCTGGCCAGACTCCT
TTTCTTTGCTGCATCACATCCAGCAATGATCGGACAAGTGTGCCAACAAGCCAGAGCTGGTTCCGTGCC
TGCCCTACCCAATGCTGGTGCCTGGCAGGATTCTGACAGCCACCTGGTGGACCTCTTCGAGCCACTC
TACTGGGTGTCACAAAGGCATCACCGCATAGCATGGAGCCTGGAGGAGAACTCCTGGTGGTGGGCAC
CCAGGATGGTGCCATGGTCGTGTGGGACGTGGAGGAACAACAGGTGGTACACGTTCTAATGGGACACACA
GCTGAAGTGAAGTGTGTGCGAGTGTGGCCCAAGGGACTCTTGCATCTGTCATCAAAGGACCATACCC
TGCGTCTGTGGAGTCTGCTTCCGGCCAGGAGAAAAGTCAACATTTGGATGGAGGGTCAAAAATCCAC
AGAGCCCCAGAGTTGGGACCTTCATGTGGATGAGAGAAAACATGTTGTATACTCGACATCTGGTGAAGG
ATCAACATGTGGAATCTGAAAACCTCGAAGCTGGTTTTCTGTATCACAGGAGATGTGTGATCCCTGGG
TCTGTGTGGCTTTGTTGGCTGCCAGGTTTTGCTGCTGCCCTGTCCAAGGGTGGCCAGGTCATGCTGTG
GAGCTCAGCCATGGGAAAACCTGCAGGAGAAAACACCAAGTTATCCAGCATCAAAGAAGAGACACCCACTGT
GCCGTCTCCATCCAGTCCCGGGCAAGGCTGGTCCGCTGGCTTACGACAGTGGCTCCATTGCCCTGGTCTCCG
CTGGAGAAGACAGGCTGCTGGAGAAGCTCCCAGAAGCTGTGGGGTTCTGGTGGTTTCTGAAGACGATTC
CCTTCTGTGGCAGGCTTTGGAAGATTTGTGCGGATTTTCTTGGCTGACTCGCAAGGCTTCCACCGGTTT
ATGGCTTCGGATCTGGAACACGAGGACATGGTGGAGACAGCAGTCTTGGTCTGAGAACAATCTGATCA
TCACAGGGTCCCGGATGCACTTATCCAGGTCTGGGATCTCAAGTCCACTAAGAAGCTGCAGTCTCCGAC
TCCATTTCTGGACCGCACCGCCTCGCTGCAGTGTCCACCATGGCAGCTTTGTCTACTTCCCTAAGGTT
GGGACAAAAACAAGTCACAATTTGGGACTTGGCAGAAGGTGAGGAGCAAGATTGCCTGGACACGTCCA
ATGAGGTCCGCTGTCTGGAGGTGCCGAGCAGGCCAAGCTCCTTTCACAGGCCTGGTTTCTGGGATCGT
GCTTGTGTTCCCCCTGAATTCAGGCAAGATGACTGTGCATCCCCCACCTGAGGCACGCAAAGCTGTC
AACTGCATGTCCCTGAGCAAGAGTGAGAATCGTCTGGCCATTGCCTATGACAACATTGCTCCTGGTCTTG
ACATCAGCCCTGGGGACCCATGTCCGGCCATTGAAGGCCCCACCTACACCTTTTACACCCAGCTGCCTGA
GACCATAGTGAGTGTGGCTGTCTGGCTGACTATCGTGTGGTCTACGGCATGAGCGATGGCAGCCTTTC
CTGTACGACTGTGCATGCTCTAAAGTGTCCCTCTGGAGGCCATGGGAGCAGGGTGAAGTGTGATGAGG
TCAGCCACAGTGAGCAGCTAGCAGTGAAGTGAAGTGAAGTGAAGTGAAGTGAAGTGAAGTGAAGTGAAGT
TTGCAGGGGGATGTTTCGAGATGAGCTATGAGAAGTCTGCTGTCAGAGGGGTGCGGTGCTGCTTCTCC
AGGGATGACAAGCATGTATTTGAGGCATGGAGGACCGCTCTGCTACTGCCTGGAGCAGGTGGATGGCA
CTCTTTTGGCTGTCCAGTTTGTTCATGCTGTGATCAACCGAATCATCCCTACCTCCAATGGCTTTCATGGC
CCCCACAAGCCACGGCTATCTCATCCGTGAGCGCTTCCAGTGCCCGTCAGTCAGAGCCTCCAGCAAGAC
CCTCTCAAGAAGTCAAGAAGGCAGTGTGGCTGGTAAAGACCAGGCAGAGGGAAGAGCTGGCTGCAGCAG
AAGCCTCCAGGATGCAGAACCAGTGGCCGTAGAGGGAAGGAATCAAAGTCAAATAAACGCTCACAGGT
CTGCCTCATACTC

ACGCGTACGCGGCCGCTCGAGCAGAAAACCTCATCTCAGAAGAGGATCTGGCAGCAAATGATATCCTGGATT
ACAAGGATGACGACGATAAGGTTTAA

Protein Sequence: >MR224981 representing NM_176940
 Red=Cloning site Green=Tags(s)

MDTEREALQCTAYPEVQSFQCRHGLAFEVVDLRWGIPTQATDYLTTELCEELERCQKTSIGPAFVALL
 GDQYGPCVPVRRIEEKEWEALRAQLTSRPRDELVTRHFQRDDNTIPPTYVLQPSGSLVVPGPPEATLTS
 VLRGGAQEAWRLGLISQEQWMCYHRSVIEWEIELGLLSSARGDQGATVFLRDVQDLNKHILDDCSLKMVD
 RLVLDGCLDTNAQSLLSGLKGRILDAQPGALKSHHL SWSRDLVNPKNKAHARYLKQLSEQFVARTNHQVLE
 QLRELELARQELGWL YQEIRHHLWQSTESTKVF CGHQELLAQLRQQLRQDESRTHTPLVLF GPPGIGKTS
 LMCKLAQQVPELLGHKT VVVLRL LGTSKLSLDARSLRSLSFQVCLAYGLPLPPAQVLEAHSRVGHFFHT
 LLHTVSQRNFESLVLLLDSDVDDLDSICHSPRVSWLPLKCPVRVHLILSTCSGQQVLHNLQQLTKDPSTYW
 EVKALSGSQGQEF IQLLLAAEKRMLSPGQRDVLWASLPECGHGRLRLAFEEARKWASFTVPVPLATTAE
 EATHQLCIRLEETHGALLVAHVLYIVSSRYGLSEAELKDVLSL DDEVLQAVYRDWTPPSKELLRFPPLL
 WVRLRDLGHCLVRRPVDGCMMLAIAHRQLSQVIQVRYL SGPERAKRHGVLAEFFSGAWSQGIKKLITLP
 LVGKPLNLDKRVAPQPLWFSSTVANLRKLTLPFHLLHAGRLEELKQEV LGNMSWISCRGISGGIEVLLD
 DFDMCAPHMNSPEVDLVREAIQLCGPAVELRGLKSVLYTELLARLLFFAASHPAMIGQLCQQAQSWFRA
 CPYPMLVPLAGFLQPPGGPLRATLTGCHKGITAIAWSLEEKLLV VGTQDGAMVVVDVEEQVVHVLMGHT
 AEVKCVRVFAQGTLAISASKDHTLRWLSLLSGQEKVTILDGGSQNPTPEQSWDLHVDERNNVVYSTSGAR
 INMWNLETSKLVFCITGDVSDPWCVALLAAQGLLLALSKGGQVSLWSSAMGKLQEKHQLSSIKEETPTC
 AVSIQSRARLVAGFSSGSIALVSAGEDRLLEKLP EAVGFLVSEDDSLLVAGFGRFVRIFLADSQGFHRF
 MASDLEHEDMVETAVLGPENNLITGSRDALIQVWDLKSTKKLQSPFPFLDRTGLAAVSHHGSFVYFPKV
 GDKNKVTIWDLAEGEEQDCLDTSNEVRCLEVAEQALLFTGLVSGIVLVFPLNSRQDVL CIPPPEARAV
 NCMSLSKSENRLAIAYDNIVLVLDISPGDPCPAIEGPTYFTYQLPETIVSVAVLADYRVVYGMSDGSLF
 LYDCACSKVFPLEAHGSRVSCVEVSHSEQLAVSGAEDALLCLWDLQACRGMFEMS YENSCCRGVRCAQFS
 RDDKHVFAAGMEDRSVTAWSTVDGTL LAVQFVHAVINRIIPTSNFGMAPTSHGYLIRERFQCP SVRASQDD
 PLKNFKKAWLVKTRQREELAAAEASQDAEPVAVEGKESKSNKRSQVCLIL

TRTRPLEQKLISEEDLAANDILDYKDDDDKV

Chromatograms: https://cdn.origene.com/chromatograms/mm9104_e08.zip

Restriction Sites: SgfI-MluI

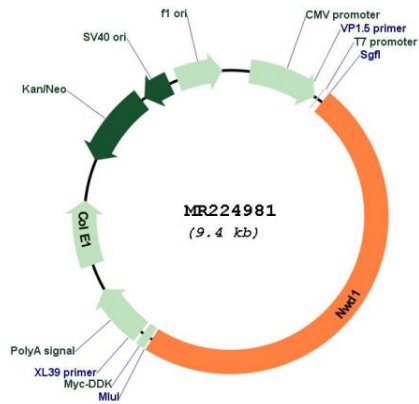
Cloning Scheme:



ACCN: NM_176940

ORF Size:	4563 bp
OTI Disclaimer:	The molecular sequence of this clone aligns with the gene accession number as a point of reference only. However, individual transcript sequences of the same gene can differ through naturally occurring variations (e.g. polymorphisms), each with its own valid existence. This clone is substantially in agreement with the reference, but a complete review of all prevailing variants is recommended prior to use. More info
OTI Annotation:	This clone was engineered to express the complete ORF with an expression tag. Expression varies depending on the nature of the gene.
Components:	The ORF clone is ion-exchange column purified and shipped in a 2D barcoded Matrix tube containing 10ug of transfection-ready, dried plasmid DNA (reconstitute with 100 ul of water).
Reconstitution Method:	<ol style="list-style-type: none">1. Centrifuge at 5,000xg for 5min.2. Carefully open the tube and add 100ul of sterile water to dissolve the DNA.3. Close the tube and incubate for 10 minutes at room temperature.4. Briefly vortex the tube and then do a quick spin (less than 5000xg) to concentrate the liquid at the bottom.5. Store the suspended plasmid at -20°C. The DNA is stable for at least one year from date of shipping when stored at -20°C.
RefSeq:	NM_176940.5 , NP_795914.3
RefSeq Size:	7732 bp
RefSeq ORF:	4566 bp
Locus ID:	319555
Cytogenetics:	8 B3.3
MW:	169 kDa
Gene Summary:	May play a role in the control of androgen receptor (AR) protein steady-state levels. [UniProtKB/Swiss-Prot Function]

Product images:



Circular map for MR224981