

## Product datasheet for **MR224964**

### **Clcn4 (NM\_011334) Mouse Tagged ORF Clone**

#### **Product data:**

Product Type:	Expression Plasmids
Product Name:	Clcn4 (NM_011334) Mouse Tagged ORF Clone
Tag:	Myc-DDK
Symbol:	Clcn4
Synonyms:	cIC-4; Clc4-2; Clcn4-2
Mammalian Cell Selection:	Neomycin
Vector:	pCMV6-Entry (PS100001)
E. coli Selection:	Kanamycin (25 ug/mL)



[View online »](#)

ORF Nucleotide  
Sequence:

>MR224964 representing NM\_011334  
 Red=Cloning site Blue=ORF Green=Tags(s)

TTTTGTAATACGACTCACTATAGGGCGGCCGGAATTCGTCGACTGGATCCGGTACCGAGGAGATCTGCC  
 GCCCGCATCGCC

ATGGACTTCTCGAGGAGCCCTTCCTGACGTGGGGACCTACGAGGACTCCACACCATAGACTGGCTGA  
 GGGAAAAGTCCCGGATACCGACAGACATAGGAAGATCACCAGCAAAAGTAAGGAGTCTATTTGGGAGTT  
 CATCAAGAGCCTGCTGGACGCGTGGTGGGATGGTGGTACTACTATTGGGCTGCTGGCAGGTACC  
 TTGGCTGGAGTCACTCGATCTCGCTGTGGATTGGATGACGGACCTCAAGGAGGGGGTCTGTCTGCCGAT  
 TCTGGTACAGCCATGAACAGTGTGTTGGACCTCAACGAGACCCTTTTGGAGCAGGGACAAGTGTCC  
 CCTGTGGCAGAAGTGGTCAAGCTTCTTCTGAGCCAGTCAAGGGCGCCAGCGCTTACATTCTGAATTAC  
 TTAATGTACATTCTATGGGCGTTGCTGTTTGCATTTCTGGCTGTCTCCCTGGTACGTGTGTTCCGACCGT  
 ATGCCTGTGGCTCTGGCATAACCGAGATAAAGACTATTTTGGTGGCTTTATCATCAGGGGATACTGGG  
 GAAATGGACTCTTCTAATCAAGACTGTCAACCTCGTGTGCTCGTATCCTCTGGCCTGAGCCTTGGCAA  
 GAGGGCCACTGGTGCATGTGGCATGTTGCTGTGGCAACTTCTTCAAGCAGCCTTTTCTCCAAGTATAGCA  
 AGAATGAAGGCAAGAGGCGTGGGTGCTTTCAGCTGCAGCTGCTGCTGGTGTCTCTGTGGCCTTTGGTGC  
 TCCGATAGGAGGTGTGCTCTTCACTCTAGAGGAGTCACTTACTACTTTCCCTTGGAAAACCTTGTGGAGG  
 TCATTCTTTGACGCCCTGGTGGCTGCCTTCACTGCGCTCCATCAACCCCTTTGGAAAATAGCCGCTGG  
 TTCTCTTTTATGTGGAGTATCATACCCCTGGTACATGGCTGAACCTTCCCTTTTATCTCTGCTTGGAGT  
 CTTTGGGGTTTATGGGGAACCTTTCACACGCTGCAACATTGCTTGGTGCAGGAGGCGTAAGACCACC  
 AGGCTGGGAGGTACCCAGTGTGGAGGTTATTGCGGTGACAGCCGTACCCGCTCGTGGCCTACCCCA  
 ATCCCTACACTCGCCAGAGCAGTGTGAGCTCATCTGAGCTTCAACGATTGTGGGCTCTCGAGTC  
 TTCTCAGCTCTGTGACTACATCAACGACCCCAACATGACTCGGCCTGTGGATGACATTCGGACCGGCCG  
 GCTGGGTTGGAGTTTACACAGCCATGTGGCAGCTGGCCTTGGCACTGATCTTCAAAATAGTCACTACTA  
 TATTTACCTTTGGCATGAAGATTCCTCAGGTCTTTCATCCCCAGTATGGCTGTGCGAGCCATGGCAGG  
 CCGGATGGTGGGAATCGGTGTGGAGCAGCTGGCTACCATCACCATGACTGGATCATCTTCAAGAACTGG  
 TGCAGGCCTGGAGCGGACTGTGTACACCAGGGCTTTATGCGATGGTGGGAGCTGCAGCCTGTCTAGGTG  
 GGGTACTAGGATGACAGTGTCTAGTGGTCAATATGTTTGAAGTACTGGAGGCTGGAGTATATTGT  
 ACCCTGATGGCAGCTGTGTACACAGCAAGTGGTGGCTGATGCCTTTGGGAAAGAAGGGATTTATGAA  
 GCCCATCCATCTGAATGGGTACCCATTTCTTGTATGTGAAGGATGAGTTCACCCACCGTACGCTGGCCA  
 CTGATGTGATGCGGCCCGGAGGGGAGAACCGCCATTATCGGTACTAACCAGGACAGCATGACTGTGGA  
 GGACGTGGAGACTCTCATCAAGGAGACAGACTACAACGGCTTTCTGTGCTCGTCTCCAGAGACTCGGAG  
 CGTCTCATCGGGTTTGGCCAGAGGGGGAGCTAATCTTGGCTATAAAAAATGCCAGGCAGAGGCAAGAGG  
 GCATTGTGAGCAATTCATCATGTACTTACAGAGGAGCCTCTGAGCTGCCTGCCAACAGCCCACATCC  
 ACTGAAGCTGAGGCGCATTTTGAACCTGAGCCCTTTCACGGTACAGATCACACCCCATGGAGACGGTG  
 GTGGACATTTCCGAAACTGGGCTCCGACAAATGCCTGGTACACGGAGTGGGAGACTTCTTGGGATCA  
 TCACAAAAAAGGATGTTCTGAGACACATGGCCAGATGGCAAACCAGGACCCTGAATCCATCATGTTTAA  
 T

ACCGGCCGCTCGAGCAGAACTCATCTCAGAAGAGGATCTGGCAGCAAATGATATCCTGGA  
 TTACAAGGATGACGACGATAAGGTTTAA

**Protein Sequence:** >MR224964 representing NM\_011334  
 Red=Cloning site Green=Tags(s)

MDFLEEPFPDVGTYEDFHTIDWLREKSRDTRHRKITSKSKESIWEFIKSLDDAWSGWVVMLLIGLLAGT  
 LAGVIDLAVDWMTDLKEGVCLSAFWYSHEQCCWTSNETTFEDRDKCPLWQKWESELLLSQSEGASAYILNY  
 LMYILWALLFAFLAVSLVRVFAPYACGSGIPEIKTILSGFIIRGYLGKWTLLIKTVTLVLVSSGLSLGK  
 EGPLVHVACCCGNFFSSLF SKYSKNEGRREVL SAAAAAGVSVAFGAPIGGVLFSL EEVSYFPLKTLWR  
 SFFAALVAFTLRSINPFGNSRLVLFYVEYHTPWYMAELFPFILLGVFGGLWGTLFTRCNIAWCRRRKTT  
 RLG RYPVLEVI AVTAVTAIVAYPNPYTRQSTSELI SELFNDCGALESSQLCDYINDPNMTRPVDDIPDRP  
 AGVGVYTAMWQLALALIFKIVITIFTFGMKIPSGLFIPSMAVGAMAGRMVGIGVEQLAYHHHDWIIFRNW  
 CRPGADCVTPGLYAMVGAACLGGVTRMTVSLVIMFELTGGLEYIVPLMAAAVTSKWWADAFGKEGIYE  
 AHIHLNGYPFLDVKDEFTHRTLATDVMRPRRGEPLSVLTQDSMTVEDVETLIKETDYNGFPVLVSRDSE  
 RLIGFAQRRELILA IKNARQRQEGIVSNSIMYFTEEPPELPANSPHPLKLRILNLSPFTVDHTPMETV  
 VDIRKLGRLRQCLVTRSGRLGIITKKDVLRHMAQMANQDPESIMFN

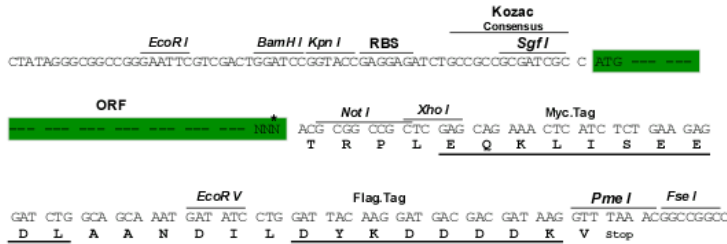
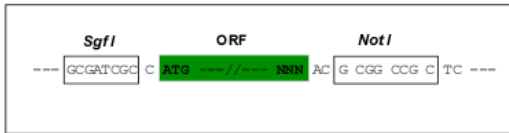
TRPLEQKLI SEEDLAANDILDYKDDDDKV

**Chromatograms:** [https://cdn.origene.com/chromatograms/mm9027\\_e02.zip](https://cdn.origene.com/chromatograms/mm9027_e02.zip)

**Restriction Sites:** SgfI-NotI

**Cloning Scheme:**

Cloning sites used for ORF Shuttling:



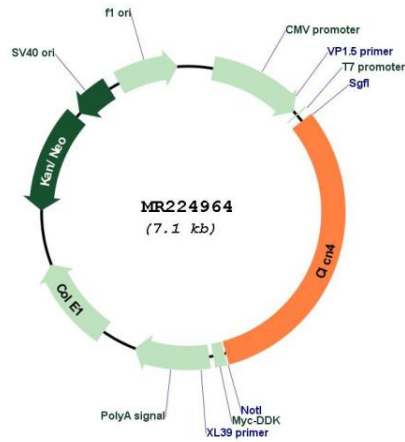
\* The last codon before the Stop codon of the ORF

**ACCN:** NM\_011334

**ORF Size:** 2241 bp

<b>OTI Disclaimer:</b>	<p>Due to the inherent nature of this plasmid, standard methods to replicate additional amounts of DNA in E. coli are highly likely to result in mutations and/or rearrangements. Therefore, OriGene does not guarantee the capability to replicate this plasmid DNA. Additional amounts of DNA can be purchased from OriGene with batch-specific, full-sequence verification at a reduced cost. Please contact our customer care team at <a href="mailto:custsupport@origene.com">custsupport@origene.com</a> or by calling 301.340.3188 option 3 for pricing and delivery.</p> <p>The molecular sequence of this clone aligns with the gene accession number as a point of reference only. However, individual transcript sequences of the same gene can differ through naturally occurring variations (e.g. polymorphisms), each with its own valid existence. This clone is substantially in agreement with the reference, but a complete review of all prevailing variants is recommended prior to use. <a href="#">More info</a></p>
<b>OTI Annotation:</b>	<p>This clone was engineered to express the complete ORF with an expression tag. Expression varies depending on the nature of the gene.</p>
<b>Components:</b>	<p>The ORF clone is ion-exchange column purified and shipped in a 2D barcoded Matrix tube containing 10ug of transfection-ready, dried plasmid DNA (reconstitute with 100 ul of water).</p>
<b>Reconstitution Method:</b>	<ol style="list-style-type: none"><li>1. Centrifuge at 5,000xg for 5min.</li><li>2. Carefully open the tube and add 100ul of sterile water to dissolve the DNA.</li><li>3. Close the tube and incubate for 10 minutes at room temperature.</li><li>4. Briefly vortex the tube and then do a quick spin (less than 5000xg) to concentrate the liquid at the bottom.</li><li>5. Store the suspended plasmid at -20°C. The DNA is stable for at least one year from date of shipping when stored at -20°C.</li></ol>
<b>RefSeq:</b>	<p><a href="#">NM_011334.4</a>, <a href="#">NP_035464.3</a></p>
<b>RefSeq Size:</b>	<p>4620 bp</p>
<b>RefSeq ORF:</b>	<p>2244 bp</p>
<b>Locus ID:</b>	<p>12727</p>
<b>UniProt ID:</b>	<p><a href="#">Q61418</a></p>
<b>Cytogenetics:</b>	<p>7 4.23 cM</p>
<b>MW:</b>	<p>84.2 kDa</p>
<b>Gene Summary:</b>	<p>Proton-coupled chloride transporter. Functions as antiport system and exchanges chloride ions against protons (By similarity).[UniProtKB/Swiss-Prot Function]</p>

Product images:



Circular map for MR224964