

Product datasheet for MR224945

Pde3a (NM_018779) Mouse Tagged ORF Clone

Product data:

Product Type:	Expression Plasmids
Product Name:	Pde3a (NM_018779) Mouse Tagged ORF Clone
Tag:	Myc-DDK
Symbol:	Pde3a
Synonyms:	A930022O17Rik; C87899
Mammalian Cell Selection:	Neomycin
Vector:	pCMV6-Entry (PS100001)
E. coli Selection:	Kanamycin (25 ug/mL)
ORF Nucleotide Sequence:	>MR224945 ORF sequence Red=Cloning site Blue=ORF Green=Tags(s)

TTTTGTAATACGACTCACTATAGGGCGGCCGGGAATTCGTCGACTGGATCCGGTACCGAGGAGATCTGCC
GCC**CGATCGCC**

ATGGCAGTGGGGGGGAGGCCGCCAAGACCTAGCCAAGCCGGGCTCGGAGGGGCGAGTCCCGCCCGTG
TGGCAAGAGGGAACCCGCCATCGTGGCGAGTCTCTCCATCCCCTCGGGGCTCCGGCTGTTGTTGGAG
AGCCCTGGCGCTGCAGCCGCTCCGGCGCTCGCCTCAACTCTCTCGGCGTGTGCGGGGCTCCCTGTCC
GTGCTGCTGGCGCTGCTGGTGGGCTGGTCCGGCGGGAGGTCCGAGGCGAGCTGGAGAAGAGTCAGGAGG
CGGCGGCCGAGGAGGAGGAGGAAGGAGCCCGAGGGGGCGTCTCCCGGGCCCTCGGGGAGGTGCTCC
CGGGGGCGGCGCAGCTCAGCCCTGGCTGCAGCCGGCCGCGCTGCTCTCAGTCTCCTGTGCGCCTTC
TTCTGGATGGGCTTGTGCTGCTGCGCGCCGGGTGCGCCTGCCTCTGGCCGTGCGCTGTTGGCCGCT
GCTGCGCCGGGAAGCGCTGGTGCAGCTCTCCTGGGCGTGGGGACGGTGCCTGCTGTGCTGCCCGC
CGCGGGGGTCTGCTCAGCTGCCAGGTGGCGGACATGGCTGGTGTGAGGCTGAGGCTGGGCGTCCCTC
ATGGTGCCTGGACTAGCGTGTAGGACGGTGGCCCTGGTTTCTCTGGAGAGTTCAAGTGCCTGGA
GACCTTACCTGGCATACTGGCGCCGTGCTTGGGCTGCTGTGCCAGGTACGCCGAGCAGATCCTGCC
GCAGTCTCCGGCCGGCTCCGCCAGGGAGCGGTTGGGTCCCAGTTGAGCGCAGGACCAAGGAAGAG
ATCCGGGTGGAAGAGGAGGAGCGGTCCAGCTCGGTGGTGGCCGCGAGATGTCGGCTGCAGTGGCA
AGTCTCACCGGAGGACCTCCCTGCCTGCATACCCAGGGAGCAGCTCATGGCCATTGAGAAATGGGACCA
CAAGAGAGGGCCACGAGGATCCCAGTCAGGAACAGCATCACTGTGGATATTGCTGTGATGGGTGAGGCC
CATGGCCTCATTACCGACCTCCTGGCCGACCTTCTCTGCCCCGAATGTGTGTACATCCTTGAGGGCCG
TAAGCAACTTGTCTCAGCACCCAGCTCACCTTCCAGGCCATCCACAAGCCAGAGTGAACCCACCGTGAC
CTTCAGTGAGAATACTGCTCGACTCTGAGGAAGGCTTGGAGAAAGACAAGCAGGCCATTTCCAAG
CGCCTGAGAAGAAGTTTGCTCCAGGCTTACTGAGAAGAGTCTCGTCAACTTGGACAACCTACCACCTCTG
CCACAGGTCTGCCACCTTGGAGCCTGCCAGTGGGAGGGACCGCAGTGCCAGCATAAAGCCGACGA
AGCCCTTACCCAGTGTGTAATCCTGACTCTTGAATGCCCGAGGGTTGACGACTCTACCAAAAGC



[View online »](#)

AGATCCTTCACTTCATCCTATGCTGTCTCTGCAGCTAACCATGTAAAAGCTAAAAAGCAAAACAGGCCAG
GTGGCCTTGCTAAAATTTCCCGCTCCCTCACCTCCTCCTCGCTCCCAGGGATCACCTGCCAGCAG
TCCTGTGACGAACAGTGTTCACAACAGTTCACAGAATCCCTGAAGTAACCATCAAGCGAGGGCCTGGA
TCTCACAGGGCCTTAACCTACACCCAAAGTGCCCTGACCTGTCCCTCAGATCCCACCCCGTCTGTCA
TATGTAGCAGCTGTGGCAGACCTTATTCGCAAGGAATCCTGTGATGGACCCTCAGAGAGAAGTGGCC
AGCCATGCTGAAACCAACAGAACAGATGACACTTCTCAAGTTACCTCCGATTATGAGACCAACAACAAC
AGTGACAGCAGTGACATTCTGCAGAATGAAGAGGAAGCTGAGTGCCAGAGAGAACCCAGAGGAAAGCAT
CGGCTTGTGGCACCTATACTTCCAGACCATGATCTTCTGGACAAACCAATTCTTGCTCCAGAACCCT
GGTCATGGATAACCTGGACTCAATTATGGATCAGTTGAACACCTGGAATTTTCCAATTTTGATTTAATG
GAAAATATAGGAAGAAAATGTGGCCGATTCTGAGCCAGGTATCATAACAGACTGTTTGAAGACATGGGGC
TCTTTGAAGCCTTTAAAATCCCGGTTAGGGAGTTTATGAATTACTTTTCATGCTTTGGAGATCGGATAACG
GGACATTCCTTATCATAACAGAATCCATGCCACCGATGTTCTACACGCTGTGTGGTATCTCACAACACAG
CCGATTCTGGCCTCCCAAGTGTGATTGGTGATCACGGCTCAGCAAGCGACTCCGATTCTGACAGTGGAT
TTACACACGGACACATGGGATATGTGTTTTCAAAAATGTATCACGTGCCAGATGACAAAATATGGATGCCT
GTCTGGGAATATCCAGCCCTAGAGTTGATGGCTCTGTACGTTGCTGCAGCCATGCATGACTACGATCAC
CCAGGGAGGACAAATGCCTTCTGGTTGCCACTAGTGCCCTCAGGCGGTGCTATACAACGACCGTTCTG
TTCTGGAGAACCATCACGCCGCTGCAGCCTGGAATCTCTTCATGTCCCGCCAGAGTATAACTTCTTAGT
TAACCTGGACCACGTGGAATTAAGCACTTCCGCTTCTAGTCATTGAAGCGATTTTGGCTACTGACCTG
AAGAAACACTTTGACTTTGTAGCCAAATTTAACGCCAAGGTAACGATGATGTCGGGATAGATTGGACCA
ATGAAAACGACCGTCTCCTGGTGTGCAGATGTGTATAAAGCTGGCTGACATCAACGGCCCTGCTAAATG
CAAAGAACTCCACCTGCGGTGGACAGAGGGCATCGCCAGCGAGTTTTATGAGCAGGGCGATGAAGAAGCC
AGCCTCGGCTTGCCATAAGTCCCTTTATGGACCGCTCTGCCCGCAGCTGGCCAATCTTCAGGAATCCT
TTATCTCACACATCGTGGTCTCTCTGCCACTCCTATGACTCTGCGGGACTCATGCCAGGAAAATGGGT
AGATGACAGTGATGATTCGGAGACACCGATGACCCGGAAGAAGAGGAGGAAGAGGCTGAAACACCACAC
GAGGACGAAGCCTGTGAAAGCAGTATAGCTCCCGAAAAGAAAAGTTTCAAAGAAGGAGAATCTACTGCC
AAATAACTCAGCACCTTCTGCAGAACACATGATGTGGAAGAAAGTATTGAAGAGGAACAGTGTTTATC
AGGCACAGAGAACCAGTCCCTGGACCAGGTCCCTCTGCAGCATCCCTCAGAGCAGATCCAGGCTATCAAG
GAGGAAGAGGAAGAGAAGGGGAAGCCAAGAGCAGAGGAGACCCTGGCTCCACAGCCAGACCTG

ACGCGTACGCGGCCGCTCGAGCAGAAACTCATCTCAGAAGAGGATCTGGCAGCAATGATATCCTGGATT
ACAAGGATGACGACGATAAGGTTTAA

Protein Sequence: >MR224945 protein sequence
 Red=Cloning site Green=Tags(s)

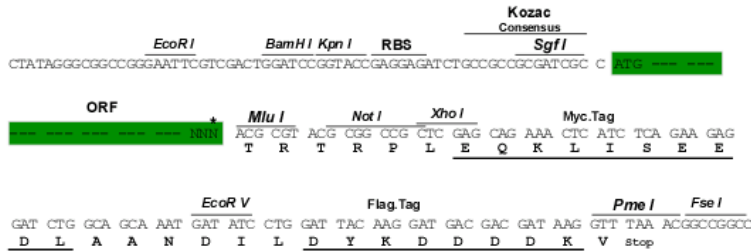
```

MAVRGEEAQLAKPGLGGASPARVARGNHRHRGESSPPRGSGCCWRALALQPLRRSPQLSSALCAGLSL
VLLALLVRLVGGEVGGELKESQEAEEEEEEEGARGGVFPGRGGAPGGGAQLSPWLQPAALLFSLLCAF
FWMGLCLLRAGVRLPLAVALLAACCAGEALVQLSLGVGDGRLLSLPAAGVLLSCLGGATWVLRRLRGLV
MVAWTSVLRRTVALVSLERFKVAWRPYLAYLAAVLGLLLARYAEQILPQCSGPAPPRERFGSQLSARTKEE
IPGWKRRRRSSSVVAGEMSGCSGKSHRRTSLPCIPREQLMGHSEWDHKRGRGRGSQSGTSITVDIAVMGEA
HGLITDLLADPSLPPNVCTSLRAVSNLLSTQLTFQAIHKPRVNPVTVTFSENYTCSDEEGLEKDKQAISK
RLRRSLPPGLLRVSSTWTTTTSATGLPTLEPAPVRRDRSASIKPHEAPSPAVNPDSWNPGLTTLTKS
RSFTSSYAVSAANHVKAKKQNRPGGLAKISPVSPSSSPPQGSPASSPVSNSASQFPESPEVTIKRGGP
SHRALTYQSAPDLSPQIPPPSVICSSCGRPYSQGNPADGPSERSGPAMLKPNRTDDTSQVTSQVYETNNN
SDSSDILQNEEEAECQREPQRKASACGTYTSQTMIFLDKPI LAPEPLVMDNLDSDIMDQLNTWNFPFDLM
ENIGRKCGRILSQVSYRLFEDMGLFEAFKIPVREFMNYFHALEIGYRDIPYHNRIHATDVLHAVWYLTTQ
PIPLGPSVIGDHGSASDSDSGFTHGHMGYVFSKMYHVPDDKYGCLSGNIPALELMALYVAAAMHDYDH
PGRTNFLVATSAPQAVLYNDRSVLENHAAAANL FMSRPEYNFLVNLDHVEFKHFRFLVIEAILATDL
KKHFDVAKFNAKVNDVGDWTNENDRLLVCQMCIKLADINGPAKCKELHLRWTEGIASEFYEQGDEEA
SLGLPISPMDRSAPQLANLQESFISHIVGPLCHSYDSAGLMPGKWVDDSDSDGTDDEEEEEEAETPH
EDEACCESSIAPRKKSFKRRRIYQITQHLLQNMMWKKVIEEEQCLSGTENQSLDQVPLQHPSEQIQAIK
EEEEEGKPRAEETLAPQPD
  
```

TRTRPLEQKLISEEDLAANDILDYKDDDDKV

Restriction Sites: SgfI-MluI
Cloning Scheme:

Cloning sites used for ORF Shuttling:



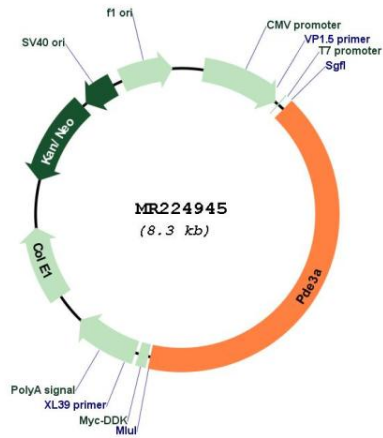
* The last codon before the Stop codon of the ORF

ACCN: NM_018779

ORF Size: 3426 bp

OTI Disclaimer:	The molecular sequence of this clone aligns with the gene accession number as a point of reference only. However, individual transcript sequences of the same gene can differ through naturally occurring variations (e.g. polymorphisms), each with its own valid existence. This clone is substantially in agreement with the reference, but a complete review of all prevailing variants is recommended prior to use. More info
OTI Annotation:	This clone was engineered to express the complete ORF with an expression tag. Expression varies depending on the nature of the gene.
Components:	The ORF clone is ion-exchange column purified and shipped in a 2D barcoded Matrix tube containing 10ug of transfection-ready, dried plasmid DNA (reconstitute with 100 ul of water).
Reconstitution Method:	<ol style="list-style-type: none">1. Centrifuge at 5,000xg for 5min.2. Carefully open the tube and add 100ul of sterile water to dissolve the DNA.3. Close the tube and incubate for 10 minutes at room temperature.4. Briefly vortex the tube and then do a quick spin (less than 5000xg) to concentrate the liquid at the bottom.5. Store the suspended plasmid at -20°C. The DNA is stable for at least one year from date of shipping when stored at -20°C.
RefSeq:	NM_018779.2
RefSeq Size:	4205 bp
RefSeq ORF:	3426 bp
Locus ID:	54611
UniProt ID:	Q9Z0X4
Cytogenetics:	6 G2
MW:	124.5 kDa
Gene Summary:	Cyclic nucleotide phosphodiesterase with a dual-specificity for the second messengers cAMP and cGMP, which are key regulators of many important physiological processes. Involved in oocyte maturation.[UniProtKB/Swiss-Prot Function]

Product images:



Circular map for MR224945