

Product datasheet for MR224925

Slc9a3r2 (NM_023449) Mouse Tagged ORF Clone

Product data:

Product Type:	Expression Plasmids
Product Name:	Slc9a3r2 (NM_023449) Mouse Tagged ORF Clone
Tag:	Myc-DDK
Symbol:	Slc9a3r2
Synonyms:	0610011L07Rik; 1200011K07Rik; 2010007A20Rik; E3karp; NHERF-2; Nherf2; Octs2; Sip-1
Mammalian Cell Selection:	Neomycin
Vector:	pCMV6-Entry (PS100001)
E. coli Selection:	Kanamycin (25 ug/mL)
ORF Nucleotide Sequence:	>MR224925 ORF sequence Red=Cloning site Blue=ORF Green=Tags(s)

TTTTGTAATACGACTCACTATAGGGCGGCCGGAATTCGTCGACTGGATCCGGTACCGAGGAGATCTGCC
GCCCGATCGCC

ATGGCTCGCTCCAGGACTAGCATGCTGCCTGCCTCAGCCCCAGGAGCCCCTCCTGTGAACTCTCAACTGG
GGCTTACTCAGGATGTCAATGGGCCCCAAGAGAGCTGCGTCCCCGGCTCTGCCACTTGCGAAGGGGACC
CCAGGGCTACGGGTTCAACCTGCATAGTGACAAGTCCCGGCTGGCCAGTACATCCGCTCTGTGGACCT
GGCTCTCCTGCTTCTCACTCTGGCCTCCGTGCCAGGATCGGCTCATTGAGGTGAATGGGCAGAACGTGG
AGGGGCTGCGACATGCCGAGTTGTGCCAGAATCAAGGCACAGGAGGACGAGGCCCGGCTGCTGGTAGT
CGATCCTGAGACTGATGAACACTTCAAGCGTTGAGGGTCATACCCACTGAGGAACATGTAGAAGGTCCA
CTGCCATCACCAGTCACGAACGGGACCAGTCTGCCAGCTCAATGGTGGCTCTGTGTGCTCATCCCGAA
GTGACCTGCCAGGCTCAGAGAAGGACAATGAGGATGGCAGTACCTGGAAGCGAGACCCCTCCAGGAAAAG
TGGCCTCCACCTGAGTCCCACAGCAGCTGAGGCCAAGGAGAAGGCTCGAGCTACTCGGGTCAACAAGCGG
GCACCACAGATGGACTGGAACCGGAAGCGAGAGATCTTCAGCAACTTC

ACGCGTACGCGGGCCGCTCGAGCAGAACTCATCTCAGAAGAGGATCTGGCAGCAATGATATCCTGGATT
ACAAGGATGACGACGATAAGGTTTAA



[View online »](#)

Protein Sequence: >MR224925 protein sequence
Red=Cloning site Green=Tags(s)

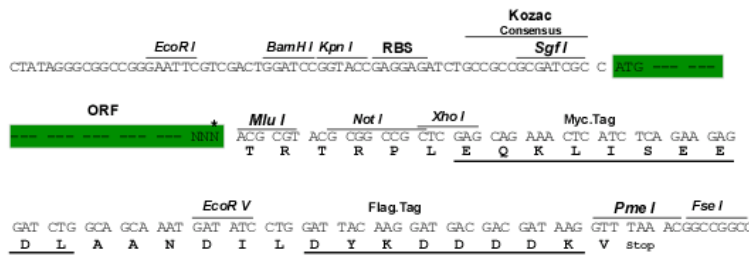
MARSRTSMLPASAPGAPPVNSQLGLTQDVNGPPRELRPRLCHLRRGPQGYGFNLHSDKSRPGQYIRSVDP
 GSPASHGLRAQDRLIEVNGQNVEGLRHAEVVARIKAQEDEARLLVDPETDEHFKRLRVIPTEEHVEGP
 LPSPVTNGTSPAQLNGGSVCSSRSDLPGSEKDNEGSTWKRDPFQESGLHLSPATAAEAKEKARATRVNKR
 APQMDWNRKREIFS

TRTRPLEQKLISEEDLAANDILDYKDDDDKV

Restriction Sites: Sgfl-MluI

Cloning Scheme:

Cloning sites used for ORF Shuttling:



ACCN: NM_023449

ORF Size: 681 bp

OTI Disclaimer: The molecular sequence of this clone aligns with the gene accession number as a point of reference only. However, individual transcript sequences of the same gene can differ through naturally occurring variations (e.g. polymorphisms), each with its own valid existence. This clone is substantially in agreement with the reference, but a complete review of all prevailing variants is recommended prior to use. [More info](#)

OTI Annotation: This clone was engineered to express the complete ORF with an expression tag. Expression varies depending on the nature of the gene.

Components: The ORF clone is ion-exchange column purified and shipped in a 2D barcoded Matrix tube containing 10ug of transfection-ready, dried plasmid DNA (reconstitute with 100 ul of water).

Reconstitution Method:

1. Centrifuge at 5,000xg for 5min.
2. Carefully open the tube and add 100ul of sterile water to dissolve the DNA.
3. Close the tube and incubate for 10 minutes at room temperature.
4. Briefly vortex the tube and then do a quick spin (less than 5000xg) to concentrate the liquid at the bottom.
5. Store the suspended plasmid at -20°C. The DNA is stable for at least one year from date of shipping when stored at -20°C.

RefSeq: [NM_023449.3](#), [NP_075938.2](#)

RefSeq Size: 1688 bp

RefSeq ORF: 681 bp

Locus ID: 65962

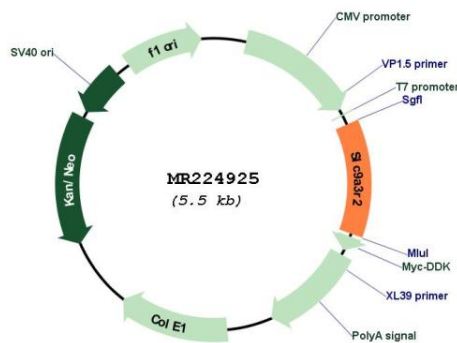
UniProt ID: [Q9JHL1](#)

Cytogenetics: 17 A3.3

MW: 24.9 kDa

Gene Summary: Scaffold protein that connects plasma membrane proteins with members of the ezrin/moesin/radixin family and thereby helps to link them to the actin cytoskeleton and to regulate their surface expression. Necessary for cAMP-mediated phosphorylation and inhibition of SLC9A3. May also act as scaffold protein in the nucleus (By similarity). [UniProtKB/Swiss-Prot Function]

Product images:



Circular map for MR224925