

## Product datasheet for MR224906

### Iqsec3 (NM\_001033354) Mouse Tagged ORF Clone

#### Product data:

**Product Type:** Expression Plasmids  
**Product Name:** Iqsec3 (NM\_001033354) Mouse Tagged ORF Clone  
**Tag:** Myc-DDK  
**Symbol:** Iqsec3  
**Synonyms:** AK122446; BRAG3; mKIAA1110; synarfGEF  
**Mammalian Cell Selection:** Neomycin  
**Vector:** pCMV6-Entry (PS100001)  
**E. coli Selection:** Kanamycin (25 ug/mL)  
**ORF Nucleotide Sequence:** >MR224906 representing NM\_001033354  
 Red=Cloning site Blue=ORF Green=Tags(s)

TTTTGTAATACGACTCACTATAGGGCGGCCGGAATTCGTCGACTGGATCCGGTACCGAGGAGATCTGCC  
 GCC**CGATCGCC**

ATGGAGAGCCTGCTGGAGAACCCTGGCGCCGCTGCTACCTCAAGGAGCTCACGGCCATCGTGCAGA  
 ACCAGCAAAGCCTCATCCATACCCAGCGCCAGCGCATCGATGAGCTGGAGCGCGCTAGACGAGCTGAG  
 CGCGGAGAACCAGCCTGTGGGAACACCAGCAGTTGCTGCAAGCCAGCCTCCGCTGGGCTGGTCCC  
 CCGCCCGCTGCCCCACTGCCTGCTCCTGCAGTCACTGCTCCGGCCCGCTGCGGCCAGGAACCGC  
 TTCAGGACCACGGACAGCTCATACCCGTTCCAGGAGCCGCTTCCAGCACCAGGTCAGCTCCTGGC  
 GCAGCCCCAACCTGCACCCAGCAGCAGGGTTCCAGACTCCTCAGTCCGCCACCAGCACCCGGTGGCACC  
 GGGCCATAGCTGACAAGGAGAAGGAGCGTCCCTCGAGTTGTTGTGCTGCCGCGGAGCCCTGCTTCAAC  
 ACGCATCCCCCGCCCTCGGCAAGGGCGTCTGAGCAGGAGACCCGAGAATGAGACTGTGCTACACCA  
 ATTCTGTGCCCTGCCGCTGACACCGAGCAGAAGCCTGCCTGCTCCGACCTGGCTTCCAAAGTGATGGC  
 TCCTGTGCCAGGCGGTGGGGCATGGAGACTCCGTGGTGGCAGCGGTGGCAGCCGCGCAGACCCAGTG  
 CCCATGCCCGAAGGCTCAAGCCCCGAGCTACAGCAGGAGGAGGAGCGGCCAGGGGCGTGGGCTCCCC  
 ACGGCTGGCCCCCTCCGCGCGGCTCTCCTGGCCGCGCAGCAGCTGCCCTGGCAGCGGCTGCTGCC  
 CACTCCTGCTGCCCTCCGAATACGAACCTCCCTTGACCTAAAGAATAAACAGATTGAAATGCTAGAAC  
 ACAAAATACGGGGCCACCTGGTATCCCGAGCGCCGCGTGCACCATTAACCCGCTTTTCGCCAGTACCA  
 GCTCAGCAAGAATTTGAGAAGATCCGTAACCTCGCTCCTGGAGAGCCGCTGCTCGGCGGATCTACTG  
 CGCAAGGTGAGGGCGCCACAGCGGAGAGTCTGGTGGCAGAGAAGGCGCTCCTGGAGGGCTGTGGCTCC  
 TTGGGCTCCCGCTGGGGCGCTCGCCCTCGCTGCCGCCACCTTCGCTGGCTCGCTCACCGAGCTGGAGGA  
 CTCCTTACCAGCAGGTGCAGTCCCTGGCCAAGTCCATCGACGACGCCCTCAGCACCTGGAGCCTCAAG  
 ACCATGTGCTCGCTGCAAGAGAGTGGCGGTACCAGCTCCACCAGGCGCTGCACCCGAGTGGGGACAGC  
 CAGGCTGGAGACCGAGGCGGCGCGGGAGCCAGAGAGCGGCCCGGGTCTGGAGATGAGGCCGTTGG  
 TCTGCTCAGGGTCACAGCGGTACCCTCATGATGGCTTTCGGGACGTTACGGTGCAGATCGCTAACCG



[View online »](#)

AACATCTCTGTTTCCTCCTCCACCGCCCTGTCTGTGGCCAACTGTCTGGGTGCACAGACCGCCAGGCCA  
CAGCCGAGCCTGCTGCCGCCAAGCCGAACAAGAGGACACCGCGGATCAGGAGGTCTCGGAAGTCCCAGC  
CTCGGAACAGATGGACCCACCCAGTGGAGACTCAGAGGCAGCGGAGAGCCGCGCCAGAGCGCACAGGAA  
CCCGCGGTGGCACAGGCCGTGGTGGAGGAGCGGTGGCTACAGAGGCAGAGGAGGAAGAGGAGGGGGCCA  
AACAGGCAGGGAAGGGGGCAGAGGCCGAGGGAGGCGCAACTCTGAGCAGCTGAGCAGCAGCAGCGCTTC  
CACCAAGTCTGCCAAATCCAGCTCAGAGGCTTCTGCCGCTGCCTCCAAGGAGGCCCTGCAGGCTGTGATC  
CTGAGCTTGCCCGCTATCACTCGGAGAACCAGCCAGCTGCAGGTCCCCCAGCTCTCCACAGACACCC  
TGCGCAAGCGGCTGTACCGCATCGGCCTAACCTCTTCAACATAAATCCGGACAAGGGCATCCAGTTCCT  
GATCTCACGTGGCTTCATCCCTGACACCCCATCGGTGTGGCCCACTTCCTCCTCCAGCGTAAAGGCCTC  
AGCCGCCAGATGATAGGAGAGTTCCTGGGCAACAGCAAGAAGCAGTTCAACCGGGACGTGCTGGACTGTG  
TGGTAGATGAGATGGACTTTTCCAACATGGAGCTGGATGAAGCCCTGAGGAAGTTTCAAGCCACATCCG  
TGTGCAGGGGAAGCACAGAAGGTGGAGCGACTCATAGAAGCTTTCAGCCAGCGCTACTGCATGTGCAAT  
CCTGAGGTGGTGAACAGTTCACAACCAGACACCATCTTCATCCTGGCCTTGGCCATCATCTTCTCA  
ACACCGACATGTACAGCCCAACATCAAGCCTGACCGGAAGATGATGCTAGAAGACTTTATCCGGAACCT  
CCGAGGTGTGGATGATGGTGCAGACATCCCAGAGAACTGGTGGTAGGCATCTATGAGAGGATCCAGCAA  
AAGGAGCTCAAATCCAATGAGGACCATGTCACATATGTACCAAGGTGGAGAAGTCCATCGTGGGCATGA  
AGACGGTGTGCAATGCCACACCGTCGCCTGGTCTGCTGTAGCCGGCTCTTCGAGGTGACCGATGTGAA  
CAAGCTACAGAAACAAGCAGCACACCAGAGAGAAGTGTTCCTCTTCAATGATCTGCTTGTGATTCTCAAG  
CTATGCCCAAAGAAGAAGAGCTCCTTACGTACACCTTCTGCAAGGCAGTCGGCCTGTTAGGCATGCGCT  
TTCACCTCTTCGAGAACGAGTATTACTCCCATGGCATCACCTGGCAACCCCACTCTCGGGCTCCGAGAA  
GAAGCAGGTGCTGCACTTCTGTGCCCTGGGCTCCGACGAGATGCAGAAGTTCGTGGAAGACCTGAAGGAG  
TCCATCGCTGAGGTGACAGAGCTGGAGCAGATCCGGATAGAATGGGAAGTGGAGAAGCAGCAGGGCACAA  
AGACTCTCTCCGTAAGGTCTGCTGGAGCCCAAGGGGACCCACAGTCAAGCAAGGATCACCCACAGCCAA  
GAGGGAGGCGATGGCAGGAGAGAAAAGCGCGGAGAGCTCGGGGGAGGTGTCAATTCACAACAGGCTTCAA  
ACGTCCCAGCACAGCCCAAGTTGGGGTTCGAGAGGGGAGCGCCTGCACCATCACCAACATCACCCAC  
CGCCGTTGCCCCAGACCCACAGCCTAGCCCCCTGAGGGAGCAGCCCCACCGCTGCCACTGCCACCACC  
CACACCTCAGGCACCCTGGTACAGTGCCAGCAGATTGTCAAGGTCATTGTCTGGACAAACCCTGCTTG  
GCCCGCATGGAGCCCTGCTGAGCCAGGCTCTGTCTGTACGCCTCATCTCCTCAGACTCCTGTGGCT  
CCACACCCTTGCCTGGTCCAGGCTCCCCAGTTAAGGTCATCCACCAGCCTCCACTGCCCCCGCCCCGCC  
CCCATAACAACCACCTCATCAGTTCTGCCCCAGGCTCCATGCTGCTCCGGCGCCGTTACTCCAGCGGC  
TCCAGGAGCCTGGTG

ACGCGTACGCGGCCGCTCGAGCAGAACTCATCTCAGAAGAGGATCTGGCAGCAAATGATATCCTGGATT  
ACAAGGATGACGACGATAAGGTTTAA

Protein Sequence: >MR224906 representing NM\_001033354  
 Red=Cloning site Green=Tags(s)

MESLLENPVRAVLYLKELTAIVQNQQSLIHTQRQRIDELERRLDEL SAENRSLWEHQQLLQAQPPPLV  
 PPPSAPLPAPAVTAPAAAAAQEPLQDHGQLIPASPEPLQHGGQLLAQPQPAPSSRVQTPQSPHQHPVAP  
 GAIADKEKERPSSCCAAAGALLQHASPAALGKGVLSRRPENETVLHQFCCPAADTEQKPCSDLASQSDG  
 SCAQAGGMEDSVVAAVAAGRPSAHAPKAQAPQLQEEERP GAVGSPRAGPLRAASPGRQPALATALCS  
 HTPAASEYELSLDLKKNQIEMLEHKYGGHLVSRRAACTIQTAFRQYQLSKNF EKIRNSLLESRLPRRISL  
 RKVRAPTAESLVAEKALLEGCGLLGLPLGRSPSLPPTFAGSLTELEDSFTEQVQSLAKSIDDALSTWSLK  
 TMCSLQESGAYQLHQALHPSAGQPLETEAAAAREPESGPGSGDEAGGLPQHGSGTLMMAFRDVTVQIANQ  
 NISVSSSTALSVANCLGAQTAQATAEPAAAQAEQEDTADQEVSEVPASEQMDPPSEDSEAAESRAQSAQE  
 PAVAQAVVEEAVATEEEEEEGAKQAGKGAEEGGDNSEQLSSSSASTKSAKSSSEASAAASKEALQAVI  
 LSLPRYHCENPASCRSPTLSTDLRKRLYRIGLNLFNINPKGIQFLISRGPIDPTPIGVAHLLQRKGL  
 SRQMIGEFLGNSKKQFNRDVLDVVDEMDFSNMELDEALRKFQAHIRVQGEAQKVERLIEAFSQRVCMCN  
 PEVVQQFHNPDTIFILAFAILLNTDMYSPNIKPDCKMML EDFIRNLRGVDDGADIPREL VVGIYERIQQ  
 KELKSNEHDVTVYTKVEKSI VGMKTVLSMPHRRLVCCSRLFEVTDVKNLQKQAAHQREVFLFNDLLVILK  
 LCPKKKSSFTYTFCKAVGLLGMRFHLFENEYSHGITLATPLSGSEKKQVLHFCALGSDQM KFVEDLKE  
 SIAEVTELEQIRIEWELEKQQGKTL SVRSAGA QGDPQSKQGSPTAKREAMAGEKAAESSGEVSIHNR LQ  
 TSQHSPKLGVERGAPAPSPPTSPPLPPDPQPSPLREQPPPLPLPPTPPGTLVQCQIQIVKIVLDPKCL  
 ARMEPLLSQLSCYASSSSDSCGSTPLRGPSPVKVIHQPLPPPPPPYHHPHF CPPGSMLLRRRYS SSG  
 SRSLV

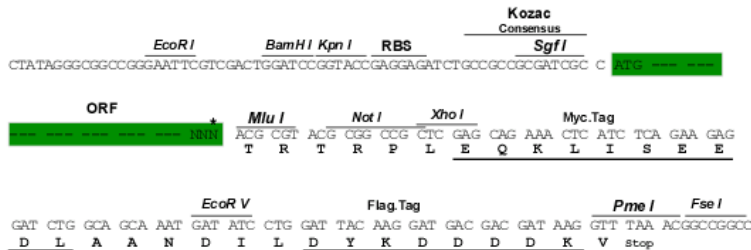
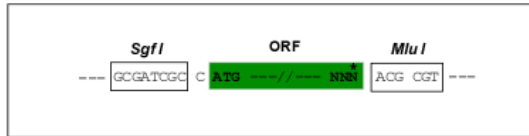
TRTRPLEQKLISEEDLAANDILDYKDDDDKV

Restriction Sites:

Sgfl-MluI

Cloning Scheme:

Cloning sites used for ORF Shuttling:



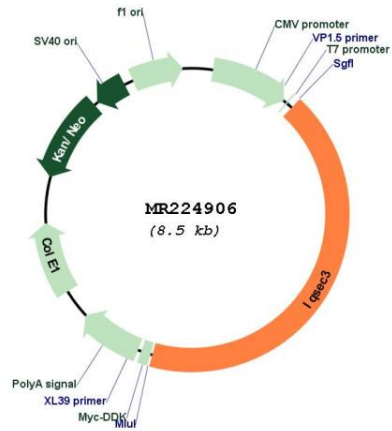
\* The last codon before the Stop codon of the ORF

ACCN: NM\_001033354

ORF Size: 3585 bp

<b>OTI Disclaimer:</b>	The molecular sequence of this clone aligns with the gene accession number as a point of reference only. However, individual transcript sequences of the same gene can differ through naturally occurring variations (e.g. polymorphisms), each with its own valid existence. This clone is substantially in agreement with the reference, but a complete review of all prevailing variants is recommended prior to use. <a href="#">More info</a>
<b>OTI Annotation:</b>	This clone was engineered to express the complete ORF with an expression tag. Expression varies depending on the nature of the gene.
<b>Components:</b>	The ORF clone is ion-exchange column purified and shipped in a 2D barcoded Matrix tube containing 10ug of transfection-ready, dried plasmid DNA (reconstitute with 100 ul of water).
<b>Reconstitution Method:</b>	<ol style="list-style-type: none"><li>1. Centrifuge at 5,000xg for 5min.</li><li>2. Carefully open the tube and add 100ul of sterile water to dissolve the DNA.</li><li>3. Close the tube and incubate for 10 minutes at room temperature.</li><li>4. Briefly vortex the tube and then do a quick spin (less than 5000xg) to concentrate the liquid at the bottom.</li><li>5. Store the suspended plasmid at -20°C. The DNA is stable for at least one year from date of shipping when stored at -20°C.</li></ol>
<b>RefSeq:</b>	<a href="#">NM_001033354.3</a> , <a href="#">NP_001028526.1</a>
<b>RefSeq Size:</b>	6861 bp
<b>RefSeq ORF:</b>	3588 bp
<b>Locus ID:</b>	243621
<b>UniProt ID:</b>	<a href="#">Q3TES0</a>
<b>Cytogenetics:</b>	6 F1
<b>MW:</b>	129.1 kDa
<b>Gene Summary:</b>	Acts as a guanine nucleotide exchange factor (GEF) for ARF1.[UniProtKB/Swiss-Prot Function]

Product images:



Circular map for MR224906