

## Product datasheet for **MR224898**

### Syt12 (NM\_134164) Mouse Tagged ORF Clone

#### Product data:

Product Type:	Expression Plasmids
Product Name:	Syt12 (NM_134164) Mouse Tagged ORF Clone
Tag:	Myc-DDK
Symbol:	Syt12
Mammalian Cell Selection:	Neomycin
Vector:	pCMV6-Entry (PS100001)
E. coli Selection:	Kanamycin (25 ug/mL)
ORF Nucleotide Sequence:	>MR224898 ORF sequence Red=Cloning site Blue=ORF Green=Tags(s)

TTTTGTAATACGACTCACTATAGGGCGGCCGGAATTCGTCGACTGGATCCGGTACCGAGGAGATCTGCC  
GCC**CGATCGCC**

ATGGCCGTGGACGTGACAGAATATCATCTGAGCGTCATCAAGAGCCCCCAGGCTGGGAGGTGGGTGTCT  
ATGCTGCCGGGGCCCTGGCTCTGCTGGGAATTGCTGCTGTGAGTCTATGGAAGCTCTGGACATCGGGGAG  
CTTCCCCAGCCCCCTCCCGTTCCCTAATTACGACTACAGGTACCTGCAGCAGAAATATGGAGAGGCCTAT  
GTGGAGGCTAAGCTGAAGCGGGTCCCTCCTTGGAAATGACCAGCGGACCACTACTCGGGGACCACCCAGCC  
GCAAAGGCAGCCTTAGTATAGAAGACACCTTTGAAAGCATCAGTGAGCTGGGACCCCTGGAGCTGATGGG  
CCGGGAAGTGGACTTAGCCCCCTATGGTACTCTCCGAAAGTCACAGTCGGCTGACTCTCTGAATTCATC  
TCCTCTGTGAGCAACACCTTTGGCAGGATTTACCCTGGGCCAGGTGGAGGTGAGCATGGACTATGATG  
GAGCCTCCACACCCTCCACGTGGCAGTACTACAAGGCAAAGACCTCCTGGAGCGCAGGAGGCCACCTT  
CGAGTCTGCTTCATGCGTGTGAGTCTGCTGCCAGACGAACAGATCGTGGGCATCTCCCGGATCCAGAGG  
AATGCCTATTCCATCTTCTCGATGAGAAGTCTCTGTCCCCCTGGATCCACAGCCCTGGAGGAGAAGA  
GCCTTAGATTTTCTGTGTTGGTATCGACGAGGATGAGCGGAATGTGAGCACCGCGTGGTGGAGCTGAA  
GCTGTCCGTTCTGGATCTCCCGCTGCAGCCCTCAGTGGCTGGCTATACTTGACAGGACCAGAATAAGGCT  
GCTGACGCTGTGGGAGAGATCCTGCTGTCCCTCAGTTACCTGCCACAGCTGAGCGGCTGACTGTGGTTG  
TGGTGAAGCCAAGAATCTCATCTGGACCAATGAGAAGAGCACAGCAGACCCCTTCGTCAAAGTATACCT  
GCTGCAGGATGGGAGGAAAATGAGCAAGAAGAAGACGGCTGTGAAGAGGGATGACCCCAACCCAGTGTTT  
AACGAAGCCATGATCTTCTCAGTGCCAGCCATTGTGCTACAGGACCTGTCTCTCCGGGTGACAGTGGCTG  
AGAGCAGCAGCGACGGCCGTGGGGACAACGTGGGCCATGTATCATTGGGCCAGGGGTGAGTGGCATGGG  
CACCACATTGGAACAGATGCTGGCCACACTACGCAGGCTGTGTCCATGTGGCATCCAGTCCGGCGA  
AAC

**ACGCGT**ACGCGGCCGCTCGAGCAGAACTCATCTCAGAAGAGGATCTGGCAGCAAATGATATCTGGATT  
ACAAGGATGACGACGATAAGGTTTAA



[View online »](#)

**Protein Sequence:** >MR224898 protein sequence  
 Red=Cloning site Green=Tags(s)

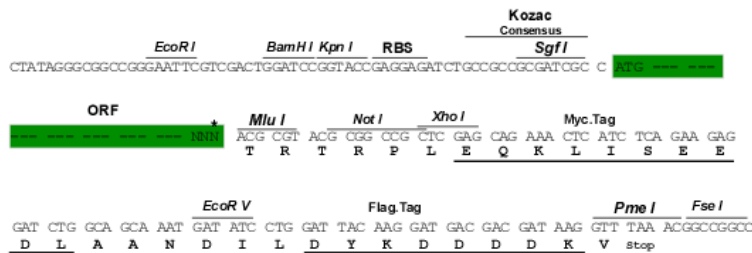
MAVDVTEYHLSVIKSPPGWEVGVYAAGALALLGIAAVSLWKLWTSFSPSPFPNYDYRYLQQKYGEAY  
 VEAKLKRVPWPDQRTTTRGPPSRKGSLSIEDTFESISELGPLELMGRELDLAPYGTLRKSQSADSLNSI  
 SSVSNTFGQDFTLGQVEVSMYDYGASHTLHVAVLQGKDLLEREEATFESCFMRVSLLPDEQIVGISRIQR  
 NAYSIFDFDEKFSVPLDPTALEEKSLRFVFGIDEDEERNVSTGVVELKLSVLDLPLQPFSGWLYLQDQNK  
 ADAVGEILLSLSYLPTAERLTVVVVKAKNLIWTNEKSTADPFVKVYLLQDGRKMSKKKTAVKRDDPNPVF  
 NEAMIFSVPAIVLQDLSLRVTVAESSDGRGDNVGHVIGPGVSGMGTTHWNQMLATLRPVMWHHPVRR  
 N

TRTRPLEQKLISEEDLAANDILDYKDDDDKV

**Restriction Sites:** SgfI-MluI

**Cloning Scheme:**

Cloning sites used for ORF Shuttling:



\* The last codon before the Stop codon of the ORF

**ACCN:** NM\_134164

**ORF Size:** 1266 bp

**OTI Disclaimer:** The molecular sequence of this clone aligns with the gene accession number as a point of reference only. However, individual transcript sequences of the same gene can differ through naturally occurring variations (e.g. polymorphisms), each with its own valid existence. This clone is substantially in agreement with the reference, but a complete review of all prevailing variants is recommended prior to use. [More info](#)

**OTI Annotation:** This clone was engineered to express the complete ORF with an expression tag. Expression varies depending on the nature of the gene.

**Components:** The ORF clone is ion-exchange column purified and shipped in a 2D barcoded Matrix tube containing 10ug of transfection-ready, dried plasmid DNA (reconstitute with 100 ul of water).

**Reconstitution Method:**

1. Centrifuge at 5,000xg for 5min.
2. Carefully open the tube and add 100ul of sterile water to dissolve the DNA.
3. Close the tube and incubate for 10 minutes at room temperature.
4. Briefly vortex the tube and then do a quick spin (less than 5000xg) to concentrate the liquid at the bottom.
5. Store the suspended plasmid at -20°C. The DNA is stable for at least one year from date of shipping when stored at -20°C.

**RefSeq:** [NM\\_134164.5](#), [NP\\_598925.1](#)

**RefSeq Size:** 3277 bp

**RefSeq ORF:** 1266 bp

**Locus ID:** 171180

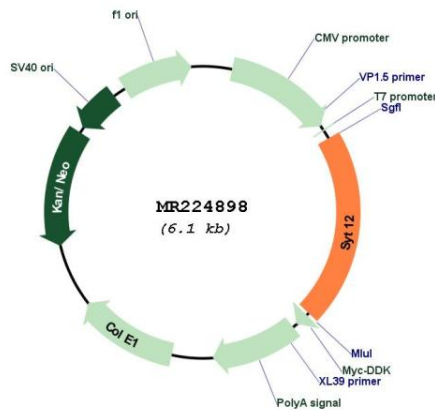
**UniProt ID:** [Q920N7](#)

**Cytogenetics:** 19 A

**MW:** 46.7 kDa

**Gene Summary:** May be involved in Ca(2+)-dependent exocytosis of secretory vesicles through Ca(2+) and phospholipid binding to the C2 domain or may serve as Ca(2+) sensors in the process of vesicular trafficking and exocytosis.[UniProtKB/Swiss-Prot Function]

**Product images:**



Circular map for MR224898