

Product datasheet for MR224878

Aff4 (NM_033565) Mouse Tagged ORF Clone

Product data:

Product Type:	Expression Plasmids
Product Name:	Aff4 (NM_033565) Mouse Tagged ORF Clone
Tag:	Myc-DDK
Symbol:	Aff4
Synonyms:	AF5Q31; Alf4; Laf4; MCEF
Mammalian Cell Selection:	Neomycin
Vector:	pCMV6-Entry (PS100001)
E. coli Selection:	Kanamycin (25 ug/mL)
ORF Nucleotide Sequence:	>MR224878 ORF sequence Red=Cloning site Blue=ORF Green=Tags(s)

TTTTGTAATACGACTCACTATAGGGCGGCCGGAATTCGTCGACTGGATCCGGTACCGAGGAGATCTGCC
GCC**CGATCGCC**

ATGAACCGTGAAGACCGGAATGTGCTGCGCATGAAAGAAAGGAAAGGCCGAATCAGGAAATTCAGCAGG
GTGAAGACGCCTCCCACCTAGTTCTCTCTTTGCTGAGCCATACAAAGTCACTAGCAAAGAAGATAA
GTTATCAAGTCCGATTCCAGAGCATGCTTGGAACTACGATGAAATGAAGGATTACATAGGAGACAGATCG
ATACCAAAGCTTGTGCAATCCCAAGCCTGCAGTACCAACGACCACAGACGAGAAAGCAAACCCAAATT
TTTTTTGAGCAGAGACATGGAGGATCTCATCAGAGTAGCAAATGGACTCCTGTAGGCCCGCCCCAGCAC
CTCTCAGTCTCAGAAACGCTCCTCTGCCCTGCAGAGTGGACACAGCAGCCAACGGAGTGGTGCAGGAGGG
AGTGGCGCCAGCAGCAGTGGCCAGAGGCATGACCGTGACTCCTACAGCAGTAGCAGGAAAAAGGCCAGC
ACGGCTCAGAGCACTCCAAATCTCGATCCTCAAGCCCTGGAAAACCCAGGCTGTTTCTTCAATTAAGTTC
TAGTCATTCCAGGTCTCATGGGAATGATCACCATAGCAAGGAACATCAGCGCTCCAAATCACCTCGGGAC
CCTGATGCCAACTGGGATTCTCCTTCCCGCGGACCTTTTTCAAGTGGCAACATTCAAGTCAGTCTTTCC
CACCTTCTTTGATGTCAAATCTAGTTCAATGTTACAGAAACCCACTGCCTATGTACGGCCCATGGATGG
ACAGGAGTCTGTGAACCAAAGCTGTCTCTGAGCACTACAGCAGCCAGTCTCATGGTAATAGCATGACT
GAGCTGAAGCCCGCAGCAAGCACATCTCACCAGCTGAAAATTCCTTCCCGACCTTTGGATGCATCGG
TTTCTGGTGATGTAAGCTGTGTAGATGAAATACTTAAAGAGATGACGCATTTCATGGCCTCCCCCTCTAAC
GGCTATTACATACACCATGCAAAAACAGAACCTTCCAAATTCCTTTTTCAACTAAGGAGTCGCAACAGTCT
AACTTTGGCCCTGGAGAACAAAAAGATACAGTACTGCTAAAACATCAAATGGACACCAGTCAAATCTA
TGTTAAAAGATGACTTAAAATAAGCAGCAGTGAAGACAGTGTGGGAAACAGGATTGTGATAAGACAAT
GCCAAGGAGTACACCAGGAAGTAACTCTGAACCTTACACCATAACAGTGAGGGAGCAGACAACCTCAGG
GATGACTCGAGCAGCCACAGTGGATCTGAGAGCAGCTCTGGGTCTGACTCGGAGAGTGAGAGCAGCTCCA
GTGACAGTGAGGCTAATGAGCCGTCGAGAGCGCATCTCCTGAGCCTGAACCACCACCAACAACAAGTG
GCAACTTGATAATTGGTTGAATAAAGTGAACCCACATAAAGTATCCCGAGCTTCTCTGTAGACAGCAAC



[View online »](#)

ATCCCATCTTCTCAAGCCTACAAGAAAGAAGGCCGGGAGCAGGGCACTGCCAGTAACTACACAGATCCAG
GGGGGACAAAAGAAACGAGCTCTGCCACCCAGGACGAGACTCTAAAACCATCCAAAAGGGATCAGAAAAG
TGGCCGTGGGAGGCAGAAGTCTCCTGCACAGAGCGACGTACCACTCAGAGGAGAAGTGTGGCAAAAAA
CAACCCAAAAACCTGAGAAGTCAGCTGCTGAAGAGCCTCGTGGAGGCCTGAAGATAGAAAGTGAGACCC
CTGTGGACATGGCTGCCAGCATGCCCTCCAGCAGGCACAAAGCAGCCACCAAGGGCTCGAGGAAACCCAA
CATCAAAAAGGAATCAAAATCTTCTCCTCGACCTACGGCAGAGAAGAAGAAGTACAAGTCAGCCAGTAAA
CCGTCCCAGAAGTCTCGGGAGATCATAGAGACTGACACCTCGTCCTCAGACTCGGACGGCAGCGAGAGCC
TGCTCCCTCCTCACAGACTCCTAAGTACCCTGAAAGCAACAGGACTCCTGTCAAACCCTCCTCAGTGGA
GGAAGAAGATAGCTTTTTTCGGCAACGAATGTTCTCCTATGGAAGAGAAGGAGCTCCTTTCCCCACTC
AGTGAGCCTGATGACAGGTATCCACTCATTGTGAAGATTGACCTCAATCTTCTGACTCGAATACCCGGGA
AGCCTTACAAAGAAACAGAGCCACCCAAGGGGAAAAGAAAAATGTTCCAGAGAAACACTCGAGAGAGGT
GCAGAAGCAAGCCTCAGAAAAGGCTTCCAACAAAGGCAAGAGGAAACACAAGAATGATGATGATACCCGA
GCCAGTGAGAGCAAAAAACCCAAAACAGAGGACAAGAAGTATCAGGCCACAAGCCATCCAGCAGCAGAG
AGTCATCTAAGCAGAGTAGTACAAAAGAAAAGGACTTGCTACCTTACCTGCTGGGCCATTCTTTCAA
AGATTCAAAACAGAGCATGGTTCTCGGAAGAGGACTGTCAGTCAGTCGTCGTCCTTAAAGTCCAGTGGG
ACCAGCAGCAAAGAGAACAGTGGCAGCAGCAGCAAGAGCAGCTCCTCCTCCACAGCGAAGCAGAAGAAGA
CTGAAGGCAAGGGTCCCAGCAGCTCCAAGGAGGCCAAGGAGAAGGCTCCAAATAGCTCCTCTAATTGTCC
TCCGTCTACACCAACTTCTGAGTCTTCAAGCCTCGGAGAACAAGCTTGCCTTTGATGACAGAAATTAT
TCAGCAGACCATTTATTTACAAGAAGCAAAAAACTCAAACACAATGCAGATGCTTTGTCTGACAGGTTTG
AGAAAGCCGTGTACTACCTTGATGCTGTAGTGTCTTTTATTGAGTGTGGGAATGCATTAGAGAAGAACGC
TCAGGAATCCAAGTCCCCATTCCCTATGTAAGTACTCAGACACGGTGGAGCTCATTAAAGTACACTATGAAACTA
AGAATTTATTTGGCACCAGATGCTACAGCTGCAGACAAGAGACTCACAGTACTTTGCCTGAGATGCCAGT
CATTATTGTACCTGAGGCTGTTCAAAGTGAAGAAGGAGAAGCTCTCAAGTACTCCAAGACGCTAACTGA
GCACCTGAAGAATCTTACAGTAATTCTCAAGCACCTTACCCGGCTTGGGGAGCAAAGCTGTTGGGATG
CCCTCCCTGTTTCTCCAAAAGTGTACCAGGCAATTCTGGAAGTACTCTTCTGGGGAAAGTAGTGCTT
CAGCAAGTGGTTCTCAGTGACCATTCCACAGAAAATCCACCAGATGGCAGCAAGCTATGTCAGGTTAC
ATCTAAGTTCCTCTATGCCACAGAAAATTTGGGACCAAGCTGAACAGCTTTCCAAAGAACAAAAAGAATTC
TTTGCTGAACTGGACAAAGTATGGGCCCTCTCATCTTTAATGCAAGCATCATGACAGATCTGGCTCGTT
ACACCCGGCAGGGACTGCATTGGCTTCGGCAGGATGCCAAGCTGATATCT

ACGCGTACGCGGCCGCTCGAGCAGAAACTCATCTCAGAAGAGGATCTGGCAGCAAATGATATCCTGGATT
ACAAGGATGACGACGATAAGGTTTAA

Protein Sequence: >MR224878 protein sequence
 Red=Cloning site Green=Tags(s)

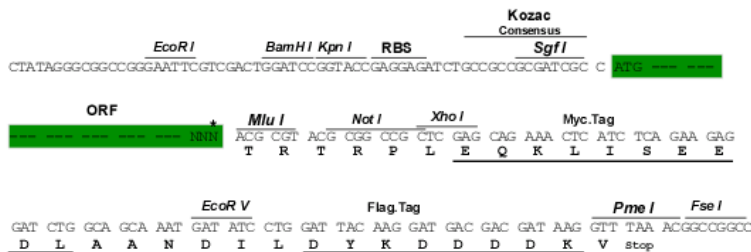
```

MNREDRNLVLMKERERRNQEIQQGEDAFPPSSPLFAEPYKVTSKEDKLSSRIQSMLGNYDEM KDYIGDRS
IPKLVVIPKPAVPTTTDEKANPNFFEQRHGGS HQSSKWTPVGPAPSTSQSQRSSALQSGHSSQRS GAGG
SGASSSGQRHDRDSYSSSRKKGGQHGSEHSKSRSSSPGKPQAVSSLSSSHSRSHGNDHHSKEHQRSKSPRD
PDANWDSPSRGPFSGGHSSQSFPPSLMSKSSSMLQKPTAYVRPMDGQESVEPKLSEHYSSQSHGNSMT
ELKPSSKAHLTKLKIPSRPLDASVSGDVSCVDEILKEMTHSWPPPLTAIHTPCKTEPSKFPFPTKESQQS
NFGPGEQKRYSTAKTSNGHQSKSMLKDDLKLSSESDSDGEQDCDKTMPRSTPGSNSEPSHHNSEGADNSR
DDSSSHSGSESSSGDSESESSSDSEANEPSQSASPEPEPPTNKWQLDNWLNKVNPHKVSPASSVDSN
IPSSQAYKKEGREQTASNYTDPGGTKETSSATPGRDSKTIQKGSESGRGRQKSPAQSDSTTQRRTVGKK
QPKKPEKSAAEPRGGLKIESETPVDMAASMPSSRHKAATKGRKPNIKKESKSSPRPTAEK KKYK SASK
PSQKSREI IETDTSSSDSDGSESLPPSSQTPKY PESNRTPVKPSVVEEDSFFRQRMFSPMEEKELL SPL
SEPDDRYPLIVKIDLNLLTRIPGKPYKETEPPKGEKKNVPEKHSREVQKQASEKASNKGRKHKHND DTR
ASESKPKKTEDKNSSGHKPSSSRESSKQSSTKEKDLLPSPAGPILSKDSKTEHGSRKRTVSQSSSLKSSG
TSSKENGSSSSSSSTAKQKTEGKGPSSSKEAKEKAPNSSSNCPSTPTSESSKPRRTKLAFDDRNY
SADHYLQEAKKLKHNADALDRFEKAVYYLDAVVSFIECGNALEKNAQESKSPFPMYSDTVELIKYTMKL
KNYLAPDATAADKRLTVLCLRCQSLLYLRLFKLKKENALKYSKTLTEHLKNSYSNSQAPSPGLGSKAVGM
PSPVSPKLSPGNSGSYSSGGSSASAGSSVTIPQKIHQMAASYVQVTSNFLYATEIWDQAEQLSKEQKEF
FAELDKVMGPLIFNASIMTDLARYTRQGLHWRQDAKLIS
  
```

TRTRPLEQKLISEEDLAANDILDYKDDDDKV

Restriction Sites: SgfI-MluI
Cloning Scheme:

Cloning sites used for ORF Shuttling:



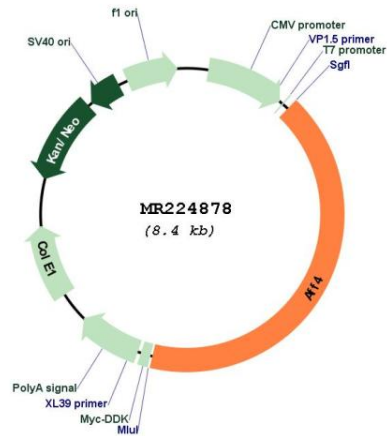
* The last codon before the Stop codon of the ORF

ACCN: NM_033565

ORF Size: 3483 bp

OTI Disclaimer:	The molecular sequence of this clone aligns with the gene accession number as a point of reference only. However, individual transcript sequences of the same gene can differ through naturally occurring variations (e.g. polymorphisms), each with its own valid existence. This clone is substantially in agreement with the reference, but a complete review of all prevailing variants is recommended prior to use. More info
OTI Annotation:	This clone was engineered to express the complete ORF with an expression tag. Expression varies depending on the nature of the gene.
Components:	The ORF clone is ion-exchange column purified and shipped in a 2D barcoded Matrix tube containing 10ug of transfection-ready, dried plasmid DNA (reconstitute with 100 ul of water).
Reconstitution Method:	<ol style="list-style-type: none">1. Centrifuge at 5,000xg for 5min.2. Carefully open the tube and add 100ul of sterile water to dissolve the DNA.3. Close the tube and incubate for 10 minutes at room temperature.4. Briefly vortex the tube and then do a quick spin (less than 5000xg) to concentrate the liquid at the bottom.5. Store the suspended plasmid at -20°C. The DNA is stable for at least one year from date of shipping when stored at -20°C.
RefSeq:	NM_033565.2 , NP_291043.1
RefSeq Size:	10165 bp
RefSeq ORF:	3483 bp
Locus ID:	93736
UniProt ID:	Q9ESC8
Cytogenetics:	11 B1.3
MW:	126.6 kDa
Gene Summary:	Key component of the super elongation complex (SEC), a complex required to increase the catalytic rate of RNA polymerase II transcription by suppressing transient pausing by the polymerase at multiple sites along the DNA. In the SEC complex, AFF4 acts as a central scaffold that recruits other factors through direct interactions with ELL proteins (ELL, ELL2 or ELL3) and the P-TEFb complex. In case of infection by HIV-1 virus, the SEC complex is recruited by the viral Tat protein to stimulate viral gene expression (By similarity).[UniProtKB/Swiss-Prot Function]

Product images:



Circular map for MR224878