

Product datasheet for MR224858

Unc93b1 (NM_001161428) Mouse Tagged ORF Clone

Product data:

Product Type:	Expression Plasmids
Product Name:	Unc93b1 (NM_001161428) Mouse Tagged ORF Clone
Tag:	Myc-DDK
Symbol:	Unc93b1
Synonyms:	Unc-93B1; Unc93b
Vector:	pCMV6-Entry (PS100001)
E. coli Selection:	Kanamycin (25 ug/mL)
Cell Selection:	Neomycin
ORF Nucleotide Sequence:	>MR224858 representing NM_001161428 Red=Cloning site Blue=ORF Green=Tags(s)

TTTTGTAATACGACTCACTATAGGGCGCCGGGAATTCGTCGACTGGATCCGGTACCGAGGAGATCTGCC
GCC**CGGATCGCC**

ATGAAGGAAGTCCCAACCAGCTGCTGGTGCCAGAAGTCAAGCCCTTGATCTGGATCTGGTCATGGAGG
TGGAGCCTCCGCTCTACCCTGTGGCCGGGCGCGGGTCTCAAGGGGATGAAGACCGGCACGGAGTTCC
TGATGGGCCAGAGGCTCCCTTGGACGAAGTCTGGGTGCGTACCCCAACTACAATGAGGAGGAGGAAGAG
CGCCGCTACTACCGCCGAAGCGCTCGGAGTGGTCAAGAACGTGCTGGCGGCCAGCACGGGTGTACCC
TTACTTACGGCGTCTACCTGGGCCTCCTGCAGATGCAACTGATCCTGCACTATGATGAGACCTACAGAGA
GGTGAAGTATGGCAACATGGGGCTGCCGGACATCGATAGCAAGATGCTGATGGGTATCAACGTGACGCCT
ATCGCTGCCCTGCTCTACACACCTGTGCTCATCAGTTTTTTGGTACCAAGTGGATGATGTTCTTGGCTG
TGGCATCTATGCCCTCTTTGTCTCTACCAACTACTGGGAACGCTACTACACGCTGGTGCCTCTGCTGT
GGCTCTGGGCATGGCCATTGTGCCTCTGTGGCCCTCCATGGGCAACTATACACCAGGATGTCCAGAAG
TACTATGAATACTCCCACTACAAGGAGCAAGATGAGCAGGGACCTCAGCAGCGCCACCACGAGGTTCCC
ACGCACCCTATCTCCTGGTTTTCCAGGCCATCTCTATAGCTTCTCCACTTGAGCTTCGGGTGTGCCCA
GCTGCCCATGATTTACTTCTCAACAACACTACCTGTATGACTGAACACACACTGATCAACGTGCAGAGC
TGCGGTACTAAGAGCCAAGGCATTCTGAATGGCTTCAACAAGACGGTCCCTTCGGACGCTGCCGCGCAGCA
AAAACCTTATTGTTGTAGAGAGCGTGCTCATGGCGGTGGCCTTCTTGGCCATGCTGATGGTGTGGCCCT
GTGTGGAGCCGCTTACCGGCCACGGAAGAGATCGACCTGCGCAGCGTGGGCTGGGGCAACATCTTCCAG
CTGCCCTTCAAACACGTGCGTGACTTTCGCTTACGCCATCTGGTGCCTTCTTTATCTACAGTGGCTTTG
AGGTGCTCTTTCCTGCACTGGTTTTGCCCTGCACTCCTGGGCATCCTATATGAAGACAAAGAGAGGCAG
GACTTCATCTTACCATCTACTGCTGGCAGGCCGTGGCCATCTTGTGTGTACCTGGGCTCCAGCT
TGCCCA

ACGCGTACGCGGCCGCTCGAGCAGAAACTCATCTCAGAAGAGGATCTGGCAGCAAATGATATCCTGGATT
ACAAGGATGACGACGATAAGGTTTAA



[View online »](#)

Protein Sequence: >MR224858 representing NM_001161428
 Red=Cloning site Green=Tags(s)

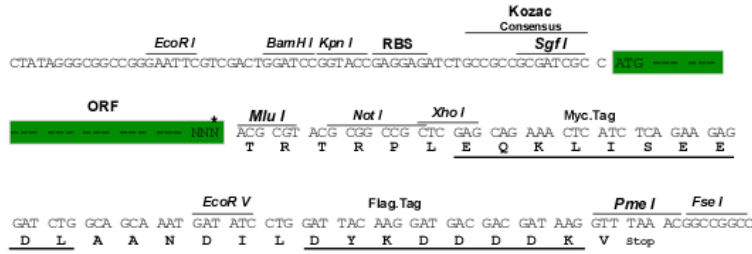
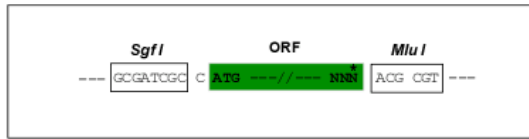
MKEVPTSCWCPELQALDLDLVMEVEPPLYPVAGAAGPQGDEDRHGVPDGPEAPLDELVGAYPNYNEEEE
 RRYRRKRLGVVKNVLAASGTGLTYGVYLLQLLHYDETYREVKYGNMGLPDISKMLMGINVT
 IAALLYTPVLIIRFFGKMMFLAVGIYALFVSTNYWERYTLPVSAVALGMAIVPLWASMGNYITRMSQK
 YVEYSHYKEQDEQGPQRPGRSHAPYLLVFQAIFFYSFFHLSFACAQLPMIYFLNNYLIDLNHTLINVQS
 CGTKSQGILNGFNKTVLRTLPRSKNLI VVESVLMVAFLAMLMLVGLCGAAYRPTEEIDLR SVGWGNI FQ
 LPFKHVRDFRLRHLVPPFIYSGFEVLFCTGFALHSWASYMKT KRGR TSSSPSITGGRPWPSLLCTWAPA
 CP

TRTRPLEQKLISEEDLAANDILDYKDDDDKV

Restriction Sites:
Cloning Scheme:

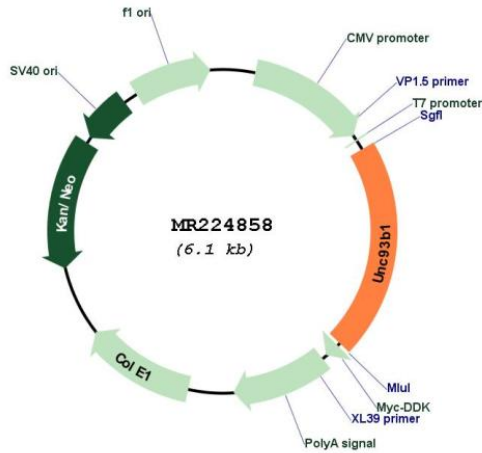
SgfI-MluI

Cloning sites used for ORF Shuttling:



* The last codon before the Stop codon of the ORF

Plasmid Map:



ACCN: NM_001161428

ORF Size:	1266 bp
OTI Disclaimer:	<p>Due to the inherent nature of this plasmid, standard methods to replicate additional amounts of DNA in E. coli are highly likely to result in mutations and/or rearrangements. Therefore, OriGene does not guarantee the capability to replicate this plasmid DNA. Additional amounts of DNA can be purchased from OriGene with batch-specific, full-sequence verification at a reduced cost. Please contact our customer care team at custsupport@origene.com or by calling 301.340.3188 option 3 for pricing and delivery.</p> <p>The molecular sequence of this clone aligns with the gene accession number as a point of reference only. However, individual transcript sequences of the same gene can differ through naturally occurring variations (e.g. polymorphisms), each with its own valid existence. This clone is substantially in agreement with the reference, but a complete review of all prevailing variants is recommended prior to use. More info</p>
OTI Annotation:	This clone was engineered to express the complete ORF with an expression tag. Expression varies depending on the nature of the gene.
Components:	The ORF clone is ion-exchange column purified and shipped in a 2D barcoded Matrix tube containing 10ug of transfection-ready, dried plasmid DNA (reconstitute with 100 ul of water).
Reconstitution Method:	<ol style="list-style-type: none">1. Centrifuge at 5,000xg for 5min.2. Carefully open the tube and add 100ul of sterile water to dissolve the DNA.3. Close the tube and incubate for 10 minutes at room temperature.4. Briefly vortex the tube and then do a quick spin (less than 5000xg) to concentrate the liquid at the bottom.5. Store the suspended plasmid at -20°C. The DNA is stable for at least one year from date of shipping when stored at -20°C.
RefSeq:	NM_001161428.1 , NP_001154900.1
RefSeq Size:	2003 bp
RefSeq ORF:	1269 bp
Locus ID:	54445
UniProt ID:	Q8VCW4
Cytogenetics:	19 A
MW:	48.3 kDa
Gene Summary:	Plays an important role in innate and adaptive immunity by regulating nucleotide-sensing Toll-like receptor (TLR) signaling. Required for the transport of a subset of TLRs (including TLR3, TLR7 and TLR9) from the endoplasmic reticulum to endolysosomes where they can engage pathogen nucleotides and activate signaling cascades. May play a role in autoreactive B-cells removal.[UniProtKB/Swiss-Prot Function]