

## Product datasheet for MR224822

### Phf23 (NM\_030064) Mouse Tagged ORF Clone

#### Product data:

Product Type:	Expression Plasmids
Product Name:	Phf23 (NM_030064) Mouse Tagged ORF Clone
Tag:	Myc-DDK
Symbol:	Phf23
Synonyms:	JUNE-1
Mammalian Cell Selection:	Neomycin
Vector:	pCMV6-Entry (PS100001)
E. coli Selection:	Kanamycin (25 ug/mL)
ORF Nucleotide Sequence:	>MR224822 representing NM_030064 Red=Cloning site Blue=ORF Green=Tags(s)

TTTTGTAATACGACTCACTATAGGGCGGCCGGAATTCGTCGACTGGATCCGGTACCGAGGAGATCTGCC  
GCC**CGATCGCC**

ATGCTGGAAGCCATGGCGGAGCCAGTCCCGAAGATCCGCTCCGACTCTTAAACCAGAGACTCAGCCAC  
CGGAGAAAAGGCGGAGAACCATTGAGGATTTTAACAAATCTGCAGTTTTGTCTTGGCCTATGCTGGTTA  
CATCCCCCTAGCAAAGAGGAAAGCGATTGGCCAGCCTCTGGCTCTAGCTCTCCATTGCGAGGTGAGAGT  
GCAGCAGACAGTGATGGCTGGGACTCGGCCCGTCGGACCTTCGAACTATCCAGACTTTTGTAAAGAAAG  
CAAAGTCATCAAAGAGAAGGGCAGTTCAATCAGGTCTACCCAGCCAGGACCCCAAGGTCCACTTTTTTC  
TCGCTGTCAGGCTCCTGACAGTGCTACTCTGCTTGAGAAGATGAAGCTCAAGGACTCTTTTTGATCTG  
GATGGGCCCAAAGTGGCATCTCCACTCTCTCCACATCATTGACGCATACTTCCCGGCCCGCTGCTC  
TCGCCCCAGTGCCGCTGTCCCAGGGGACCTCTCCAGCCTCGAAAGAAGGACCGAAAGAATAGAAAGTT  
GGGACCAGGAGGTGGGGCTGGCTTTGGGGTGTCTCGGAGACCTCGACCAGCTCCTGGGGATGGGGAAAAG  
CGGTCTCGAATCAAGAAGAGCAAGAAGCGGAAGTTGAAAAGGCAGATCGGGGAGATAGACTCCCACCTC  
CTGGCCCTCCTAGGGCTCCTCCAGTGATACAGACTCTGAAGAGGAGGAGGAAGAGGAAGAAGAGGAAGA  
TGATGAGGAAGAGATGACAGTGGGGGTGGAGTCCCAGCCCTGTGCTCCCAACACCCCTGAGGCCCC  
AGGCCCTGTTACAGTGCACCTGAAGGTGCTCCCCCTACTGACAGTGAAGGCAAGATGTGGGCAGCA  
CAGAAACAAGCCAAGATGGAGATGCTAGCTCCAGTGAAGGCGAGATGCGGGTCATGGATGAGGACATCAT  
GGTAGAATCAGGTGACGACTCCTGGGATCTGATCACGTGTTACTGCAGAAAGCCCTTTGCGGGGCGGCC  
ATGATTGAGTGCAGCCTCTGTGGGACGTGGATCCACCTCTCCTGTGCTAAGATTAAGAAGACCAACGTTC  
CCGACTCTTTTATTGCCAGAAATGCAAGGAACCTCGGCCAGAGGCCGCGGTTAGGGGTCTCCCAA  
ATCTGGAGAACC

**ACGGT**ACGCGGCCGCTCGAGCAGAAACTCATCTCAGAAGAGGATCTGGCAGCAATGATATCCTGGATT  
ACAAGGATGACGACGATAAGGTTTAA



[View online »](#)

**Protein Sequence:** >MR224822 representing NM\_030064  
Red=Cloning site Green=Tags(s)

MLEAMAEPSPEDPPPTLKPETQPPEKRRRTIEDFNKFCFVLAYAGYIPPSKEESDWPASGSSSPLRGES  
 AADSDGWDSAPSDLRTIQTFVKKAKSSKRRAVQSGPTQPGPPRSTFSRLQAPDSATLLEKMKLKDSLFDL  
 DGPKVASPLSPTSLTHTSRPPAALAPVPLSQGDL SQPRKKDRKNRKLGPGGGAGFVGLRRPRPAPGDGK  
 RSRIKKSKKRKLKADRGDRLPPPGPPRAPPSDTDEEEEEEEEEDEEEMTVGGGVPAPVLPPTPEAP  
 RPPVTVHSEGAPPTDSEKDVGSTETSQDGDASSSEGEEMRVMEDEDIMVESGDDSWDLITCYCRKPFAGRP  
 MIECSLCGTWIHLSCAKIKKTNVPDFFYCQKCKELRPEARRLGGLPKSGEP

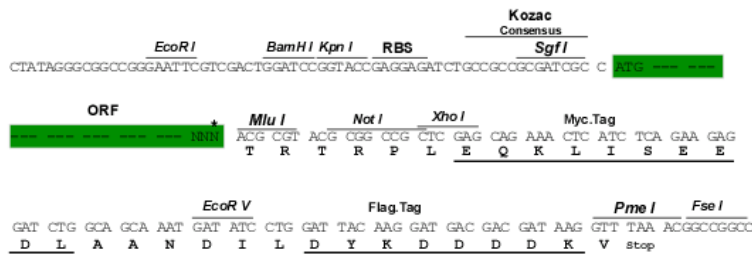
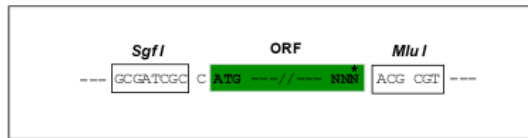
TRTRPLEQKLISEEDLAANDILDYKDDDDKV

**Restriction Sites:**

SgfI-MluI

**Cloning Scheme:**

Cloning sites used for ORF Shuttling:



\* The last codon before the Stop codon of the ORF

**ACCN:** NM\_030064

**ORF Size:** 1203 bp

**OTI Disclaimer:** The molecular sequence of this clone aligns with the gene accession number as a point of reference only. However, individual transcript sequences of the same gene can differ through naturally occurring variations (e.g. polymorphisms), each with its own valid existence. This clone is substantially in agreement with the reference, but a complete review of all prevailing variants is recommended prior to use. [More info](#)

**OTI Annotation:** This clone was engineered to express the complete ORF with an expression tag. Expression varies depending on the nature of the gene.

**Components:** The ORF clone is ion-exchange column purified and shipped in a 2D barcoded Matrix tube containing 10ug of transfection-ready, dried plasmid DNA (reconstitute with 100 ul of water).

**Reconstitution Method:**

1. Centrifuge at 5,000xg for 5min.
2. Carefully open the tube and add 100ul of sterile water to dissolve the DNA.
3. Close the tube and incubate for 10 minutes at room temperature.
4. Briefly vortex the tube and then do a quick spin (less than 5000xg) to concentrate the liquid at the bottom.
5. Store the suspended plasmid at -20°C. The DNA is stable for at least one year from date of shipping when stored at -20°C.

**RefSeq:** [NM\\_030064.4](#), [NP\\_084340.2](#)

**RefSeq Size:** 2014 bp

**RefSeq ORF:** 1206 bp

**Locus ID:** 78246

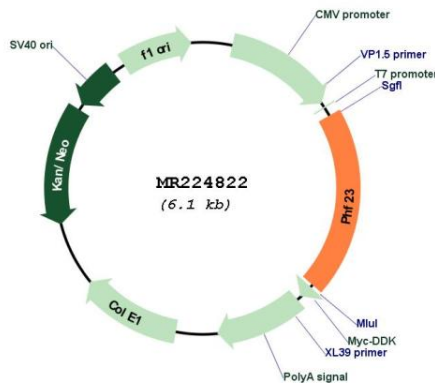
**UniProt ID:** [Q8BSN5](#)

**Cytogenetics:** 11

**MW:** 44 kDa

**Gene Summary:** Acts as a negative regulator of autophagy, through promoting ubiquitination and degradation of LRSAM1, an E3 ubiquitin ligase that promotes autophagy in response to starvation or infecting bacteria.[UniProtKB/Swiss-Prot Function]

### Product images:



Circular map for MR224822