

Product datasheet for **MR224814**

Dido1 (NM_011805) Mouse Tagged ORF Clone

Product data:

Product Type:	Expression Plasmids
Product Name:	Dido1 (NM_011805) Mouse Tagged ORF Clone
Tag:	Myc-DDK
Symbol:	Dido1
Synonyms:	6720461J16Rik; C130092D22Rik; D130048F08Rik; Datf; DATF-1; Datf1; di; dido; DIO; DIO-1
Vector:	pCMV6-Entry (PS100001)
E. coli Selection:	Kanamycin (25 ug/mL)
Cell Selection:	Neomycin



[View online »](#)

ORF Nucleotide Sequence:

>MR224814 representing NM_011805
 Red=Cloning site Blue=ORF Green=Tags(s)

TTTTGTAATACGACTCACTATAGGGCGGCCGGAATTCGTCGACTGGATCCGGTACCGAGGAGATCTGCC
 GCC**CGGATCGCC**

ATGGATGATAAAGGGCACCTGAGCAATGAGGAAGCACCCAAGGCTATCAAACCCACCAGTAAAGAGTTCA
 GGAAAACCTGGGTTTTTCGAAGAACCACGATTGCCAAACGTGAGGGTGCAGGAGACCGAGGTGGACCC
 CAGTGAGCAGCAACCACAGCAGCATAACCTCTCCCTGCGCCGAGTGGACGGCAACCAAAACGTACTGAG
 AGGGTAGAAGAGTTTCTTACCACGGTTCGGCGCCGAGGGAAAAAGAATGTGCCGGTGTCCCTGGAGGATT
 CCAGTGAGCCACATCTTCCACAGTCACTGATGTGGAGACAGTTCGAGGGGAGCGTTGAAAGCAGTTC
 TGAGATCAGAAGTGGCCCTGTATCTGACTCCTTAGGGAAAGAACATCCTGCCTCTTCTGAAAAGGCAAAA
 GGAGGTGAAGAGGAAGAAGACACCTCTGACAGTGACAGTGTGCCTTACGTTGAAGGAACCTCAGAACC
 GCCTTCGGAGAAAGCGAGAGCAAGAACCTGTGGAGAGTCCCTGAGAGGCAGTCAGAATCGCCTGAGGAA
 GAAGCGCAGAGAGGAAGATTCTGCCGAACTGGGAGTGTCCAAATAGGCAGTGCCGAGCAGGACAGACCT
 CTCTGTAAGCAGGAGCCTGAGGCTAGTCAGGGACCAAGTGTCCAGTCAGAGACAGATGACATAGAAAATC
 AGTTGGAAGGAAAGGCGACTCAGGGAAATACAGAGGAAAACCCAGGGAAGCGGGCAAACCAAGCCTGA
 GTGTGAGGTTTACGACCCCAATGCCCTGTACTGCATCTGCCGCCAGCCTCACAACAACAGTTTTATGATC
 TGCTGTGATCGGTGTGAGGAGTGGTTCATGGTACTGTGTGGGTATTTCTGAGGCCGAGGGCGGCTCC
 TGGAAAGGAACGGGAAGACTACATCTGCCCAAATTCACCATTTTGAAGTGCAGGATGAGACAAAACGG
 TAGCGCCACCGATGAGCAGGACTCTGGTGCAGATCTGTGGTGTGATGGCACAGACTGCACAAGCATA
 GGGACAGTAGAGCAGAAGTCCGGAGAAGACCAGGGCATAAAGGGTAGGATTGAGAAGGCAGCAAAACCCCA
 CGGGCAAGAAAAAACAAGATATTCAGCCTGTCTGAGAGGCTCCTGGTGTCTAAATGCATTGGCC
 TGGGTGTTCCAGTGTAGCACAGCCTGACTCTGTATTGCAGTAATGACTGCATTCTCAAACACGCAGCA
 GCTACCATGAGATTTCTAAGTTCAGGTAAGAACAACAAAAACCAAGGAAAAGGTCAAGACGAAGC
 CAGAAAAGTTCAGTCTTCCAAAATGCAGTGTTCAGGTGGGGATTAATCTCTTCTGTGCACAAGAGACT
 AGCGTCAGAGAAAAGGAAAACCCAGTGAAGAAAGTGTGCTGGCTTCCAGGAGTGAAGTCTCTGGGAAG
 GAGGCAGCCTGTGAGAGCAGCACACCCTCTGGCAAGTACCACAACATAATGCTGTGAAGCCAGAGA
 AGCCAGAGAAGCCACTGCACTCTGCCACCCTATTGAGTAAATGTACGTATCACCCAAAGGCTGGCTT
 CCCAGGCCCTCCATCATCTGGGTGGCTGCCTGGGCTGTCTAGGACCAGAGTCTGGGTGTTCTGGTG
 CTGATAGTAGCCAGCAGCTCACTGCCAGCCAGAAGCAGATACCAAGATGCCTCTGGACCCAGGTGTTCC
 TGCTAGCCTGTGGAGCCTCTCTGGGTGGTTCCTAAAGAGCTGTGTAGGCCTCATGTTGGAGGCAATTC
 TTATTTAGTTTTAGGCCTTG

ACGCGTACGCGGCCGCTCGAGCAGAAACTCATCTCAGAAGAGGATCTGGCAGCAATGATATCCTGGATT
 ACAAGGATGACGACGATAAGGTTTAA

Protein Sequence:

>MR224814 representing NM_011805
 Red=Cloning site Green=Tags(s)

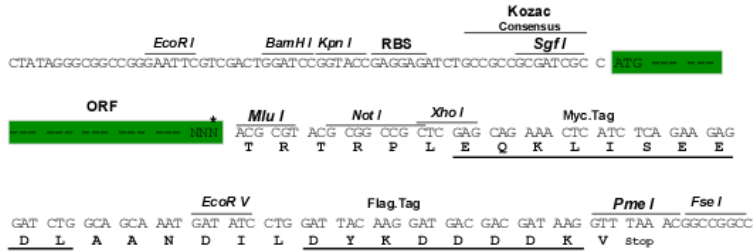
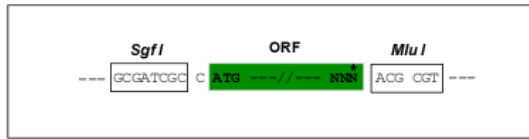
MDDKGHL SNEEAPKAIKPTSKEFRKTWGFRRRTIAKREGAGDTEVDPSEQQPQQHNL SLRRSGRQPKRTE
 RVEEFLTTVRRRGKKNVPVLSLEDSSEPTSSTVTDVETASEGSVESSEIRSGPVSDSLGKEHPASSEKAK
 GGEEEDTSDSDSGLTLKELQNRLRRKREQEPVERSLRGSQNRLRKKRREEDSAETGSVQIGSAEQDRP
 LCKQEPEASQGPVSQSETDDIENQLEKATQGNTENPREAGPKPECEVYDPNALYICRQPHNNRFMI
 CCDRCEEWFHGDVGI SEARGRL LERNGEDYICPNCTILQVQDETN SATDEQDSGCRSVGADGTDCTSI
 GTVEQKSGEDQGIKGRIEKAANPSGKKLKI FQPVVEAPGAPKCI GPGCSSVAQPDSVYCSNDCILKHA
 ATMRF LSSGKEQKTKPKKVKTKPEKFS LPKCSVQVGIKISSVHKRLASEKRENPKVVMLASRSETSGK
 EAACESSTPSWASDHNYNAVKPEKPEKPTAL SPTLLSKCTYHPKAGFPGPSHHLGGCLGLSRTRVLGVLV
 LIVASSSLPARSRYQDASGPQVFLPSLWLSGWFLKSCVGLMLEAISYFSFRPW

TRTRPLEQKLI SEEDLAANDILDYKDDDDKV

Restriction Sites: SgfI-MluI

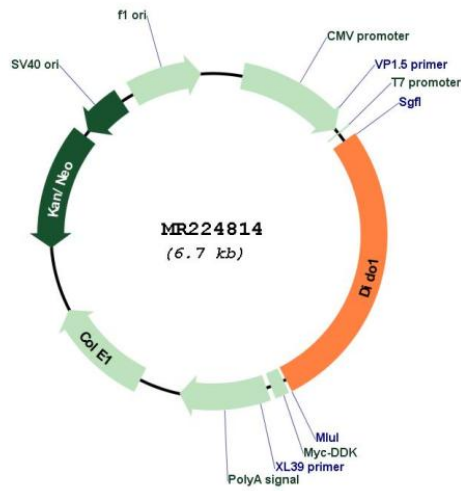
Cloning Scheme:

Cloning sites used for ORF Shuttling:



* The last codon before the Stop codon of the ORF

Plasmid Map:



ACCN: NM_011805

ORF Size: 1842 bp

OTI Disclaimer:	The molecular sequence of this clone aligns with the gene accession number as a point of reference only. However, individual transcript sequences of the same gene can differ through naturally occurring variations (e.g. polymorphisms), each with its own valid existence. This clone is substantially in agreement with the reference, but a complete review of all prevailing variants is recommended prior to use. More info
OTI Annotation:	This clone was engineered to express the complete ORF with an expression tag. Expression varies depending on the nature of the gene.
Components:	The ORF clone is ion-exchange column purified and shipped in a 2D barcoded Matrix tube containing 10ug of transfection-ready, dried plasmid DNA (reconstitute with 100 ul of water).
Reconstitution Method:	<ol style="list-style-type: none"> 1. Centrifuge at 5,000xg for 5min. 2. Carefully open the tube and add 100ul of sterile water to dissolve the DNA. 3. Close the tube and incubate for 10 minutes at room temperature. 4. Briefly vortex the tube and then do a quick spin (less than 5000xg) to concentrate the liquid at the bottom. 5. Store the suspended plasmid at -20°C. The DNA is stable for at least one year from date of shipping when stored at -20°C.
RefSeq:	NM_011805.3 , NP_035935.2
RefSeq Size:	4662 bp
RefSeq ORF:	1845 bp
Locus ID:	23856
UniProt ID:	Q8C9B9
Cytogenetics:	2 H4
MW:	67.8 kDa
Gene Summary:	This gene encodes a transcription factor involved in apoptosis. The encoded protein functions in cell cycle progression and plays a role in chromosomal stability. This protein regulates the self-renewal of embryonic stem cells. Disruption of this gene in mice causes symptoms similar to myelodysplastic/myeloproliferative diseases in humans. Mice lacking this gene show severely reduced fertility. Alternative splicing results in multiple transcript variants. [provided by RefSeq, Apr 2014]