

## Product datasheet for MR224802

### Myo1h (NM\_001164573) Mouse Tagged ORF Clone

#### Product data:

**Product Type:** Expression Plasmids  
**Product Name:** Myo1h (NM\_001164573) Mouse Tagged ORF Clone  
**Tag:** Myc-DDK  
**Symbol:** Myo1h  
**Synonyms:** 4631401O15Rik  
**Mammalian Cell Selection:** Neomycin  
**Vector:** pCMV6-Entry (PS100001)  
**E. coli Selection:** Kanamycin (25 ug/mL)  
**ORF Nucleotide Sequence:** >MR224802 representing NM\_001164573  
 Red=Cloning site Blue=ORF Green=Tags(s)

TTTTGTAATACGACTCACTATAGGGCGGCCGGAATTCGTCGACTGGATCCGGTACCGAGGAGATCTGCC  
 GCCCGATCGCC

ATGGAAGGGGCGCTCACCGCCAGGGACAAGGTTGGAGTGCAGGACTTTGTGCTATTGGATGCCTACACCA  
 GCGAGTCTGCCTTCTGGAGAATCTTCGCAAGCGTTTCCGAGAGAACCTCATCTATACATACATCGGGAC  
 ACTGCTTGTGTCTGTGAATCCGTACCAGGAGCTGGGAATCTATACTGCCAGCCAGATGGAACCTTACCAA  
 GGAGTCAACTTCTTTGAACTACCACCACATGTCTACGCCATCGCTGACAATGCCTATCGCATGATGTGCT  
 CGGAGCTGAACAACCACTTCATCCTCATTCTGGAGAGAGCGGAGCTGGGAAGACAGAGGCTCCAAGAA  
 GATCCTCCAGTACTTCGCGGTGACTTGTCCGATGACAGAGTCACTCCAAATAGCCCGAGACAGGCTGCTG  
 CTCTCCATTCCAGTCTGGAGGCTTTCGGAAATGCCAAGACCCTCCGTAACGACAACCTCCAGCAGATTTG  
 GGAAGTACATGGACATACAGTTCGACTTCCAGGGTGTTCCTGTAGGGCGCCACATCATCAGTTACTTGAT  
 CGAAAAGTCCCGAGTCTCTATCAAAACCACGGCGAGCGGAACTTCCACATCTTCTACCAGCTGCTAGCG  
 GGTGGTGGATCGGAGCGCCTCGCCTCCCTGGGACTCGAGCGAGACCCCGAGCTCTACAAGTACCTCTCGC  
 AGGGTCATTGTGCCAGAGAGTCCGCCATCAGTGACAAGAATGACTGGGAAACCGTGTGTGGTGCCTTTTC  
 TGTCAATGGTTTCACTGAAGCCGACCTTGAGAACCTCTTTGGGATCATCGCTAGTGTCTACACCTGGGC  
 AATGTTTTGTTTCAAGGGGACAAACAAGGCTGTGCCAGCGTCCCGGACACCCAGAAATCAAGTGGATTG  
 CCAAGTCTCGGGGTCTGCCCGGCTGTTCTTTTGGAAAGCTCTCACTCACAGGAAGATTGAAGCCAAAAC  
 AGAAGAGGTGATATGCCCGTTGACGGTAGAACTCTCTGTTTACGCCAGAGACGCCATGGCAAAGGCCGTT  
 TACGGGCGGACATTTACCTGGCTGGTTAATAGAATCAATTCTTCTTAGTTAACAAGGATTTACCCAAA  
 AGACTGTGATTGGGTTGTTGGACATCTATGGCTTCAAGTCTTTGACAAAAATGGTTTTGAACAGTTTTG  
 TATAAATTACTGCAATGAGAACTACAGCAGCTGCTGATAGAGAGGACGCTGAAGGCGGAGCAGGCCGAG  
 TATGAATCTGAAGCATTGAGTGGGAGACTGTCCAGTACTTCAACAACAAGATCATCTGTGACTTGGTGG  
 AAGAAAGACACAGAGGGATCATCTCTATTCTGGATGAAGAGTGTATCCGTCCTGGCCCCGACGGACTT  
 GAGTTTCTGGAGAAGCTGGAGGAGAAAGTGGGAAGCATGCGCACTTCAAACCCGGAAGCTGGCTGGT



[View online »](#)

CCAAAGGGCCGGAAGAGGATCGGCTGGCTGGAATTCTGCCTCCTGCATTACGCAGGAGAGGTTACCTACT  
 GCACCAAAGGATTTTTGGAGAAAAACAATGACCTGCTTTACAGACACCTGAAGGAGGTGCTGTGCAGCTC  
 CAAGAATAGCATCTTGAGGGAATGTTTCTGGTGGCGGAGCTTAAAAACCGGAGGAGACCGCCACGGTT  
 GGGACTCAGTTTAAAGAACAGCCTAAGCAGCCTCCTGAAATTCATCTCCAAGGAGCCTTCTACATCC  
 GCTGCATCAAGCCCAACGAGAGGAAGGAACCCAGCAAGTTTGACGACTTCTCATCAGCCATCAGATCAA  
 GTACCTGGGGCTAATGGAGCACCTGCGTGTGCGGAGGGCGGGCTTCGCCTACAGGCGCAAGTACGAGCAT  
 TTCCTGCAAAGGTACAAGTCGCTGTGCCAGACACCTGGCCGCACTGGCACGGACCTCCAGGAGAGGGCG  
 TCGAGCGGCTGATCAAGTATATTGGCTACCAACCTCAGGACTACAAGTTAGGAAAAACCAAAATATTTCAT  
 TCGATTCCCCAGAACCCTGTTTGTACTGAAGATGCTTTTGAATTCAGTAAACATCAATTAGTGTCAAGA  
 ATCCAGGCCACGTACAAAGGCTGCCTAGGGAGAAGGGAGTACATGAAGAAGAGACAAGCAGCCACCAAGT  
 TAGAAGCCCACTGGCGTGGAGTCTGGCTCGGAAGGAGATCAAGAGAAGAAGGTGGGCGGTGCAGATCAT  
 ACGGAGGTTTCGTAAGGGTTTCATCAACCGTGACAAACCCTTTGCTGACAATGAGGAGTTCGTAGTG  
 CTTGTGAGGAAAAATTACATCCTGAATCTTCGCTACCATGTGCCGAAGAAGCTGCTGGATAAGAGCTGGC  
 TGAGGCCCTCCGGGCATCCTGAAAAATGCTTCCAATCTGCTGAGGAGGATGTGCACCAGGAACCTTGTTCG  
 GAAGTACTGCCGTGGAATCTCAGCCGAGAGGAAAGCCATGATGCAGCAAAAGGTGTCACGAGCGAGATA  
 TTCCGGGGGAAGAAGGAAGGCTATGCAGAGAGCTTGAACCAACTGTTTGCAGGCAGCCGACTGGATGAAA  
 GCAACATAAAATCCAAAGTGTCTCAACTGCTTGGCAGTGAGAAAAATCCAGTATGGCGTCCCGGTATCAA  
 GTATGACAGGAAGGGCTTCAAGGCACGGCAGCGCAACTCCTCCTCACACAGAGGTGAGCATACTGGTG  
 GAGCTTTCCAAAGTCAAGCAGAAGATAGAGTATGCAGCCGTGAGAGGCGTCTCCACCAGCAGCCTCAGCG  
 ATGGAATCTTGGTCATTACATCTCACCAGCGGACAAACAGCAAAAGGGGGACGTATCTGCAGTGTGA  
 ACACATATTTGAGGTGGCCACTAAGCTCGCCATGCTCATAAGGAAGGAGCACACCGTCCGTGTTGTCCAG  
 GGAAGTTTACAGTTCTACGTGCTCCTGGGAGAGAAGGCACGATAGTTTTTGAGACTGGAGAGGAAGACC  
 AAGTCTATAAAGATAAAAACGGACAGTTAAGAGTGGTGTCCGCAGGGAAGAAAACC

ACGCGTACGCGGGCGCTCGAGCAGAACTCATCTCAGAAGAGGATCTGGCAGCAATGATATCCTGGATT  
 ACAAGGATGACGACGATAAGGTTTAA

**Protein Sequence:**

>MR224802 representing NM\_001164573  
 Red=Cloning site Green=Tags(s)

MEGALTARDKVGVDVFLLDAYTSESAFLENLRKRFRENLIYTYIGTLLVSNPNYQELGIYTASQMELYQ  
 GVNFFELPPHYAIADNAYRMMCSLENNHFILISGESGAGKTEASKKILQYFAVTCPMTESLQIARDRL  
 LSIPVLEAFGNAKTLRNDNSSFYKYMIDQDFQGVVPGGHIISYLIKSRVYVQNHGERNFHIFYQLLA  
 GGGSERLASLGLERDPQLYKYLQGHCARESPIISKNDWETVCGAFSVIGFTEADLENLFGIIASVHLG  
 NVCFKGDQGCASVPDTHEIKWIAKLLGVCPVLLLEALTHRKIEAKTEEVICPLTVELSVYARDAMAKAV  
 YGRFTFWLVNRINSSLVNDFTQKTIVIGLLDIYGFVFDKNGFEQFCINYCNEKLQQLLIERTLKAQAE  
 YESEGIEWETVQYFNKIIICDLVEERHRGIIISILDEECIRPGPATDLSFLEKLEEKVGHAFQTRKLAG  
 PKGRKRIGWLEFCLLHYAGEVTYCTKGFLEKNNDLLYRHLKEVLCSSKNSILRECFVLAELNRRRPPTV  
 GTQFKNSLSSLEILISKEPSYIRCIKPNRKEPSKFDDFLISHQIKYLGMEHLRVRRAGFAYRRKYEH  
 FLQRYKSLCPDTPHWHGPPGEGVERLIKYIGYQPQDYKLGKTKIFIRFPRTL FATEDAFEFKSHQLVSR  
 IQATYKGLGRREYMKRQAATKLEAHWRGVLARKEIKRRRWAVQIIRRFVKGFINRDKPLCPDNEEFVV  
 LVRKNIYILNLRHYVKNVLDKSWLRPPGILENASNLLRRMCTRNLRVRYKRGISAERKAMMQQKVVSTSEI  
 FRGKKEGYAESLNLQFAGSRLDESINPKVLQLLGSEKIYQGVPIKYDRKGFARQRQLLLTQRSAYLV  
 ELSKVKQKIEYAAVRGVSTSSLDGILVIHISPADKQKQGDVILQCEHIFEVATKLAMLIRKEHTVRVVQ  
 GSLQFYVSPGREGTIVFETGEEDQVYKDKNGQLRVVSAGKKT

TRTRPLEQKLISEEDLAANDILDYKDDDDKV

**Chromatograms:**

[https://cdn.origene.com/chromatograms/ja1869\\_d06.zip](https://cdn.origene.com/chromatograms/ja1869_d06.zip)

**Restriction Sites:**

SgfI-MluI

Cloning Scheme:



ACCN: NM\_001164573

ORF Size: 3066 bp

OTI Disclaimer: Due to the inherent nature of this plasmid, standard methods to replicate additional amounts of DNA in E. coli are highly likely to result in mutations and/or rearrangements. Therefore, OriGene does not guarantee the capability to replicate this plasmid DNA. Additional amounts of DNA can be purchased from OriGene with batch-specific, full-sequence verification at a reduced cost. Please contact our customer care team at [custsupport@origene.com](mailto:custsupport@origene.com) or by calling 301.340.3188 option 3 for pricing and delivery.

The molecular sequence of this clone aligns with the gene accession number as a point of reference only. However, individual transcript sequences of the same gene can differ through naturally occurring variations (e.g. polymorphisms), each with its own valid existence. This clone is substantially in agreement with the reference, but a complete review of all prevailing variants is recommended prior to use. [More info](#)

OTI Annotation: This clone was engineered to express the complete ORF with an expression tag. Expression varies depending on the nature of the gene.

Components: The ORF clone is ion-exchange column purified and shipped in a 2D barcoded Matrix tube containing 10ug of transfection-ready, dried plasmid DNA (reconstitute with 100 ul of water).

**Reconstitution Method:**

1. Centrifuge at 5,000xg for 5min.
2. Carefully open the tube and add 100ul of sterile water to dissolve the DNA.
3. Close the tube and incubate for 10 minutes at room temperature.
4. Briefly vortex the tube and then do a quick spin (less than 5000xg) to concentrate the liquid at the bottom.
5. Store the suspended plasmid at -20°C. The DNA is stable for at least one year from date of shipping when stored at -20°C.

**RefSeq:** [NM\\_001164573.2](#)

**RefSeq Size:** 4631 bp

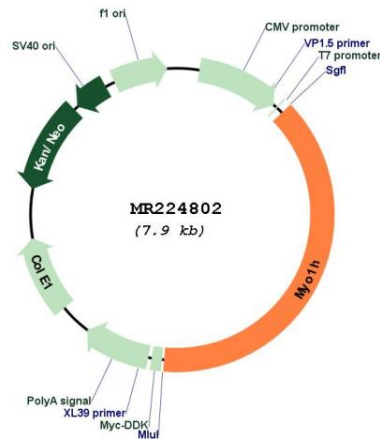
**RefSeq ORF:** 3069 bp

**Locus ID:** 231646

**Cytogenetics:** 5 F

**MW:** 117.8 kDa

**Product images:**



Circular map for MR224802