

Product datasheet for MR224793

Hsd17b3 (NM_008291) Mouse Tagged ORF Clone

Product data:

Product Type:	Expression Plasmids
Product Name:	Hsd17b3 (NM_008291) Mouse Tagged ORF Clone
Tag:	Myc-DDK
Symbol:	Hsd17b3
Mammalian Cell Selection:	Neomycin
Vector:	pCMV6-Entry (PS100001)
E. coli Selection:	Kanamycin (25 ug/mL)
ORF Nucleotide Sequence:	>MR224793 representing NM_008291 Red=Cloning site Blue=ORF Green=Tags(s)

TTTTGTAATACGACTCACTATAGGGCGGCCGGAATTCGTCGACTGGATCCGGTACCGAGGAGATCTGCC
GCC**CGATCGCC**

ATGGAGAAGCTCTTCATTGCTGCAGGGCTCTTCGTGGCCTGGTTTGCCTGGTGAAGTGCATGAGGTTCT
CGCAGCACCTTTTTCTGAGGTTCTGCAAGGCTTTGCCAAGCTCTTCTCGCATCAATGGGACAATGGGC
AGTGATTACCGGAGCAGGCGATGGCATCGGAAAGCCTATTCATTTGAGTTGGCCAGACATGGACTCAAT
GTTGTACTTATTAGTCGGACACTGGAAAAGCTACAGACCATTGCAGAAGAGATTGAGAGGACCCTGGAA
GCTGTGTGAAGATTGTACAAGCAGATTTTACCAGAGAAGACATCTATGACCATATTAAGAACACCTTGA
AGGCTTAGAAATAGGAATTTTAGTCAACAACGTTGGAATGCTCCCGAGCTTTTTCCCAAGCCATTTCTGT
AGCACTTCCGGTGAGAGCCAGAATCTCATCCACTGCAACATTACCTCCGTAGTCAAGATGACACAGCTTG
TTCTCAAACACATGGAGTCAAGGAGGAAAGGCCTCATCTTGAATATTTCTTCAGGCGCAGCCCTTCGTCC
CTGGCCTCTTTACAGCCTGTAAGTCAAGGAGGAAAGGCCTCATCTTGAATATTTCTTCAGGCGCAGCCCTTCGTCC
GAATACAGAGATAAAGGAATCATTATTCAGGTGCTGACCCCTTATTCTATTTCAACCCCAATGACAAAGT
ACCTAAATAACAAGATGACCAAGACCGCCGATGAGTTTGTAAAGAATCCTTGAATATGTCACGATCGG
AGCTGAATCCTGTGGCTGCCTTGCTCATGAAATCATTGCAATAATTCTGAACCGGATCCCTTCAGAATC
TTCTATAGCAGCACCGCTCAACGATTCTCTGACACGATACTCAGATTACCTCAAACGCAACATCAGCA
ACAGA

ACGCGTACGCGGCCGCTCGAGCAGAAACTCATCTCAGAAGAGGATCTGGCAGCAAATGATATCCTGGATT
ACAAGGATGACGACGATAAGGTTTAA



[View online »](#)

Protein Sequence: >MR224793 representing NM_008291
 Red=Cloning site Green=Tags(s)

MEKLFIAAGLVGLVCLVKCMRFSQHLFLRFCKALPSSFLRSMGQWAVITGAGDGIGKAYSFELARHGLN
 VVLISRTLEKLQIAEEIERTTGSCVKIVQADFREDIYDHIKEHLEGLEIGILVNNVGMPLSPFFPSHFL
 STSGESQNL IHCNITSVVKMTQLVLKHMESRRKGLILNISGAALRPWPLYSLYSASKAFVYTFKALSV
 EYRDKGIIIQVLTPYSISTPMTKYLNNKMTKTADEFVKESLKYVTIGAESCGLAHEIIAIIILNRIPSRI
 FYSSTAQRFLLLTRYSDYLRNINR

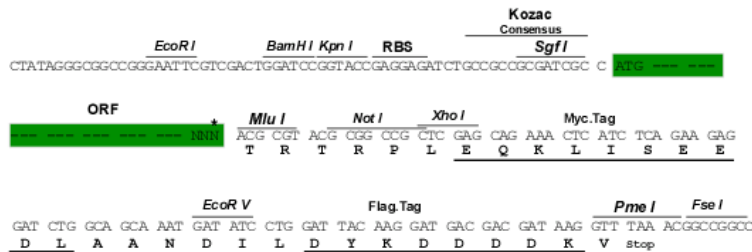
TRTRPLEQKLISEEDLAANDILDYKDDDDKV

Chromatograms: https://cdn.origene.com/chromatograms/mm9023_e12.zip

Restriction Sites: SgfI-MluI

Cloning Scheme:

Cloning sites used for ORF Shuttling:



* The last codon before the Stop codon of the ORF

ACCN: NM_008291

ORF Size: 915 bp

OTI Disclaimer: The molecular sequence of this clone aligns with the gene accession number as a point of reference only. However, individual transcript sequences of the same gene can differ through naturally occurring variations (e.g. polymorphisms), each with its own valid existence. This clone is substantially in agreement with the reference, but a complete review of all prevailing variants is recommended prior to use. [More info](#)

OTI Annotation: This clone was engineered to express the complete ORF with an expression tag. Expression varies depending on the nature of the gene.

Components: The ORF clone is ion-exchange column purified and shipped in a 2D barcoded Matrix tube containing 10ug of transfection-ready, dried plasmid DNA (reconstitute with 100 ul of water).

Reconstitution Method:

1. Centrifuge at 5,000xg for 5min.
2. Carefully open the tube and add 100ul of sterile water to dissolve the DNA.
3. Close the tube and incubate for 10 minutes at room temperature.
4. Briefly vortex the tube and then do a quick spin (less than 5000xg) to concentrate the liquid at the bottom.
5. Store the suspended plasmid at -20°C. The DNA is stable for at least one year from date of shipping when stored at -20°C.

RefSeq: [NM_008291.3](#), [NP_032317.2](#)

RefSeq Size: 1286 bp

RefSeq ORF: 918 bp

Locus ID: 15487

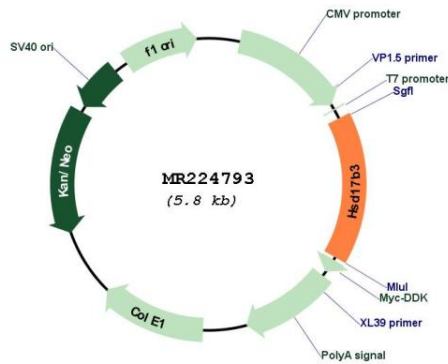
UniProt ID: [P70385](#)

Cytogenetics: 13 B3

MW: 34.8 kDa

Gene Summary: Favors the reduction of androstenedione to testosterone. Uses NADPH while the two other EDH17B enzymes use NADH.[UniProtKB/Swiss-Prot Function]

Product images:



Circular map for MR224793