

## Product datasheet for **MR224769**

### **Pde4b (NM\_019840) Mouse Tagged ORF Clone**

#### **Product data:**

Product Type:	Expression Plasmids
Product Name:	Pde4b (NM_019840) Mouse Tagged ORF Clone
Tag:	Myc-DDK
Symbol:	Pde4b
Synonyms:	Dpde4; dunce; R74983
Mammalian Cell Selection:	Neomycin
Vector:	pCMV6-Entry (PS100001)
E. coli Selection:	Kanamycin (25 ug/mL)



[View online »](#)

**ORF Nucleotide Sequence:**

>MR224769 representing NM\_019840  
 Red=Cloning site Blue=ORF Green=Tags(s)

TTTTGTAATACGACTCACTATAGGGCGGCCGGGAATTCGTCGACTGGATCCGGTACCGAGGAGATCTGCC  
 GCC**CGGATCGCC**

ATGACAGCAAAAAATTCTCCAAAAGAATTTACTGCTTCGGAATCTGAGGTTTGCATAAAGACTTTCAAGG  
 AGCAGATGCGCTTGGAACTTGAGCTTCCAAAGCTACCAGGAAACAGACCTACATCTCCAAAAATTTCTCC  
 ACGCAGTTCACCAAGGAATTCACCATGCTTTTTTCAGAAAGTTGCTGGTGAATAAAAAGCATCCGACAGCGG  
 CGTCGCTTACGGTGGCTCATACATGCTTTGATGTGAAAATGGCCCTTCTCCAGGTCGGAGCCCACTGG  
 ACCCTCAAGCCGGCTCTTCGTCGGGACTGGTACTTCATGCCGCCTTTCTGGGCACAGCCAGCGCAGGGA  
 GTCGTTCTCTACAGATCTGACAGCGACTATGACTTGTCAACAAAAGCGATGTCCAGGAACCTCATCACTT  
 CCCAGTGAGCAACACGGCGATGACCTGATTGTCACTCCTTTGCCAGGTTCTTGCCAGCTTGCAGAGTG  
 TAAGAAACAACCTCACCCCTGCTGACGAACCTTCATGGAGCGCCGAACAAGAGGTCACCAGCGGCTAGTCA  
 GGCTCCAGTCTCCAGAGTCAGCCTGCAAGAAGAATCATATCAGAAACTAGCAATGGAGACGCTGGAGGAA  
 CTAGACTGGTGCCTAGACCAGCTAGAGACCATCCAGACCTACCGCTCTGTGAGCGAGATGGCTTCAAAACA  
 AGTTCAAAGGATGCTGAACCGGGAGCTGACACACCTCTCAGAGATGAGCAGATCAGGGAACCGGTGTC  
 TGAGTACATTTCAAACACGTTCTTAGACAAGCAGAACGATGTGGAAATCCCATCTCCACGCAGAAGGAC  
 AGGGAGAAGAAGAAGCAGCAGCTCATGACCCAGATAAGTGGAGTGAAGAAACTGATGCACAGCTCAA  
 GCCTGAACAACACAAGCATCTCACGCTTCGGAGTCAACACGAAAATGAGGATCATCTAGCCAAGGAGCT  
 GGAAGACCTGAACAAATGGGGCCTTAACATCTTCAATGTGGCTGGTACTCACATAATCGGCCCTTACG  
 TGCATCATGTATGCAATATTCAGGAAAGAGACCTTCTGAAGACGTTTAAATCTCATCTGACACCTTTG  
 TAACCTACATGATGACTTTAGAAGACCATTACCATTCTGATGTGGCATATCACAACAGCCTGCATGCTGC  
 TGACGTGGCCAGTCAACTCACGTTCTCCTTTCTACGCCGCACTGGATGCTGTCTTACAGACCTGGAA  
 ATCCTGGCTGCCATTTTTGCAGCTGCCATCCATGATGTCGATCATCCTGGAGTCTCCAATCAGTTTCTCA  
 TCAATACAAATCTGAACTTGCTTTGATGTATAATGATGAATCTGTTCTGGAAAACCATCACCTTGCTGT  
 GGGATTCAAATTGCTACAAGAGGAACACTGCGACATCTTTCAGAACTTACCAAGAAGCAACGCCAGACA  
 CTCAGGAAAATGGTGATTGACATGGTGTGGCAACTGATATGTCCAAACACATGAGCCTCCTGGCAGACC  
 TTAACAATGGTAGAAACCAAGAAGGTGACAAGCTCCGGTGTCTCCTCCTGGACAATACTGACCG  
 GATACAGGTTCTTCGCAACATGGTACACTGTGCAGACCTGAGCAACCCCAAGTCTTGGAAATGAT  
 CGGCAATGGACCGATCGTATCATGGAGGAGTTTTCCAGCAGGGAGACAAAGAACGGGAGAGGGGAATGG  
 AGATTAGCCCAATGTGTGATAAGCACACAGCTTCTGTGAAAAATCCCAGTTGGTTTCATTGACTACAT  
 TGTCCATCCACTGTGGGAGACCTGGGCAGACCTGGTTCAACCGGATGCTCAAGATATTCTGGATACACTA  
 GAAGATAACAGGAACTGGTACCAGAGTATGATACCCAGAGCCCTTCCCAGCCACTGGATGAGAGGAGCA  
 GGGACTGCCAAGGCTGATGGAGAAGTTTCAGTTTGAACCTGACCCCTTGAGGAAGAGGATTCTGAGGGACC  
 GGAAAAGGAGGGAGAAGGCCACAGCTATTTCCAGCAGCACAAGACGCTTTGTGTGATTGATCCAGAGAAC  
 AGGGATTCTCTGGAAGAGACTGACATAGACATTGCAACAGAAGACAAGTCTCCGATCGACACA

**ACGCGT**ACGCGGCCGCTCGAGCAGAAACTCATCTCAGAAGAGGATCTGGCAGCAAATGATATCCTGGATT  
 ACAAGGATGACGACGATAAGGTTTAA

**Protein Sequence:** >MR224769 representing NM\_019840  
 Red=Cloning site Green=Tags(s)

```
MTAKNSPKEFTASESEVCIKTFKEQMRLELELPKLPGNRPTSPKISPRSSPRNSPCFFRKLNVNKSIRQR
RRFTVAHTCFDVENGPSPGRSPLDPQAGSSSGLVLHAAFPGHSQRRESFLYRSDSDYDLSPKAMSRNSSL
PSEQHGDDLIVTPFAQVLASLRVNRNFTLLTNLHGAPNKRSPAASQAPVSRVSLQEEESYQKLAMETLEE
LDWCLDQLETIQTYRSVSEMASNFKRMLNRELTHLSEMSRSGNQVSEYISNTFLDKQNDVEIPSPTQKD
REKKKKQQLMTQISGVKLMHSSSLNNTSISRFGVNTENEDHLAKELEDLNKWGLNIFNVAGYSHNRPLT
CIMYAIQERDLLKTFKISSDTFVYMMTLEDHYHSDVAYHNSLHAADVAQSTHVLLSTPALDAVFTDLE
ILAAIFAAAIHDVDHPGVSNQFLINTNSELALMYNDESVLENHHLAVGFKLLQEEHCDFQNLTKKQRQT
LRKMVIDMVLATDMSKHMSSLADLKTMMVETKKVTS SSVLLLDNYTDRIQVLRNMVHCADLSNPTKSELEY
RQWTDRIEMEEFFQQGDKERERGMEISPMCDKHTASVEKSQVGFIDYIVHPLWETWADLVQPAQDILDTL
EDNRNWFQSMIPQSPSPPLDERSRDCQGLMEKQFELTLEEEDSEGPEKEGEGHSYFSSTKTLVIDPEN
RDSLEETDIDIATEDKSPIDT
```

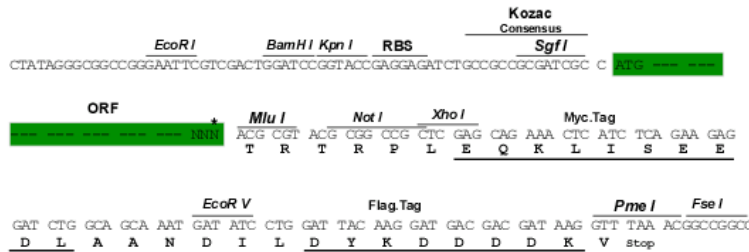
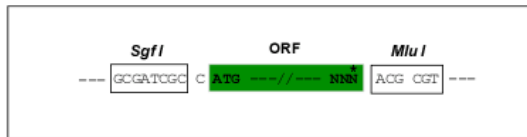
TRTRPLEQKLISEEDLAANDILDYKDDDDKV

**Restriction Sites:**

SgfI-MluI

**Cloning Scheme:**

Cloning sites used for ORF Shuttling:



\* The last codon before the Stop codon of the ORF

**ACCN:** NM\_019840

**ORF Size:** 2163 bp

**OTI Disclaimer:** The molecular sequence of this clone aligns with the gene accession number as a point of reference only. However, individual transcript sequences of the same gene can differ through naturally occurring variations (e.g. polymorphisms), each with its own valid existence. This clone is substantially in agreement with the reference, but a complete review of all prevailing variants is recommended prior to use. [More info](#)

**OTI Annotation:** This clone was engineered to express the complete ORF with an expression tag. Expression varies depending on the nature of the gene.

**Components:** The ORF clone is ion-exchange column purified and shipped in a 2D barcoded Matrix tube containing 10ug of transfection-ready, dried plasmid DNA (reconstitute with 100 ul of water).

- Reconstitution Method:**
1. Centrifuge at 5,000xg for 5min.
  2. Carefully open the tube and add 100ul of sterile water to dissolve the DNA.
  3. Close the tube and incubate for 10 minutes at room temperature.
  4. Briefly vortex the tube and then do a quick spin (less than 5000xg) to concentrate the liquid at the bottom.
  5. Store the suspended plasmid at -20°C. The DNA is stable for at least one year from date of shipping when stored at -20°C.

**RefSeq:** [NM\\_019840.2](#), [NP\\_062814.2](#)

**RefSeq Size:** 4371 bp

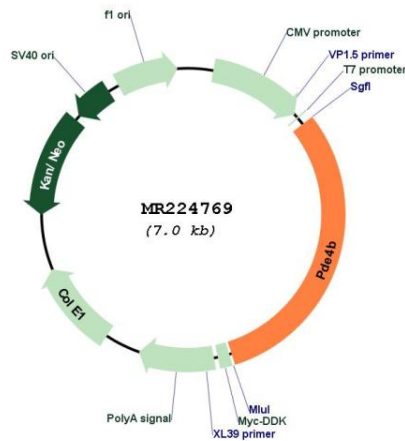
**RefSeq ORF:** 2166 bp

**Locus ID:** 18578

**Cytogenetics:** 4 46.99 cM

**MW:** 82.5 kDa

**Product images:**



Circular map for MR224769