

Product datasheet for **MR224748**

Nrp2 (NM_001077404) Mouse Tagged ORF Clone

Product data:

Product Type:	Expression Plasmids
Product Name:	Nrp2 (NM_001077404) Mouse Tagged ORF Clone
Tag:	Myc-DDK
Symbol:	Nrp2
Synonyms:	1110048P06Rik; Np-2; Np2; Npn-2; Npn2
Mammalian Cell Selection:	Neomycin
Vector:	pCMV6-Entry (PS100001)
E. coli Selection:	Kanamycin (25 ug/mL)



[View online »](#)

ORF Nucleotide
Sequence:

>MR224748 representing NM_001077404
 Red=Cloning site Blue=ORF Green=Tags(s)

TTTTGTAATACGACTCACTATAGGGCGGCCGGAATTCGTCGACTGGATCCGGTACCGAGGAGATCTGCC
 GCC**CGGATCGCC**

ATGGATATGTTTCTCTTACCTGGGTTTTCTAGCTCTGTACTTTTCAGGACACGAAGTGAAGAAGCCAGC
 AAGATCCACCCTGCGGAGGTCGGCTGAATTCAAAGATGCTGGCTACATCACTTCCCAGGCTACCCCA
 GGACTATCCCTCCCACCAGAAGTGTGAGTGGATTGTCTACGCCCCGAACCAACCAAGAAGATTGTTCTC
 AACTTCAACCCTCACTTTGAAATCGAGAAAACGACTGCAAGTATGACTTCATTGAGATTCGGGATGGG
 ACAGTGAGTCAGCTGACCTCCTGGGCAAGCACTGTGGAAACATCGCCCCGCCACCATCATCTCCTCAGG
 CTCCGTGTTATACATCAAGTTCACCTCAGACTACGCCCGCAGGGGGCAGGTTTTCTCTACGCTATGAG
 ATCTTCAAACAGGCTCTGAAGATTGTTCCAAGAACTTTACAAGCCCAATGGGACCATTGAATCTCCAG
 GGTTTCCAGAGAAGTATCCACACAATCTGGACTGTACCTTACCATCCTGGCCAAACCCAGGATGGAGAT
 CATCTACAGTTCCTGACCTTTGACCTGGAGCATGACCCTCTACAAGTGGGGGAAGGAGACTGTAATAT
 GACTGGCTGGACATCTGGGATGGCATTCCACATGTTGGACCTCTGATTGGCAAGTACTGTGGGACGAAAA
 CACCCTCAAACCTCCGCTCGTCCACGGGGATCCTCTCCTTGACCTTTACACGGACATGGCAGTGGCCAA
 GGATGGCTTCTCCGCACGTTACTATTTGATCCACCAGGAGCCACCTGAGAATTTTCAGTGAATGTCCCT
 TTGGGAATGGAGTCTGGCCGGATTGCTAATGAACAGATCAGTGCCTCCTCCACCTTCTCTGATGGGAGGT
 GGACTCCTCAACAGAGCCGGCTCCATGGTGTGACAATGGCTGGACACCAATTTGGATTCCAACAAGGA
 GTATCTCCAGGTGGACCTGCGCTTCTAACCATGCTCACAGCCATTGCAACACAGGGAGCCATTTCCAGG
 GAAACCCAGAAAGGCTACTACGTCAAATCGTACAAGCTGGAAGTCAAGCAAAATGGTGAAGATTGGATGG
 TCTACCGCATGGCAAAAACCAAGATATTTCCAAGCAACAATGATGCGACCCAGGTTGGTGTCTAAACAA
 GCTCCACATGCCACTGCTGACTCGGTTTCATCAGGATCCGCCCGCAGACGTGGCATTGGGCATTGCCCTT
 CGCTGGAGCTCTTTGGCTGCCGGTTCACAGATGCACCCTGCTCCAACATGCTGGGGATGCTCTCGGGCC
 TCATTGCTGATACCCAGATCTCTGCCTCCTCCACCCGAGAGTACCTCTGGAGCCCCAGTGTGCCCGCT
 GGTTAGTAGCCGCTCTGGCTGGTTTCTCGGAACCCTCAAGCCAGCCAGGTGAAGAATGGCTTCAGGTA
 GACCTGGGACACCAAGACAGTAAAGGGTTCATCATCCAGGGAGCCGAGGAGGAGACAGCATCACTG
 CCGTGAAGCCAGGGCTTTGTACGCAAGTTCAAAGTCTCTACAGCCTAAATGGCAAGGACTGGGAATA
 TATCCAGGACCCAGGACTCAGCAGACAAAGCTGTTTGAAGGGAACATGCACTATGACACCCTGACATC
 CGAAGGTTTCGATCCTGTTCCAGCGCAGTATGTGCGGGTGTACCCAGAGAGGTGGTCGCCAGCAGGATCG
 GGATGAGGCTGGAGGTGCTGGGCTGTGACTGGACAGACTCAAAGCCACAGTGGAGACGCTGGGACCCAC
 CGTGAAGAGTGAAGAGACTACCACCCATATCCCATGGATGAGGATGCCACCGAGTGTGGGGAAAATGC
 AGCTTTGAGGATGACAAAGATTTGCAACTTCTTCAGGATTCAACTGCAACTTTGATTTTCCGGAAGAGA
 CCTGTGGTTGGGTGTACGACCATGCCAAGTGGCTCCGGAGCACGTGGATCAGCAGCGTAACCCCAATGA
 CAGAACATTTCCAGATGACAAGAAGTCTTGAAGTGCAGAGTGTGGCCGACGAGAGGGCCAGTACGGG
 CGGCTCATCAGCCACCGGTGCACCTGCCCCGAAGCCCTGTGTGCATGGAGTTCAGTACCAAGCCATGG
 GCGGCCACGGGTGGCACTGCAGGTGGTTCGGGAAGCCAGCCAGGAAAGCAAACCTTTGGGTGATCCG
 TGAGGACCAGGGCAGCGAGTGAAGCACGGGCGCATTATCCTGCCAGCTATGACATGGAGTATCAGATC
 GTTTCGAGGGAGTGATAGGGAAGGGACGATCCGGAGAGATTTCCATCGATGACATTGGATAAGCACTG
 ATGTCCCACTGGAGAAGTGCATGGAACCATATCAGCTTTTGCAGTGGACATCCCAGAAACCCATGGGGG
 AGAGGGCTATGAAGATGAGATTGATGATGAATATGAAGGAGATTGGAGCAACTCTTCTCTCTACCTCA
 GGGGCTGGTGACCCCTCATCTGGCAAAGAAAAGAGCTGGCTGTACACCCTAGATCCCATTCTGATACCA
 TCATCGCCATGAGCTCGCTGGGGTCTGCTGGGGCCACCTGTGCGGGCCTCCTCTTACTGCACCTG
 CTCCTATTCGGTCTGAGTTCGAGGAGCTGCACCACACTGGAGAACTACAACCTTTGAGCTCTACGATGGC
 CTCAGACAAGGTCAAGATCAATCATCAGAAGTGTCTCGGAGGCA

ACGCGTACGCGGCCGCTCGAGCAGAAACTCATCTCAGAAGAGGATCTGGCAGCAAATGATATCCTGGATT
 ACAAGGATGACGACGATAAAGTTTAA

Protein Sequence: >MR224748 representing NM_001077404
 Red=Cloning site Green=Tags(s)

MDMFPLTWVFLALYFSGHEVRSQQDPPCGGRLNSKDAGYITSPGYPDYPSHQNCEWIVYAPEPNQKIVL
 NFNPHFEIEKHDCYDFIEIRDGSEADLLGKHCGNIAPPTIISSGSVLYIKFTSDYARQGAGFSLRYE
 IFKTGSEDCSKNFTSPNGTIESPGFPEKYPHNLDCTFTTILAKPRMEIILQFLTFDLEHDPLQVGEQDCKY
 DWLDIWDGIPHVGLIGKYCGTKTPSKLRSSTGILSLTFHTDMAVAKDGFSAARYLIHQEPPENFQCNPV
 LGMESGRIANEQISASSTFSDGRWTPQQSRLHGDDNGWTPNLDNSKEYLQVDLRFMTLTAIATQGAISR
 ETQKGYYVKSYLEVSTNGEDWMVYRHGKNHKIFQANNDATEVVLNKLHMPLLTRFIRIRPQTWHLGIAL
 RLELFGCRVTDAPCSNMLGMLSGLIADTQISASSTREYLWSPAARLVSSRSGWFRNPQAQPGEEWLQV
 DLGTPKTVKGVIIQGARGGDSITAVEARAFVRKFKVSYSLNGKDWEYIQDPRTPQTKLFEKNMHDYTPDI
 RRFDPVPAQYVRYPERWSPAGIGMRLEVLGCDWTDKPTVETLGPVKSEETTPYPMDEATECGENC
 SFEDDKDLQLPSGFNCNDFPEETCGWVYDHAKWLRSTWISSANPNDRTPDDKNFLKLQSDGRREGQYG
 RLISPPVHLPRSPVCMFQYQAMGGHVALQVREASQESKLLWVIREQDQSEWKHGRIILPSYDMEYQI
 VFEVIGKGRSGEISIDDIRISTDVPLENCMEPISAFVDIPETHGGEGYEDEIDDEYEGDWSNSSSSTS
 GAGDPSSGKEKSWLYTLDPILITIIAMSSLGVLLGATCAGLLLYCTCSYGLSSRSCTTLENYNFELYDG
 LKHVKVINHQKCCSEA

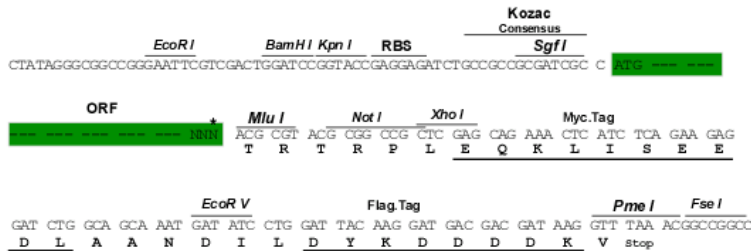
TRTRPLEQKLISEEDLAANDILDYKDDDDKV

Chromatograms: https://cdn.origene.com/chromatograms/mm9003_a11.zip

Restriction Sites: SgfI-MluI

Cloning Scheme:

Cloning sites used for ORF Shuttling:

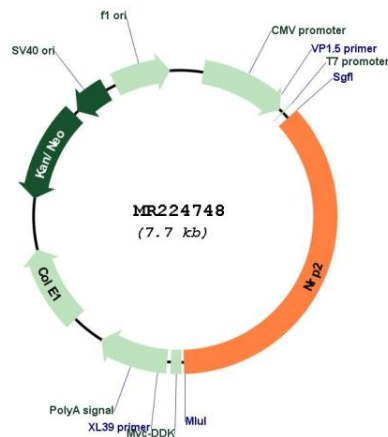


* The last codon before the Stop codon of the ORF

ACCN: NM_001077404

ORF Size: 2778 bp

OTI Disclaimer:	The molecular sequence of this clone aligns with the gene accession number as a point of reference only. However, individual transcript sequences of the same gene can differ through naturally occurring variations (e.g. polymorphisms), each with its own valid existence. This clone is substantially in agreement with the reference, but a complete review of all prevailing variants is recommended prior to use. More info
OTI Annotation:	This clone was engineered to express the complete ORF with an expression tag. Expression varies depending on the nature of the gene.
Components:	The ORF clone is ion-exchange column purified and shipped in a 2D barcoded Matrix tube containing 10ug of transfection-ready, dried plasmid DNA (reconstitute with 100 ul of water).
Reconstitution Method:	<ol style="list-style-type: none"> 1. Centrifuge at 5,000xg for 5min. 2. Carefully open the tube and add 100ul of sterile water to dissolve the DNA. 3. Close the tube and incubate for 10 minutes at room temperature. 4. Briefly vortex the tube and then do a quick spin (less than 5000xg) to concentrate the liquid at the bottom. 5. Store the suspended plasmid at -20°C. The DNA is stable for at least one year from date of shipping when stored at -20°C.
RefSeq:	<u>NM_001077404.1, NP_001070872.1</u>
RefSeq Size:	6724 bp
RefSeq ORF:	2781 bp
Locus ID:	18187
Cytogenetics:	1 C2
MW:	104.5 kDa
Gene Summary:	High affinity receptor for semaphorins 3C, 3F, VEGF-165 and VEGF-145 isoforms of VEGF, and the PLGF-2 isoform of PGF.[UniProtKB/Swiss-Prot Function]

Product images:


Circular map for MR224748