

Product datasheet for MR224739

Wnt10b (NM_011718) Mouse Tagged ORF Clone

Product data:

Product Type:	Expression Plasmids
Product Name:	Wnt10b (NM_011718) Mouse Tagged ORF Clone
Tag:	Myc-DDK
Symbol:	Wnt10b
Synonyms:	Wnt12
Mammalian Cell Selection:	Neomycin
Vector:	pCMV6-Entry (PS100001)
E. coli Selection:	Kanamycin (25 ug/mL)
ORF Nucleotide Sequence:	>MR224739 representing NM_011718 Red=Cloning site Blue=ORF Green=Tags(s)

TTTTGTAATACGACTCACTATAGGGCGCCGGGAATTCGTCGACTGGATCCGGTACCGAGGAGATCTGCC
GCC**CGATCGCC**

ATGCTGGAGGAGCCCGGTCTCGGCCTCCGCCCTTAGGCCTCGCGGTCTCCTGTTCTTGGCTTTGTTCA
GTCGGGCTCTAAGCAATGAGATTCTGGGCCTTAAACTTCCCGGTGAGCCGCGCTGACGGCAACACCGT
GTGCTTGACCCTGTCCGACTGAGTAAGCGACAGCTGGGGCTGTGCTGCGCAGCCCGACGTGACGGCG
TCGGCGCTCCAGGGGCTGCACATCGCCGTTACGAGTGTGAGCAGCAGCTGCGCGACCAGCGCTGGA
GCTCGGCACTGGAGGGCGCGGGCTGCCGACCACAGCGCCATCCTCAAGCGGGTTCCGTGAGAG
TGCTTTCTCCTTCCATGCTGGCTGCTGGGGTATGATGCTGTTGCCACAGCCTGCAGCCTGGGCAAG
CTGGTGAGCTGCGGCTGCGGATGGAAGGTAGTGGTGAGCAAGACCGGCTTAGAGCCAAGCTGCTGACG
TTCAGGCACTGTCTCGGGCAAGACTTTCCCATCTCCAGCCAGCCCTGTTCCCTGGCTCAGTCCCCAG
CCCCGGCCCCCAGGACACGTGGGAATGGGGTGGCTGTAACCACGACATGGACTTCGGAGAGAAGTTCTCT
CGGGATTTCTGGATTCCAGGGAGGCTCCCCGGGACATCCAGGCGAGAATGCGGATCCACAACAACAGGG
TGGGACGCCAGGTGTTAACGGAAAACCTGAAGCGGAAGTGCAATGCCATGGAACGTCAGGACGCTGCCA
ATCAAGACCTGTTGGAGGCGAGCGCCAGAGTTCGGGCCATCGGGCAGCACTGAGGGAGCGGCTGAGC
AGAGCCATCTTTATCGATACCCACAACCGCAACTCTGGAGCGTTCAGCCCGCCCTACGTCGGGCGGCC
TCTCTGGAGAGCTGGTTTACTTTGAGAAGTCTCCTGACTTCTGCGAGCGAGACCCTACTCTGGGCTCCCC
AGGCACGAGAGGCGGGCTTGAACAAGACCAGCCGCTCTTGGATGGCTGTGGCAGCCTGTGCTGTGGC
CGTGGGCAACAACGTGCTCCGGCAGACGCGAGTGGAGCGCTGCCACTGTGCTTTCCACTGGTGTGTATG
TGCTGTGTGATGAGTGTAAAGTCACAGAGTGGTCAATGTGTGAAA

ACGCGTACGCGGCCGCTCGAGCAGAAACTCATCTCAGAAGAGGATCTGGCAGCAATGATATCCTGGATT
ACAAGGATGACGACGATAAGGTTTAA



[View online »](#)

Protein Sequence: >MR224739 representing NM_011718
Red=Cloning site Green=Tags(s)

```
MLEEPRSPPPLGLAGLLFLALFSRALSNEILGLKLPGEPLTANTVCLTLSGLSKRQLGLCLRSPDVTA
SALQGLHIAVHECQHQLRDQRWNCSALEGGGRLPHHSAILKRGFRSAF SFSMLAAGVMHAVATACSLGK
L VSCGCGWKGSGEQDRLRAKLLQLQALSRGKTFPISQSPSPVPGSVSPGPQDTWEWGGCNHDMDFGEKFS
RDFLDSREAPRDIQARMRIHNNRVGRQVV TENLKRKCKCHGTSGSCQFKTCWRAAPEFRAIGAALRERLS
RAIFIDTHNRNSGAFQPRLRPRLSGELVYFEKSPDFCERDPTLGGSPGTRGRACNKT SRLLDGCGSLCCG
RGHNVLRQTRVERCHCRFWCCYVLCDECKVTEWVNVCK
```

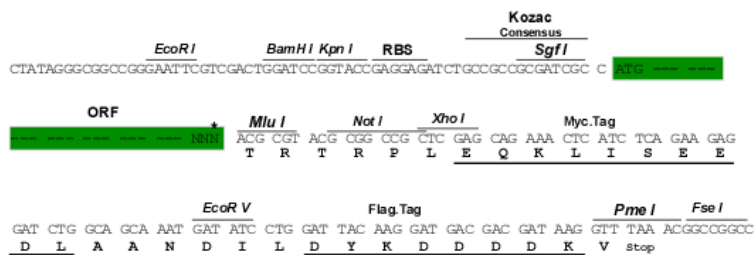
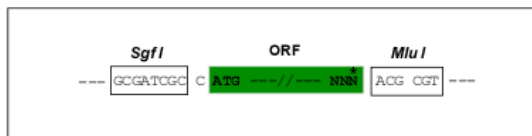
TRTRPLEQKLISEEDLAANDILDYKDDDDKV

Chromatograms: https://cdn.origene.com/chromatograms/mm9007_g05.zip

Restriction Sites: SgfI-MluI

Cloning Scheme:

Cloning sites used for ORF Shuttling:



* The last codon before the Stop codon of the ORF

ACCN: NM_011718

ORF Size: 1167 bp

OTI Disclaimer: The molecular sequence of this clone aligns with the gene accession number as a point of reference only. However, individual transcript sequences of the same gene can differ through naturally occurring variations (e.g. polymorphisms), each with its own valid existence. This clone is substantially in agreement with the reference, but a complete review of all prevailing variants is recommended prior to use. [More info](#)

OTI Annotation: This clone was engineered to express the complete ORF with an expression tag. Expression varies depending on the nature of the gene.

Components: The ORF clone is ion-exchange column purified and shipped in a 2D barcoded Matrix tube containing 10ug of transfection-ready, dried plasmid DNA (reconstitute with 100 ul of water).

Reconstitution Method:

1. Centrifuge at 5,000xg for 5min.
2. Carefully open the tube and add 100ul of sterile water to dissolve the DNA.
3. Close the tube and incubate for 10 minutes at room temperature.
4. Briefly vortex the tube and then do a quick spin (less than 5000xg) to concentrate the liquid at the bottom.
5. Store the suspended plasmid at -20°C. The DNA is stable for at least one year from date of shipping when stored at -20°C.

RefSeq: [NM_011718.2](#), [NP_035848.1](#)

RefSeq Size: 2272 bp

RefSeq ORF: 1170 bp

Locus ID: 22410

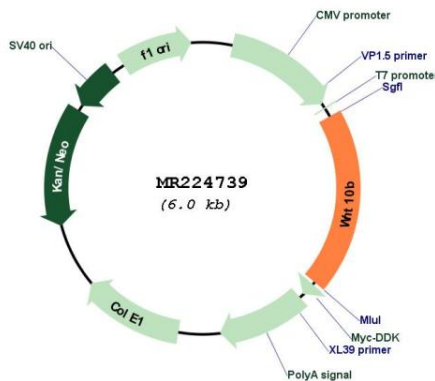
UniProt ID: [P48614](#)

Cytogenetics: 15 54.65 cM

MW: 43.6 kDa

Gene Summary: Member of the Wnt ligand gene family that encodes for secreted proteins, which activate the Wnt signaling cascade. Specifically activates canonical Wnt/beta-catenin signaling and thus triggers beta-catenin/LEF/TCF-mediated transcriptional programs. Involved in signaling networks controlling stemness, pluripotency and cell fate decisions. Acts in the immune system, mammary gland, adipose tissue, bone and skin.[UniProtKB/Swiss-Prot Function]

Product images:



Circular map for MR224739