

Product datasheet for MR224705

Vmn1r29 (NM_053232) Mouse Tagged ORF Clone

Product data:

Product Type:	Expression Plasmids
Product Name:	Vmn1r29 (NM_053232) Mouse Tagged ORF Clone
Tag:	Myc-DDK
Symbol:	Vmn1r29
Synonyms:	V1rc2
Mammalian Cell Selection:	Neomycin
Vector:	pCMV6-Entry (PS100001)
E. coli Selection:	Kanamycin (25 ug/mL)
ORF Nucleotide Sequence:	>MR224705 representing NM_053232 Red=Cloning site Blue=ORF Green=Tags(s)

TTTTGTAATACGACTCACTATAGGGCGCCGGGAATTCGTCGACTGGATCCGGTACCGAGGAGATCTGCC
GCC**CGGATCGCC**

ATGTCCTTATTCAAGAATGTTCTTTATTTCCAAGCTGGACTTGGAGTTTTAGCCAATATGTTTCTACTTT
TTTTCTATATTTTCATAATCCTAGGTCACAGACCTAAACCCACAGACCTGATCTCCTGTCAACTGACCTT
CGTTCACATAATGATGTTCCCTGGAGGGGATATTTGGCTTACAGACATATTTGAGACTGAACATT
GAGAATGACTTCAAATGTAAGACAATATTTACATAAGCAGGGTATGAGAGGCCTCTATCTGCAACA
CCTGCCTCCTGAGTGTGGTCCAGGCTGTACAATCAGTCCAGTACCTCACTGTTGGCAAATTCAAACC
AAGACTGAAAATGTAAGTACTGATCTATGCTTTCTTCTGTATTTGGTCTTTCAATTTGCTCTACAGTAGTAAC
CAGATCTTATATGTTGGTGGTTTTACCAACTTAAGTGAACCAACCAGATGAAGGTCCTAAATCCTGTA
CACTCTTACCAAAGAACTACATCATCAAAGGATTGATTTAACAGTGTCAATCTCCAGAGATGTTTTTCT
TGTAGGAGTCAATGCTGACTACAAGCACATACATGTTGAATATTTGTTTCAGGCATCAGAGGCAATGCAAG
CATCTTCATAGCATCAGCTATCTGAGAGCATCCCCTGAGAAAAGGGCCACCCAGACCATCTTACTGCTTG
TGGTCTTCTTTGGTGCATGTACTGGGTGGACTTATCATCTCATCCACCTCAGTCATGTTATGGATGTA
TGACCCAGTAGTCCTGACTGTTGAGAAGTTTGTGATGTGTGCCTATCCCACAATTACTCCTTTGGTACAA
ATCACTTCTGATAATAGAATAAATTAATGTTGGAAAACATGCAGTCAAAGCACCCGAGCAATTTTTTTT

ACGCGTACGCGGCCGCTCGAGCAGAAACTCATCTCAGAAGAGGATCTGGCAGCAAATGATATCCTGGATT
ACAAGGATGACGACGATAAGGTTTAA



[View online »](#)

Protein Sequence: >MR224705 representing NM_053232
 Red=Cloning site Green=Tags(s)

```
MSLFKNVLYFQAGLGVLANMFLFFYIFIILGHRPKPTDLISCQLTFVHIMMFLAGGDIWLDIFETLNI
ENDFKCKTIFYISRVMRGLSICNTCLLSVVQAVTISPSTSLAKFKPRLKMYLIYAFFCIWSFNLLYSSN
QILYVGGFTNLSETNQMKVTKSCTLLPKNYIIKGLILTVSISRDFLVGVMLTTSTYMLNILFRHQKQCK
HLHSISYL RASPEKRATQTILLVVFFVVMYWDFIISSTSVMLWMYDPVVLTVQK FVMCA YPTITPLVQ
ITSDNRIIIMLENMQSKHRQNF
```

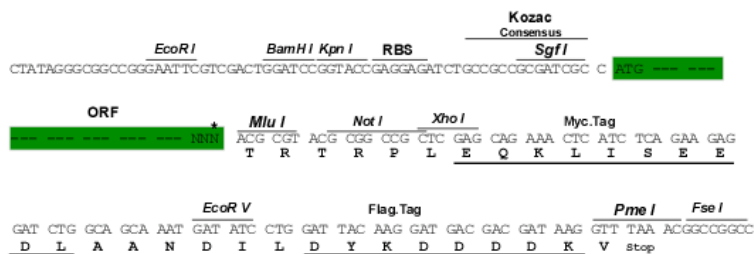
TRTRPLEQKLISEEDLAANDILDYKDDDDKV

Chromatograms: https://cdn.origene.com/chromatograms/mm9063_a04.zip

Restriction Sites: SgfI-MluI

Cloning Scheme:

Cloning sites used for ORF Shuttling:



* The last codon before the Stop codon of the ORF

ACCN: NM_053232

ORF Size: 909 bp

OTI Disclaimer: The molecular sequence of this clone aligns with the gene accession number as a point of reference only. However, individual transcript sequences of the same gene can differ through naturally occurring variations (e.g. polymorphisms), each with its own valid existence. This clone is substantially in agreement with the reference, but a complete review of all prevailing variants is recommended prior to use. [More info](#)

OTI Annotation: This clone was engineered to express the complete ORF with an expression tag. Expression varies depending on the nature of the gene.

Components: The ORF clone is ion-exchange column purified and shipped in a 2D barcoded Matrix tube containing 10ug of transfection-ready, dried plasmid DNA (reconstitute with 100 ul of water).

Reconstitution Method:

1. Centrifuge at 5,000xg for 5min.
2. Carefully open the tube and add 100ul of sterile water to dissolve the DNA.
3. Close the tube and incubate for 10 minutes at room temperature.
4. Briefly vortex the tube and then do a quick spin (less than 5000xg) to concentrate the liquid at the bottom.
5. Store the suspended plasmid at -20°C. The DNA is stable for at least one year from date of shipping when stored at -20°C.

RefSeq: [NM_053232.1](#), [NP_444462.1](#)

RefSeq Size: 912 bp

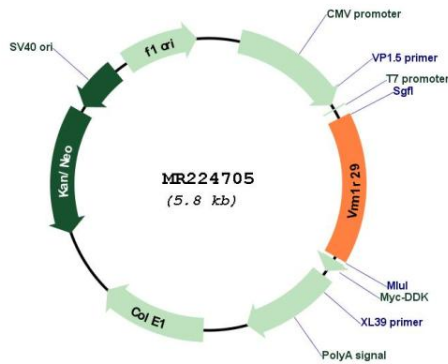
RefSeq ORF: 912 bp

Locus ID: 113859

Cytogenetics: 6 B3

MW: 35.1 kDa

Product images:



Circular map for MR224705