

## Product datasheet for **MR224701**

### Clcn6 (NM\_011929) Mouse Tagged ORF Clone

#### Product data:

Product Type:	Expression Plasmids
Product Name:	Clcn6 (NM_011929) Mouse Tagged ORF Clone
Tag:	Myc-DDK
Symbol:	Clcn6
Synonyms:	A1850629; Clc6
Mammalian Cell Selection:	Neomycin
Vector:	pCMV6-Entry (PS100001)
E. coli Selection:	Kanamycin (25 ug/mL)



[View online »](#)

ORF Nucleotide  
Sequence:

>MR224701 representing NM\_011929  
Red=Cloning site Blue=ORF Green=Tags(s)

TTTTGTAATACGACTCACTATAGGGCGGCCGGGAATTCGTCGACTGGATCCGGTACCGAGGAGATCTGCC  
GCC**CGCATCGCC**

ATGGCGGGGTGCAGGGGTCCTGTGCTGCTGCTGCCGGTGGTGTGCTGCTGCCGTGAACGGGAGAGCC  
GCACCCCGAGGAGCTGACCATCCTTGGGAGACACAGGAAGAAGAGGATGAGATTCTTCCAAGGAAAGA  
CTATGAGAGTCTGGACTATGACCCTGCATCAATGACCCTTACCTGGAGGTGTTGGAGACCATGGATAAT  
AAGAAAGGGCGAAGATACGAGGCGGTGAAGTGGATGGTGGTGTTCGCATTGGCGTCTGTACGGGCTGG  
TGGGTCTCTTTGTGGACTTTCCGTGCGACTCTTACCCAACTGAAGTTCGGAGTGGTTCAAACGTCGGT  
GGAGGAATGCAGTCAGAAGGGCTGCCTGCCCTGTCCCTCCTGGAGCTCCTGGGCTTTAACTTGACCTTT  
GTCTTCTGGCAAGCCTTCTGTCTTGATAGAGCCAGTGCAGCAGGTTCTGGAATCCCGAGATCAAGT  
GCTACCTGAATGGTGTGAAAGTCCAGGAATTGTCGGCTCCGGACCCTGCTCTGCAAAGCTTTGGGGT  
GCTGTTCAAGTGTCTGGAGGGCTCTTTGTGGGAAAGAAGGCCCATGATCCACAGTGGTGTGTGGTA  
GGAGCTGGCCTCCCTCAGTTCAGAGCATCTCCTTACGGAAGATCCAGTTAACTTCCCCTACTTCCGCA  
GCGACAGAGACAAGCGTGACTTTGTGTCAGCGGGGCGAGCTGCTGGCGTTGCTGCAGCTTTTGGGGCCCC  
TATAGGGGGCACCTTGTTCAGTCTGGAGGAGGGTTCATCCTTCTGGAACCGGGGCTCACGTGAAAAGTG  
CTCTTCTGTTCCATGTCCGCCACCTTACCCTCAACTTCTCCGCTCTGGGATTCAGTTTGGAAAGTTGGG  
GTTCTTCCAGCTGCCTGGATTGCTGAAGTTGGTGAATTAAGTGTCTGACTCTGATAAAAAATGTCA  
TCTCTGGACAGCTATGGATTTGGGTTTCTTCGTCGTGATGGGGTTCATTGGGGGCTCCTGGGAGCCACA  
TTCAACTGTCTGAACAAGAGGCTTGCAAAGTACCGTATGCGCAACGTGCACCCGAAACCTAAGCTGTCA  
GAGTCTTAGAGAGCCTCTTGGTGTCCCTGGTGACCCTGTGGTGGTGTGTTGGTCCCTCCCTGTTAGG  
AGAATGCCGACAGATGTCTTCCAGGAGTCAAACCGGTAATGGCTCATTCCAGCTCCAGGTCACATCAGAA  
GATGTGAATCAACTATCAAGGCTTTTTTCTGTCCCAATGACACTTACAATGACATGGCCCACTCTTCT  
TCAACTCCAGGAGTCTGCCATCCTGCAGCTCTTCCATCAGGATGGGACTTTCAGCCCCGTACCCTGGC  
CTTATTCTTATCCTCTATTTCTGCTCGCATGCTGGACTTTTGGCACATCTGTCCCCAGTGGCCTCTTC  
GTGCCCTCCCTGCTGTGTGGAGCAGCTTTTGGACGTTTAGTTGCCAATGCTCTGAAAAGTACATTGGAC  
TGGGCCACCTCTATTCTGGGACCTTGGCCTGATTGGTGCAGCAGCTTCTTGGTGGGGTGTGAAGGAT  
GACCATCAGCCTCACAGTCATCCTGATCGAGTCTACAAATGAGATCACCTATGGGCTTCCGATCATGGTC  
ACTCTGATGGTGGCCAAGTGGACTGGAGACTTGTCAACAAGGGCATTATGACGTCATATTGGGCTGA  
GAGGTGTGCCTCTTCTGGAGTGGGAGACAGACGTGGAATGGACAAGCTGAGAGCCAGTGACATCATGGA  
GCCAACCTGACGTACGTCTACCCGCACACTCGCATCCAGTCTCTGGTGAGCATCCTGCGCACTACGGTC  
CACCATGCCTTCCAGTGGTACGGAGAACCAGGGAACGAGAAGGAGTTCATGAAGGGCAACCAGCTCA  
TAAGCAACAACATCAAGTTCAAGAAATCCAGTATCCTGACCCGTGCTGGTGGAGCAGCGCAAGCGGGCCA  
GTCCATGAAGTCGTACCCTTCCAGCGAGCTGCGCAACGTGTGTGATGAGCATGTGGCTTCTGAGGAGCCG  
GCAGAGAAGGAGGACCTGCTACAGCAGATGCTGGAGAGGAGATACACTCCCTACCCCAACCTATACCCTG  
ACCAGTCCCCGAGTGAAGACTGGACCATGGAGGAGCGTTTCCGTCCGCTGACCTTTCACGGCCTTGTCT  
CGCTCTCAGCTTGTACCCTGCTTGTCCGAGGAGTGTGCTATTGGAAGTCAAGTCCAGTCCAGTCCAGCCAA  
CCAGCTTTTCTTACGCTGAGATGGCTGAGGACTACCCGCGATACCCGGACATACATGACCTGGACCTCA  
CACTGCTGAATCCCGAATGATTGTGGATGTACCCCATATATGAATCCTTACCATTACCCTGCTCCCC  
CAACACCCATGTTTCTCAAGTGTCAACCTGTTTCAAGACCATGGGCTGCGCCACTTGCCTGTGGTGAAT  
GCAGTAGGAGAGATCGTGGGATCATTACAGGCACAACCTGACAATGAATTCCTGCAGGCCCGGCTGC  
GGCAGCATTACCAGACCCTC

**ACGCGT**ACGCGGCCGCTCGAGCAGAACTCATCTCAGAAGAGGATCTGGCAGCAATGATATCCTGGATT  
ACAAGGATGACGACGATAAGGTTTAA

Protein Sequence: >MR224701 representing NM\_011929  
 Red=Cloning site Green=Tags(s)

MAGCRGSVCCCRWCCCGERESRTPEELTILGETQEEDEILPRKDYESLDYDRCLNDPYLEVTMDN  
 KKGRRYEAVKWMVFAIGVCTGLVGLFVDFSVRLFTQLKFGVVQTSVEECSQKGCLALSLELLGFNLTF  
 VFLASLLVLIIEPVAAGSGIPEIKCYLNGVKVPGIVRLRLLCKVFGVLFVSVGGFLVKGEGPMIHS  
 GAVV GAGLPQFQSIISLRKIQFNFPYFRSDRDKRDFVSAGAAAGVAAAFGAPIGGTLFSL  
 EEGSSFWNQGLTWKV LFCMSATFTLNFFRSGIQFGSWGSQLPGLLNFGGEFKCSDSKKCHLWT  
 AMDLGGFFVVMGVIGGLLGAT FNCLNKRLAKYMRNVHPKPLVRVLESLLVSLVTTVVV  
 FVASMVLGECRQMSSTSQTGNGSFQLQVTSE DVNSTIAFFCPNDTYNDMATLFFNSQESAIL  
 QLFHQDGTFSVPTLALFFILYFLLACWTFGTSVPSGLF VPSLLCGAAFGRLVANVLKSYIGL  
 GHLYSGTFALIGAAFLGGVVRMTISLTVILIESTNEITYGLPIMV TLMVAKWTGDLFNKGIYD  
 VHIGLRGVPLLEWETDVEMDKLRASDIMEPNLTYYVPHTRIQSLVSI  
 LRTTV HHAFFVVTENRGNEKFMKGNQLISNNIKFKKSSILTRAGEQRKRQSMKSYPSSEL  
 RNVCEHVAESEP AEKEDLLQOMLERRYTPPNLYPDQSPSEDWTMEERFRPLTFHGLVLR  
 SQLVTLVLRGVCYSESQSASQ PRLSYAEMAEDYPRYPDIDLDLTLNPRMIVDVT  
 PYMNPSPFTVSPNTHVSQVFNLFRTMGLRHLPVVN AVGEIVGIITRHNLTNEFLQARLRQHYQTL

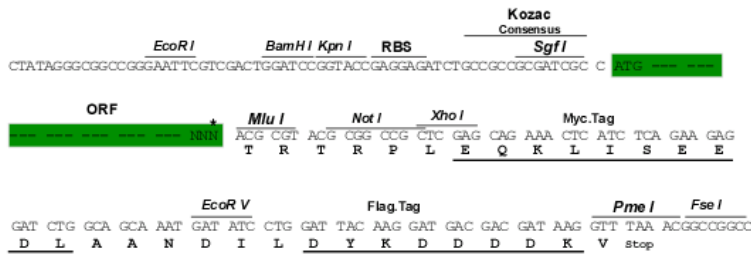
TRTRPLEQKLISEEDLAANDILDYKDDDDKV

Chromatograms: [https://cdn.origene.com/chromatograms/mm9003\\_d09.zip](https://cdn.origene.com/chromatograms/mm9003_d09.zip)

Restriction Sites: SgfI-MluI

Cloning Scheme:

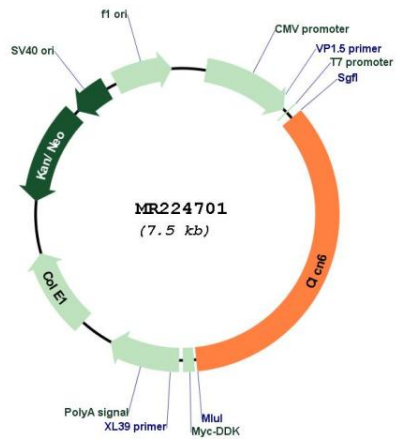
Cloning sites used for ORF Shuttling:



\* The last codon before the Stop codon of the ORF

<b>ACCN:</b>	NM_011929
<b>ORF Size:</b>	2610 bp
<b>OTI Disclaimer:</b>	The molecular sequence of this clone aligns with the gene accession number as a point of reference only. However, individual transcript sequences of the same gene can differ through naturally occurring variations (e.g. polymorphisms), each with its own valid existence. This clone is substantially in agreement with the reference, but a complete review of all prevailing variants is recommended prior to use. <a href="#">More info</a>
<b>OTI Annotation:</b>	This clone was engineered to express the complete ORF with an expression tag. Expression varies depending on the nature of the gene.
<b>Components:</b>	The ORF clone is ion-exchange column purified and shipped in a 2D barcoded Matrix tube containing 10ug of transfection-ready, dried plasmid DNA (reconstitute with 100 ul of water).
<b>Reconstitution Method:</b>	<ol style="list-style-type: none"><li>1. Centrifuge at 5,000xg for 5min.</li><li>2. Carefully open the tube and add 100ul of sterile water to dissolve the DNA.</li><li>3. Close the tube and incubate for 10 minutes at room temperature.</li><li>4. Briefly vortex the tube and then do a quick spin (less than 5000xg) to concentrate the liquid at the bottom.</li><li>5. Store the suspended plasmid at -20°C. The DNA is stable for at least one year from date of shipping when stored at -20°C.</li></ol>
<b>RefSeq:</b>	<a href="#">NM_011929.3</a> , <a href="#">NP_036059.1</a>
<b>RefSeq Size:</b>	2910 bp
<b>RefSeq ORF:</b>	2613 bp
<b>Locus ID:</b>	26372
<b>UniProt ID:</b>	<a href="#">O35454</a>
<b>Cytogenetics:</b>	4 78.67 cM
<b>MW:</b>	97.4 kDa
<b>Gene Summary:</b>	This gene encodes a member of the ClC chloride channel and transporter family of proteins. The encoded protein may function as a vesicular Cl <sup>-</sup> /H <sup>+</sup> antiporter. Homozygous knockout mice exhibit decreased pain sensitivity, behavioral abnormalities and features of lysosomal storage disease. [provided by RefSeq, Aug 2015]

Product images:



Circular map for MR224701