

Product datasheet for MR224657

Optc (NM_001160421) Mouse Tagged ORF Clone

Product data:

Product Type:	Expression Plasmids
Product Name:	Optc (NM_001160421) Mouse Tagged ORF Clone
Tag:	Myc-DDK
Symbol:	Optc
Synonyms:	MGC117622
Mammalian Cell Selection:	Neomycin
Vector:	pCMV6-Entry (PS100001)
E. coli Selection:	Kanamycin (25 ug/mL)
ORF Nucleotide Sequence:	>MR224657 ORF sequence Red=Cloning site Blue=ORF Green=Tags(s)

TTTTGTAAACGACTCACTATAGGGCGGCCGGAATTCGTCGACTGGATCCGGTACCGAGGAGATCTGCC
GCC**CGATCGCC**

ATGAAGTTCCTGGCTTTCCTGAGTCTGTTGAGCTTGGTCTGCAGAAGGCAGAGACAGCTTCTCTCCTAG
GGGAGAGAGAAAGAGAAGAGCAGAGCCCTGAGGAAGGTGACACTTACGCGTCCCTGTATGTGGGAAACCA
TACCCTGAGCATAGAGGACTACAACGAGGTCATTGATCTCAGCAACTATGAAGAAGTGGCAGACTATGGA
GACCAGATCCCTGAGGCTAAAAAAGCAATCTGACTCTCCAACAAGAAGTCCCACTAGCACTGTGG
CTCAGAAGACATTGTACCAAACCTCACGATGGCCGTACCTACCACCCTGGCCTACTAACTCCCAGAG
CAGTCATGCAAACTGAGAAGGATCGACCTCTCTGGCAACTCCATCTCCTCCATCCACAACGATGCCCTC
CGCCTGTCTGCCCTGCAGGATCTGATCCTCCAGAGAACCAGCTGGCAGCCCTGCCTGTGCTGCCCA
GTGGCATTGAGTTCCTGGACGTCGCTGAATCGGCTGCAGAGCTCTGGGATACAGCCTGAGGCATTTCGT
GGCGCTGAAGAAGCTGCAGTTTCTACCTGGCCAACAACATGCTGGATTCCATCCCTGGGCCTTTGCC
CTCAGCCTGCGCTCTCTGCACCTGCAGAATAACATGATCGAGACCATGGAAGCGACACCTCCTGTGACA
CCGGGAAACACAGACATGAGCGCCGGCAGCTGGAAGACATCCGCTGGACGGAAACCCATCAACCTGAG
CCTTTTCCAGAGGCCTATTTTTGCCTGCCACGGCTCCCTGTGGCCACTTACC

AG**CGGACCG**ACGCGTACGCGCCGCTCGAGCAGAACTCATCTCAGAAGAGGATCTGGCAGCAAATGATATCC
TGGATTACAAGGATGACGACGATAAGGTTTAA



[View online »](#)

Protein Sequence: >MR224657 protein sequence
 Red=Cloning site Green=Tags(s)

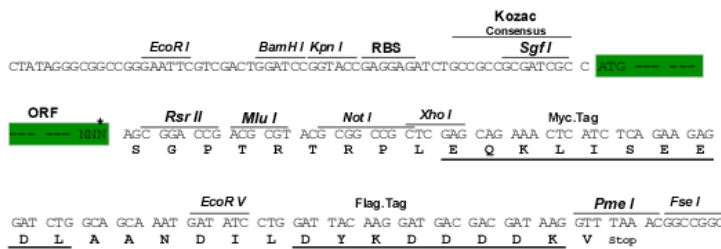
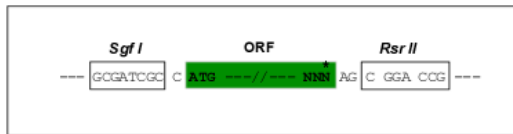
MKFLAFLSLLSLVLQKAETASLLGEREREEQSPEEGDTYASLYVGNHTLSIEDYNEVIDLSNYEELADYG
 DQIPEAKISNLTLPTRTSPTSTVAQKTLSPNL TMAVPTTTGLLSQSSHAKLRRIDLSGNSISSIHNDAL
 RLLPALQDLILPENQLAALPVLPSGIEFLDVRLNRLQSSGIQPEAFVALKKLQFLYLANMLDSIPGLP
 LSLRSLHLQNNMIETMESDTS CDTGGEHRHERRQLEDIRLDGNP INLSLFPEAYFCLPRLPVGHFT

SGPTRTRPLEQKLI SEEDLAANDILDYKDDDDKV

Restriction Sites: SgfI-RsrII

Cloning Scheme:

Cloning sites used for ORF Shuttling:



* The last codon before the Stop codon of the ORF

ACCN: NM_001160421

ORF Size: 828 bp

OTI Disclaimer: The molecular sequence of this clone aligns with the gene accession number as a point of reference only. However, individual transcript sequences of the same gene can differ through naturally occurring variations (e.g. polymorphisms), each with its own valid existence. This clone is substantially in agreement with the reference, but a complete review of all prevailing variants is recommended prior to use. [More info](#)

OTI Annotation: This clone was engineered to express the complete ORF with an expression tag. Expression varies depending on the nature of the gene.

Components: The ORF clone is ion-exchange column purified and shipped in a 2D barcoded Matrix tube containing 10ug of transfection-ready, dried plasmid DNA (reconstitute with 100 ul of water).

Reconstitution Method:

1. Centrifuge at 5,000xg for 5min.
2. Carefully open the tube and add 100ul of sterile water to dissolve the DNA.
3. Close the tube and incubate for 10 minutes at room temperature.
4. Briefly vortex the tube and then do a quick spin (less than 5000xg) to concentrate the liquid at the bottom.
5. Store the suspended plasmid at -20°C. The DNA is stable for at least one year from date of shipping when stored at -20°C.

RefSeq: [NM_001160421.1](#), [NM_001160421.2](#), [NP_001153893.1](#)

RefSeq Size: 1747 bp

RefSeq ORF: 987 bp

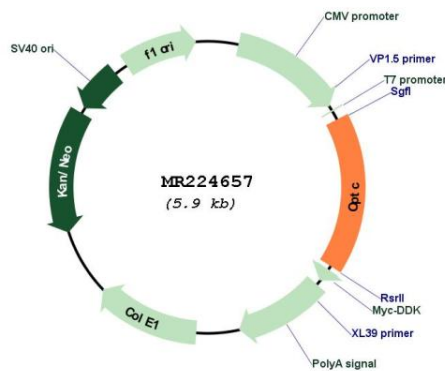
Locus ID: 269120

Cytogenetics: 1 58.02 cM

MW: 30.5 kDa

Gene Summary: Binds collagen fibrils.[UniProtKB/Swiss-Prot Function]

Product images:



Circular map for MR224657