

## Product datasheet for MR224633

### Trpm3 (NM\_001035243) Mouse Tagged ORF Clone

#### Product data:

Product Type:	Expression Plasmids
Product Name:	Trpm3 (NM_001035243) Mouse Tagged ORF Clone
Tag:	Myc-DDK
Symbol:	Trpm3
Synonyms:	6330504P12Rik; 9330180E14; AU018608; B930001P07Rik; LTRPC3; MLSN2
Vector:	pCMV6-Entry (PS100001)
E. coli Selection:	Kanamycin (25 ug/mL)
Cell Selection:	Neomycin
ORF Nucleotide Sequence:	>MR224633 representing NM_001035243 Red=Cloning site Blue=ORF Green=Tags(s)

TTTTGTAATACGACTCACTATAGGGCGGCCGGAATTCGTCGACTGGATCCGGTACCGAGGAGATCTGCC  
GCC**CGATCGCC**

ATGGGCAAGAAGTGGAGGGATGCGGGCAGCTGGAGAGAGTTGCTCTGACCGCAGGACAGCGCAGAGA  
GCCGCAGGCGCAGCCGCAGCGCCAGCCGGGCAGGTTTGGCCGAGTCGTGAAAAGGTTAAGTTCCAAGCA  
GGGGTCCACCAAGCGCTCGGGACTGCCGGCACAGCAGACACCGGCTCAGAAATCCTGGATTGAAAGAGCA  
TTTTATAAAAGAGAATGTGTTACATCATACCGAGCACCAAGACCCCATAGGTGTTGCTGGAGCC  
TCATAGGCCAGCATGTTGGACTCACTCCAGTATCTCTGTGCTTCAAGTATGAGAAAAATGAGAGTCGCT  
CTCCCGAAATGACATCCAGTCTGAGAAGTGGTCTATCAGCAAACACACTCAGCTCAGCCCAACAGACGCT  
TTTGGGACATTGAGTTCCAAGGAGGTGGCCATCCAACAAGCTATGTATGTCCGAGTATCTTTTGATA  
CGAAACCTGATCTCTTGTACACCTGATGACCAAGGAATGGCAACTGGAGCTTCCCAAATCTCATCTC  
CGTGCACGGAGGGCTGCAGAACCTTGAACCTCAGCCAACTCAAGCAAGTCTTCGGGAAGGGGCTCATC  
AAAGCAGCCATGACAACCTGGAGCCTGGATCTTCACTGGAGGGTCAACACAGGTGTCATTGCTCATGTTG  
GAGATGCCTTGAAGACCATGCATCTAAGTCTCGAGGGAAGATATGTACCATAGGTATCGCCCCCTGGGG  
AATTGTGAAAACAGGAAGACCTGATTGGAAGAGATGTAGTCCGACCATACCAGACCATGTCCAATCCT  
ATGAGCAAGCTCACCGTTCTCAATAGCATGCACTCCCACTTCATCCTGGCTGACAATGGGACCACGGGGA  
AATACGGAGCAGAGGTGAAACTCCGCAGACAACGGAAAAGCACATTTCACTCCAGAAGATAAACACAAG  
AATCGGTCAAGGGTTCCAGTGGTGGCTCTCATCGTGAAGGAGGACCAATGTGATCTCAATTGTTTTG  
GAATACCTTCGAGACACCCCTCCTGTACCAGTCGTGGTCTGTGATGGGAGTGGACGGCATCCGACATCC  
TGGCATTGGGCATAAATATTCAGAAGAAGCGGACTTATCAATGAATCTTTGAGGGACCAGCTGTTGGT  
GACAATACAGAAGACCTTACGTACACTCGAACCAAGCTCAGCACCTGTTTCATCATCCTCATGGAATGC  
ATGAAGAAGAAGAACTGATCACAGTGTTCGAATGGGGTCAGAAGGCCACCAGGACATTGATTTAGCTA  
TCCTGACAGCATTACTCAAAGGTGCAATGCATCCGCCCCAGACCAACTGAGCTTAGCTTTAGCCTGGAA  
CAGAGTTGACATCGCTCGCAGCCAGATCTTTATTTACGGGCAGCAGTGGCCGGTAGGGTCCCTGGAGCAA  
GCCATGCTGGATGCCCTAGTCTGGACAGAGTGGATTTGTGAAATTACTCATAGAAAATGGAGTAAGCA



[View online »](#)

TGCACCGTTTTCTCACCATCTCCAGACTAGAGGAAGTGTACAATACGAGACATGGGCCCTCAAATACATT  
 GTACCACTTGGTCAGGGATGTCAAAAAGGGAAACCTGCCCCGGACTACAGAATCAGCCTGATAGACATT  
 GGCCTGGTGATCGAGTACCTGATGGGCGGGGCTTACCGCTGCAACTACACGCGCAAGCGCTTTGGACCC  
 TCTACCACAATCTCTTTGGCCCCAAAAGGGATGATATTCCTTGAGGAGAGGACGGAAGACAACCTAAGAA  
 GCGTGAGGAAGAGGTGGACATCGACTTGGATGATCCTGAGATCAACCCTTTCCATTTCCCTTCCATGAG  
 CTGATGGTGTGGCCGTCTCATGAAGAGACAAAAGATGGCCCTGTTCTTCTGGCAACACGGAGAGGAGG  
 CCATGGCCAAAGCCCTGGTGGCTGCAAGCTCTGCAAGGCCATGGCTCAGGAGCTTCTGAGAATGACAT  
 GGTGATGACATTTCCAGGAGCTGAACCACAACCTCCAGGGACTTTGGCCAGCTGGCTGTGGAGCTCCTG  
 GACCAGTCTACAAAACAGGATGAGCAGCTGGCCATGAAGCTGCTGACGTATGAGCTGAAGAAGTGGAGTA  
 ATGCCACATGCCTGCAGCTGGCTGTGGCTGCCAAGCACCGTGACTTCATTGCACACACGTGCAGCCAGAT  
 GTTACTTACTGACATGTGGATGGGACGGCTCCGGATGAGAAAGAAGTCAAGCCTCAAGGTAATTCTGGGA  
 ATTCTACTTCTCTCAATTCTCAGCTTGGAGTTCAAGAACAAGATGACATGCCCTATATGACTCAGG  
 CCCAGGAGATTCTCCTCAAGAGAAGGAGCCGGAGGAGCCAGAGAAGCCCAAAAGGAAAAAGATGAAGA  
 GGACATGGAGCTAACAGCAATGTTGGGCGAAGCAATGGGAATCATCCAGAAAGAAAGATGAAGAAGAA  
 GTTCAAAGCAGGCACCGCTAATCCCCGTGGGCCGAAAAATCTATGAGTTCTACAACGCACCCATCGTGA  
 AGTCTGTTCTACACTCTGGCGTATATTTGGATACCTGATGCTCTTCAACTACATCGTGTAGTGAAGAT  
 GGAGCGCTGGCCCTTCACTCAGGAATGGATTGTACATCTCTACATTTTCACTCTGGGAATAGAGAAGATG  
 AGAGAGATCCTGATGTCCGAGCCGGCAAGCTGCTGCAGAAGGTGAAGGTGTGGCTTCAAGGACTGGA  
 ACGTCACAGACCTCATCGCCATCCTTCTTCTCGGTGGGAATGATCCTTCGTCTTCAAGATCAGCCCTT  
 CAGGAGTGACGGGAGGGTCACTACTGTGTGAACATCATTTATTGGTATATCCGTTTGTGGACATCTTC  
 GCGTGAACAAGTATCTGGGCCATATGTGATGATGATTGGGAAAATGATGATAGACATGATGACTTTG  
 TCATCATTATGCTGGTGGTGTGATGAGCTTTGGGTGCGCAGGCAAGCCATTCTTTCCCAATGAGGA  
 GCCATTGGAACTGGCCAAGAAATCTTCTACATGCCTTATTGGATGATTTATGGGAAAGTGTTTGCT  
 GACCAGATAGACCCTCCCTGTGGACAGAATGAGACCCGAGAGGATGGCAAGACAATCCAGCTGCCCCAT  
 GCAAGACAGGAGCATGGATTGTCCCGGCCATCATGGCCTGCTACCTTGGTGGCGAACATCCTTCTGGT  
 CAACCTCCTTATTGCCGTCTTCAACAATACATTTTTTGGAGTCAAGTCGATATCCAACCAAGTATGGAAA  
 TTTCCAGAGGTACCAGCTCATGACTTTCCACGAGAGGCGGTTCTGCCCCACCGCTCATCATTTCA  
 GTCACATGACCATGATCTTCCAGCATGTGTGCTGCCGGTGGAGGAAGCATGAGAGTGACCAGGACGAAA  
 GGACTACGGCCTGAAACTCTTCAACTGACGATGAGCTCAAGAAAGTACACGATTTTGAAGAGCAGTGC  
 ATAGAGGAATATTTCCGAGAGAAGGATGATCGCTTCAATTCGTCCAACGATGAGAGGATACGTGTTACAT  
 CAGAAAGGGTGGAGAACATGTCCATGAGGCTGGAGGAAGTTAATGAGAGAGAACATTCATGAAGGCTTC  
 ACTCCAGACCGTGACATCCGGCTAGCAGACTAGAGGACCTCATCGGGCGCATGGCCACCGCCCTGGAG  
 CGCCTGACTGGTCTGGAGCGGGCAGAGTCTAACAAAATCCGCTCAAGGACCTCCTCAGACTGCACAGATG  
 CAGCCTACATCGTCCGACAGAGCAGCTTCAACAGCCAGGAAGGGAACACCTTCAAACCTCAAGAGAGTAT  
 AGACCCTGCAGGTGAGGAGACCATATCCCAACTTCTCCAACCTTAATGCCCCGTATGCGAAGCCATTCT  
 TTCTATTCAAGTCAATGTGAAAGACAAAGGTGGGATAGAAAAGTTGGAAAGCATTTTCAAAGAAAGTCCC  
 TGAGCTTACACCGAGCTACTAGCTCCACTCAGTAGCCAAAGAACCCAAAGCTCCTGCAGCCCTGCAAA  
 CACCTTGGCCATTGTTCTGACTCCAGAAGACCATCATTTGCATAGACATCTATGTCTCTGCCATGGAC  
 GAGCTCCACTGTGATATAGAGCCTCTGGATAATTCCATGAACATCCTTGGGCTGGTGAGCCAAGCTTTT  
 CAGCTCTAGCACCTTCCACAACCCGTCAAGTAGTGCCTATGCAACGCTCGCACCTACAGACCGACCTCC  
 CAGTAGGAGCATTGATTTTGAAGACCTCACCTCCATGGACACTAGATCTTTTTTCTCAGACTATACACAC  
 CTCCCAGAATGCCAAAACCCCTGGGACACAGACCTCCAACGTACCATACCATCGAGCGTTCCAAGAGTA  
 GCCGCTACCTAGCCACCACGCCCTTTCTTCTGGAAGAGGCTCCATTGTAAAATCCCATAGCTTTATGTT  
 TTCTCCTTCAAGGAGCTACTACGCCAATTTGGGGTGGCCGTGAAAACGGCAGAATACACAAGTATTACA  
 GACTGTATCGACACAAGATGTGCAATGCCCCCAAGCAATAGCTGACCGAGCCACCTTCCCTGGAGGTC  
 TCGGAGACAAAGTGAAGATTTATCTTGTGCCACCCTGAGCGAGAAGCAGAGCTGAGCCATCCTAGCTC  
 TGACAGTGAGGAAAATGAGGCCAGAGGCCAGAGAGCTGCCAATCCGATATCCTCTCAGGAGGCTGAAAAT  
 GCAGACAGAACCCTATCCAACAACATCACAGTTCCCAAGATAGAGCGCGCAACAGCTACTCAGCAGAGG  
 AGCCAAACGTGCCATATGCACATACCAGAAAGAGCTTCTCCATCAGTGACAAGCTTGATAGACAGAGGAA  
 CACGGCGAGCCTCCGAAATCCCTTCCAGAGAAGTAAGTCTCCAAGCCGAGGGCCGAGGGGACAGCCTA  
 TCCATGAGGAGACTGTCTAGAACATCGGCCTTTCATAGCTTTGAAAGCAAGCACAAAC

ACGCGTACGCGGCCGCTCGAGCAGAACTCATCTCAGAAGAGGATCTGGCAGCAAATGATATCCTGGATT  
ACAAGGATGACGACGATAAGGTTTAA

Protein Sequence:

>MR224633 representing NM\_001035243  
Red=Cloning site Green=Tags(s)

MGKKWRDAGELERGCSDREDSAESRRRSRSASRGRFAESWKRLSSKQGSTKRSGLPAQQTPAQKSWIERA  
FYKRECWHIPSTKDPHRCRCCGRLIGQHVGLTPSISVLQNEKESRLSRNDIQSEKWSISKHTQLSPTDA  
FGTIEFQGGGHSNKAMYVRSFDTKPDLLLHLMTKEWQLELPKLLISVHGGQLQNFELQPKLKQVFGKGLI  
KAAMTTGAWIFTGGVNTGVIRHVGDAKLDHASKSRGKICTIGIAPWGIENQEDLIGRDVVRPYQTSNP  
MSKLTVLNSMHSFILDNGTTGKYGAEVKLRRLQLEKHISLQKINTRIGQGVVVALIVEGGPNVISIVL  
EYLRDTPPVVVCDSGRASDILAFGHKYSEEGGLINESLRDQLLVTIQKFTTYTRTQAQLFIILMEC  
MKKKELITVFRMGSEGHQDIDLAILTALLKGANASAPDQLSLALAWNVRDIARSQIFIIYQQWPVGSLEQ  
AMLDALVLDVDFVKLLIENGVMHRFLTISRLEELYNTRHGPNLTYHLVRDVKKGNLPPDYRISLIDI  
GLVIEYLMGGAYRCNYTRKFRFLTYHNLFGPKRDDIPLRRGRKTKKREEEVDIDLDDPEINHFFPFHE  
LMVWAVLMKRQKMAFFWQHGEEMAKALVACKLCKAMAHEASENDMVDIISQELNHNSRDFGQLAVELL  
DQSYKQDEQLAMKLLTYELKNWSNATCLQLAVAAKHRDFAHTCSQMLLTDMMGRRLMRKNSGLKVLG  
ILLPPSILSLEFNKDDMPYMTQAQEIHLQEKEPEEPEKPTKEKDEEMELTAMLRNSGESSRKKDEEE  
VQSRHRLIPVGRKIYEFYNAPIVKFWFYTLAYIGYMLFNYIVLVKMERWPSTQEWIVISYIFTLGIEKM  
REILMSEPGKLLQKVKVWLQYWNVTDLIAILLFVGMILRLQDQPFSDGRVIYCVNIIYWIYRLLDIF  
GVNKYLGPIVMMIGKMMIDMMYFVIIMLVMSFGVARQAIFPNEPSWKLAKNIFYMPYMMIYGEVFA  
DQIDPPCQNETREDGKTIQLPPCKTGAWIVPAIMACYLLVANILLVNLIAVFNNTFFEVKSISNQVWK  
FQRYQLIMTFHERPVLPPPLIIFSHMTMIFQHVCCRWRKHESDQDERDYGLKLFITDDELKKVHDFEEQC  
IEEYFREKDRFNSSNDERIRVTSERVENMSMRLEEVNEREHSMAKSLQTVDIRLAQLEDLIGRMATALE  
RLTGLERAESNKIRSRTSSDCTDAAYIVRQSSFNSEQENFKLQESIDPAGEETISPTSPMLPRMRS  
FYSVNVKDKGGIEKLESIFKERSLSLHRATSSHVAKEPKAPAANTLAIVPDSRRPSSCIDIYVSAMD  
ELHCDIEPLDNSMNILGLGEPFSALAPSTTPSSAYATLAPTRPPSRSIDFEDLTSMDTRFSDDYTH  
LPECQNPWTDPTTYHTIERSKSSRYLATTPFLLEEAPIVKSHSFMFSPRSYYANFGVPVKTAEYTSIT  
DCIDTRCVNAPQAIADRATFPGGLGDKVEDLSCCHPERAEELSHPSSEENEARQRAANPISSQEAEN  
ADRTLNNITVPKIERANSYSAEENPVYAHTKSFISDKLDRQRNTASLRNPFQRSKSSKPEGRGDSL  
SMRRLSRTSAFHSFESKH

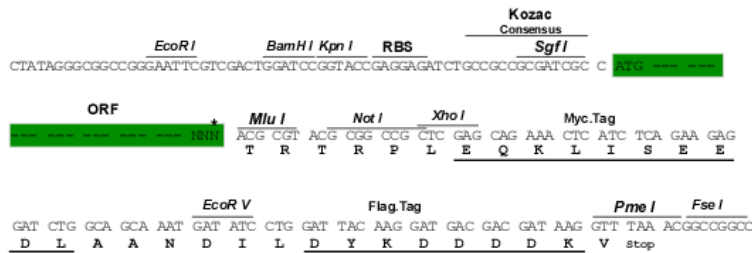
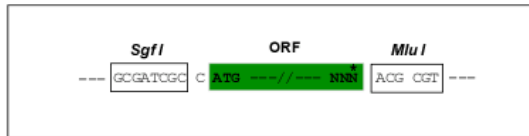
TRTRPLEQKLISEEDLAANDILDYKDDDDKV

Restriction Sites:

SgfI-MluI

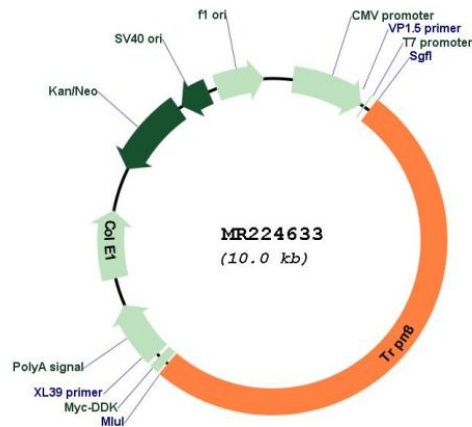
Cloning Scheme:

Cloning sites used for ORF Shuttling:



\* The last codon before the Stop codon of the ORF

Plasmid Map:



ACCN: NM\_001035243

ORF Size: 5097 bp

OTI Disclaimer: The molecular sequence of this clone aligns with the gene accession number as a point of reference only. However, individual transcript sequences of the same gene can differ through naturally occurring variations (e.g. polymorphisms), each with its own valid existence. This clone is substantially in agreement with the reference, but a complete review of all prevailing variants is recommended prior to use. [More info](#)

OTI Annotation: This clone was engineered to express the complete ORF with an expression tag. Expression varies depending on the nature of the gene.

<b>Components:</b>	The ORF clone is ion-exchange column purified and shipped in a 2D barcoded Matrix tube containing 10ug of transfection-ready, dried plasmid DNA (reconstitute with 100 ul of water).
<b>Reconstitution Method:</b>	<ol style="list-style-type: none"><li>1. Centrifuge at 5,000xg for 5min.</li><li>2. Carefully open the tube and add 100ul of sterile water to dissolve the DNA.</li><li>3. Close the tube and incubate for 10 minutes at room temperature.</li><li>4. Briefly vortex the tube and then do a quick spin (less than 5000xg) to concentrate the liquid at the bottom.</li><li>5. Store the suspended plasmid at -20°C. The DNA is stable for at least one year from date of shipping when stored at -20°C.</li></ol>
<b>RefSeq:</b>	<u>NM_001035243.3</u>
<b>RefSeq Size:</b>	6676 bp
<b>RefSeq ORF:</b>	5100 bp
<b>Locus ID:</b>	226025
<b>Cytogenetics:</b>	19 B
<b>MW:</b>	194.2 kDa