

Product datasheet for **MR224618**

Nectin3 (NM_021496) Mouse Tagged ORF Clone

Product data:

Product Type:	Expression Plasmids
Product Name:	Nectin3 (NM_021496) Mouse Tagged ORF Clone
Tag:	Myc-DDK
Symbol:	Nectin3
Synonyms:	2610301B19Rik; 3000002N23Rik; 4921513D19Rik; AA407785; AU016832; AW538082; CD113; Pvr13
Vector:	pCMV6-Entry (PS100001)
E. coli Selection:	Kanamycin (25 ug/mL)
Cell Selection:	Neomycin



[View online »](#)

ORF Nucleotide Sequence:

>MR224618 representing NM_021496
 Red=Cloning site Blue=ORF Green=Tags(s)

TTTTGTAATACGACTCACTATAGGGCGGCCGGGAATTCGTCGACTGGATCCGGTACCGAGGAGATCTGCC
 GCC**CGGATCGCC**

ATGGCGCGGACCCGGGCGGCCCGTTGTGCTCGGAGCGGCAAAGCACAACTTTCCTCGGCGTTTC
 CTCCCGCGGCCGACTGCTGCTGCCGGCCCGACGCCCGCGCTGCTGCTGCTTATTCCCGTGT
 TCTCTTCTCCCGCTCTGTGGTGCCTTAGCTGGATCAATTATTGTGGAGCCACATGTCACAGCAGTGTGG
 GAAAGAATGTTTCATTGAAGTGTTAATTGAAGTGAATGAACTATAACCCAGATCTCATGGGAGAAGA
 TACATGGCAAAGTACACAGACTGTTGCAGTTCATCATCCTCAGTATGGATTCTCTGTTCAAGGAGATTA
 TCAGGGAAGAGTCTTGTAAAACTATCACTTAATGATGCAACAATTACTCTGCATAACATAGGCTTC
 TCAGATTCTGGAAATATATATGCAAAGCCGTTACATCCCACTTGAAATGCTCAGTCTCTACAACAG
 TGAAGTGTAGTTGAACCCACAGTGAAGCTGATAAAAGGGCCGATTCTTTAATTGATGGAGGGAATGA
 GACAGTAGCAGCCGTTTGTGTAGCAGCCACTGGAAAGCCAGTCGCACAGATTGACTGGGAAGGTGATCTT
 GGTGAAATGGAATCTAGTACAACCTCTTTTCTAATGAAACAGCAACGATTGTCAGCCAATACAAGCTGT
 TTCCACAAAGATTTGCTCGAGGAAGGCGAATTACTTGTGTGTAACATCCAGCCTTAGAAAAGGACAT
 TCGCTACTCTTTCATACTAGACATACAGTATGCTCCTGAAGTTTCAGTAACAGGATATGATGGAAATGG
 TTCGTGGGAAGAAAAGGTGTTAACCTCAAGTGAATGCTGATGCAAACCTCCACCCTTCAAGTCCGCTGT
 GGAGCAGGTTGGATGGACAATGGCCTGATGGTTTATTGGCGTCAGATAATACTCTTCATTTTGTCCATCC
 ATTGACTGTCAATTATCTGGCGTTTATGTCTGTAAGATCAAAATCCCTTGGTCAAAGAAGTGAATCAA
 AAGTTATCTACATTTACAGACATCCCGCTTACGCAGACCTCATCCATAGCAGTGGCTGGAGCCGTGATTG
 GAGCTGTCTGGCCCTTTCATCATCACCGTCTTTGTGACTGTGTTGCTGACCCCTCGGAAAAAGAGACC
 GTCCTATCTTGACAAAGTAATCGACCTTCCACCTACACATAAGCCACCCCTGTATATGAAGAACGAATT
 CCTTCTCTCCCTCAGAAAGACCTTCTTGGCCAGACTGAACAATTGCCTTTGCAGACTCAGTTCAAGGAGA
 AAGGAGCTGGTGGTCTTCAGCCCTCTAATGGACCAATTAGCAGGAGATTTGACTATGAGGATGAGAGCAC
 AATGCAAGAAGATGGAACCTCAGCGCATGTGCCCTTTATAGCCAGATGTGCCACCAAGACCGAAGCCCT
 CGCCAACATCACCCACGCAACCCCGAGAGACTCTACATCAACCCACGAGAACATTATGTG

ACGCGTACGCGGCCGCTCGAGCAGAACTCATCTCAGAAGAGGATCTGGCAGCAAATGATATCTGGATT
 ACAAGGATGACGACGATAAGGTTTAA

Protein Sequence:

>MR224618 representing NM_021496
 Red=Cloning site Green=Tags(s)

MARTPGPAPLCPGGGKAQLSSAFPPAAGLLLLPAPTPPPLLLLLIPLLLLSRLCGALAGSIIVEPHVTAVW
 GKNVSLKCLIEVNETITQISWEKIHGKSTQTVAVHHPQYGFVSVQGDYQGRVLFKNYSLNDATITLHNIGF
 SDSGKYICKAVTFPLGNAQSSTTVTLVEPTVSLIKGPDSLIDGNETVAAVCVAATGKPAQIDWEGDL
 GEMESSTSFNPNETATIVSQYKLFPTRFARGRRITCVVKHPALEKDIRYSFILDIQYAPEVSVTGYDGNW
 FVGRKGVNLKCNADANPPPFKSVWSRLDGQWPDGLLASDNTLHFVHPLTVNYSVYVCKVNSLQGRSDQ
 KVIYISDIPLTQTSSIAVAGAVIGAVLALFIIITVFVTVLLTPRKRPSYLDKVIDLPPTHKPPPVYEERI
 PSLPQKDLLGQTEHLPLQTQFKEKGAGGLQPSNGPISRRFDYEDESTMQEDGTQRMCPLYSQMCHQDRSP
 RQHHPNPERLYINPREHYV

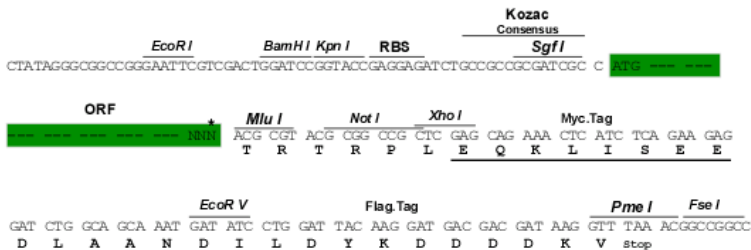
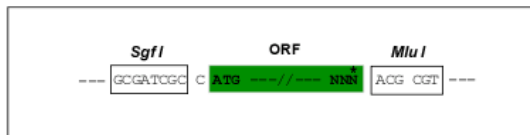
TRTRPLEQKLISEEDLAANDILDYKDDDDKV

Restriction Sites:

Sgfl-MluI

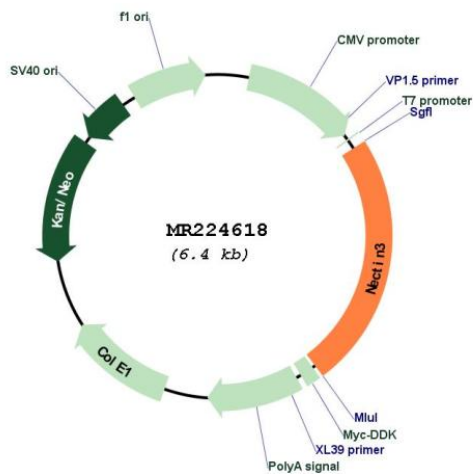
Cloning Scheme:

Cloning sites used for ORF Shuttling:



* The last codon before the Stop codon of the ORF

Plasmid Map:



ACCN:	NM_021496
ORF Size:	1530 bp
OTI Disclaimer:	The molecular sequence of this clone aligns with the gene accession number as a point of reference only. However, individual transcript sequences of the same gene can differ through naturally occurring variations (e.g. polymorphisms), each with its own valid existence. This clone is substantially in agreement with the reference, but a complete review of all prevailing variants is recommended prior to use. More info
OTI Annotation:	This clone was engineered to express the complete ORF with an expression tag. Expression varies depending on the nature of the gene.
Components:	The ORF clone is ion-exchange column purified and shipped in a 2D barcoded Matrix tube containing 10ug of transfection-ready, dried plasmid DNA (reconstitute with 100 ul of water).
Reconstitution Method:	<ol style="list-style-type: none">1. Centrifuge at 5,000xg for 5min.2. Carefully open the tube and add 100ul of sterile water to dissolve the DNA.3. Close the tube and incubate for 10 minutes at room temperature.4. Briefly vortex the tube and then do a quick spin (less than 5000xg) to concentrate the liquid at the bottom.5. Store the suspended plasmid at -20°C. The DNA is stable for at least one year from date of shipping when stored at -20°C.
RefSeq:	NM_021496.3 , NP_067471.1
RefSeq Size:	1817 bp
RefSeq ORF:	1533 bp
Locus ID:	58998
UniProt ID:	Q9JLB9
Cytogenetics:	16 B5
MW:	56.3 kDa
Gene Summary:	Plays a role in cell-cell adhesion through heterophilic trans-interactions with nectins-like or other nectins, such as trans-interaction with NECTIN2 at Sertoli-spermatid junctions. Trans-interaction with PVR induces activation of CDC42 and RAC small G proteins through common signaling molecules such as SRC and RAP1. Also involved in the formation of cell-cell junctions, including adherens junctions and synapses. Induces endocytosis-mediated down-regulation of PVR from the cell surface, resulting in reduction of cell movement and proliferation. Plays a role in the morphology of the ciliary body.[UniProtKB/Swiss-Prot Function]